



GT

drawn by

DW

checked by

MAY 2023

date

revisions

MOORE PUBLIC SCHOOLS
BOARD OF EDUCATION
MOORE, OKLAHOMA



LOCKER ROOM
ADDITION
MOORE WEST
JUNIOR HIGH SCHOOL

sheet no:

E201

OWNERSHIP USE OF DOCUMENTS:

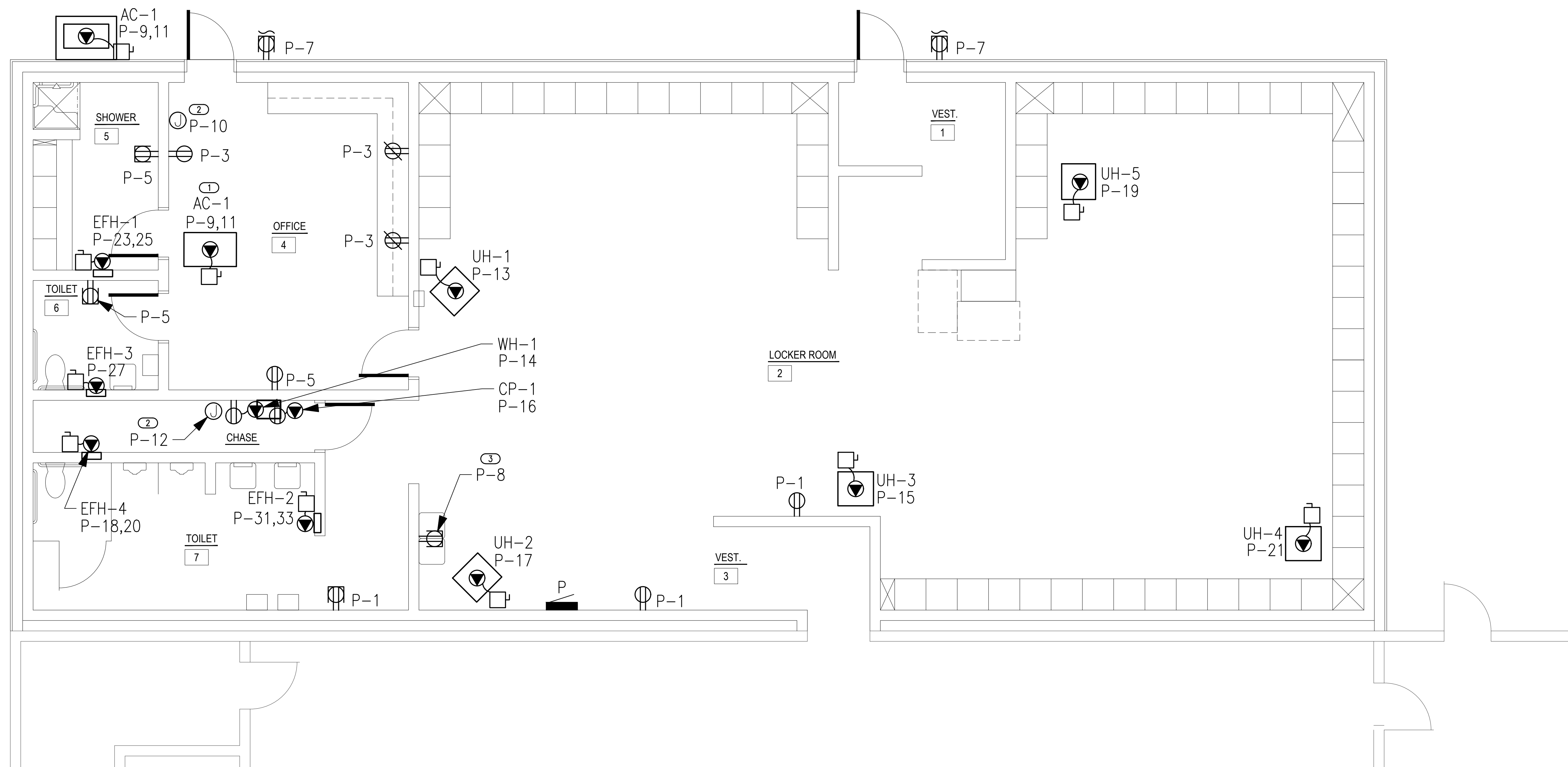
AGP EXPRESSLY RESERVES ITS
COPYRIGHT AND OTHER PROPERTY
RIGHTS OF ALL PLANS AND DRAWINGS
DESIGNED AND/OR PRODUCED. PLANS
AND DRAWINGS ARE NOT TO BE
REPRODUCED IN ANY FORM OR MANNER
WITHOUT THE EXPRESSED WRITTEN
CONSENT OF AGP.

POWER GENERAL NOTES

- COORDINATE EXACT LOCATIONS OF DEVICES SHOWN WITH OTHER EQUIPMENT. COORDINATE EXACT LOCATION OF CEILING MOUNTED DEVICES WITH LIGHTS, HVAC EQUIPMENT, AND OTHER DEVICES.
- COORDINATE WITH MECHANICAL CONTRACTOR AND PROVIDE ALL RELAYS, CONNECTIONS, AND ALL DEVICES NECESSARY TO INTERLOCK EXHAUST FANS, DAMPERS, ETC WITH PROPER CONTROL DEVICES.
- COORDINATE EXACT LOCATION OF MECHANICAL EQUIPMENT WITH MECHANICAL CONTRACTOR.
- COORDINATE EXACT LOCATION OF PLUMBING EQUIPMENT WITH PLUMBING CONTRACTOR.

KEYED NOTES

- INDOOR MINI SPLIT UNIT IS POWERED FROM OUTDOOR UNIT. COORDINATE WITH MC FOR FINAL LOCATION AND REQUIREMENTS PRIOR TO ROUGH-IN.
- PROVIDE 120V TRAP PRIMER CONNECTION. COORDINATE WITH THE PLUMBING CONTRACTOR AND MANUFACTURER FOR THE EXACT LOCATION AND CONNECTION REQUIREMENTS PRIOR TO ROUGH-IN.
- PROVIDE 120V ELECTRIC WATER COOLER CONNECTION. COORDINATE WITH THE ARCHITECT, PLUMBING CONTRACTOR, AND MANUFACTURER FOR THE EXACT LOCATION AND CONNECTION REQUIREMENTS PRIOR TO ROUGH-IN.



1 ELECTRICAL POWER PLAN

SCALE: 1/4" = 1'-0"

