

**LIGHTING GENERAL NOTES**

1. COORDINATE EXACT LOCATIONS AND MOUNTING HEIGHTS OF LIGHT FIXTURES WITH HVAC EQUIPMENT AND OTHER DEVICES/EQUIPMENT.
2. OCCUPANCY SENSOR LOCATIONS SHOWN ARE FOR DESIGN INTENT ONLY. LOCATE OCCUPANCY SENSORS PER MANUFACTURER'S WRITTEN INSTALLATION INSTRUCTIONS.
3. COORDINATE LIGHT SWITCHES WITH THERMOSTATS AND OTHER WALL MOUNTED DEVICES.
4. COORDINATE EXTERIOR FIXTURE MOUNTING HEIGHT WITH ARCHITECT AND OWNER PRIOR TO ROUGH IN.

**KEYED NOTES**

- ① TYPE S2 FIXTURES EMERGENCY ARE CONNECTED TO A SINGLE 250W LOAD SHEDDING INVERTER. COORDINATE WITH MANUFACTURER/EC AND ARCHITECT FOR MORE DETAILS PRIOR TO BEGIN WORK.

**AGP**

the Abla Griffin Partnership L.L.C.

201 N. BROADWAY  
SUITE 210  
MOORE, OK. 73160  
405.735.3477  
AGP@theAGP.net  
www.theAGP.net

WDB ENGINEERING  
CIVIL

SALAS O'BRIEN  
MECHANICAL/ELECTRICAL



GT

drawn by

DW

checked by

MAY 2023

date

revisions

MOORE PUBLIC SCHOOLS  
BOARD OF EDUCATION  
MOORE, OKLAHOMA



LOCKER ROOM  
ADDITION  
MOORE WEST  
JUNIOR HIGH SCHOOL

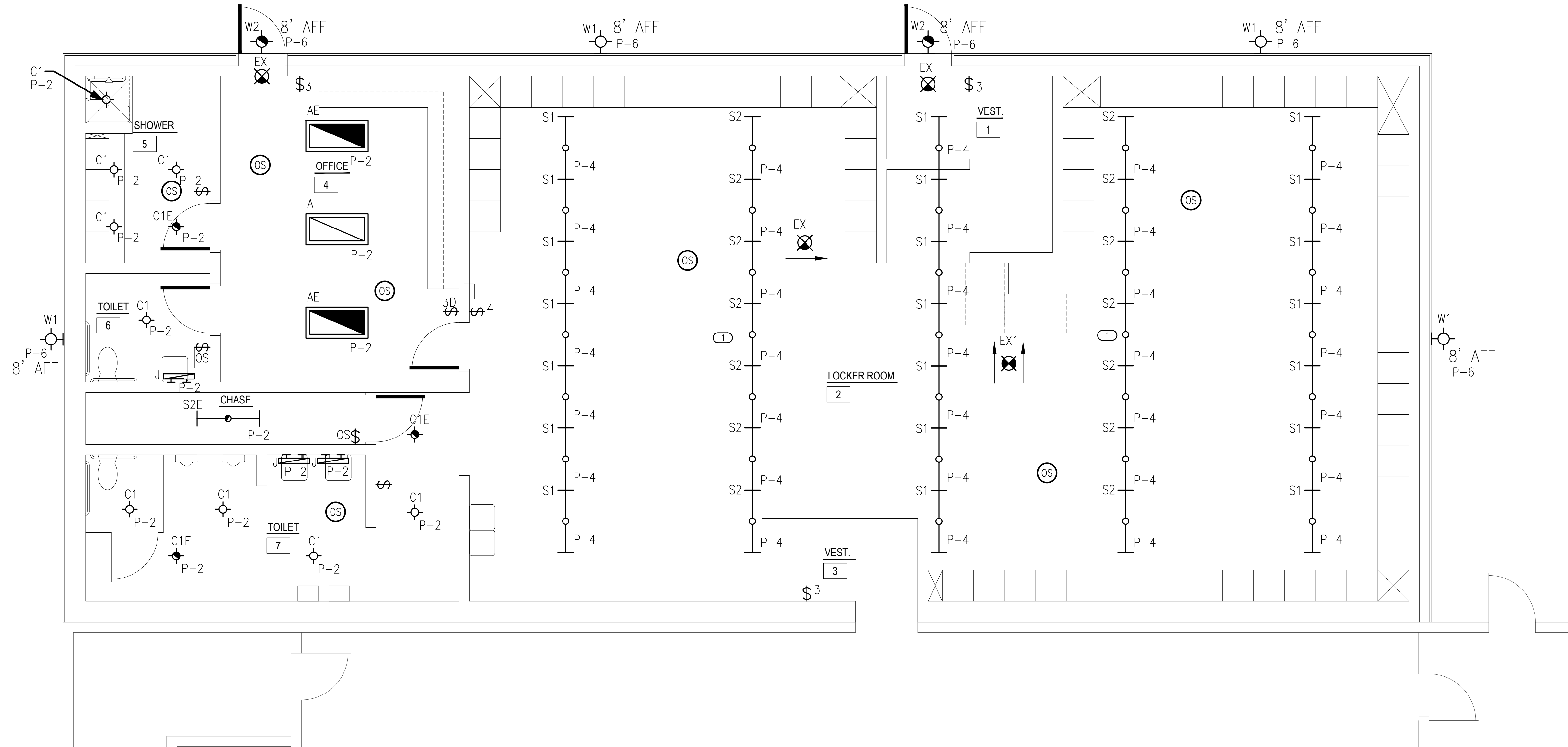
sheet no:

**E101**

OWNERSHIP USE OF DOCUMENTS:

AGP EXPRESSLY RESERVES ITS COPYRIGHT AND OTHER PROPERTY RIGHTS OF ALL PLANS AND DRAWINGS DESIGNED AND/OR PRODUCED. PLANS AND DRAWINGS ARE NOT TO BE REPRODUCED IN ANY FORM OR MANNER WITHOUT THE EXPRESSED WRITTEN CONSENT OF AGP.

**Salas O'Brien**  
2800 Van Buren St., Suite 2835  
Norman, OK 73072  
Salas O'Brien Registration: CA# 7058  
Expiration Date: 6/30/2025  
Salas O'Brien Project Number: 2023-04636-00



**1 ELECTRICAL LIGHTING PLAN**

SCALE: 1/4" = 1'-0"

