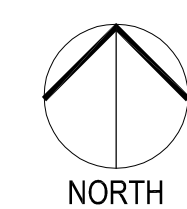
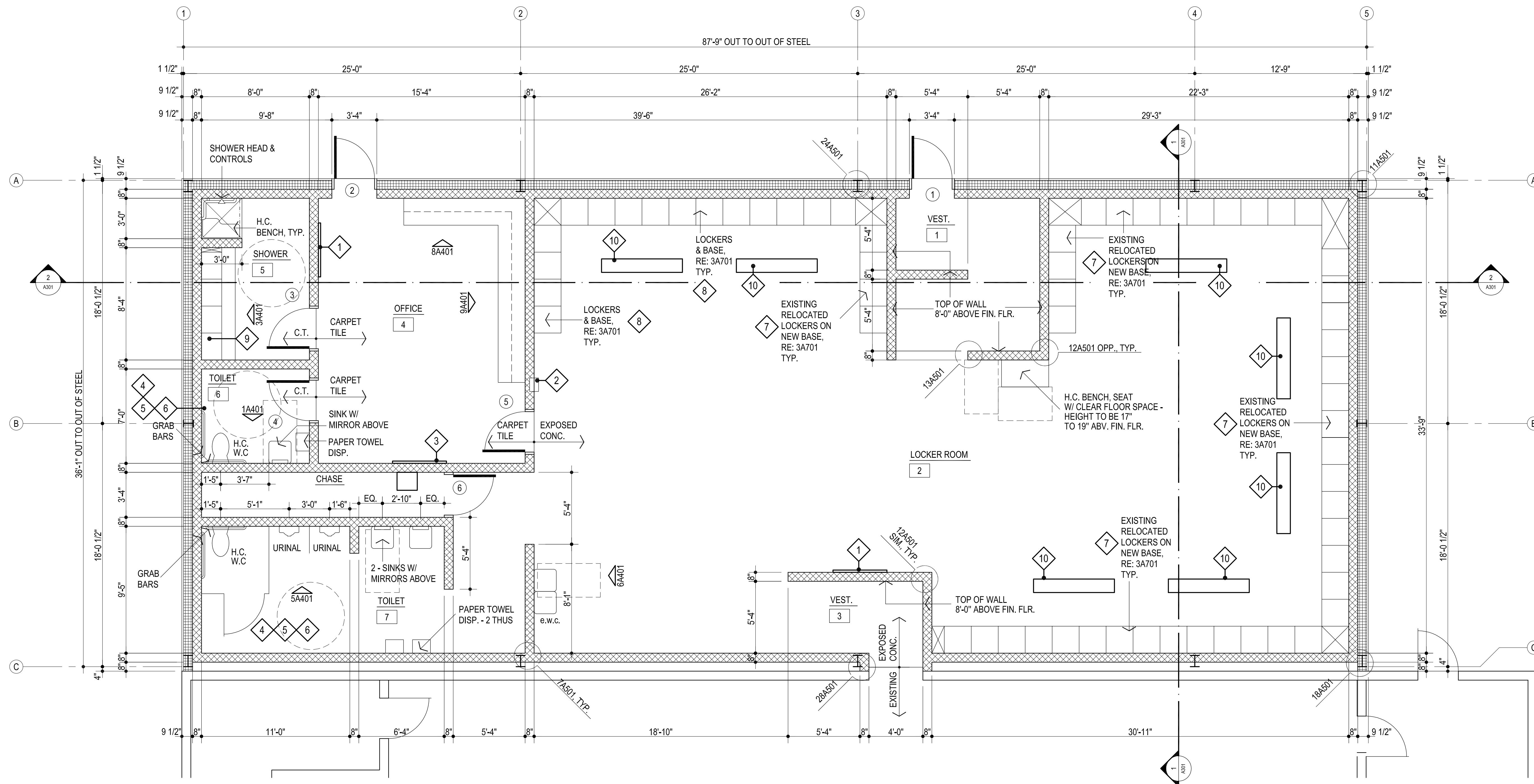


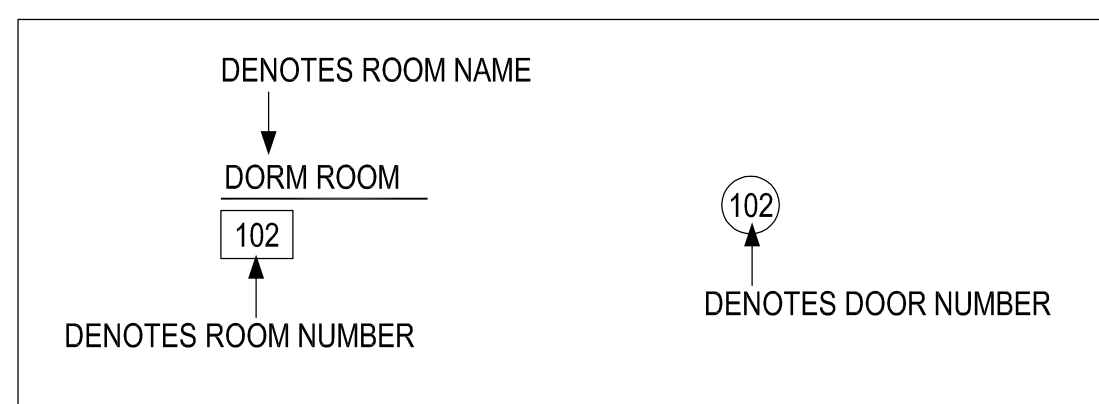


CG	
drawn by	
MA	
checked by	
MAY 2023	
date	
revisions	



**1** FLOOR PLAN  
1/4" = 1'-0" 3,197 s.f.

NOTE: CONTRACTOR TO VERIFY THAT THE MOUNTING HEIGHTS OF ALL WALL MOUNTED FIXTURES (I.E. PLUMBING FIXTURES, GRAB BARS, MIRRORS, ETC.) MEET ALL APPLICABLE CODES & STANDARDS PRIOR TO INSTALLATION.



MISCELLANEOUS NOTES:

- F.E.C. - FIRE EXTINGUISHER AND CABINET

ITEM NO.	CFI	OF / CI	DESCRIPTION	MANUFACTURER		REMARKS
				NAME	MODEL NO.	
1	●		MARKERBOARD - 4'-0"	BEST-RITE CHALKBOARD CO.	RE: SPECS	W/ CHALK RAIL
2	●		FIRE EXTINGUISHER & CABINET	JL INDUSTRIES	RE: SPECS	
3	●		TACKBOARD - 4'-0"	BEST-RITE CHALKBOARD CO.	RE: SPECS	
4	●		TOILET PAPER HOLDER		RE: SPECS	
5	●		PAPER TOWEL DISPENSER		---	
6	●		SOAP DISPENSER		---	
7	●		EXISTING LOCKERS		---	45 EXISTING LOCKERS TO BE RELOCATED
8	●		LOCKERS - DOUBLE TIER	REPUBLIC LOCKERS	RE: SPECS	15 NEW LOCKERS
9	●		LOCKERS - COACHES	REPUBLIC LOCKERS	RE: SPECS	4 NEW LOCKERS
10	●		MOVEABLE BENCH	REPUBLIC LOCKERS	RE: SPECS	

**2** EQUIPMENT SCHEDULE

NOTE:

ALL CHALKBOARDS & TACKBOARDS MOUNTED @ EXTERIOR WALLS SHALL HAVE "STAND-OFF" MOUNTING BRACKETS TO PREVENT CONDENSATION BEHIND BOARDS.

LEGEND:

- CONTRACTOR FURNISHED AND INSTALLED (CFI)
- OWNER FURNISHED AND CONTRACTOR INSTALLED (OF / CI)