



CG
drawn by
MA
checked by
MAY 2023
date
revisions

MOORE PUBLIC SCHOOLS
BOARD OF EDUCATION
MOORE, OKLAHOMA



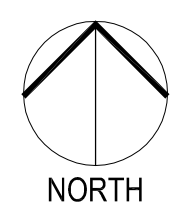
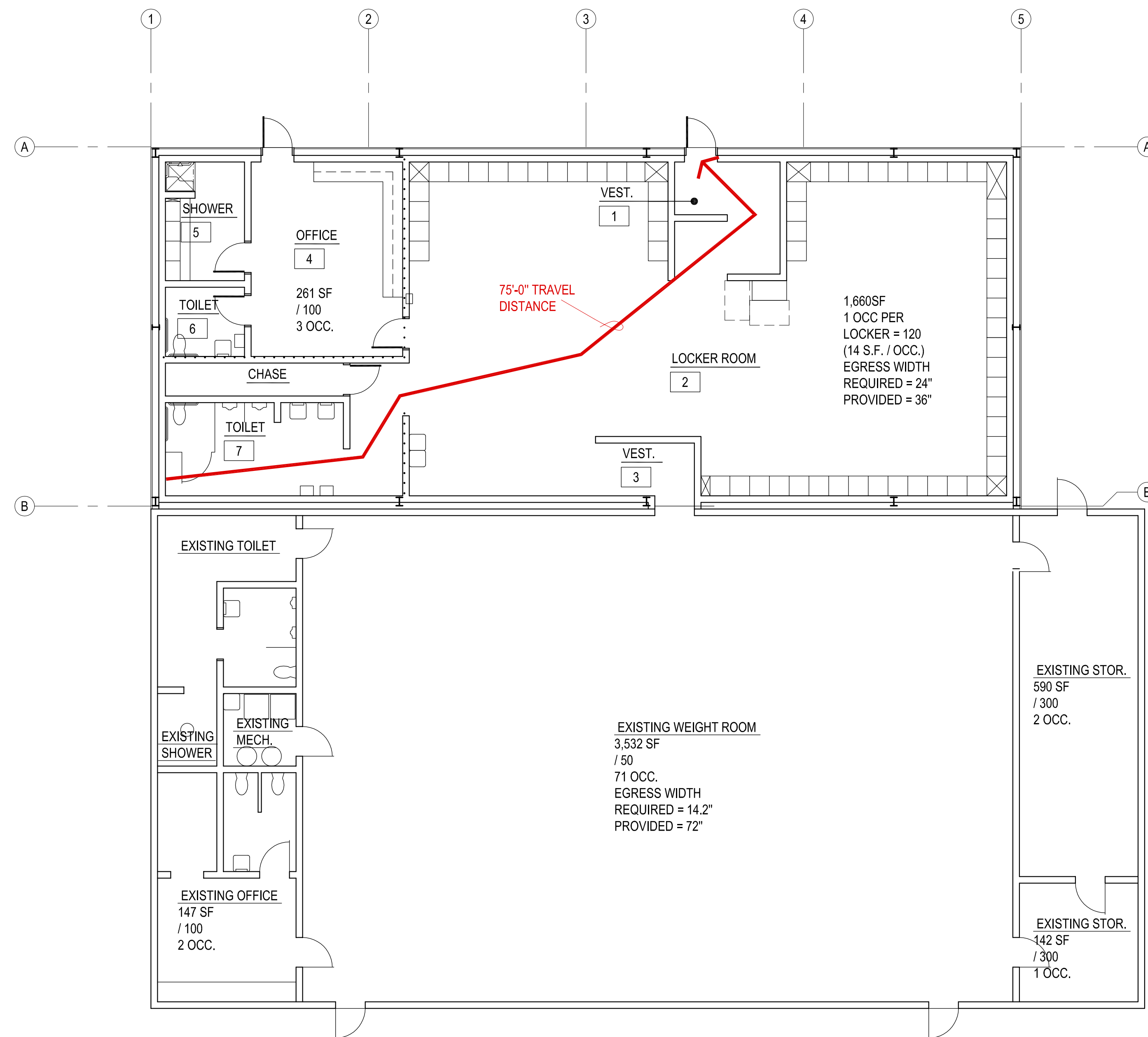
LOCKER ROOM
ADDITION
MOORE WEST
JUNIOR HIGH SCHOOL

sheet no:

A101

FIRE CODE FLOOR PLAN

OWNERSHIP USE OF DOCUMENTS:
AGP EXPRESSLY RESERVES ITS
COPYRIGHT AND OTHER PROPERTY
RIGHTS OF ALL PLANS AND DRAWINGS
DESIGNED AND/OR PRODUCED. PLANS
AND DRAWINGS ARE NOT TO BE
REPRODUCED IN ANY FORM OR MANNER
WITHOUT THE EXPRESSED WRITTEN
CONSENT OF AGP.



1 FIRE CODE FLOOR PLAN
1/8" = 1'-0"

CONSTRUCTION DATA (TABLE 503):

OCCUPANCY - E
CONSTRUCTION TYPE - TYPE II - B
BASIC ALLOWABLE AREA - 58,000 S.F. PER FLOOR
ALLOWABLE STORIES - 3
ACTUAL STORIES - 1
ACTUAL HEIGHT - 15'-1"

BUILDING SIZES:
EXISTING BUILDING: (1 STORY) @ 5,075 S.F.
NEW ADDITION: (1 STORY) @ 3,197 S.F.
TOTAL 8,272 S.F.

STRUCTURAL FIRE PROTECTION (TABLE 601):

EXTERIOR BEARING WALLS 0 HOUR
INTERIOR BEARING WALLS NONCOMBUSTIBLE
EXTERIOR NONBEARING WALLS NONCOMBUSTIBLE
COLUMNS 0 HOUR
BEAMS 0 HOUR
PERMANENT PARTITIONS NONCOMBUSTIBLE
FLOOR ASSEMBLIES 0 HOUR
ROOF ASSEMBLIES 0 HOUR
EXTERIOR OPENINGS N/A

PASSIVE FIRE SAFETY SYSTEM:

PORTABLE FIRE EXTINGUISHERS (RE: SHEET A102)
TRAVEL DISTANCE = 200'-0" MAX.
DEADEND - 25'-0" MAX.
ACTUAL DEADEND - NONE

ACTIVE FIRE SAFETY SYSTEMS:

FIRE ALARM SYSTEM
SMOKE DETECTION
AUTOMATIC AIR HANDLING EQUIP. SHUTDOWN
EXIT LIGHTS/EMERGENCY LIGHTS BATTERY

CODES/REGULATIONS USED (CITY OF OKLAHOMA CITY):

2015 IBC - INTERNATIONAL BUILDING CODE
AMERICAN WITH DISABILITIES ACT ACCESSIBILITY GUIDELINES
2017 NATIONAL ELECTRICAL CODE
2017 INTERNATIONAL PLUMBING CODE
2015 INTERNATIONAL MECHANICAL CODE
2015 INTERNATIONAL FIRE CODE
2009 ENERGY CONSERVATION CODE
ASSOCIATED SUPPLEMENTS TO EACH CODE

OCCUPANT LOAD (TABLE 1004.1.1):

EXISTING BUILDING = 75 OCCUPANTS
NEW ADDITON - 123 OCCUPANTS
TOTAL OCCUPANTS = 198 OCC.

EXISTING EGRESS WIDTH:

EXISTING BUILDING & ADDITION REQUIRED 40"
EXISTING BUILDING & ADDITION: PROVIDED 180"

PLUMBING FIXTURES (TABLE 2902.1):

EXISTING TOTAL OCCUPANT LOAD
(EDUCATION) = 75
NEW ADDITION = 123
TOTAL OCCUPANTS = 198 OCC.

TOTAL REQUIRED:	TOTAL PROVIDED :
WATER CLOSETS / URINALS = 4	WATER CLOSETS + URINALS = 9
LAVATORIES = 4	LAVATORIES = 5
DRINKING FOUNTAIN = 2	DRINKING FOUNTAINS = 2
SERVICE SINKS = 1	EXISTING SERVICE SINKS = 1

..... DENOTES 1 HR. RATED PARTITIONS CLOSE-OUT TO BOTTOM OF DECKING - CLOSE-OUT PARTITIONS TO BE CONSTRUCTED OF CMU & 1 LAYER OF 5/8" FIRE RATED ON 6" METAL STUDS @ 16" O.C. STAGGER ALL JOINTS & PROVIDE FIRE TAPE. SEAL ALL PENETRATIONS W/ CONTINUOUS FIRE STOPPING INSULATION &/OR SEALANT.

NOTE:
THIS PLAN INDICATES WALL TO CLOSE OUT TO STRUCTURE DUE TO FIRE CODE REQUIREMENTS. FOR THE NEW ADDITION ONLY. IT IS NOT A REPRESENTATION OF ALL WALLS REQ'D TO CLOSE OUT THROUGHOUT EXISTING BUILDING