



CS  
drawn by \_\_\_\_\_  
MA  
checked by \_\_\_\_\_  
MARCH 2022  
date  
revisions \_\_\_\_\_

MOORE PUBLIC SCHOOLS  
BOARD OF EDUCATION  
MOORE, OKLAHOMA

**MOORE** Public Schools  
LEARNING FOR LIFE

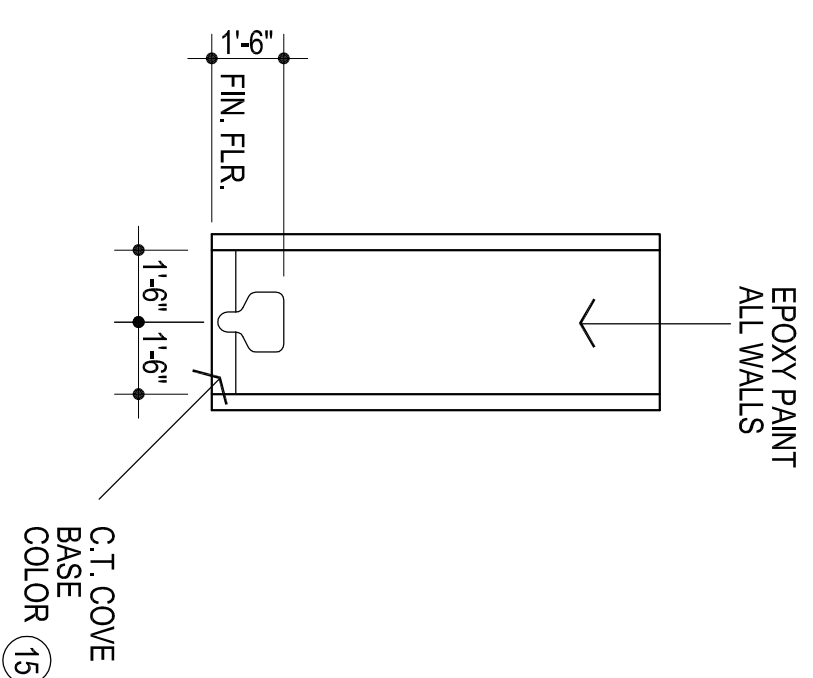
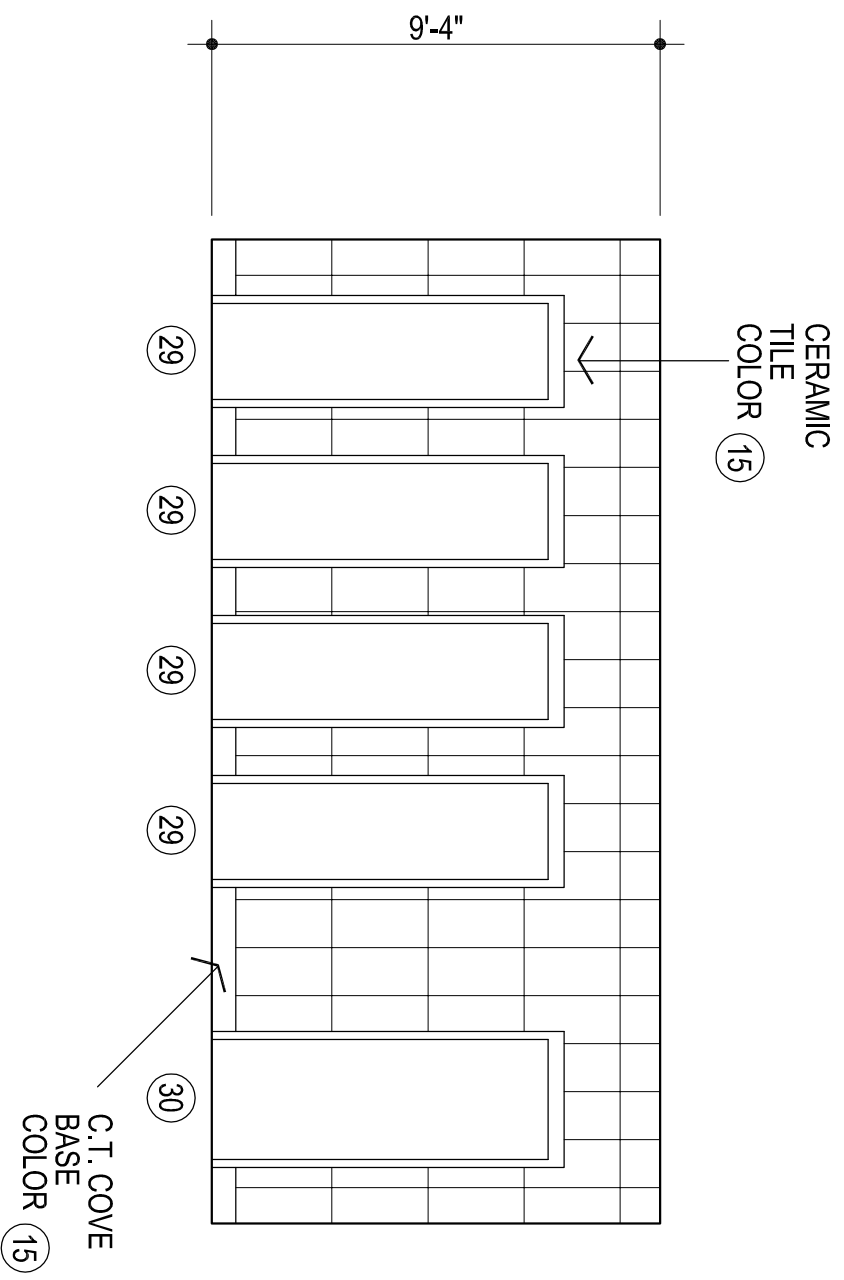
CLASSROOM ADDITION  
MOORE WEST  
JUNIOR HIGH SCHOOL

Sheet No.

**A104**

OWNERSHIP USE OF DOCUMENTS:

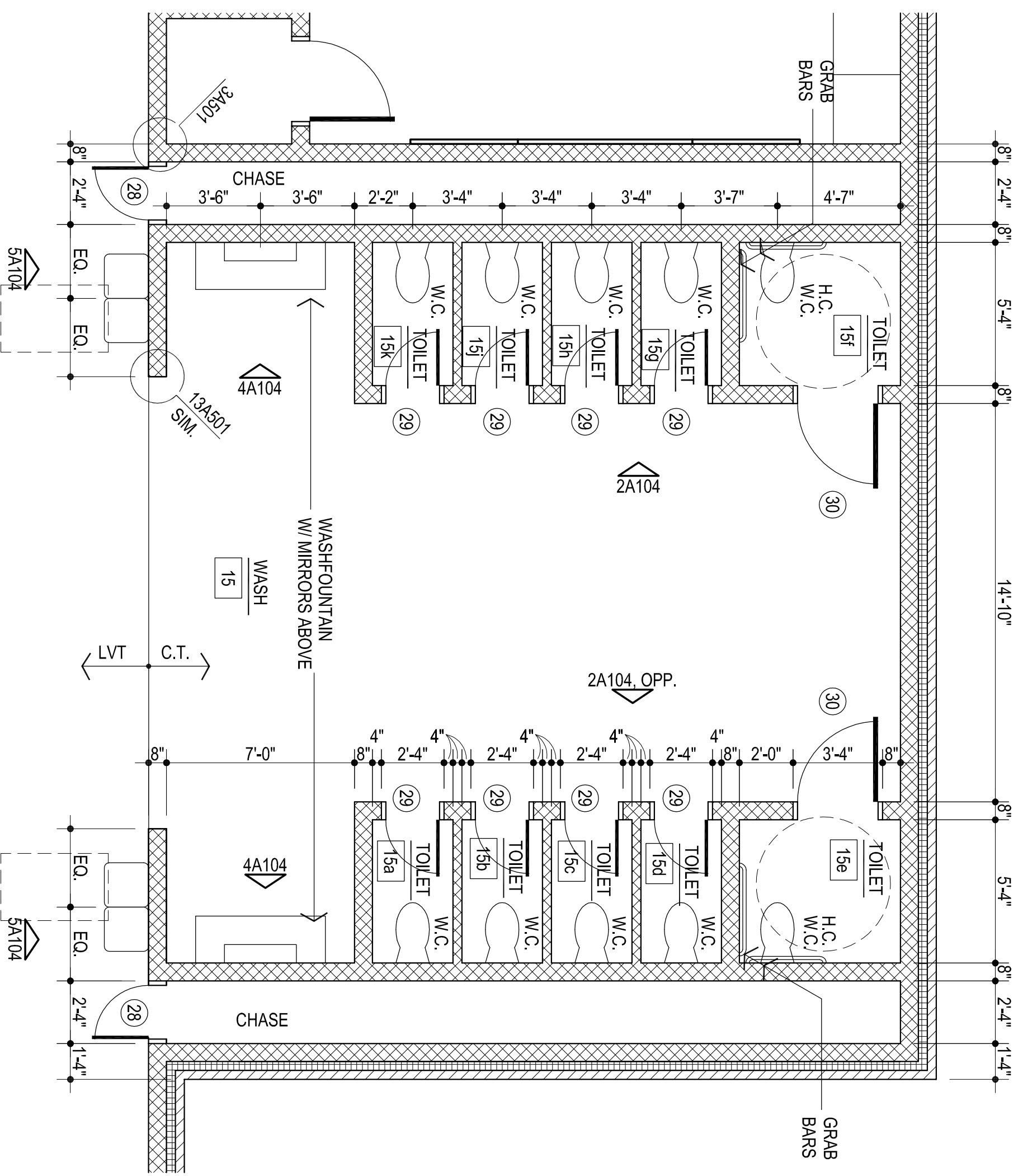
AGP EXPRESSLY RESERVES ITS  
COPYRIGHT AND OTHER PROPERTY  
RIGHTS OF ALL PLANS AND DRAWINGS  
DESIGNED AND/OR PRODUCED BY  
AGP. ANY REPRODUCTION OF THESE  
DRAWINGS IN ANY FORM OR MANNER  
WITHOUT THE EXPRESSED WRITTEN  
CONSENT OF AGP.



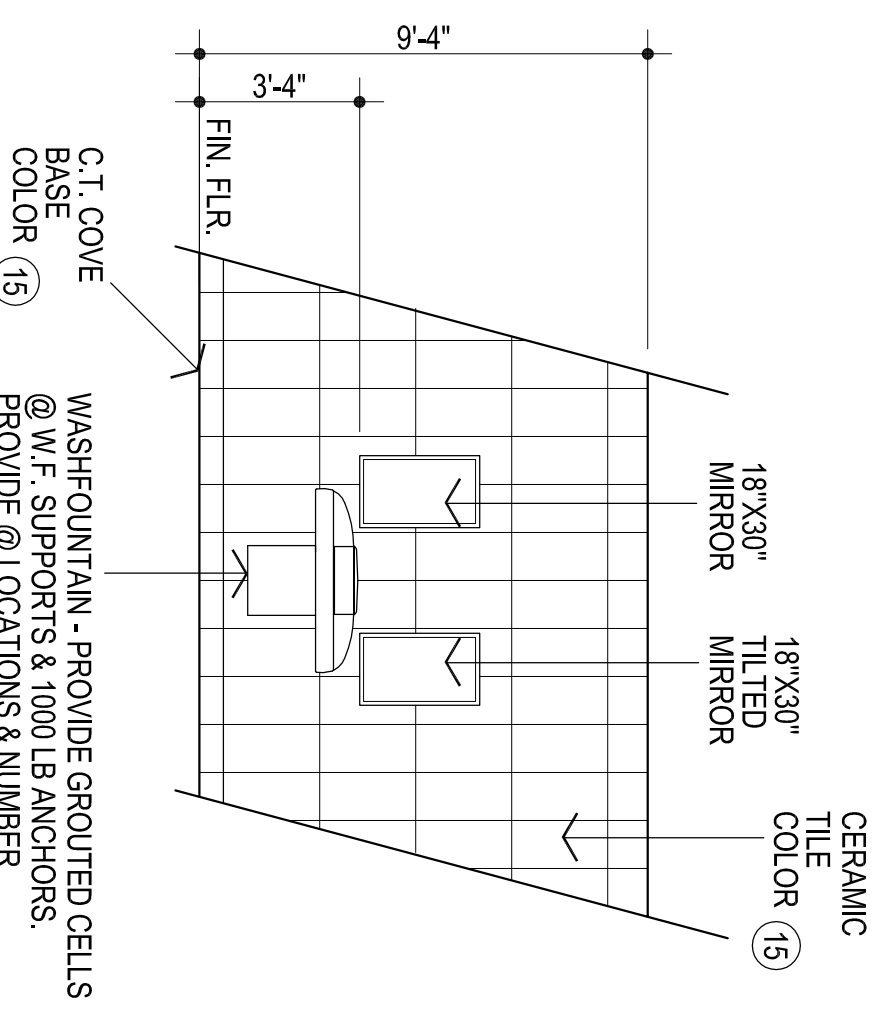
**2**  
W. WALL, E. WALL OPP - RM. #15  
1/4" = 1'-0"

**3**  
TYP. TOILET  
1/4" = 1'-0"

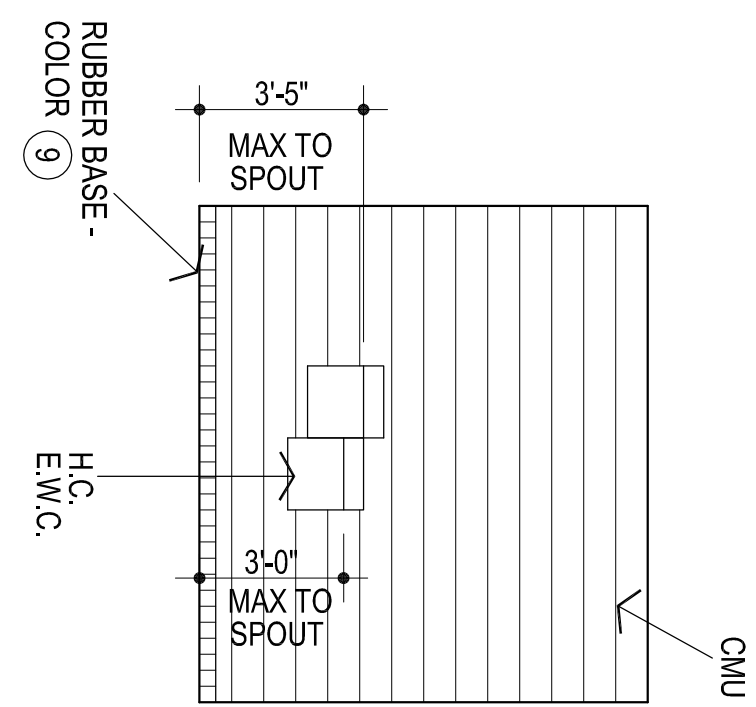
NOTE: CONTRACTOR TO VERIFY THAT  
THE MOUNTING HEIGHTS OF ALL WALL  
MOUNTED FIXTURES (IE PLUMBING FIXTURES,  
GRAB BARS, MIRRORS, ETC.) MEET  
ALL APPLICABLE CODES & STANDARDS  
PRIOR TO INSTALLATION.



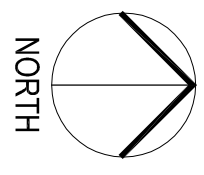
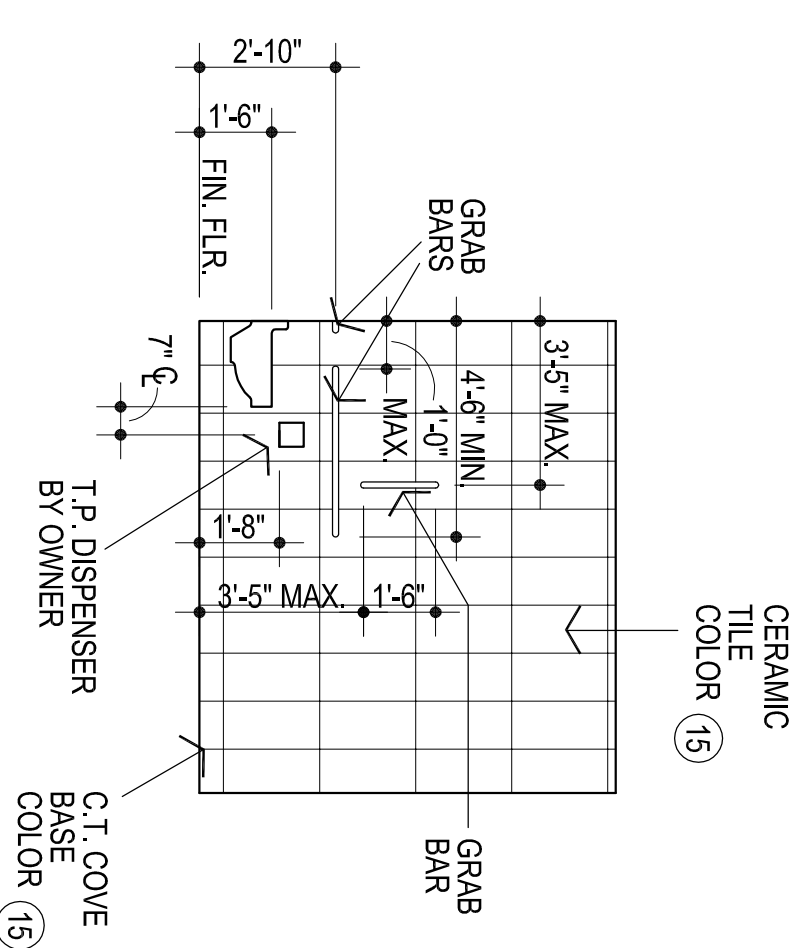
**4**  
TYPICAL WASHFOUNTAIN RM # 15  
1/4" = 1'-0"



**5**  
TYP. E.W.C. ELEVATION  
1/4" = 1'-0"



**6**  
HANDICAP  
ACCESSIBLE W.C.  
1/4" = 1'-0"



**1**  
ENLARGED FLOOR PLAN  
1/4" = 1'-0"