

**MOORE PUBLIC SCHOOLS -
MOORE WEST JUNIOR HIGH SCHOOL –
STEM CLASSROOM ADDITION**

Moore Public Schools - Moore, Oklahoma
AGP - Moore, Oklahoma

CONSTRUCTION BULLETIN NO. 4

November 14, 2022

1. REVISED RESTROOMS NO. 15 AS PER ATTACHED DRAWINGS.

END OF CONSTRUCTION BULLETIN NO. 4



CG
drawn by
MA
checked by
MARCH 2022
date

revisions
1 ADD. #1, 7-11-22
2 ADD. #2, 7-28-22
3 CB-4

MOORE PUBLIC SCHOOLS
BOARD OF EDUCATION
MOORE, OKLAHOMA



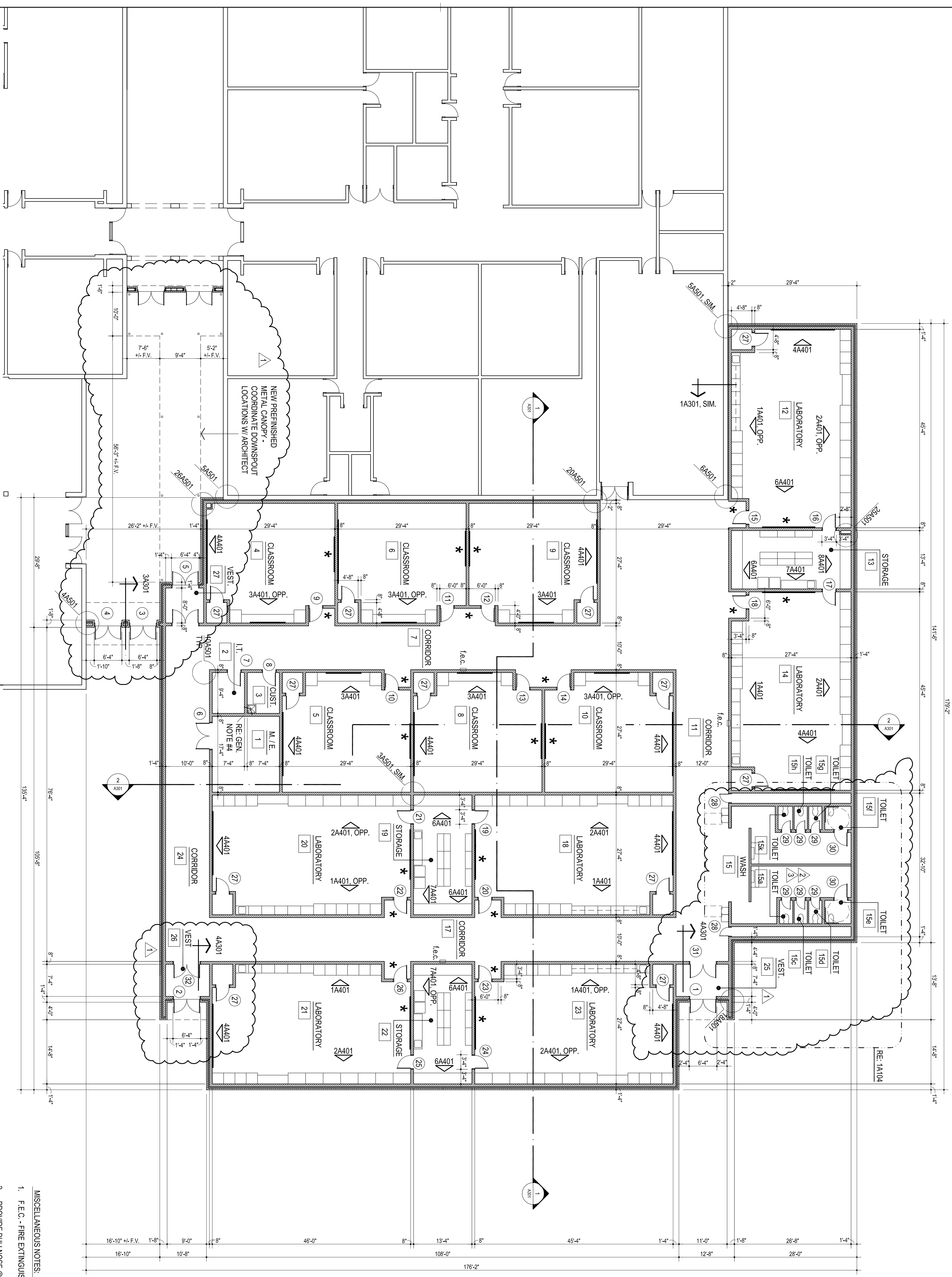
CLASSROOM ADDITION
MOORE WEST
JUNIOR HIGH SCHOOL

Sheet No.

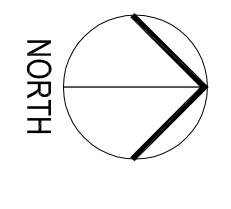
A103

OWNERSHIP USE OF DOCUMENTS:

AGP EXPRESSLY RESERVES ITS
COPYRIGHT AND OTHER PROPERTY
RIGHTS OF ALL PLANS AND DRAWINGS
DESIGNED AND/OR PRODUCED. PLANS
REPRODUCED IN ANY FORM OR MANNER
WITHOUT THE EXPRESSED WRITTEN
CONSENT OF AGP.



FLOOR PLAN
3/27 = 1'-0" 20,865 S.F.

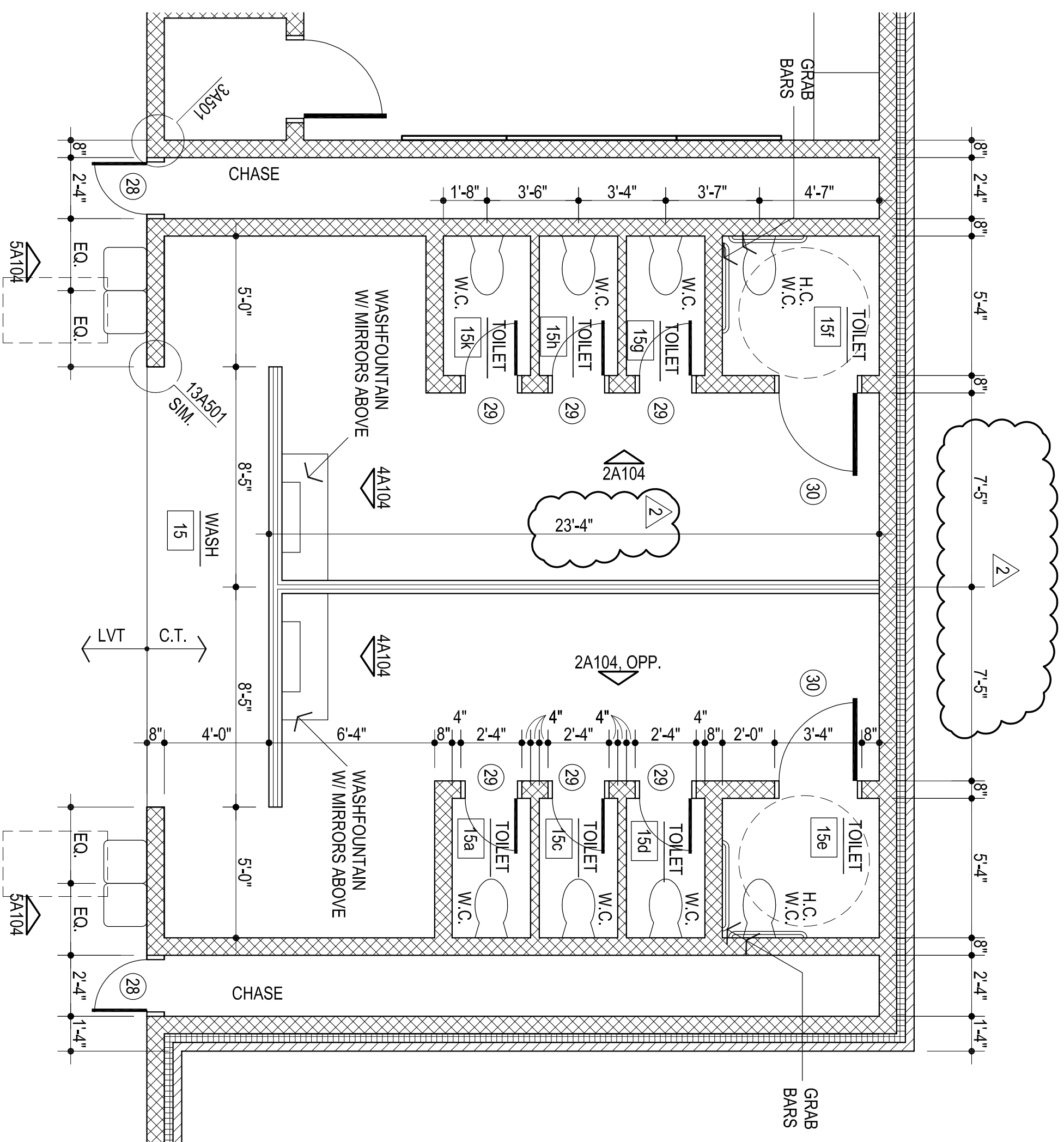


MISCELLANEOUS NOTES:

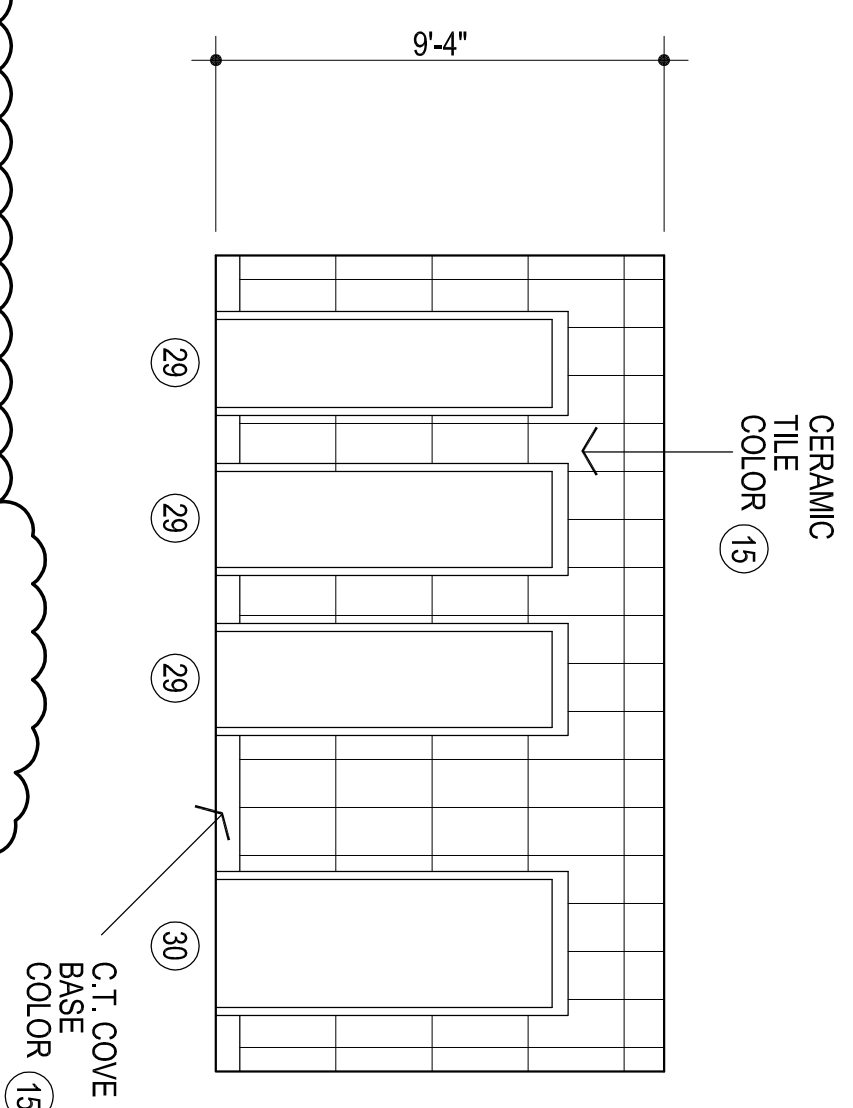
1. F.E.C. - FIRE EXTINGUISHER AND CABINET
2. PROVIDE BULLNOSE @ ALL EXPOSED CMU CORNERS & ENDS (b.n.)
3. * INDICATES ROOM WALLS & RECESS WALLS PAINTED ACCENT COLOR (3)
4. PROVIDE MOP SINK W/ MOP STRIP

EXISTING BUILDING
NO WORK UNLESS
NOTED OTHERWISE

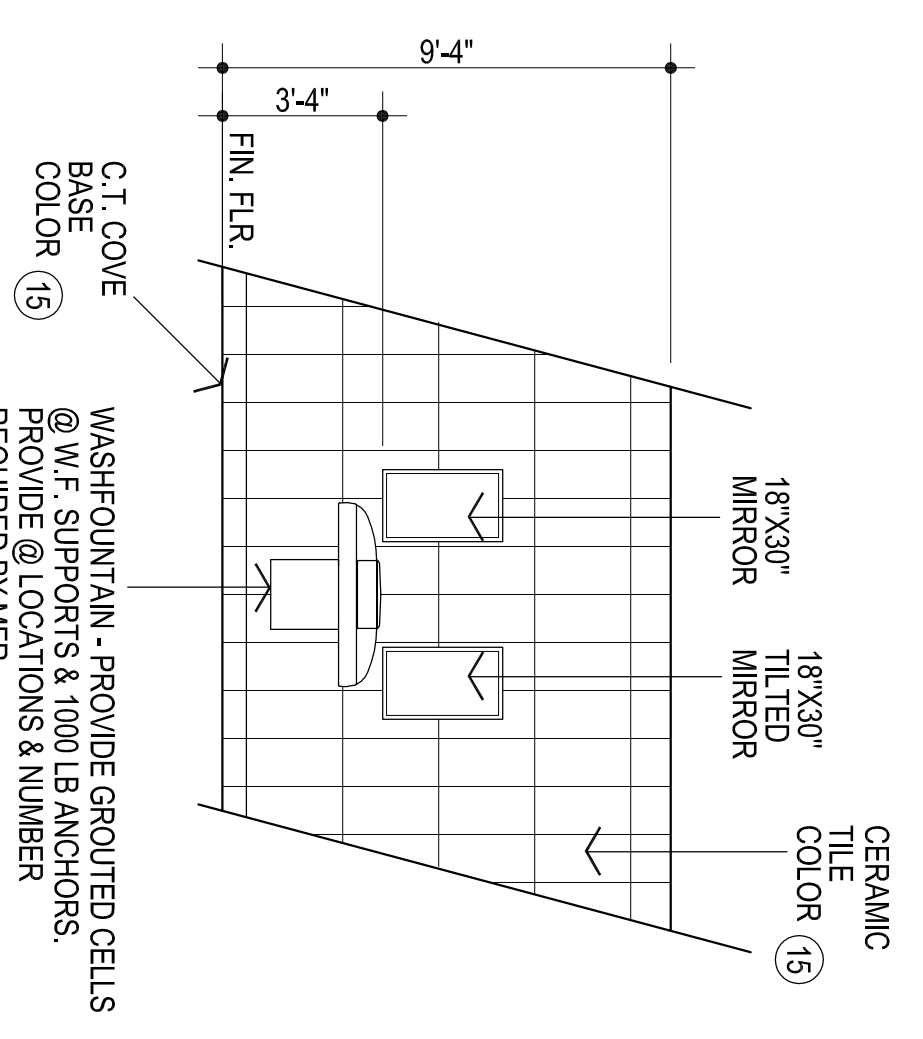
NEW ADDITION



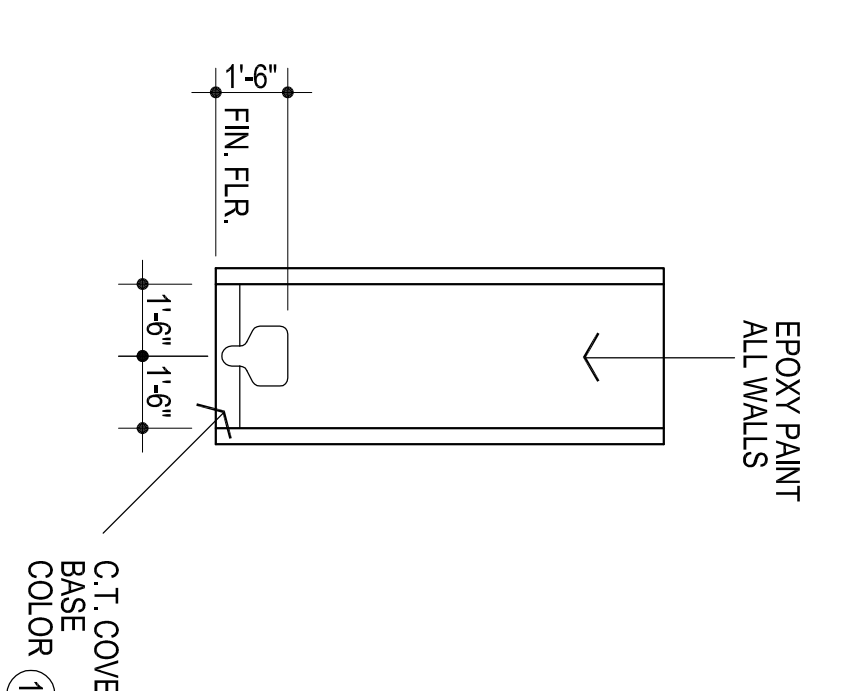
1
ENLARGED FLOOR PLAN
1/4" = 1'-0"



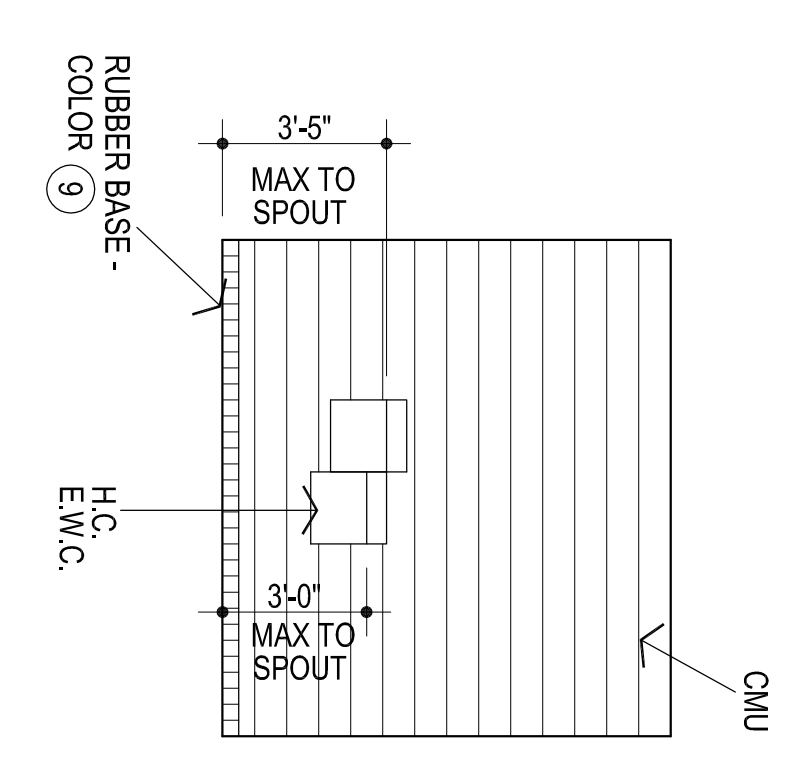
2
W. WALL, E. WALL OPP - RM. #15
1/4" = 1'-0"



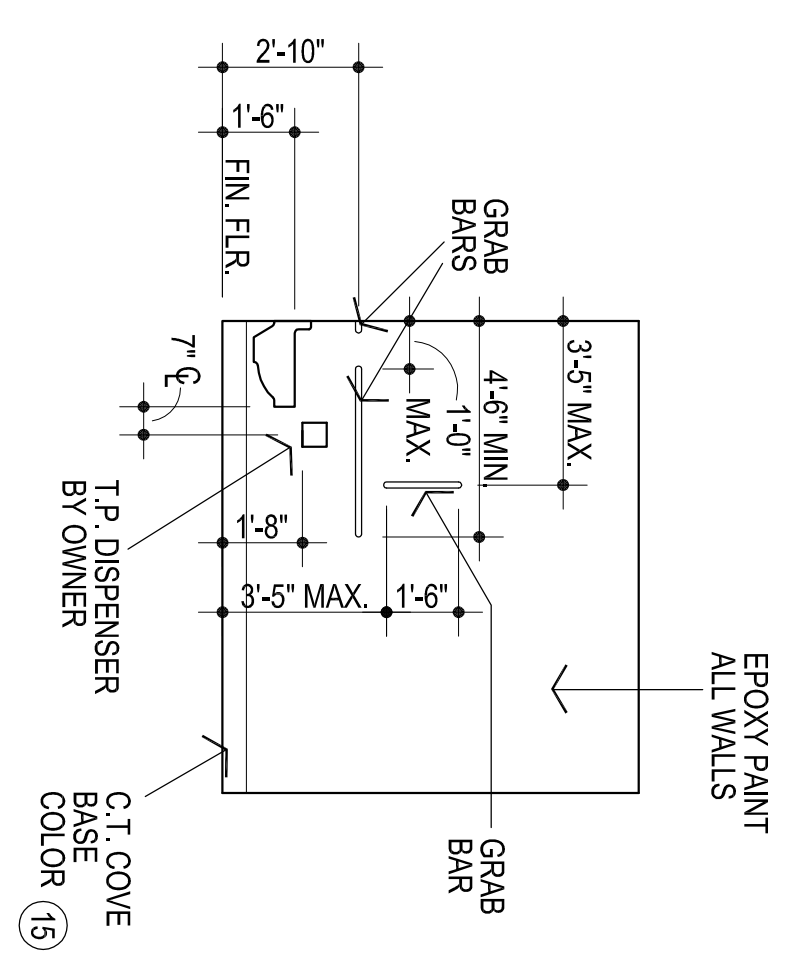
4
TYPICAL WASHFOUNTAIN RM # 15
1/4" = 1'-0"



3
TYP. TOILET
1/4" = 1'-0"



5
TYP. E.W.C. ELEVATION
1/4" = 1'-0"



6
HANDICAP ACCESSIBLE W.C.
1/4" = 1'-0"

NOTE: CONTRACTOR TO VERIFY THAT THE MOUNTING HEIGHTS OF ALL WALL MOUNTED FIXTURES (IE. PLUMBING FIXTURES, GRAB BARS, MIRRORS, ETC.) MEET ALL APPLICABLE CODES & STANDARDS PRIOR TO INSTALLATION.

AGP
the Abila Griffin
Partnership L.L.C.
201 N. BROADWAY
SUITE 210
MOORE, OK. 73160
405.735.3477
AGP@theAGP.net
www.theAGP.net

MOB ENGINEERING
CIVIL
KFC ENGINEERING
STRUCTURAL
SALAS ORBEN
MECHANICAL/ELECTRICAL

STATE OF OKLAHOMA
MICHAEL L. ABILA
2639
4/25/22

CS
drawn by
MA
checked by
MARCH 2022
date
revisions
1 ADD #1, 7-11-22
2 ADD #2, 7-29-22
3 CB-4

MOORE PUBLIC SCHOOLS
BOARD OF EDUCATION
MOORE, OKLAHOMA
MOORE Public Schools
LEARNING FOR LIFE

CLASSROOM ADDITION
MOORE WEST
JUNIOR HIGH SCHOOL

Sheet No.
A104

OWNERSHIP USE OF DOCUMENTS:
AGP EXPRESSLY RESERVES ITS
COPYRIGHT AND OTHER PROPERTY
RIGHTS OF ALL PLANS AND DRAWINGS
DESIGNED AND/OR PRODUCED BY
AGP. ANY REPRODUCTION OF THESE
DRAWINGS IN ANY FORM OR MANNER
WITHOUT THE EXPRESSED WRITTEN
CONSENT OF AGP.



CS
drawn by
MA
checked by
MARCH 2022
date

revisions
1 ADD #1, 7-11-22
2 ADD #2, 7-29-22
3 CB-4

MOORE PUBLIC SCHOOLS
BOARD OF EDUCATION
MOORE, OKLAHOMA

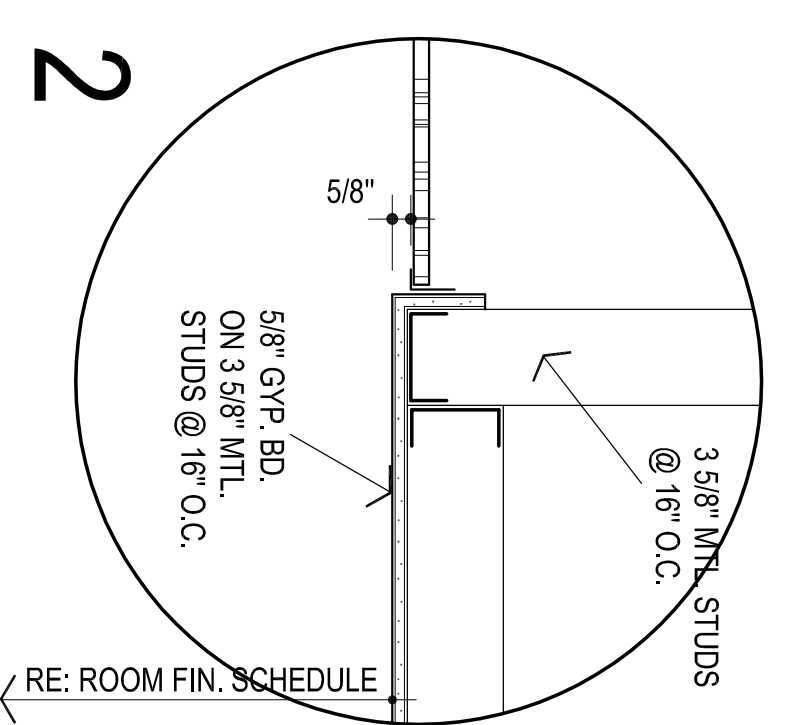
LEARNING FOR LIFE
MOORE Public Schools

CLASSROOM ADDITION
MOORE WEST
JUNIOR HIGH SCHOOL

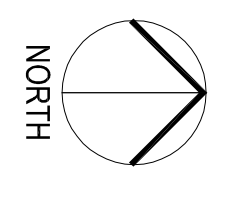
Sheet No.

A105

OWNERSHIP USE OF DOCUMENTS:
AGP EXPRESSLY RESERVES ITS
COPYRIGHT AND OTHER PROPERTY
RIGHTS OF ALL PLANS AND DRAWINGS
DESIGNED AND/OR PRODUCED BY
AGP. ANY REPRODUCTION OF THESE
PLANS IN ANY FORM OR MANNER
WITHOUT THE EXPRESSED WRITTEN
CONSENT OF AGP.



REFLECTED CEILING PLAN
3/32" = 1'-0"



1

EXISTING BUILDING
NO WORK UNLESS
NOTED OTHERWISE

NEW ADDITION

LEGEND:

- MECHANICAL OPENINGS
- ELECTRICAL FIXTURES
- CEILING MOUNTED SMOKE DETECTOR, RE. ELEC

- NOTES:
1. REFER MECHANICAL & ELECTRICAL FOR ANY ADDITIONAL CEILING MOUNTED FIXTURES
 2. REFER TO SHEET A100 FOR LOCATIONS OF FIRE-RATED WALLS

CONSTRUCTION BULLETIN # 04

Client: Abla Griffin Partnership
Project Name: Moore West JH Classroom Addition
Project Number: 2021-02932-00

November 11, 2022

Requested by: Owner
 Contractor:
 Salas O'Brien:

To: Mike Abla, Clay Griffin, AGP



This Construction Bulletin is issued to:

- Offer additional information for clarification or supplemental drawings for layout assistance.
- Request cost and time impact to initiate a change to the Contract Documents. Owner approval is required, do not commence with revisions unless directed in writing. Avoid Work in areas that may be affected by proposed change until approved or rejected. Once approved, forward Change Order documentation as required by the Contract Documents.
- Direct a required change in the Contract Documents. Proceed with change(s) as indicated. Forward Change Order documentation as required by the Contract Documents.
- Response to RFI _____.

Item No.	Description	Attachment
1	Refer to drawings for changes shown in clouds and deltas.	E101, E201
2	Refer to drawings for changes shown in clouds and deltas.	P101, P111 P401, P402
3	Refer to drawings for changes shown in clouds and deltas.	M101

END OF CB-04





- GENERAL NOTES**
- OCCUPANCY SENSOR LOCATIONS ARE FOR DESIGN INTENT ONLY. LOCATE OCCUPANCY SENSORS PER MANUFACTURER'S WRITTEN INSTALLATION INSTRUCTIONS.
 - CONNECT BATTERY PACKS TO UNSWITCHED HOT OF LOCAL LIGHTING CIRCUIT.
 - COORDINATE EXACT LOCATIONS AND MOUNTING HEIGHTS OF LIGHT FIXTURES WITH HVAC EQUIPMENT AND OTHER DEVICES/EQUIPMENT.
 - COORDINATE LIGHT SWITCHES WITH THERMOSTATS AND OTHER WALL MOUNTED DEVICES.
 - PROVIDE RELAY CONTACTOR FOR EXTERIOR LIGHTING. RELAY SHALL INTERLOCK WITH THE NEAREST EXISTING LIGHTING CIRCUIT SUCH THAT THE EXISTING LIGHTING CONTROLS SHALL CONTROL THE NEW EXTERIOR LIGHTING.
 - REFER TO '8/E501' FOR ADDITIONAL INFORMATION REGARDING RESTROOM LIGHTING CONTROLS.

AGP
the Abla Griffin
Partnership L.L.C.

201 N. BROADWAY
SUITE 210
MOORE, OK. 73160
405.735.3477
AGP@theAGP.net
www.theAGP.net

KFC ENGINEERING
STRUCTURAL
SALAS O'BRIEN
MECHANICAL / ELECTRICAL



DW
drawn by
TVO
checked by
MARCH 2022
date
07/22/22 AD01
revisions
11/11/22 CB04

MOORE PUBLIC SCHOOLS
BOARD OF EDUCATION
MOORE, OKLAHOMA



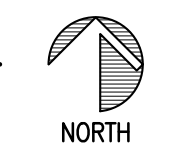
CLASSROOM ADDITION
MOOREWEST
JUNIOR HIGH SCHOOL

sheet no:

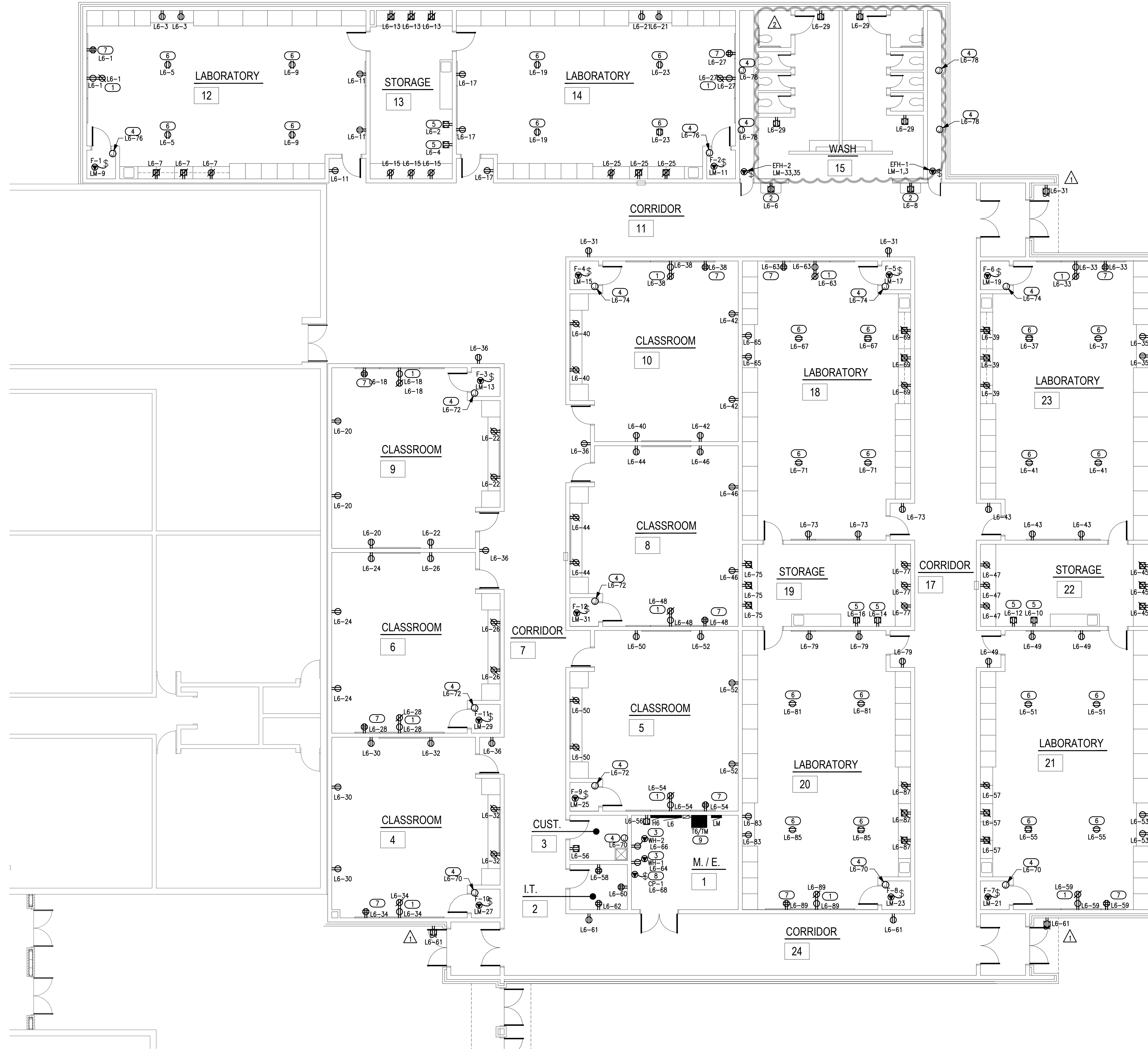
E101



2600 Van Buren St., Suite 2635
Norman, Oklahoma 73072
P: 405.364.9926 | CA#: 7059 Expiration Date: 6/30/2023
Salas O'Brien Project No.: 2021-02932-00



OWNERSHIP USE OF DOCUMENTS:
AGP EXPRESSLY RESERVES ITS
COPYRIGHT AND OTHER PROPERTY
RIGHTS OF ALL PLANS AND DRAWINGS
DESIGNED AND/OR PRODUCED. PLANS
AND DRAWINGS ARE NOT TO BE
REPRODUCED IN ANY FORM OR MANNER
WITHOUT THE EXPRESSED WRITTEN
CONSENT OF AGP.



- ### GENERAL NOTES
- COORDINATE EXACT LOCATIONS OF DEVICES SHOWN WITH OTHER EQUIPMENT. COORDINATE EXACT LOCATIONS OF CEILING MOUNTED DEVICES WITH LIGHTS, HVAC EQUIPMENT, AND OTHER DEVICES.
 - COORDINATE WITH MC AND PROVIDE ALL RELAYS, CONNECTIONS, AND ALL DEVICES NECESSARY TO INTERLOCK EXHAUST FANS, DAMPERS, ETC WITH PROPER CONTROL DEVICES.
 - COORDINATE EXACT LOCATIONS OF MECHANICAL EQUIPMENT WITH MECHANICAL CONTRACTOR.

- ### KEYED NOTES
- RECEPTACLE FOR SMART BOARD (BY OWNER) IN A RECESSED BACK BOX. REFER TO DETAIL 'E501/9' FOR ADDITIONAL INFORMATION.
 - PROVIDE 120V RECEPTACLE FOR WATER COOLER. COORDINATE EXACT LOCATIONS AND REQUIREMENTS WITH OWNER/ARCHITECT PRIOR TO ROUGH IN.
 - PROVIDE 120V RECEPTACLE FOR WATER HEATER. COORDINATE EXACT LOCATIONS AND REQUIREMENTS WITH PLUMBING CONTRACTOR PRIOR TO ROUGH IN.
 - PROVIDE 120V CONNECTION FOR TRAP PRIMER LOCATED ON WALL 5'-0" AFF. COORDINATE EXACT LOCATION AND REQUIREMENTS WITH PLUMBING CONTRACTOR PRIOR TO ROUGH IN.
 - PROVIDE DEDICATED 120V RECEPTACLES FOR FRIDGE & FREEZER. COORDINATE FINAL REQUIREMENTS AND LOCATIONS WITH ARCHITECT/OWNER PRIOR TO ROUGH-IN. ADJUST CONNECTION AS REQUIRED FOR A COMPLETE INSTALLATION.
 - PROVIDE 120V DROP CORD RECEPTACLE FOR GENERAL USE. COORDINATE FINAL LOCATIONS AND REQUIREMENTS WITH OWNER/ARCHITECT PRIOR TO ROUGH-IN. REFER TO DETAIL 'E501/6' FOR ADDITIONAL INFORMATION.
 - APPROXIMATE LOCATION OF TEACHERS DESK. COORDINATE FINAL LOCATION AND REQUIREMENTS WITH OWNER/ARCHITECT PRIOR TO ROUGH-IN. REFER TO DETAIL 'E501/9' FOR ADDITIONAL INFORMATION.
 - PROVIDE 120V CONNECTION FOR CIRCULATION PUMP. CP-1 SHALL SERVE BOTH WH-1 & WH-2. COORDINATE EXACT LOCATION AND REQUIREMENTS WITH PLUMBING CONTRACTOR PRIOR TO ROUGH-IN.
 - PROVIDE ALL MOUNTINGS, SUPPORTS, ETC FOR STACKING TRANSFORMER 'T6' ON TOP OF TRANSFORMER 'TM'. REFER TO DETAIL 'E501/10' FOR ADDITIONAL INFORMATION.

AGP
the Abila Griffin
Partnership L.L.C.

201 N. BROADWAY
SUITE 210
MOORE, OK. 73160
405.735.3477
AGP@theAGP.net
www.theAGP.net

KFC ENGINEERING
STRUCTURAL
SALAS O'BRIEN
MECHANICAL / ELECTRICAL



DW
drawn by
TVO
checked by
MARCH 2022
date
07/22/22 AD01
revisions
11/11/22 CB04

MOORE PUBLIC SCHOOLS
BOARD OF EDUCATION
MOORE, OKLAHOMA



CLASSROOM ADDITION
MOOREWEST
JUNIOR HIGH SCHOOL

sheet no:

E201

1 ELECTRICAL POWER PLAN
1/8" = 1'-0"

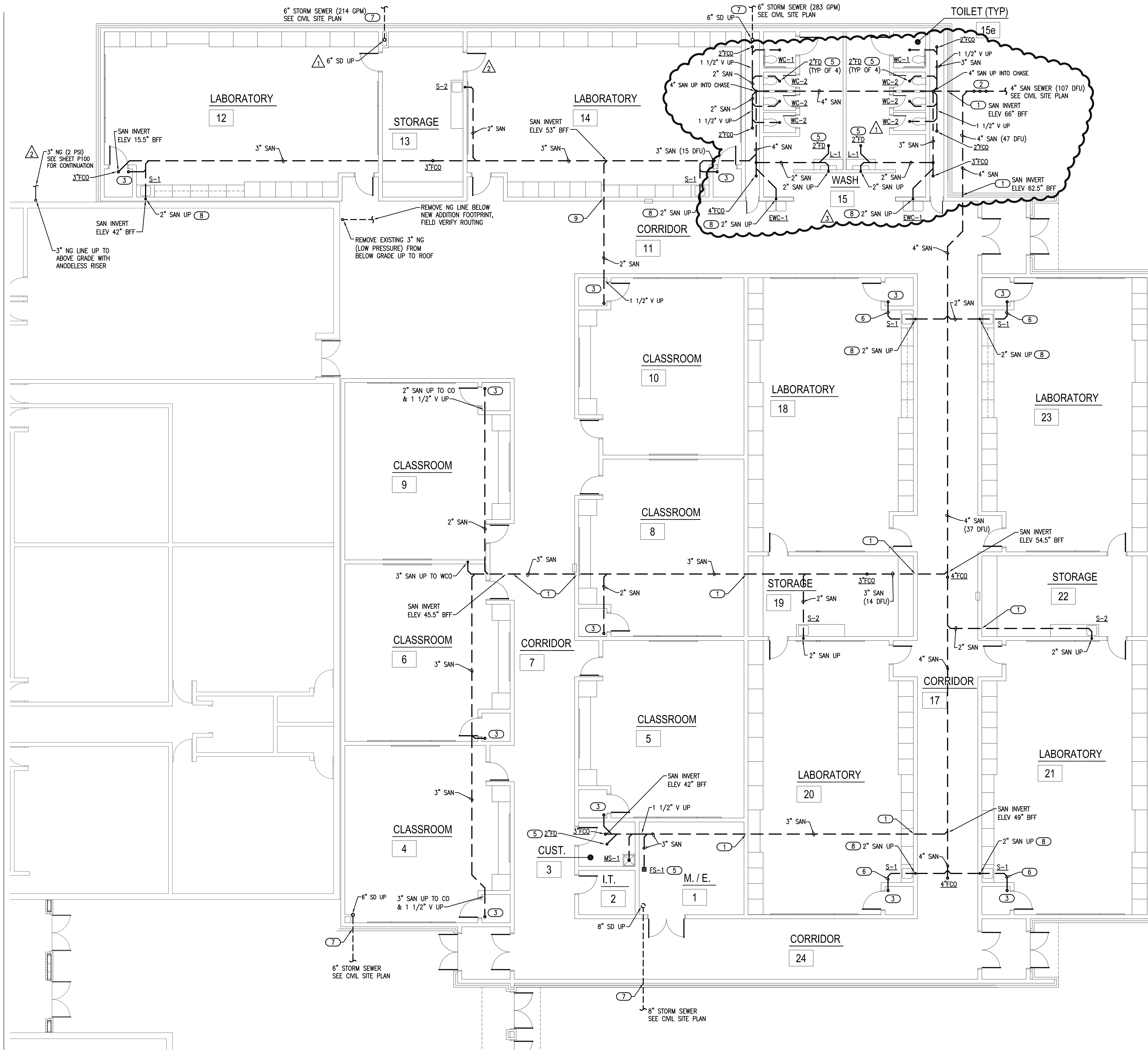


SALASOBRIEN
| expect a difference |

2600 Van Buren St., Suite 2635
Norman, Oklahoma 73072
P: 405.364.9926 | CA#: 7059 Expiration Date: 6/30/2023

Salas O'Brien Project No.: 2021-02932-00

OWNERSHIP USE OF DOCUMENTS:
AGP EXPRESSLY RESERVES ITS
COPYRIGHT AND OTHER PROPERTY
RIGHTS OF ALL PLANS AND DRAWINGS
DESIGNED AND/OR PRODUCED. PLANS
AND DRAWINGS ARE NOT TO BE
REPRODUCED IN ANY FORM OR MANNER
WITHOUT THE EXPRESSED WRITTEN
CONSENT OF AGP.



- ### GENERAL NOTES
- COORDINATE WORK WITH ALL OTHER TRADES ON SITE.
 - COORDINATE ALL BELOW GRADE PIPE ROUTING WITH STRUCTURAL FOUNDATIONS AND REQUIRED PIPE SLEEVES THRU FOUNDATION PENETRATIONS.
 - FIELD VERIFY EXISTING CONDITIONS PRIOR TO COMMENCING WORK.
 - PRIOR TO COMMENCING WORK, COORDINATE WITH SITE CONTRACTOR FOR SANITARY SEWER AND WATER INVERT ELEVATIONS.
 - REFER TO PLUMBING FIXTURE SCHEDULE ON SHEET P601 FOR FIXTURE ROUGH-IN PIPE SIZES AND ADDITIONAL SIZES ON ISOMETRIC P401.
 - PIPE TRENCHES SHALL HAVE SAND BEDDING TO A MINIMUM POINT 6" ABOVE THE TOP OF PIPE. REFER TO SPECIFICATION SECTION 22 05 00.
 - INSTALL BELOW FLOOR 1/2" CW LINE TYPE K COPPER OR PEX-a FOR TRAP PRIMER TO FLOOR DRAINS. SLOPE LINE CONTINUOUSLY TOWARDS DRAIN. SEE DETAIL 1/P501.

- ### KEYED NOTES
- PROVIDE CAST IRON PIPE SLEEVE FOR SANITARY PIPE BELOW GRADE BEAM. INSTALL FOAM SPACER BLOCKS TO MAINTAIN PIPE IN CENTER OF SLEEVE. COORDINATE PIPE SLEEVE INSTALLATION WITH STRUCTURAL.
 - INSTALL 4" SANITARY BACKWATER VALVE AND 4" EXTERIOR CLEANOUT. PROVIDE CONCRETE PAD AT GRADE. SEE DETAIL 4/P501.
 - ROUTE 2" SANITARY LINE UP TO 2" AFF AND INSTALL 2x4 FITTING FOR HUB DRAIN. COORDINATE INSTALLATION WITH MC. ROUTE TRAP PRIMER LINE TO HUB DRAIN. MC TO ROUTE FURNACE CONDENSATE DRAIN LINES TO HUB DRAIN. SEE DETAIL 1/P501.
 - COORDINATE WITH STRUCTURAL FOR ROUTING SANITARY UP TO ABOVE GRADE BEAM AND UP INTO WALL ABOVE.
 - INSTALL BELOW FLOOR 1/2" CW LINE TYPE K COPPER OR PEX-a FOR TRAP PRIMER TO FLOOR DRAIN. SLOPE LINE CONTINUOUSLY TOWARDS DRAIN. SEE DETAIL 1/P501.
 - 2" SANITARY LINE SERVING HUB DRAIN HAS MAXIMUM HEIGHT OF 42" FROM OPENING TO TRAP WEIR PER PLUMBING CODE. LOCATE AS REQUIRED TO ROUTE UNDER GRADE BEAM.
 - PROVIDE CAST IRON PIPE SLEEVE FOR STORM PIPE THRU FOUNDATION WALL. INSTALL FOAM SPACER BLOCKS TO MAINTAIN PIPE IN CENTER OF SLEEVE. COORDINATE PIPE SLEEVE INSTALLATION WITH STRUCTURAL.
 - ROUTE 2" SANITARY LINE BELOW GRADE BEAM WITH 2" SANITARY UP THRU GRADE BEAM TO SERVE SINK. PROVIDE CAST IRON PIPE SLEEVE THRU GRADE BEAM. INSTALL FOAM SPACER BLOCKS TO MAINTAIN PIPE IN CENTER OF SLEEVE. COORDINATE PIPE SLEEVE INSTALLATION WITH STRUCTURAL.
 - DROP 2" SANITARY TO GO UNDER GRADE BEAM. PROVIDE CAST IRON PIPE SLEEVE FOR SANITARY PIPE UNDER GRADE BEAM. INSTALL FOAM SPACER BLOCKS TO MAINTAIN PIPE IN CENTER OF SLEEVE. COORDINATE PIPE SLEEVE INSTALLATION WITH STRUCTURAL.

AGP
 the Abila Griffin
 Partnership L.L.C.
 201 N. BROADWAY
 SUITE 210
 MOORE, OK. 73160
 405.735.3477
 AGP@theAGP.net
 www.theAGP.net

KFC ENGINEERING
 STRUCTURAL
 SALAS O'BRIEN
 MECHANICAL/ELECTRICAL



KPP
 drawn by
 AL
 checked by
 MARCH 2022
 date
 07/22/22 AD01
 revisions
 09/06/22 CB-1
 11/11/22 CB04

MOORE PUBLIC SCHOOLS
 BOARD OF EDUCATION
 MOORE, OKLAHOMA



CLASSROOM ADDITION
 MOOREWEST
 JUNIOR HIGH SCHOOL

sheet no:

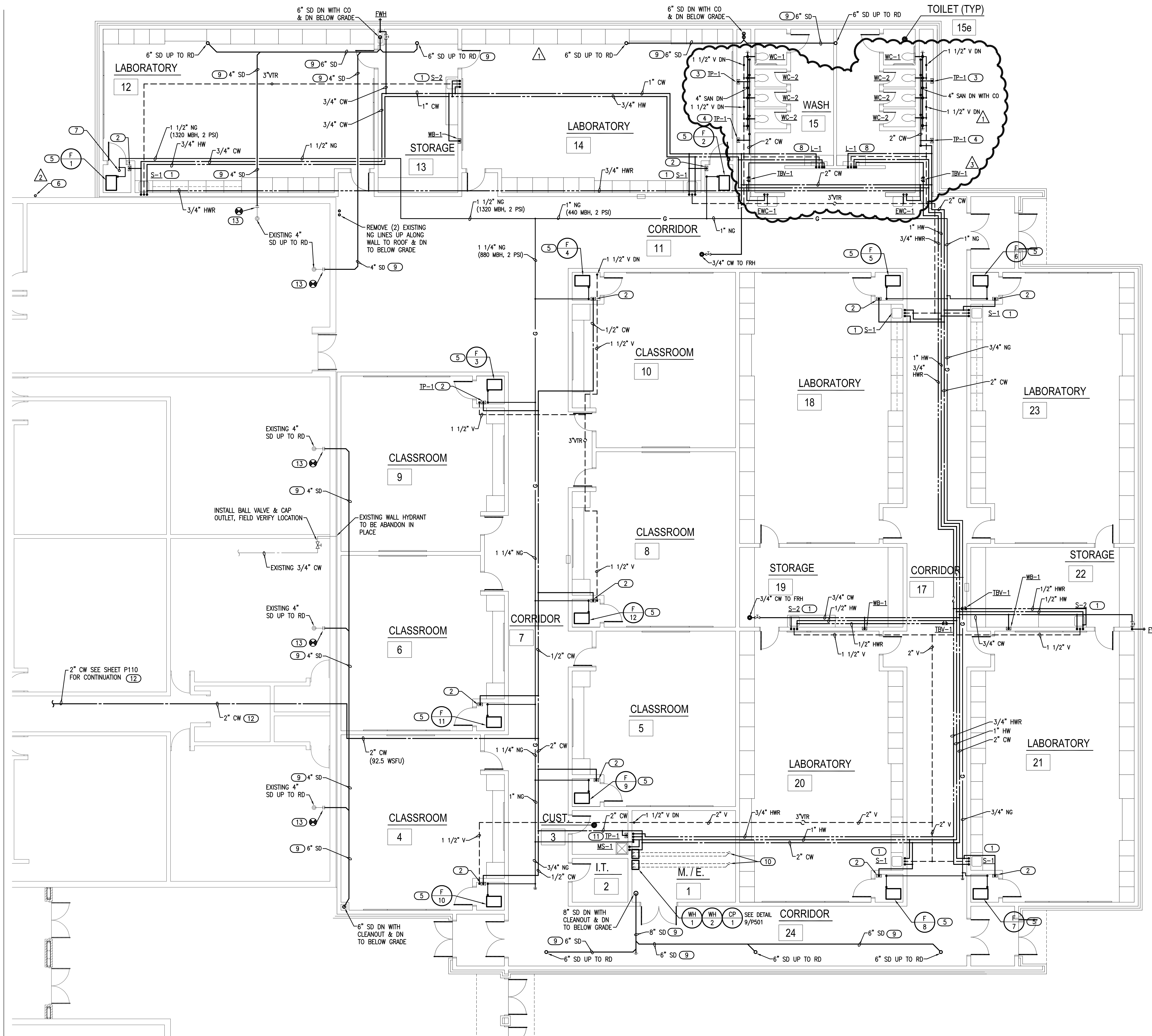
P101

1 PLUMBING PLAN - BELOW GRADE
 1/8" = 1'-0"



SALAS O'BRIEN
 [respect a difference]
 2600 Van Buren St., Suite 2635
 Norman, Oklahoma 73072
 P: 405.364.9926 | CA#:7058 Expiration Date: 6/30/2023
 Salas O'Brien Project No.: 2021-02932-00

OWNERSHIP USE OF DOCUMENTS:
 AGP EXPRESSLY RESERVES ITS
 COPYRIGHT AND OTHER PROPERTY
 RIGHTS OF ALL PLANS AND DRAWINGS
 DESIGNED AND/OR PRODUCED. PLANS
 AND DRAWINGS ARE NOT TO BE
 REPRODUCED IN ANY FORM OR MANNER
 WITHOUT THE EXPRESSED WRITTEN
 CONSENT OF AGP.



- ### GENERAL NOTES
- COORDINATE WORK WITH ALL OTHER TRADES ON SITE.
 - PROVIDE WATER HAMMER ARRESTORS (HA) ON WATER LINES TO FLUSH VALVES, SENSOR FAUCETS AND QUICK CLOSING VALVES. LOCATE UNITS IN ACCESSIBLE LOCATIONS.
 - SINK AND LAVATORY WATER SUPPLY STUB OUTS SHALL BE COPPER PIPE WITH SUPPORT BRACKET FASTENED IN WALL CAVITY.
 - FIRE SEAL ALL PENETRATIONS THRU RATED STRUCTURES TO MAINTAIN FIRE RATING.
 - REFER TO PLUMBING FIXTURE SCHEDULE ON SHEET P601 FOR FIXTURE ROUGH-IN PIPE SIZES AND ADDITIONAL SIZES ON ISOMETRIC P402.
 - PROVIDE ACCESS PANELS FOR ALL VALVES/DEVICES ABOVE HARD CEILINGS AND BEHIND WALLS.
 - ALL GAS PIPE SHALL COMPLY WITH IFGC. BRANCH LINES SHALL TAP OFF TOP OF GAS MAINS AND INSTALL SHUT-OFF VALVE ON BRANCH LINE.
 - TRAP PRIMER LINES SHALL BE COPPER TYPE "K" OR PEX-g TUBING WITH CONTINUOUS SLOPE TOWARDS DRAIN CONNECTION.
 - COORDINATE HEIGHT OF EXTERIOR FREEZELESS WALL HYDRANT (FWH) WITH GC AND/OR ARCHITECT. SEAL FIXTURE FLANGE WATERTIGHT.

- ### KEYED NOTES
- INSTALL THERMOSTATIC MIXING VALVE (TMV-1) BELOW SINK. CLASSROOM SINKS SEE DETAIL 8/P501. STORAGE ROOM SINKS SEE DETAIL 5/P501.
 - PROVIDE 1/2" CW WITH STRAINER TO TRAP PRIMER (TP-1) IN ACCESSIBLE LOCATION IN FURNACE CLOSET. ROUTE 1/2" LINE FROM UNIT TO HUB DRAIN. COORDINATE POWER WITH EC. SEE DETAIL 1/P501.
 - PROVIDE 1/2" CW WITH STRAINER TO TRAP PRIMER (TP-1) IN ACCESSIBLE LOCATION ON WALL IN PLUMBING CHASE. ROUTE (4) 1/2" LINES FROM DISTRIBUTION UNIT TO FLOOR DRAINS IN TOILET ROOMS. SEE DETAIL 1/P501.
 - PROVIDE 1/2" CW WITH STRAINER TO TRAP PRIMER (TP-1) IN ACCESSIBLE LOCATION ON WALL IN PLUMBING CHASE. ROUTE (1) 1/2" LINES FROM DISTRIBUTION UNIT TO FLOOR DRAIN NEAR LAVATORY. SEE DETAIL 1/P501.
 - ROUTE 1/2" NATURAL GAS (2 PSI) LINE TO FURNACE. PROVIDE BALL VALVE, DRIP LEG, PRESSURE REGULATOR (2 PSI TO 7"W.C.) AND FINAL UNIT CONNECTION. COORDINATE CONNECTION WITH MC. SEE DETAIL 7/P501.
 - ROUTE 3" NATURAL GAS (3450 MBH, 2 PSI) UP FROM BELOW GRADE WITH SHUT-OFF VALVE AT 2'-0" ABOVE GRADE. ROUTE 3" NATURAL GAS UP ALONG WALL TO ROOF. SEE SHEET P201 FOR CONTINUATION.
 - ROUTE 1 1/2" NATURAL GAS (1400 MBH, 2 PSI) DOWN FROM ROOF WITH SHUT-OFF VALVE BELOW ROOF STRUCTURE. LOCATION IN ACCESSIBLE LOCATION. COORDINATE LOCATION WITH DUCTWORK.
 - INSTALL THERMOSTATIC MIXING VALVE (TMV-1) BELOW LAVATORY L-1. ROUTE 1/2" HWR LINE FROM FIXTURE WITH THERMOSTATIC BALANCING VALVE (TBV-1) PRIOR TO CONNECTION TO HWR MAIN SEE DETAIL 6/P501.
 - INSULATED STORM DRAIN WITH SLOPE AT 1/8" PER FOOT.
 - WATER HEATER 2" CONCENTRIC VENT UP THRU ROOF.
 - PROVIDE 1/2" CW WITH STRAINER TO TRAP PRIMER (TP-1) IN ACCESSIBLE LOCATION ON WALL IN CUST RM 3. ROUTE (3) 1/2" LINES FROM DISTRIBUTION UNIT TO FLOOR DRAIN, HUB DRAIN AND FLOOR SINK. SEE DETAIL 1/P501.
 - COORDINATE WITH GC FOR CEILING REMOVAL AND REPLACEMENT FOR INSTALLING NEW COLD WATER MAIN THRU EXISTING BUILDING TO NEW ADDITION.
 - REMOVE SECTION OF EXISTING STORM DRAIN AS REQUIRED FOR CONNECTION OF NEW 4" STORM DRAIN AND EXTEND INTO NEW ADDITION. COORDINATE WITH GC FOR CEILING REMOVAL AND REPLACEMENT TO ACCESS STORM DRAIN LINES.

AGP

the Abba Griffin Partnership L.L.C.

201 N. BROADWAY
SUITE 210
MOORE, OK. 73160
405.735.3477
AGP@theAGP.net
www.theAGP.net

KFC ENGINEERING
STRUCTURAL

SALAS O'BRIEN
MECHANICAL / ELECTRICAL



KPP
drawn by

AL
checked by

MARCH 2022
date

07/22/22 AD01
revisions

09/06/22 CB-1
11/11/22 CB04

MOORE PUBLIC SCHOOLS
BOARD OF EDUCATION
MOORE, OKLAHOMA



CLASSROOM ADDITION
MOOREWEST
JUNIOR HIGH SCHOOL

sheet no:

P111

1 PLUMBING PLAN - ABOVE GRADE

1/8" = 1'-0"



SALAS O'BRIEN
[respect a difference]

2600 Van Buren St., Suite 2635
Norman, Oklahoma 73072
P: 405.364.9926 | CA#:7058 Expiration Date: 6/30/2023

Salas O'Brien Project No.: 2021-02932-00

OWNERSHIP USE OF DOCUMENTS:
AGP EXPRESSLY RESERVES ITS
COPYRIGHT AND OTHER PROPERTY
RIGHTS OF ALL PLANS AND DRAWINGS
DESIGNED AND/OR PRODUCED. PLANS
AND DRAWINGS ARE NOT TO BE
REPRODUCED IN ANY FORM OR MANNER
WITHOUT THE EXPRESSED WRITTEN
CONSENT OF AGP.



KPP	drawn by
AL	checked by
MARCH 2022	date
07/22/22 AD01	revisions
11/11/22 CB04	

MOORE PUBLIC SCHOOLS
BOARD OF EDUCATION
MOORE, OKLAHOMA



CLASSROOM ADDITION
MOOREWEST
JUNIOR HIGH SCHOOL

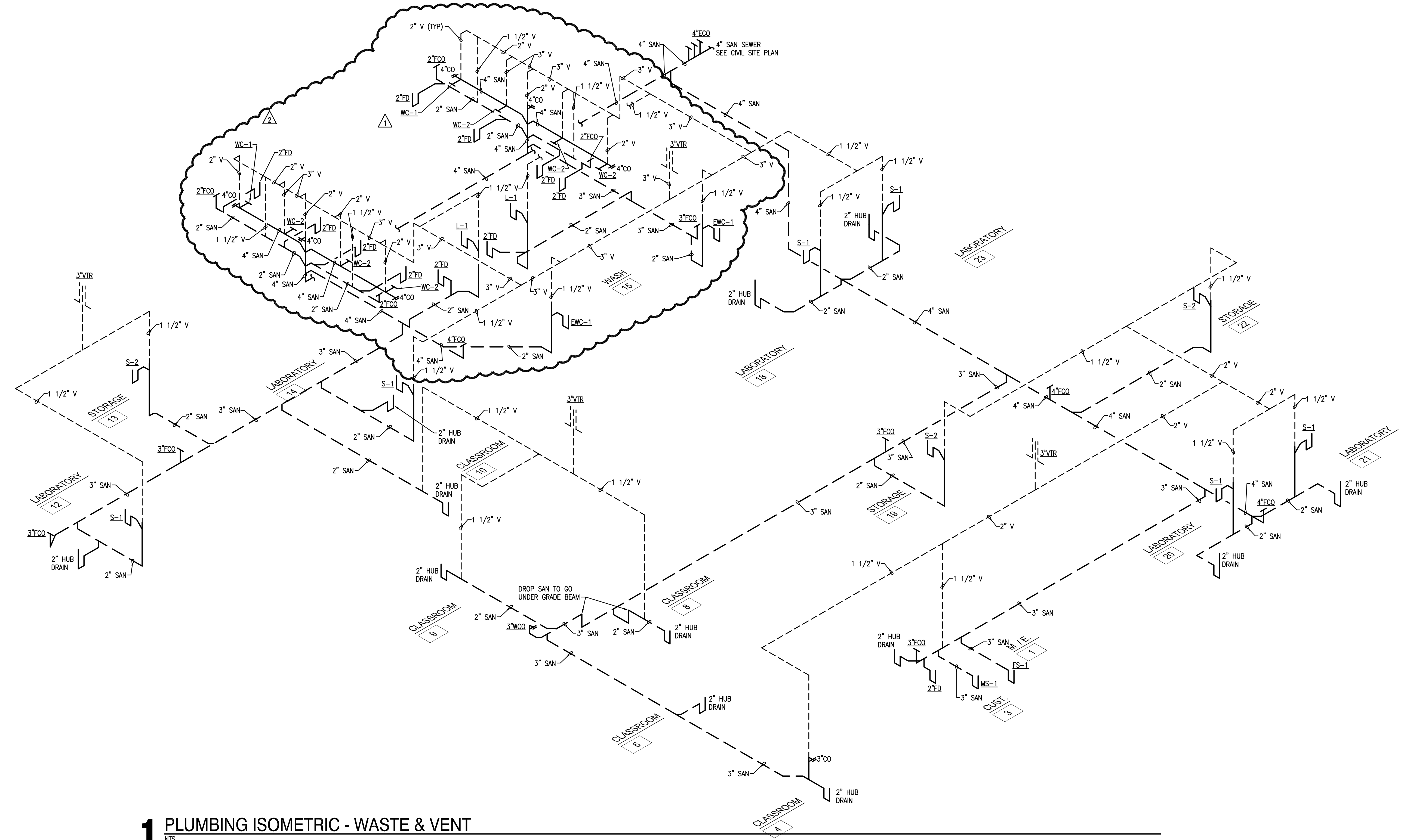
sheet no:

P401

SALAS O'BRIEN
[respect a difference]
2600 Van Buren St., Suite 2635
Norman, Oklahoma 73072
P: 405.364.9926 | CA#:7058 Expiration Date: 6/30/2023

Salas O'Brien Project No.: 2021-02932-00

OWNERSHIP USE OF DOCUMENTS:
AGP EXPRESSLY RESERVES ITS
COPYRIGHT AND OTHER PROPERTY
RIGHTS OF ALL PLANS AND DRAWINGS
DESIGNED AND/OR PRODUCED. PLANS
AND DRAWINGS ARE NOT TO BE
REPRODUCED IN ANY FORM OR MANNER
WITHOUT THE EXPRESSED WRITTEN
CONSENT OF AGP.



1 PLUMBING ISOMETRIC - WASTE & VENT

NTS



KPP
drawn by
AL
checked by
MARCH 2022
date
07/22/22 AD01
revisions
11/11/22 CB04

MOORE PUBLIC SCHOOLS
BOARD OF EDUCATION
MOORE, OKLAHOMA



CLASSROOM ADDITION
MOOREWEST
JUNIOR HIGH SCHOOL

sheet no:

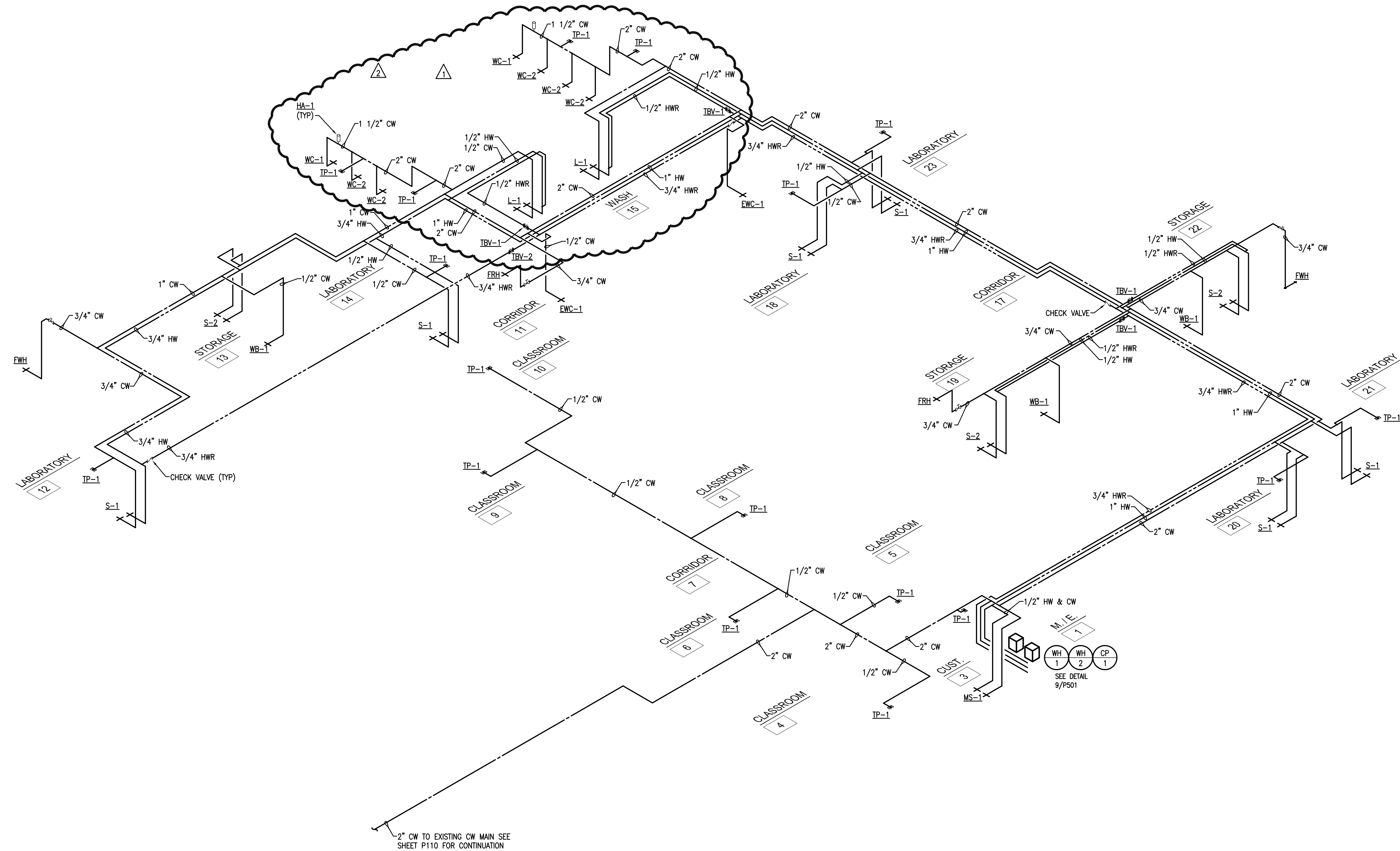
P402



2600 Van Buren St., Suite 2635
Norman, Oklahoma 73072
P: 405.364.9926 | CA#:7058 Expiration Date: 6/30/2023

Salas O'Brien Project No.: 2021-02932-00

OWNERSHIP USE OF DOCUMENTS:
AGP EXPRESSLY RESERVES ITS
COPYRIGHT AND OTHER PROPERTY
RIGHTS OF ALL PLANS AND DRAWINGS
DESIGNED AND/OR PRODUCED. PLANS
AND DRAWINGS ARE NOT TO BE
REPRODUCED IN ANY FORM OR MANNER
WITHOUT THE EXPRESSED WRITTEN
CONSENT OF AGP.



1 PLUMBING ISOMETRIC - WATER SUPPLY

NTS



drawn by
BA

checked by
DMG
MARCH 2022
date

07/22/22 AD01
revisions

11/11/22 CB04

MOORE PUBLIC SCHOOLS
BOARD OF EDUCATION
MOORE, OKLAHOMA



CLASSROOM ADDITION
MOOREWEST
JUNIOR HIGH SCHOOL

sheet no:

M101

SALAS O'BRIEN
[expect a difference]

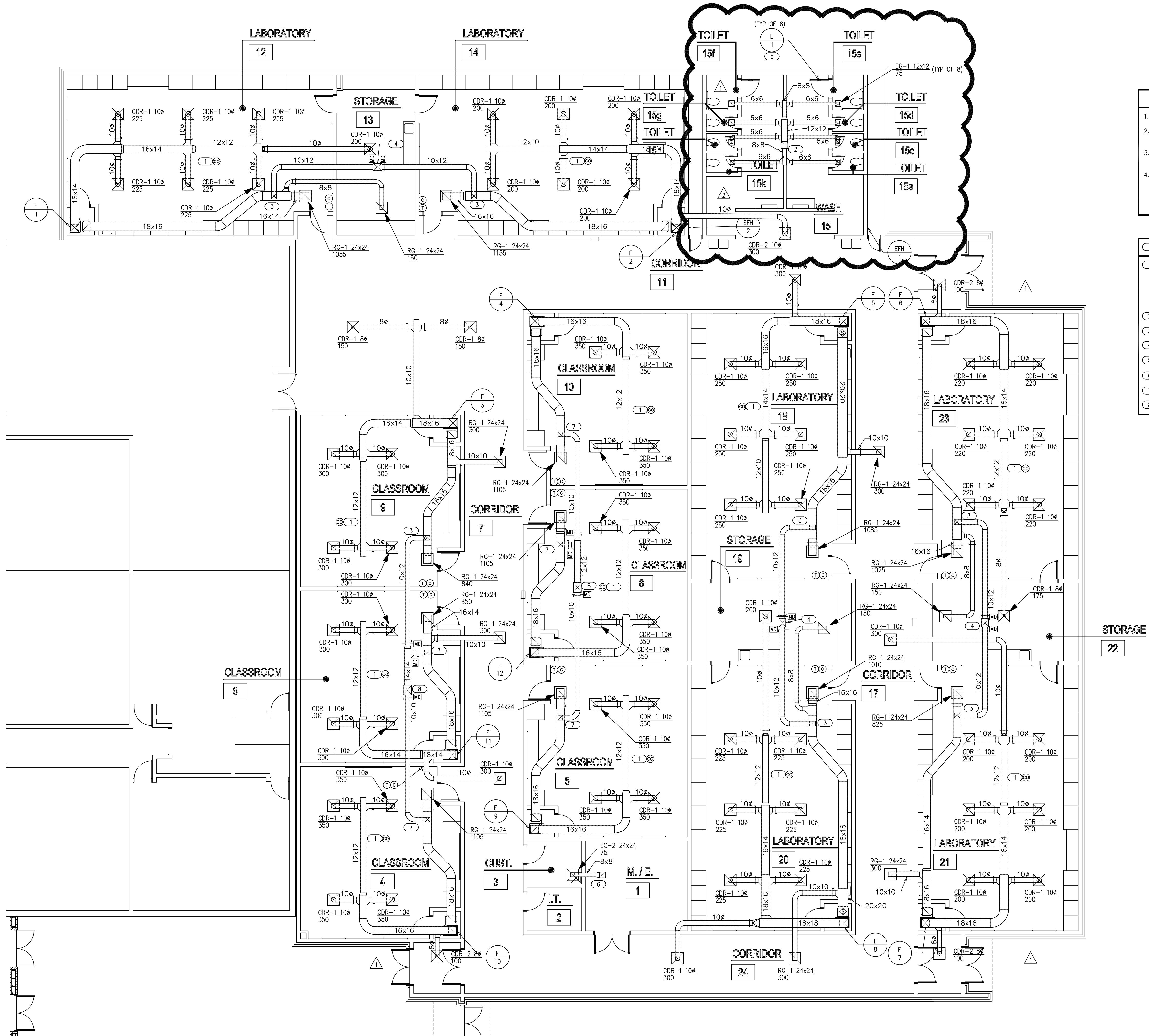
2600 Van Buren St., Suite 2635
Norman, Oklahoma 73072
P: 405.364.9926 | CA#:7058 Expiration Date: 6/30/2023

Salas O'Brien Project No.: 2021-02932-00

OWNERSHIP USE OF DOCUMENTS:
AGP EXPRESSLY RESERVES ITS
COPYRIGHT AND OTHER PROPERTY
RIGHTS OF ALL PLANS AND DRAWINGS
DESIGNED AND/OR PRODUCED. PLANS
AND DRAWINGS ARE NOT TO BE
REPRODUCED IN ANY FORM OR MANNER
WITHOUT THE EXPRESSED WRITTEN
CONSENT OF AGP.

- ### GENERAL NOTES
- COORDINATE WORK WITH ALL TRADES.
 - COORDINATE LOCATION OF THERMOSTATS AND CARBON MONOXIDE DETECTOR WITH E.C. ROUGH-IN BY E.C.
 - COORDINATE CARBON DIOXIDE SENSOR LOCATION WITH EARTHSMART PRIOR TO INSTALLATION.
 - M.C. SHALL PROVIDE CARBON MONOXIDE SENSORS WHERE NEEDED PER CODE FOR EXISTING EQUIPMENT THROUGHOUT THE ENTIRE BUILDING. M.C. IS RESPONSIBLE FOR SURVEYING ENTIRE BUILDING AND LOCATING FUEL BURNING HVAC EQUIPMENT FOR SENSOR LOCATIONS. COORDINATE WITH E.C. FOR POWER CONNECTIONS.

- ### KEYED NOTES
- CARBON MONOXIDE DETECTOR TO BE INSTALLED ACCORDING TO ALL APPLICABLE CODES. DETECTOR SHALL BE INSTALLED CENTRALLY ON CEILING. ALSO INCLUDE BATTERY BACKUP IN EVENT PRIMARY POWER IS INTERRUPTED. ALARM SIGNAL SHALL BE ROUTED TO ADMINISTRATION OFFICE. COORDINATE WITH E.C. WITH PRIMARY POWER CONNECTION AND SYSTEM CONNECTION.
 - DUCT UP 14x14 TO CONNECT TO ROOF EXHAUST OPENING.
 - DUCT 10x12 INTO RETURN DUCT.
 - DUCT UP 14x18 TO CONNECT TO ROOF HOOD.
 - PLACE DOOR LOUVER 8" FROM BOTTOM OF DOOR.
 - DUCT UP 12x12 TO CONNECT TO ROOF EXHAUST OPENING.
 - DUCT 10x10 INTO RETURN DUCT.
 - DUCT UP 16x20 TO CONNECT TO ROOF HOOD.



1 MECHANICAL DUCTWORK PLAN
1/8" = 1'-0"

