

**MOORE PUBLIC SCHOOLS -
MOORE WEST JUNIOR HIGH SCHOOL –
STEM ADDITION**

Moore Public Schools - Moore, Oklahoma
AGP - Moore, Oklahoma

CONSTRUCTION BULLETIN NO. 1

September 6, 2022

1. REVISE LOCATION OF NEW NATURAL GAS SERVICE AS PER ATTACHED DRAWINGS.

END OF CONSTRUCTION BULLETIN NO. 1

CONSTRUCTION BULLETIN # 01

Client: Abla Griffin Partnership
 Project Name: Moore West JH Classroom Addition
 Project Number: 2021-02932-00

September 6, 2022

Requested by: Owner
 Contractor:
 Salas O'Brien: Enter Name Here



To: Mike Alba, Clay Griffin, AGP

This Construction Bulletin is issued to:

- Offer additional information for clarification or supplemental drawings for layout assistance.
- Request cost and time impact to initiate a change to the Contract Documents. Owner approval is required, do not commence with revisions unless directed in writing. Avoid Work in areas that may be affected by proposed change until approved or rejected. Once approved, forward Change Order documentation as required by the Contract Documents.
- Direct a required change in the Contract Documents. Proceed with change(s) as indicated. Forward Change Order documentation as required by the Contract Documents.
- Response to RFI _____.

Item No.	Description	Attachment
1	P100 PLUMBING PLAN – SITE – OVERALL Refer to drawings for changes shown in clouds and deltas.	P100
2	P112 PLUMBING PLAN – BELOW GRADE Refer to drawings for changes shown in clouds and deltas.	P101
3	P111 PLUMBING PALN – ABOVE GRADE Refer to drawings for changes shown in clouds and deltas.	P111



Item No.	Description	Attachment
4	P201 PLUMBING PLAN – ROOF Refer to drawings for changes shown in clouds and deltas.	P201

END OF CB-01





KPP	drawn by
AL	checked by
MARCH 2022	date
09/06/22 CB-1	revisions

MOORE PUBLIC SCHOOLS
BOARD OF EDUCATION
MOORE, OKLAHOMA



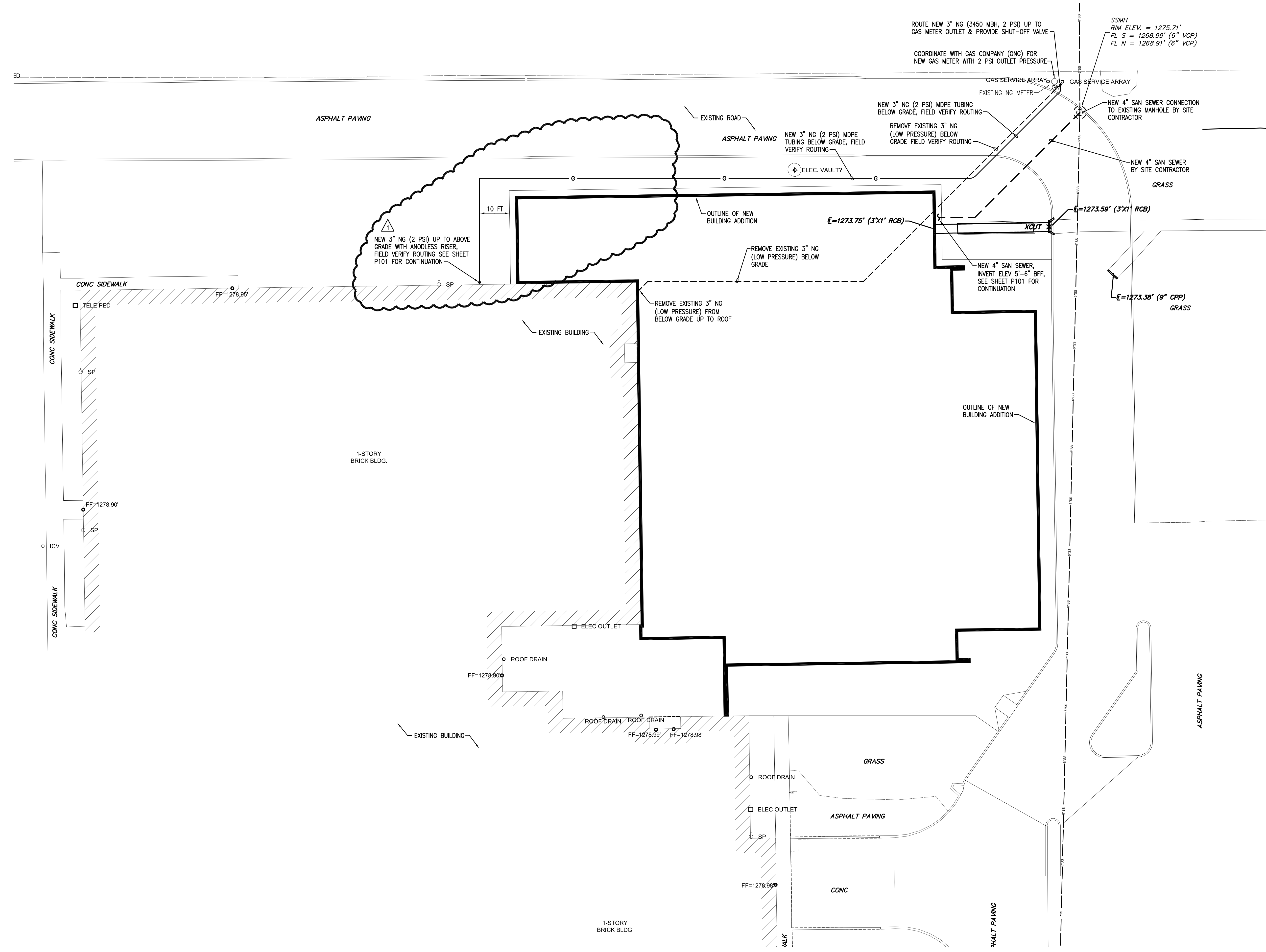
CLASSROOM ADDITION
MOOREWEST
JUNIOR HIGH SCHOOL

sheet no:

P100

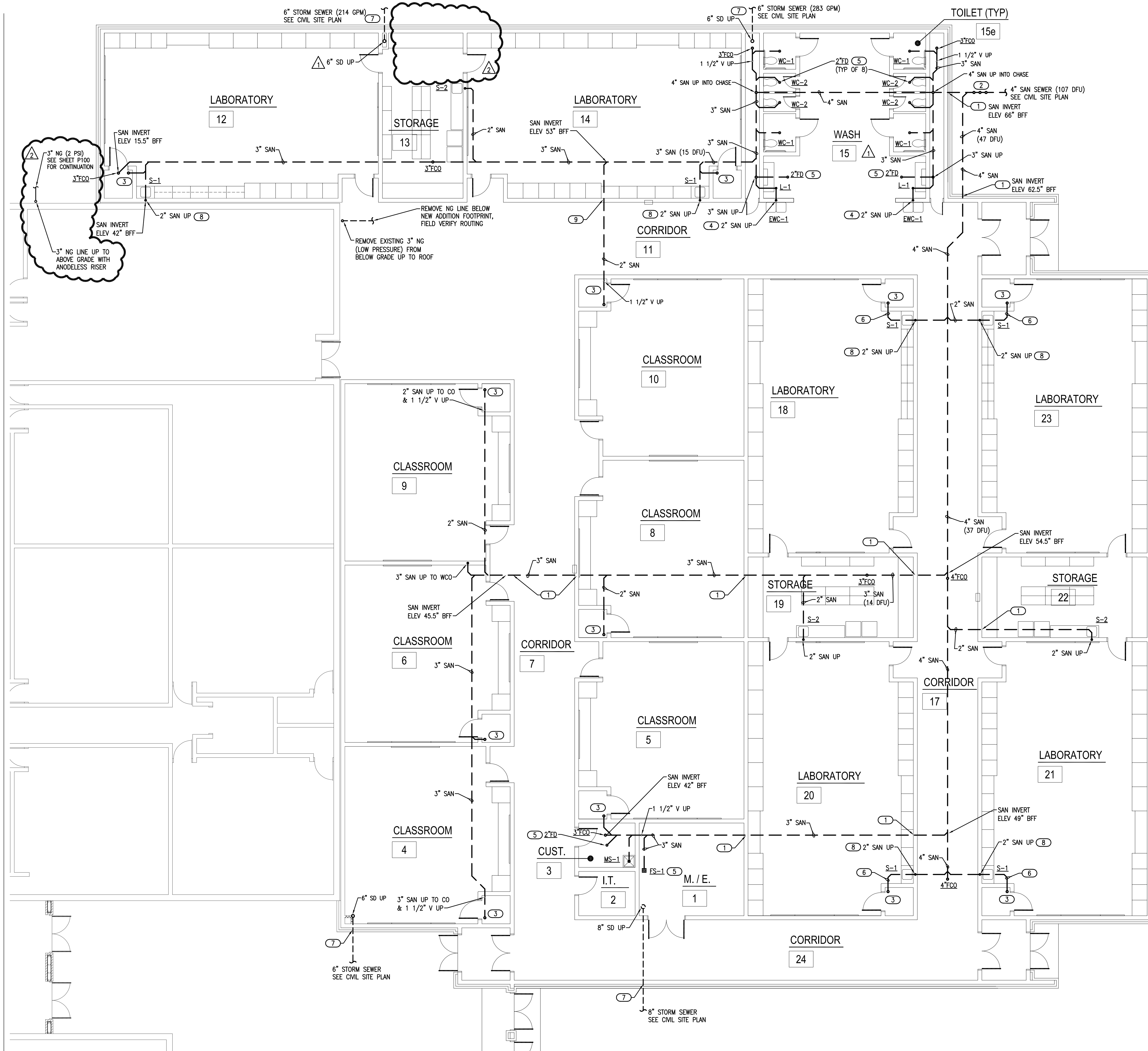
OWNERSHIP USE OF DOCUMENTS:
AGP EXPRESSLY RESERVES ITS
COPYRIGHT AND OTHER PROPERTY
RIGHTS OF ALL PLANS AND DRAWINGS
DESIGNED AND/OR PRODUCED. PLANS
AND DRAWINGS ARE NOT TO BE
REPRODUCED IN ANY FORM OR MANNER
WITHOUT THE EXPRESSED WRITTEN
CONSENT OF AGP.

SALAS O'BRIEN
[respect a difference]
2600 Van Buren St., Suite 2635
Norman, Oklahoma 73072
P: 405.364.9926 | CA#:7058 Expiration Date: 6/30/2023
Salas O'Brien Project No.: 2021-02932-00



1 PLUMBING PLAN - SITE - OVERALL
1/16" = 1'-0"





- ### GENERAL NOTES
- COORDINATE WORK WITH ALL OTHER TRADES ON SITE.
 - COORDINATE ALL BELOW GRADE PIPE ROUTING WITH STRUCTURAL FOUNDATIONS AND REQUIRED PIPE SLEEVES THRU FOUNDATION PENETRATIONS.
 - FIELD VERIFY EXISTING CONDITIONS PRIOR TO COMMENCING WORK.
 - PRIOR TO COMMENCING WORK, COORDINATE WITH SITE CONTRACTOR FOR SANITARY SEWER AND WATER INVERT ELEVATIONS.
 - REFER TO PLUMBING FIXTURE SCHEDULE ON SHEET P601 FOR FIXTURE ROUGH-IN PIPE SIZES AND ADDITIONAL SIZES ON ISOMETRIC P401.
 - PIPE TRENCHES SHALL HAVE SAND BEDDING TO A MINIMUM POINT 6" ABOVE THE TOP OF PIPE. REFER TO SPECIFICATION SECTION 22 05 00.
 - INSTALL BELOW FLOOR 1/2" CW LINE TYPE K COPPER OR PEX-a FOR TRAP PRIMER TO FLOOR DRAINS. SLOPE LINE CONTINUOUSLY TOWARDS DRAIN. SEE DETAIL 1/P501.

- ### KEYED NOTES
- PROVIDE CAST IRON PIPE SLEEVE FOR SANITARY PIPE BELOW GRADE BEAM. INSTALL FOAM SPACER BLOCKS TO MAINTAIN PIPE IN CENTER OF SLEEVE. COORDINATE PIPE SLEEVE INSTALLATION WITH STRUCTURAL.
 - INSTALL 4" SANITARY BACKWATER VALVE AND 4" EXTERIOR CLEANOUT. PROVIDE CONCRETE PAD AT GRADE. SEE DETAIL 4/P501.
 - ROUTE 2" SANITARY LINE UP TO 2" AFF AND INSTALL 2x4 FITTING FOR HUB DRAIN. COORDINATE INSTALLATION WITH MC. ROUTE TRAP PRIMER LINE TO HUB DRAIN. MC TO ROUTE FURNACE CONDENSATE DRAIN LINES TO HUB DRAIN. SEE DETAIL 1/P501.
 - COORDINATE WITH STRUCTURAL FOR ROUTING SANITARY UP TO ABOVE GRADE BEAM AND UP INTO WALL ABOVE.
 - INSTALL BELOW FLOOR 1/2" CW LINE TYPE K COPPER OR PEX-a FOR TRAP PRIMER TO FLOOR DRAIN. SLOPE LINE CONTINUOUSLY TOWARDS DRAIN. SEE DETAIL 1/P501.
 - 2" SANITARY LINE SERVING HUB DRAIN HAS MAXIMUM HEIGHT OF 42" FROM OPENING TO TRAP WEIR PER PLUMBING CODE. LOCATE AS REQUIRED TO ROUTE UNDER GRADE BEAM.
 - PROVIDE CAST IRON PIPE SLEEVE FOR STORM PIPE THRU FOUNDATION WALL. INSTALL FOAM SPACER BLOCKS TO MAINTAIN PIPE IN CENTER OF SLEEVE. COORDINATE PIPE SLEEVE INSTALLATION WITH STRUCTURAL.
 - ROUTE 2" SANITARY LINE BELOW GRADE BEAM WITH 2" SANITARY UP THRU GRADE BEAM TO SERVE SINK. PROVIDE CAST IRON PIPE SLEEVE THRU GRADE BEAM. INSTALL FOAM SPACER BLOCKS TO MAINTAIN PIPE IN CENTER OF SLEEVE. COORDINATE PIPE SLEEVE INSTALLATION WITH STRUCTURAL.
 - DROP 2" SANITARY TO GO UNDER GRADE BEAM. PROVIDE CAST IRON PIPE SLEEVE FOR SANITARY PIPE UNDER GRADE BEAM. INSTALL FOAM SPACER BLOCKS TO MAINTAIN PIPE IN CENTER OF SLEEVE. COORDINATE PIPE SLEEVE INSTALLATION WITH STRUCTURAL.

AGP

the Abila Griffin Partnership L.L.C.

201 N. BROADWAY
SUITE 210
MOORE, OK. 73160
405.735.3477
AGP@theAGP.net
www.theAGP.net

KFC ENGINEERING
STRUCTURAL
SALAS O'BRIEN
MECHANICAL/ELECTRICAL



KPP
drawn by
AL
checked by
MARCH 2022
date
07/22/22 AD01
revisions
09/06/22 CB-1

MOORE PUBLIC SCHOOLS
BOARD OF EDUCATION
MOORE, OKLAHOMA



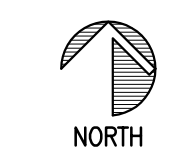
CLASSROOM ADDITION
MOOREWEST
JUNIOR HIGH SCHOOL

sheet no:

P101

1 PLUMBING PLAN - BELOW GRADE

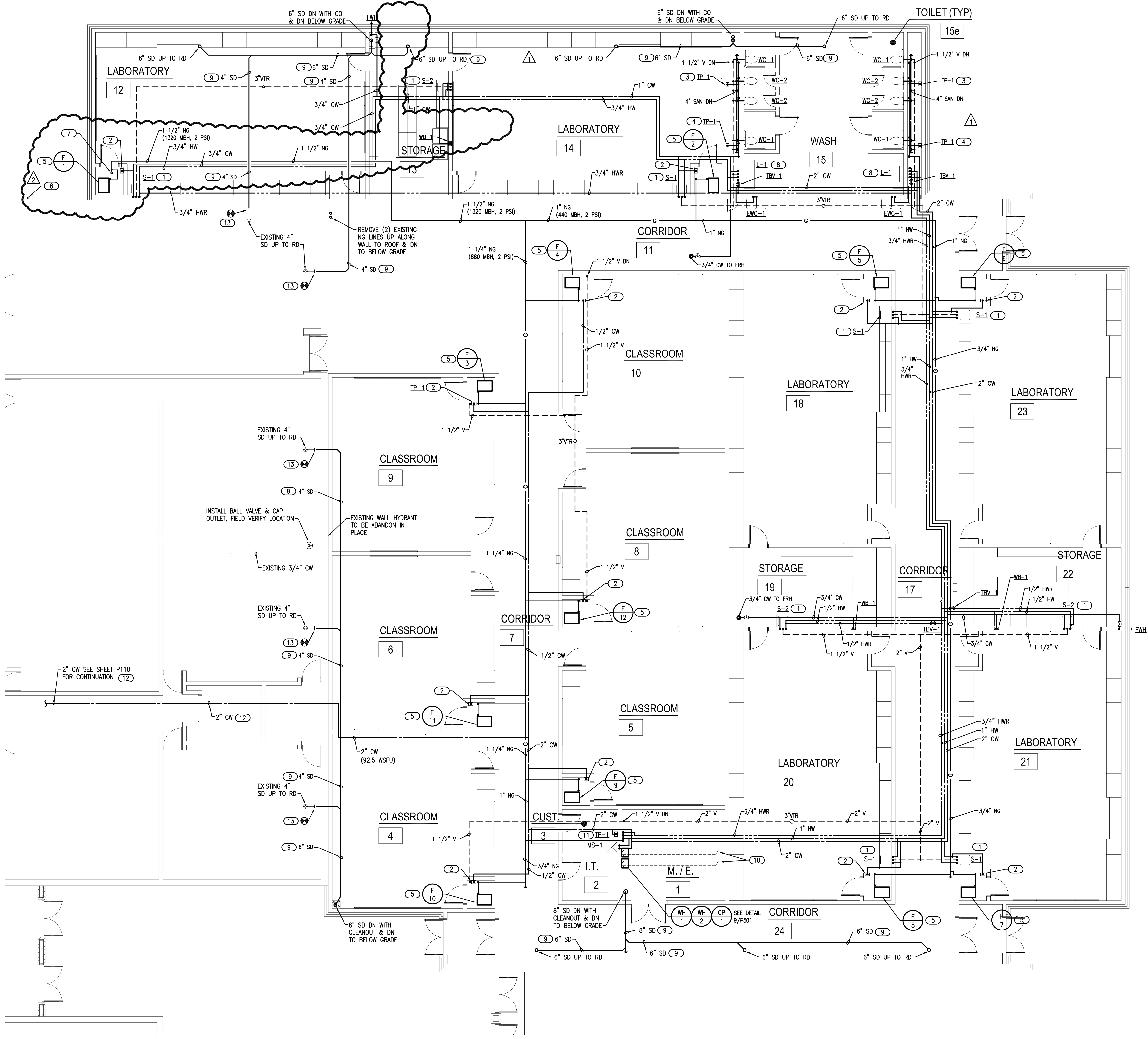
1/8" = 1'-0"



SALAS O'BRIEN
[respect a difference]

2600 Van Buren St., Suite 2635
Norman, Oklahoma 73072
P: 405.364.9926 | CA#:7058 Expiration Date: 6/30/2023
Salas O'Brien Project No.: 2021-02932-00

OWNERSHIP USE OF DOCUMENTS:
AGP EXPRESSLY RESERVES ITS COPYRIGHT AND OTHER PROPERTY RIGHTS OF ALL PLANS AND DRAWINGS DESIGNED AND/OR PRODUCED. PLANS AND DRAWINGS ARE NOT TO BE REPRODUCED IN ANY FORM OR MANNER WITHOUT THE EXPRESSED WRITTEN CONSENT OF AGP.



- ### GENERAL NOTES
- COORDINATE WORK WITH ALL OTHER TRADES ON SITE.
 - PROVIDE WATER HAMMER ARRESTORS (HA) ON WATER LINES TO FLUSH VALVES, SENSOR FAUCETS AND QUICK CLOSING VALVES. LOCATE UNITS IN ACCESSIBLE LOCATIONS.
 - SINK AND LAVATORY WATER SUPPLY STUB OUTS SHALL BE COPPER PIPE WITH SUPPORT BRACKET FASTENED IN WALL CAVITY.
 - FIRE SEAL ALL PENETRATIONS THRU RATED STRUCTURES TO MAINTAIN FIRE RATING.
 - REFER TO PLUMBING FIXTURE SCHEDULE ON SHEET P601 FOR FIXTURE ROUGH-IN PIPE SIZES AND ADDITIONAL SIZES ON ISOMETRIC P402.
 - PROVIDE ACCESS PANELS FOR ALL VALVES/DEVICES ABOVE HARD CEILINGS AND BEHIND WALLS.
 - ALL GAS PIPE SHALL COMPLY WITH IFGC. BRANCH LINES SHALL TAP OFF TOP OF GAS MAINS AND INSTALL SHUT-OFF VALVE ON BRANCH LINE.
 - TRAP PRIMER LINES SHALL BE COPPER TYPE "K" OR PEX-g TUBING WITH CONTINUOUS SLOPE TOWARDS DRAIN CONNECTION.
 - COORDINATE HEIGHT OF EXTERIOR FREEZELESS WALL HYDRANT (FWH) WITH GC AND/OR ARCHITECT. SEAL FIXTURE FLANGE WATERTIGHT.

- ### KEYED NOTES
- INSTALL THERMOSTATIC MIXING VALVE (TMV-1) BELOW SINK. CLASSROOM SINKS SEE DETAIL 8/P501. STORAGE ROOM SINKS SEE DETAIL 5/P501.
 - PROVIDE 1/2" CW WITH STRAINER TO TRAP PRIMER (TP-1) IN ACCESSIBLE LOCATION IN FURNACE CLOSET. ROUTE 1/2" LINE FROM UNIT TO HUB DRAIN. COORDINATE POWER WITH EC. SEE DETAIL 1/P501.
 - PROVIDE 1/2" CW WITH STRAINER TO TRAP PRIMER (TP-1) IN ACCESSIBLE LOCATION ON WALL IN PLUMBING CHASE. ROUTE (4) 1/2" LINES FROM DISTRIBUTION UNIT TO FLOOR DRAINS IN TOILET ROOMS. SEE DETAIL 1/P501.
 - PROVIDE 1/2" CW WITH STRAINER TO TRAP PRIMER (TP-1) IN ACCESSIBLE LOCATION ON WALL IN PLUMBING CHASE. ROUTE (2) 1/2" LINES FROM DISTRIBUTION UNIT TO FLOOR DRAINS IN TOILET ROOM AND NEAR LAVATORY. SEE DETAIL 1/P501.
 - ROUTE 1/2" NATURAL GAS (2 PSI) LINE TO FURNACE. PROVIDE BALL VALVE, DRIP LEG, PRESSURE REGULATOR (2 PSI TO 7"W.C.) AND FINAL UNIT CONNECTION. COORDINATE CONNECTION WITH MC. SEE DETAIL 7/P501.
 - ROUTE 3" NATURAL GAS (3450 MBH, 2 PSI) UP FROM BELOW GRADE WITH SHUT-OFF VALVE AT 2'-0" ABOVE GRADE. ROUTE 3" NATURAL GAS UP ALONG WALL TO ROOF. SEE SHEET P201 FOR CONTINUATION.
 - ROUTE 1 1/2" NATURAL GAS (1400 MBH, 2 PSI) DOWN FROM ROOF WITH SHUT-OFF VALVE BELOW ROOF STRUCTURE. LOCATION IN ACCESSIBLE LOCATION. COORDINATE LOCATION WITH DUCTWORK.
 - INSTALL THERMOSTATIC MIXING VALVE (TMV-1) BELOW LAVATORY L-1. ROUTE 1/2" HWR LINE FROM FIXTURE WITH THERMOSTATIC BALANCING VALVE (TBV-1) PRIOR TO CONNECTION TO HWR MAIN SEE DETAIL 6/P501.
 - INSULATED STORM DRAIN WITH SLOPE AT 1/8" PER FOOT.
 - WATER HEATER 2" CONCENTRIC VENT UP THRU ROOF.
 - PROVIDE 1/2" CW WITH STRAINER TO TRAP PRIMER (TP-1) IN ACCESSIBLE LOCATION ON WALL IN CUST RM 3. ROUTE (3) 1/2" LINES FROM DISTRIBUTION UNIT TO FLOOR DRAIN, HUB DRAIN AND FLOOR SINK. SEE DETAIL 1/P501.
 - COORDINATE WITH GC FOR CEILING REMOVAL AND REPLACEMENT FOR INSTALLING NEW COLD WATER MAIN THRU EXISTING BUILDING TO NEW ADDITION.
 - REMOVE SECTION OF EXISTING STORM DRAIN AS REQUIRED FOR CONNECTION OF NEW 4" STORM DRAIN AND EXTEND INTO NEW ADDITION. COORDINATE WITH GC FOR CEILING REMOVAL AND REPLACEMENT TO ACCESS STORM DRAIN LINES.

AGP

the Abba Griffin Partnership L.L.C.

201 N. BROADWAY
SUITE 210
MOORE, OK. 73160
405.735.3477
AGP@theAGP.net
www.theAGP.net

KFC ENGINEERING
STRUCTURAL

SALAS O'BRIEN
MECHANICAL / ELECTRICAL



KPP
drawn by

AL
checked by

MARCH 2022
date

07/22/22 AD01
revisions

09/06/22 CB-1
revisions

MOORE PUBLIC SCHOOLS
BOARD OF EDUCATION
MOORE, OKLAHOMA



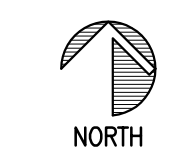
CLASSROOM ADDITION
MOOREWEST
JUNIOR HIGH SCHOOL

sheet no:

P111

1 PLUMBING PLAN - ABOVE GRADE

1/8" = 1'-0"

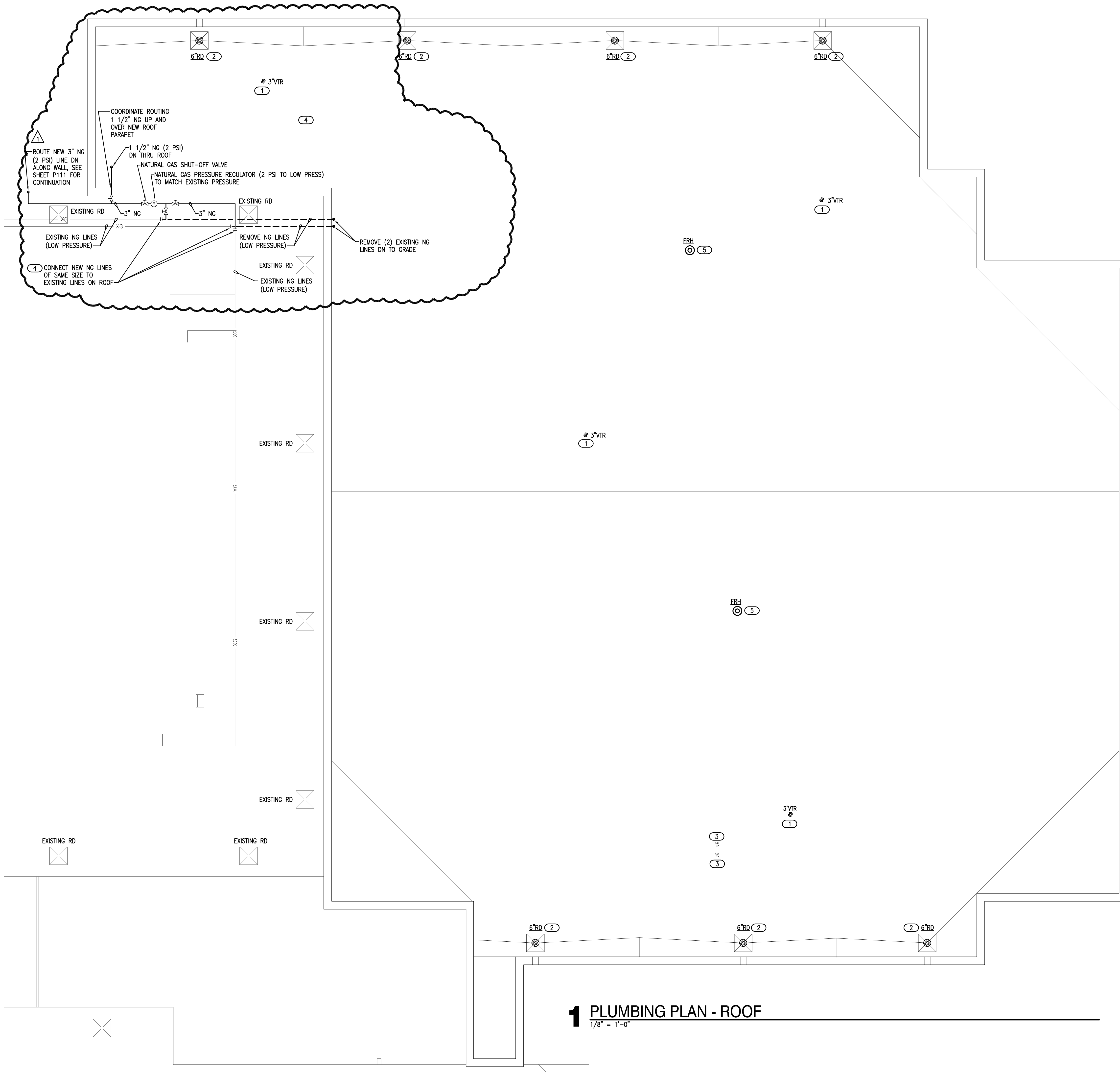


SALAS O'BRIEN
[respect a difference]

2600 Van Buren St., Suite 2635
Norman, Oklahoma 73072
P: 405.364.9926 | CA#:7058 Expiration Date: 6/30/2023

Salas O'Brien Project No.: 2021-02932-00

OWNERSHIP USE OF DOCUMENTS:
AGP EXPRESSLY RESERVES ITS
COPYRIGHT AND OTHER PROPERTY
RIGHTS OF ALL PLANS AND DRAWINGS
DESIGNED AND/OR PRODUCED. PLANS
AND DRAWINGS ARE NOT TO BE
REPRODUCED IN ANY FORM OR MANNER
WITHOUT THE EXPRESSED WRITTEN
CONSENT OF AGP.



- ### GENERAL NOTES
- COORDINATE WORK WITH ALL TRADES ON SITE.
 - ALL ABOVE GRADE EXTERIOR NATURAL GAS PIPE SHALL BE CLEANED AND DEGREASED PRIOR TO BEING PRIMED THEN PAINTED YELLOW WITH WEATHER RESISTANT ZINC RICH PAINT.
 - PIPE IDENTIFICATION SHALL BE THE WORD "NATURAL GAS" IN BLACK LETTERS AT 5 FT INTERVALS USING PLASTIC PIPE MARKERS OR STENCILED PAINTED LETTERS.
 - ALL GAS PIPE SHALL COMPLY WITH IFGC. BRANCH LINES SHALL TAP OFF TOP OF GAS MAINS AND INSTALL SHUT-OFF VALVE ON BRANCH LINE.
 - MAINTAIN MINIMUM OF 10'-0" CLEAR BETWEEN EXHAUST AND INTAKE VENTS WITH MECHANICAL EQUIPMENT AND OTHER ROOF OPENINGS.

- ### KEYED NOTES
- COORDINATE INSTALLATION OF PLUMBING VENTS WITH ROOFING CONTRACTOR. INSTALL VENT A MINIMUM 10'-0" FROM ANY OPENINGS, EQUIPMENT, INTAKES OR EXHAUST VENTS.
 - COORDINATE INSTALLATION OF ROOF DRAIN WITH ROOFING CONTRACTOR.
 - COORDINATE INSTALLATION OF 2" GAS WATER HEATER CONCENTRIC VENT WITH ROOFING CONTRACTOR AND PER MANUFACTURER'S RECOMMENDATIONS. INSTALL VENT A MINIMUM 10'-0" FROM ANY OPENINGS, EQUIPMENT, INTAKES, EXHAUST VENTS AND ROOF EDGE.
 - ROUTE NATURAL GAS LINE (2 PSI) ON ROOF. PROVIDE MIRO INDUSTRIES MODEL 3-RAH-8 ROOF TOP SUPPORTS OR APPROVED EQUAL. INSTALL AT MAXIMUM OF 10'-0" APART (CENTER TO CENTER) ON ALL 1 1/4" NATURAL GAS PIPING OR LARGER. INSTALL AT 8'-0" APART ON 1" OR 3/4" NATURAL GAS PIPING. INSTALL AT 6'-0" APART ON 1/2" NATURAL GAS PIPING. REFER TO GENERAL NOTES FOR PAINTING GAS LINE. SEE DETAIL 9/P501 FOR PIPE SUPPORT DETAIL.
 - COORDINATE INSTALLATION OF FREEZELESS ROOF HYDRANT (FRH) WITH STRUCTURAL AND ROOFING CONTRACTOR.

AGP

the Abila Griffin Partnership L.L.C.

201 N. BROADWAY
SUITE 210
MOORE, OK. 73160
405.735.3477
AGP@theAGP.net
www.theAGP.net

KFC ENGINEERING
STRUCTURAL
SALAS O'BRIEN
MECHANICAL / ELECTRICAL



KPP
drawn by
AL
checked by
MARCH 2022
date
09/06/22 CB-1
revisions

MOORE PUBLIC SCHOOLS
BOARD OF EDUCATION
MOORE, OKLAHOMA



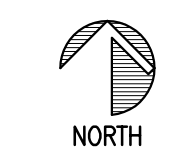
CLASSROOM ADDITION
MOOREWEST
JUNIOR HIGH SCHOOL

sheet no:

P201

1 PLUMBING PLAN - ROOF

1/8" = 1'-0"



SALAS O'BRIEN
[respect a difference]
2600 Van Buren St., Suite 2635
Norman, Oklahoma 73072
P: 405.364.9926 | CA#:7058 Expiration Date: 6/30/2023
Salas O'Brien Project No.: 2021-02932-00

OWNERSHIP USE OF DOCUMENTS:
AGP EXPRESSLY RESERVES ITS
COPYRIGHT AND OTHER PROPERTY
RIGHTS OF ALL PLANS AND DRAWINGS
DESIGNED AND/OR PRODUCED. PLANS
AND DRAWINGS ARE NOT TO BE
REPRODUCED IN ANY FORM OR MANNER
WITHOUT THE EXPRESSED WRITTEN
CONSENT OF AGP.