

ABBREVIATIONS

ABV	ABOVE	HDWD	HARDWOOD
ACQST.	ACQUSTICAL	HDMR	HARDWARE
ADJ.	ADJUSTABLE	HORLZ.	HORIZONTAL
ANCH.	ANCHOR	HT	HEIGHT
APPROX.	APPROXIMATE	INSUL.	INSULATION
BD.	BOARD	JST.	JOIST
BLG.	BLOCKING	JT.	JOINT
BT.	BOTTOM	L.V.	LAVATORY
CL.G.	CENTERLINE	MAT.	MAT
CONC.	CONCRETE	MAX.	MAXIMUM
CMU	CONCRETE MASONRY UNIT	MECH.	MECHANICAL
COLN.	COLUMN	MFG.	MANUFACTURING
CONT.	CONTINUOUS	MFR.	MANUFACTURER
D.F.	DRINKING FOUNTAIN	MIS.	MISCELLANEOUS
DM.	DIMENSION	MISC.	MISCELLANEOUS
DR.	DOOR	N.I.C.	NOT IN CONTRACT
DWG.	DRAWING	N.O./#	NUMBER NOT TO SCALE
DWL.	DOWEL	N.T.S.	NOT TO SCALE
EACH	EACH	O.C.	ON CENTER
ELECT.	ELECTRICAL	OPN.	OPENING
ELEV.	ELEVATION	OPP.	OPPOSITE
EQ.	EQUAL	P.P.	POWER POLE
E.I.	EXPANSION JOINT	PREFN.	PREFINISHED
E.W.	EACH WAY	P.V. / PLY WD.	PAPER TOWEL
EXP.	EXPANSION	REDD.	REFER
EXT.	EXISTING	RM.	ROOM
FD.	FLOOR DRAIN	S.B.	SCHEDULE BLOCK
FE.	FIRE EXTINGUISHER	SCHD.	SCHEDULE
FEC.	FIRE EXTINGUISHER CABINET	STD.	STANDARD
FEL.	FINISH FLOOR LINE	STL.	STEEL
FIN.	FINISH	S.U.	SKY
FRMG.	FRAMING	T.C.	TOP OF CURB
GA.	GAUGE	T.P.H.	TYPICAL
GB.	GRAB BAR	TTR.	TOILET PAPER HOLDER
GALV.	GALVANIZED	UNO.	UNLESS NOTED OTHERWISE
GYP. BD.	GYP-SUM BOARD	VTR.	VENT THROUGH ROOF
H.C.	HANDICAP	W.C.	WATERCLOSET
		WD.	WOOD
		WVF.	WEIDED WIRE FABRIC

MATERIALS LEGEND

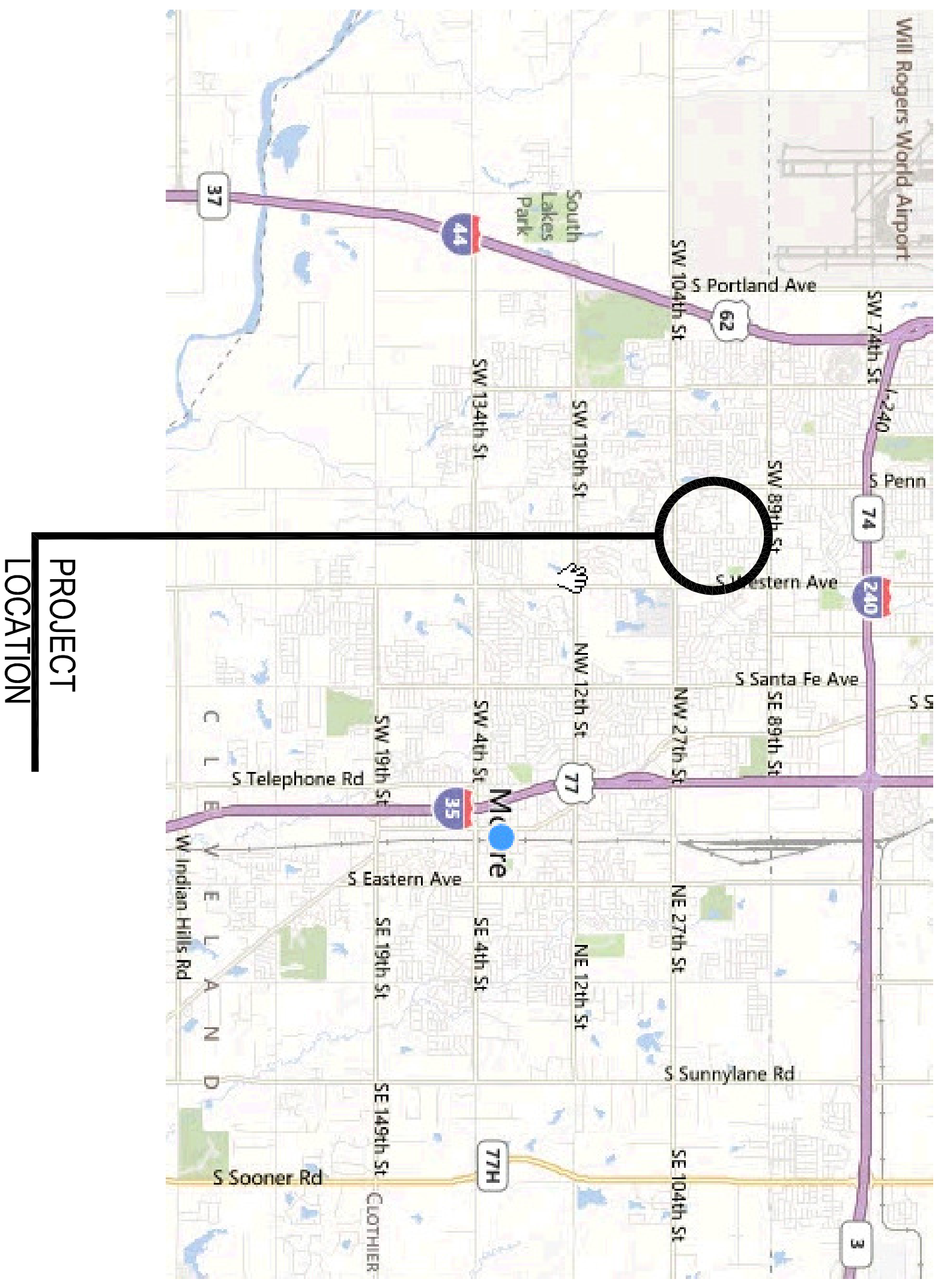
	MASONRY VENEER
	C.M.U.
	CONCRETE
	FRAME PARTITION, METAL STUDS
	GYP-SUM BOARD
	PARTICLE BOARD
	RIGID INSULATION
	WOOD BLOCKING / FRAMING, CONTINUOUS
	WOOD BLOCKING, DISCONTINUOUS
	FINISH WOOD
	SMALL SCALE STRUCTURAL STEEL / MISCELLANEOUS METAL
	LARGE SCALE STRUCTURAL STEEL
	BATT INSULATION
	ACOUSTICAL CEILING TILE
	EARTH FILL

SYMBOLS LEGEND

	EXISTING SPOT ELEVATION
	FINISH SPOT ELEVATION
	EXISTING GRADE CONTOUR
	FINISH GRADE CONTOUR
	EXISTING TREE TO BE PROTECTED
	EXISTING TREE TO BE REMOVED
	PROJECT LIMITS
	CHAINLINK FENCE
	BARBED WIRE FENCE
	CONCRETE PAVING
	ASPHALT PAVING
	CONCRETE SIDEWALK
	EXISTING PAVING/SIDEWALK TO REMAIN
	EXISTING PAVING TO BE REMOVED
	NEW BUILDING
	EXISTING BUILDING - NO WORK
	ROOM NUMBER
	ROOM NUMBER, LARGE SCALE PLAN REFERENCE
	ROOM NUMBER, INTERIOR ELEVATION REFERENCE
	WALL SECTION/DETAIL CUT MARK
	LARGE SCALE DETAIL MARK
	STRUCTURAL GRID COORDINATES
	BUILDING SECTION CUT MARK
	DOOR NUMBER
	WINDOW MARK
	FRAME MARK
	GLAZING MATERIAL MARK
	EQUIPMENT MARK
	EXTERIOR ELEVATION MARK
	TEST HOLE
	BENCH MARK/BUILDING ELEVATION (SECTION)

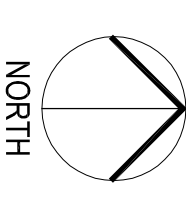
GENERAL NOTES:

- ALL REQUIRED HANDICAP ACCESSIBLE ITEMS TO COMPLY WITH AMERICANS WITH DISABILITIES ACT AND ARCHITECTURAL BARRIERS ACT ACCESSIBILITY GUIDELINES.
- THE CONTRACTOR SHALL NOT USE ANY LEAD-BASED PAINT OR ASBESTOS CONTAINING MATERIAL ON THIS PROJECT
- THESE CONTRACT DOCUMENTS INCLUDING BUT NOT LIMITED TO THE DRAWINGS, PROJECT MANUAL AND ANY SUBSEQUENT ADDENDA ARE ISSUED AS A "WHOLE" AND SHALL BE BID AS SUCH. EACH DISCIPLINE / SUBCONTRACTOR SHALL REVIEW THE ENTIRE SET OF CONTRACT DOCUMENTS AND INCLUDE APPLICABLE WORK IN THEIR BID REGARDLESS OF LOCATION WITHIN THE CONTRACT DOCUMENTS. REVIEWING ONLY A PORTION OF THE CONTRACT DOCUMENTS SHALL NOT RELIEVE THE CONTRACTOR OR SUBCONTRACTOR OF THE REQUIREMENT TO PERFORM THE WORK OF THEIR RESPECTIVE DISCIPLINES.
- LOCATIONS OF EXISTING BUILDINGS, SITE FEATURES, & UNDERGROUND UTILITIES HAVE BEEN OBTAINED FROM EXISTING AVAILABLE SOURCES. THE CONTRACTOR IS TO FIELD VERIFY EXISTING LOCATIONS PRIOR TO STARTING CONSTRUCTION AND NOTIFY THE ARCHITECT IMMEDIATELY IF ANY EXISTING BUILDING OR SITE FEATURE CONFLICTS WITH THE NEW CONSTRUCTION.
- THE CONTRACTOR SHALL VERIFY ALL EXISTING SITE UTILITIES AND PROTECT DURING CONSTRUCTION. COORDINATE NEW UTILITY REQUIREMENTS WITH APPLICABLE UTILITY COMPANIES (WATER, GAS, ELECTRICITY, SANITARY, SEWER, TELEPHONE, CABLE, SITE DRAINAGE AND OTHERS AS REQUIRED). COMPLY WITH ALL APPLICABLE REGULATIONS. INCLUDE ALL CONNECTION FEES AND OTHER CHARGES IN BID.
- REFER TO MECHANICAL AND ELECTRICAL DRAWINGS FOR UTILITY INFORMATION.
- REFER TO MECHANICAL AND ELECTRICAL DRAWINGS FOR ADDITIONAL REQUIREMENTS AND CONCRETE TO BE PROVIDED BY CONTRACTOR.
- GENERAL CONTRACTOR TO VERIFY LOCATIONS OF EASEMENTS, ENCUMBRANCES AND SET BACKS PRIOR TO STARTING CONSTRUCTION
- CONFLICTS BETWEEN DRAWINGS AND SPECIFICATIONS SHALL BE BROUGHT TO ARCHITECTS ATTENTION. FAILURE TO BID ITEMS NOTED ON DRAWINGS AND OMITTED FROM SPECIFICATIONS DOES NOT REMOVE RESPONSIBILITY TO PROVIDE AND INSTALL SUCH.
- GENERAL CONTRACTOR SHALL PAY "FEE IN LIEU OF DETENTION POND" AS REQUIRED BY THE CITY OF OKLAHOMA CITY & INCLUDE ALL APPLICABLE FEES / PAYMENTS IN BID.



PROJECT LOCATION

KINGSGATE ELEMENTARY SCHOOL
1400 KINGSGATEE ROAD
OKLAHOMA CITY, OKLAHOMA 73159



VICINITY MAP

Legal Description:
S-10-3W-6.3 AC PRT SW/4 BEG S488.92' W431.80' NE/C SW/4 SW610.10' NW320.62' N360' E345' N45' NE180'

CG
designed by
MA
checked by
MAGCJ 2024
0818
revisions

MOORE PUBLIC SCHOOLS
BOARD OF EDUCATION
MOORE, OKLAHOMA

MOORE Public Schools
LEARNING FOR LIFE

HVAC REPLACEMENT
KINGSGATE
ELEMENTARY SCHOOL

G100

OWNERSHIP USE OF DOCUMENTS:
AGP EXPRESSLY RESERVES ITS
COPYRIGHT AND OTHER PROPERTY
RIGHTS OF ALL PLANS AND DRAWINGS
DESIGNED AND/OR PRODUCED BY
AGP. ANY REPRODUCTION OR
REPRODUCTION IN ANY FORM OR MANNER
WITHOUT THE EXPRESSED WRITTEN
CONSENT OF AGP.