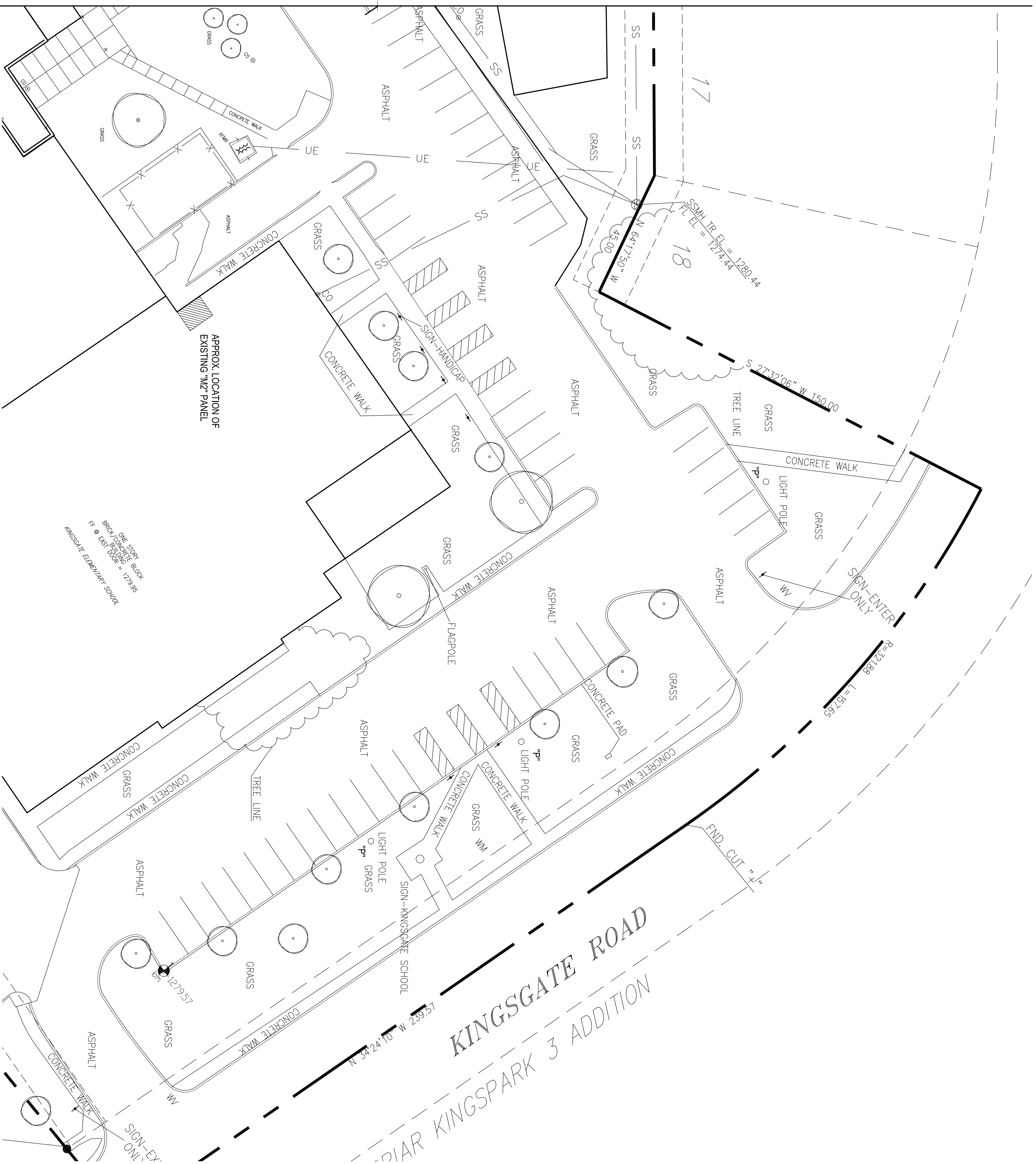
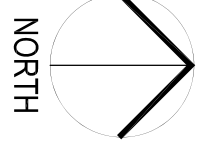




OS
drawn by
MA
checked by
JANUARY 2025
date
revisions



NEW SITE LIGHTING PLAN
1" = 20'-0"



GENERAL NOTES:

1. CONTACT UTILITY COMPANY TO REMOVE EXISTING POLE AND LIGHT FIXTURE
2. PROVIDE NEW LIGHT POLE BASE IN SAME LOCATION (3 TOTAL) RE: 20100.
3. FIELD VERIFY LOCATION OF NEW CONDUIT AND ROUTE TO NEAREST SUB-PANEL, COORDINATE WITH OWNER / ARCHITECT.
3. PATCH / REPAIR EXISTING ASPHALT / CONCRETE AS REQUIRED FOR INSTALLATION OF NEW CONDUIT TO NEAREST SUB-PANEL
3. PROVIDE ALL MATERIALS REQUIRED FOR INSTALLATION OF NEW POLE LIGHTING.

LIGHT FIXTURE SCHEDULE:

- *P1 LITHONIA RSX1 LED P2 40K R2 MVOLT RPA PER7 DBLXD
SINGLE HEAD LED ROADWAY FIXTURE, 72W, 9,878 LUMENS, 4000K CCT, TYPE 4 OPTIC,
WET LOCATION, 7-#IN PHOTOCONTROL, 25" ROUND TAPERED STEEL POLE, 3" CONCRETE PEDESTAL.

2 LIGHTING POLE STANDARD ELEVATION
NO SCALE

