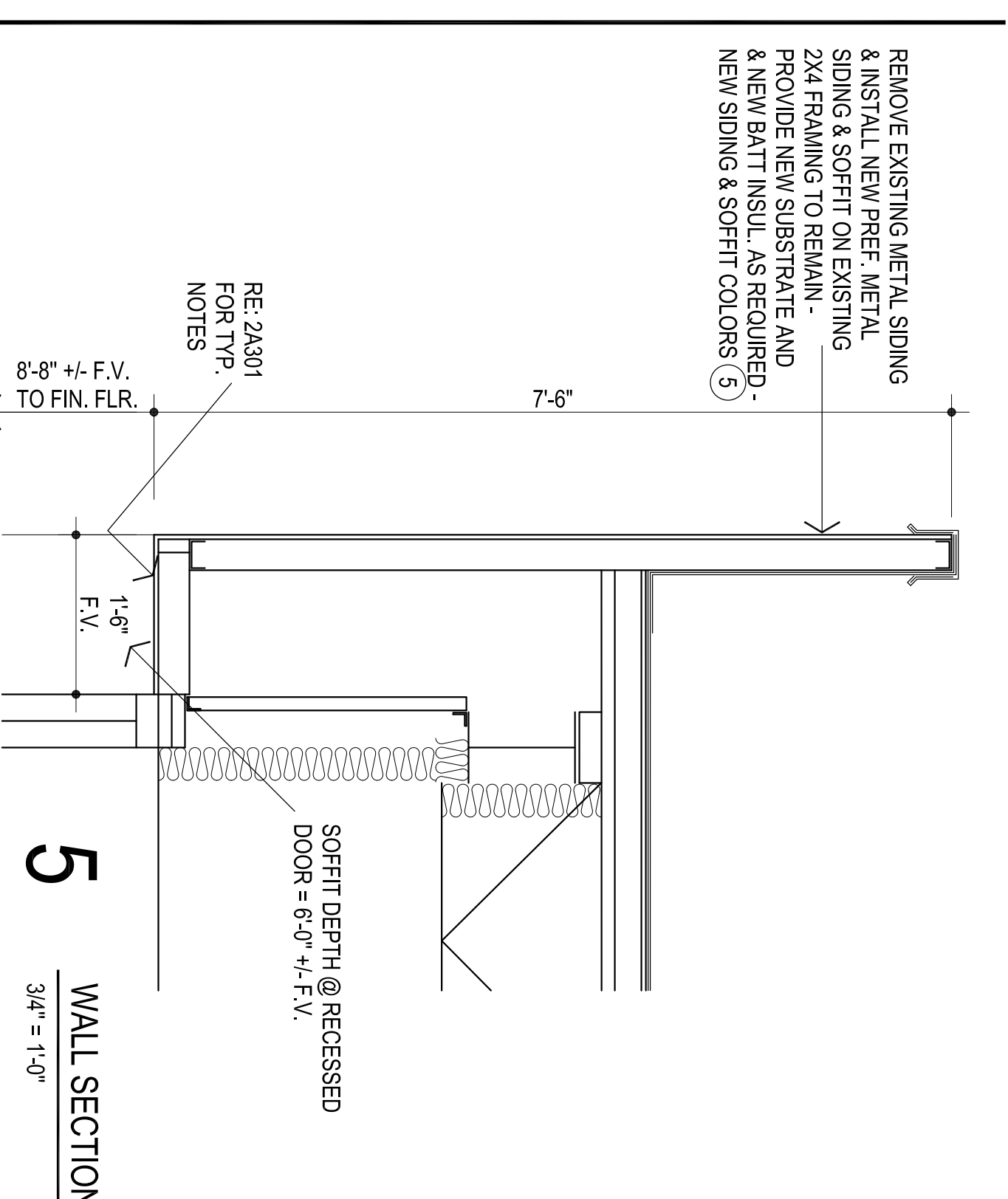
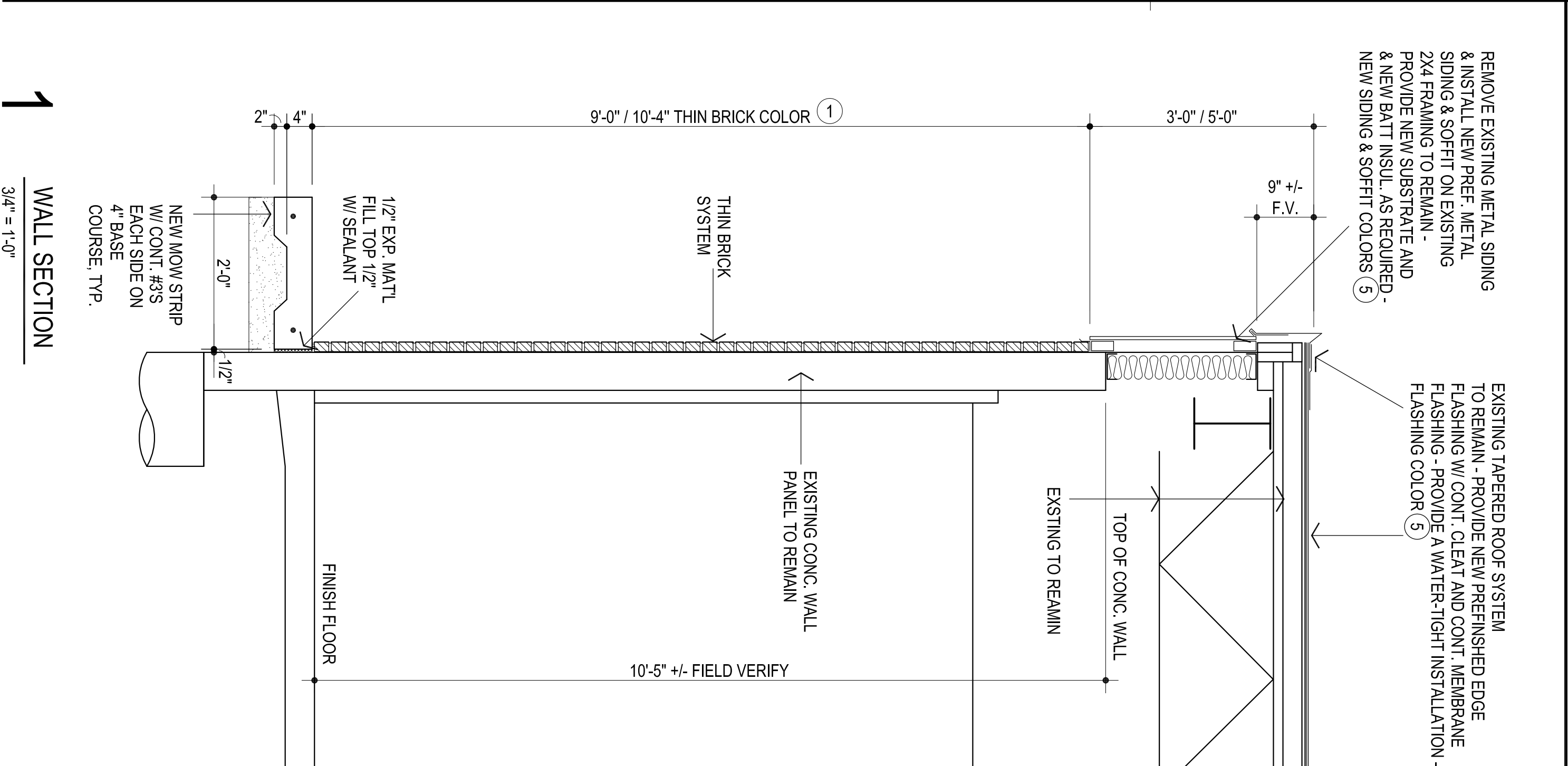


**THIN BRICK SYSTEM DESCRIPTION :**

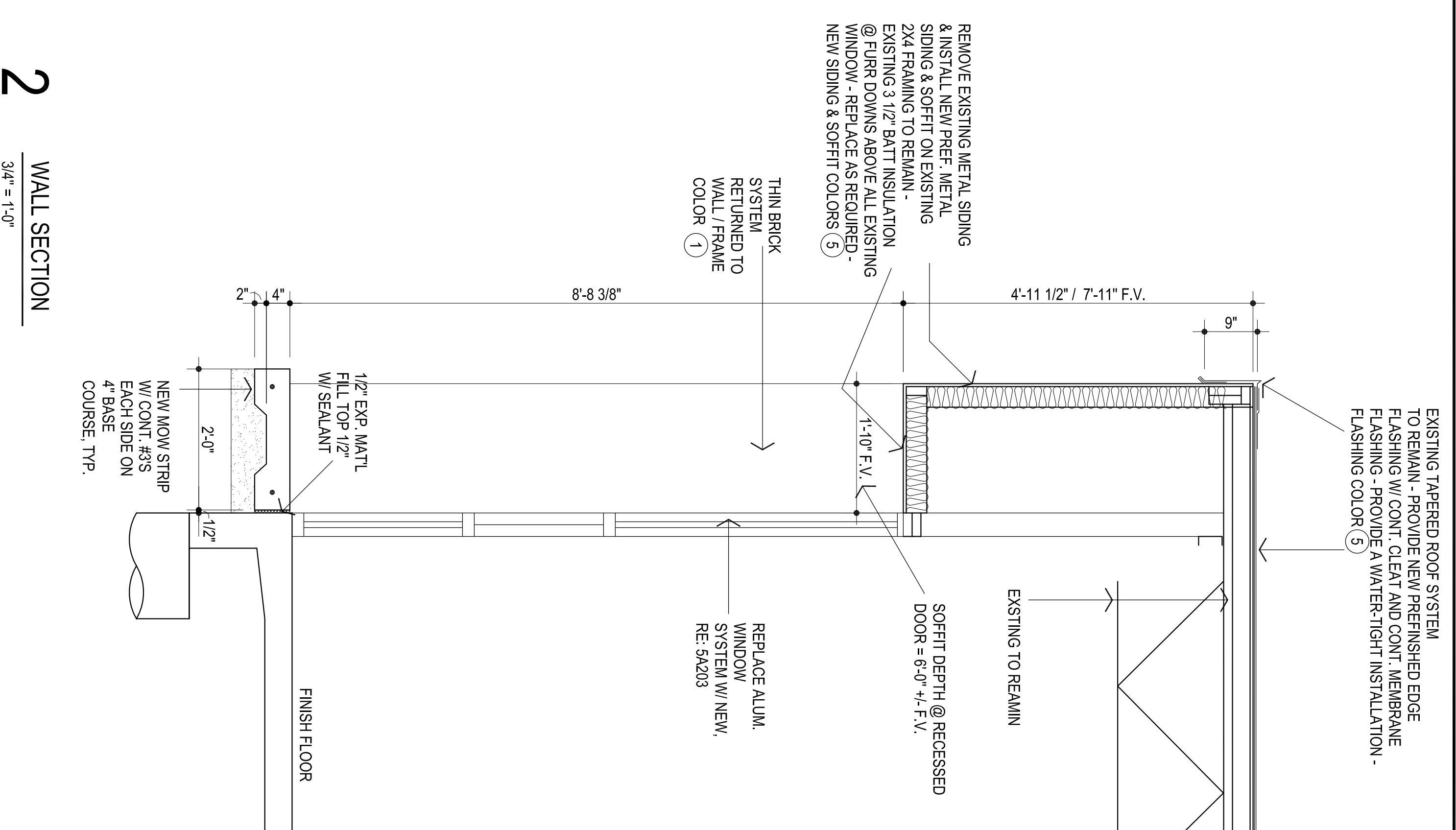
1. @ SHEETING / STUD SUBSTRATES - THIN BRICK VENEER ON MORTAR SCRATCH COAT ( 1/2" MIN. THICKNESS ) ON METAL LATH SECURED W/ 3/4" CORROSION-RESISTANT SCREWS @ 6" O.C. ON WEATHER RESISTANT BARRIER ANCHORED @ 6" O.C. MIN.
2. @ CAST-IN-PLACE CONCRETE SUBSTRATES - THIN BRICK VENEER ON BONDING COAT ON MORTAR / SCRATCH COAT W/ METAL LATH ON AIR / VAPOR BARRIER
3. PROVIDE CONT. WEEP SCREED @ BASE OF WALLS. LAP AIR / VAPOR BARRIER OVER TOP OF SCREED 1" MIN.
4. COORDINATE ALL SUBSTRATE PREPARATIONS W/ THIN BRICK VENEER MFR. & MASON. REVISE AS NECESSARY & APPROVED BY ARCHITECT.



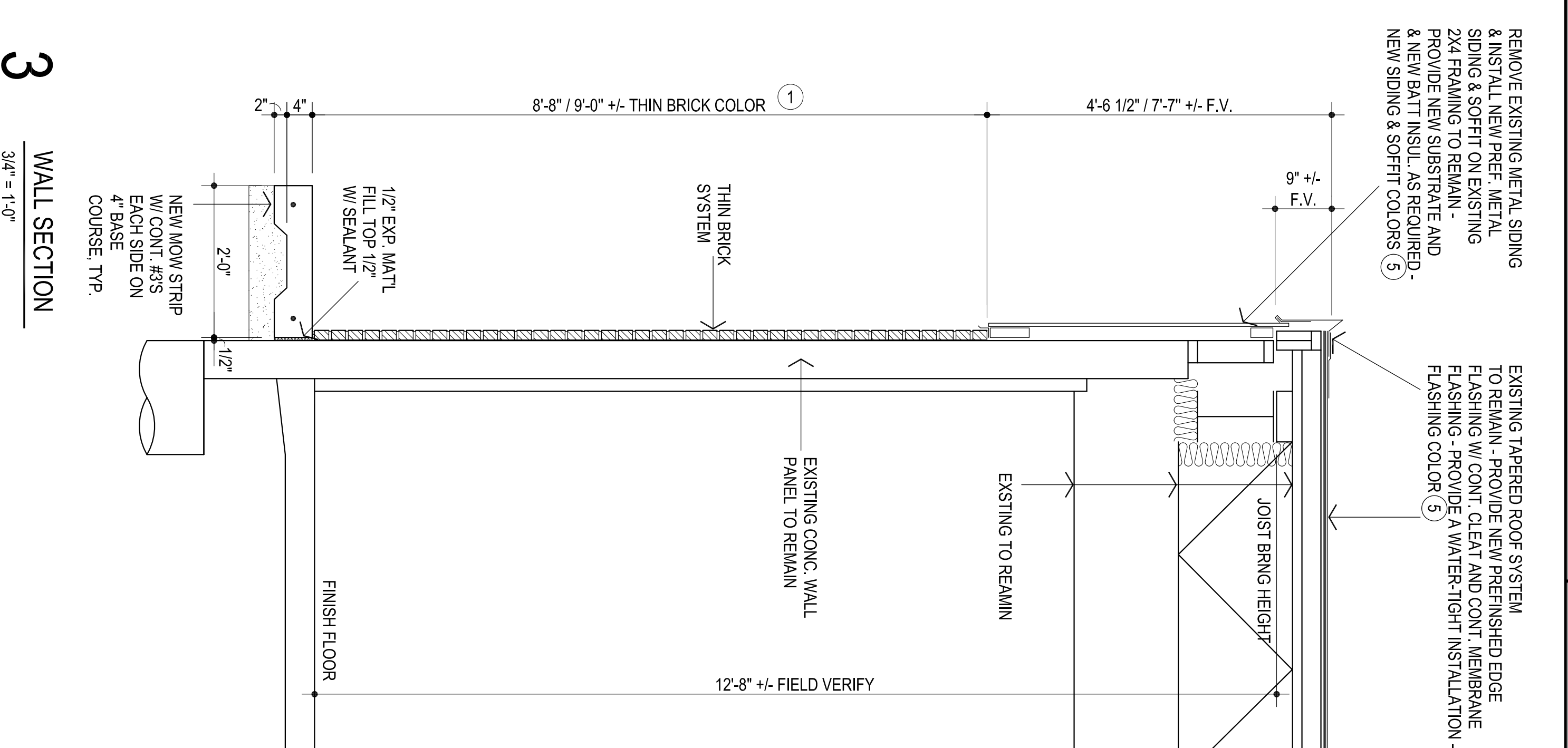
**5**  
WALL SECTION  
3/4" = 1'-0"



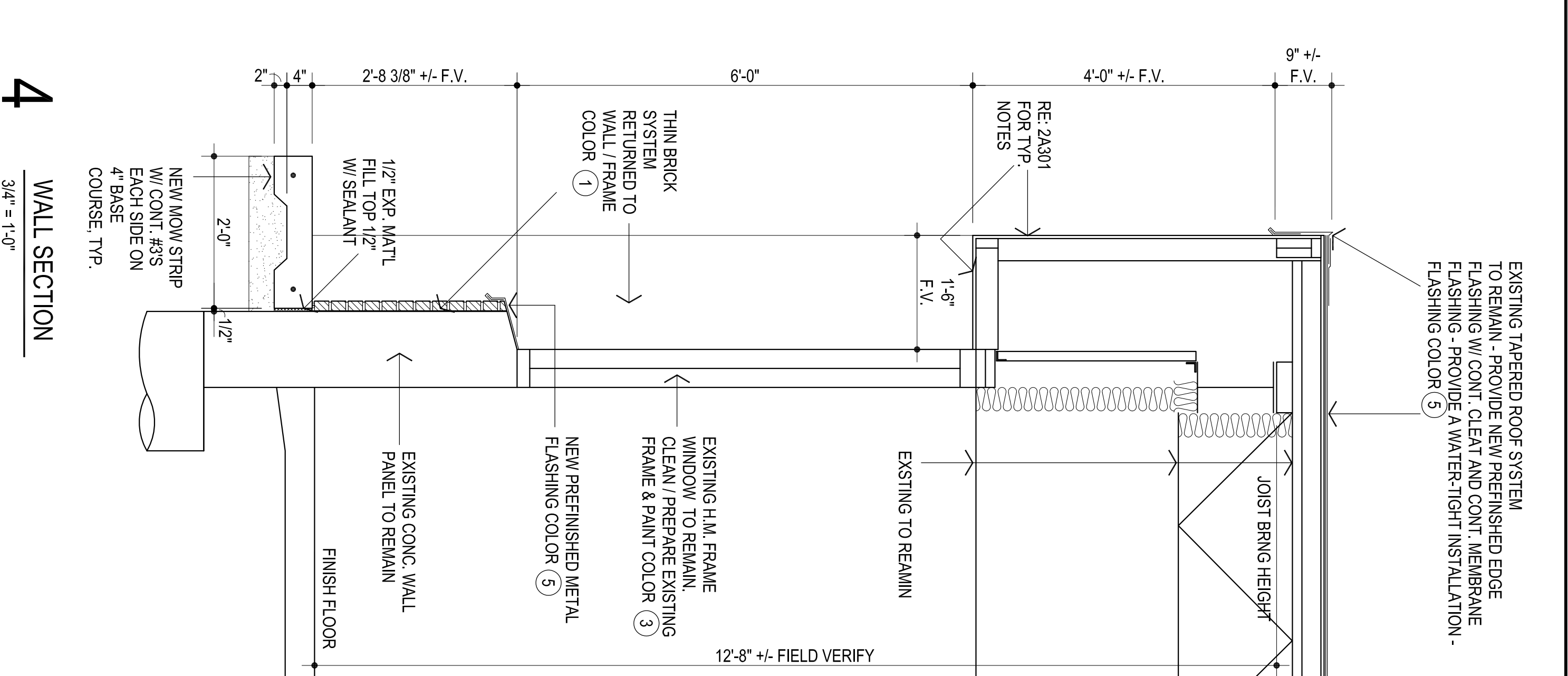
**1**  
WALL SECTION  
3/4" = 1'-0"



**2**  
WALL SECTION  
3/4" = 1'-0"



**3**  
WALL SECTION  
3/4" = 1'-0"



**4**  
WALL SECTION  
3/4" = 1'-0"



OC  
drawn by  
MA  
checked by  
JANUARY 2025  
date  
revisions



**MOORE**  
PUBLIC SCHOOLS

KINGSGATE  
ELEMENTARY SCHOOL  
EXTERIOR UPGRADES

Sheet No.:  
**A301**

OWNERSHIP USE OF DOCUMENTS:  
AGP EXPRESSLY RESERVES ITS  
COPYRIGHT AND OTHER PROPERTY  
RIGHTS OF ALL PLANS AND DRAWINGS  
DESIGNED AND/OR PRODUCED. PLANS  
AND DRAWINGS ARE NOT TO BE  
REPRODUCED IN ANY FORM OR MANNER  
WITHOUT THE EXPRESS WRITTEN  
CONSENT OF AGP.