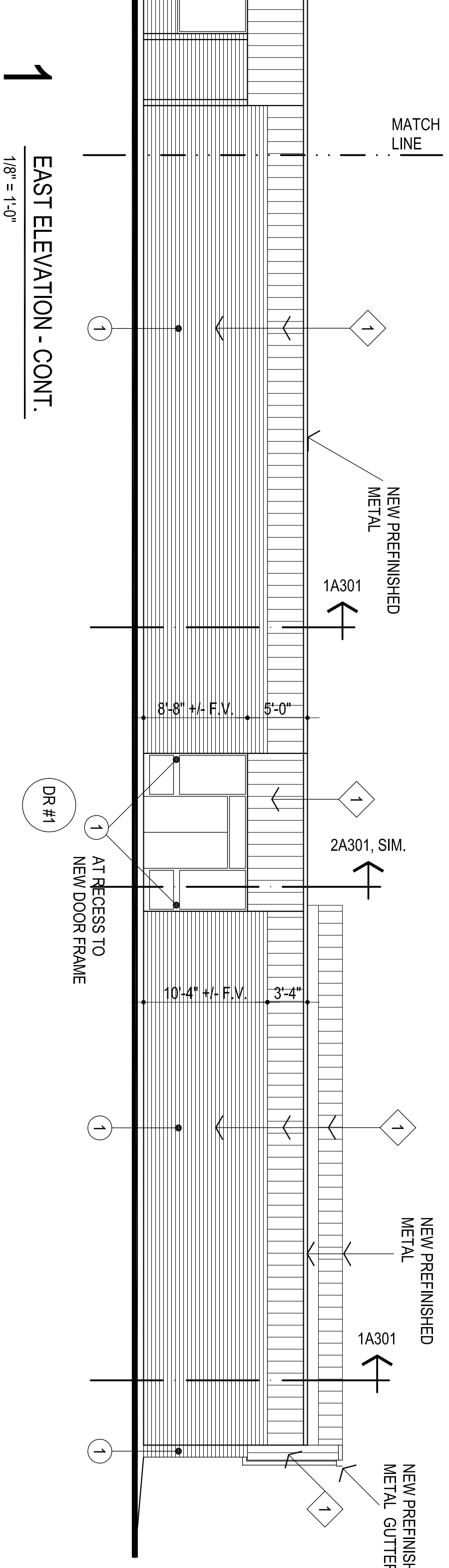
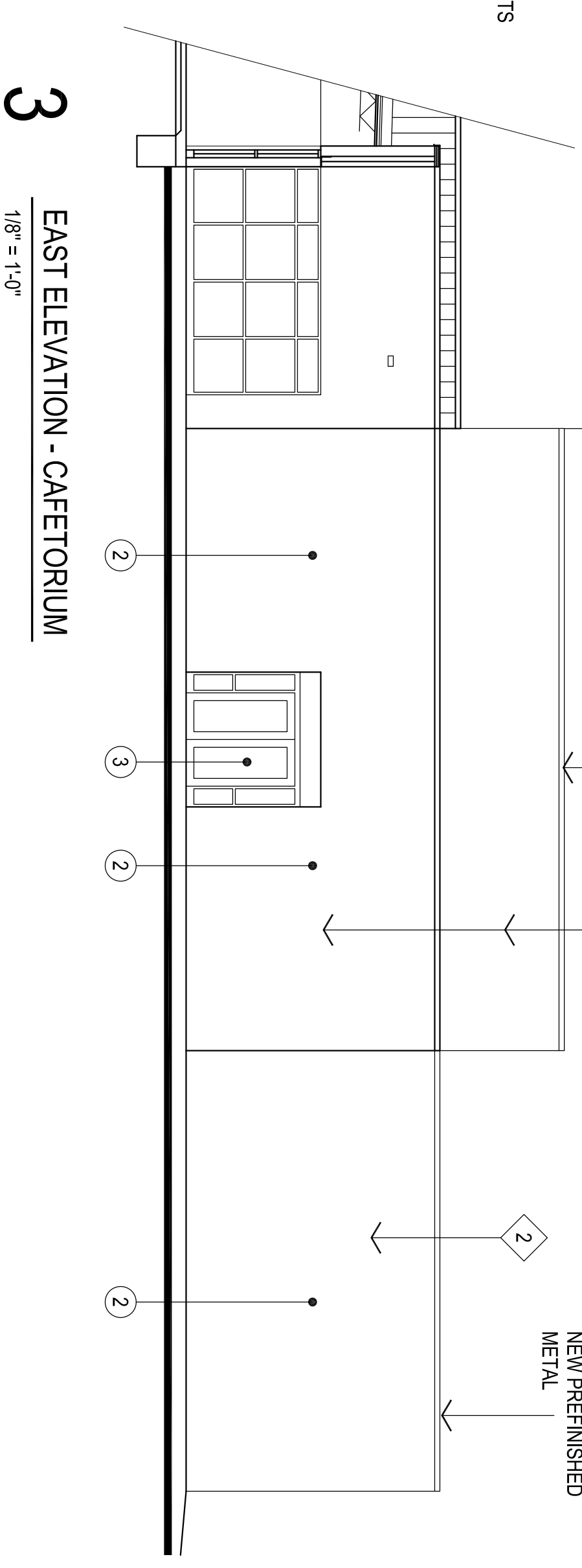


**LEGEND:**  
 CONTRACTOR TO VERIFY QUANTITIES AND LOCATIONS OF ALL WALL / SOFFIT DEVICES  
 E. ELECTRICAL DEVICE  
 F. CAMERA DEVICE  
 S. SPEAKER / HORN / STROBE  
 C. CONDUIT / CABLE THRU FASICA  
 G. GAS LINE ON WALL

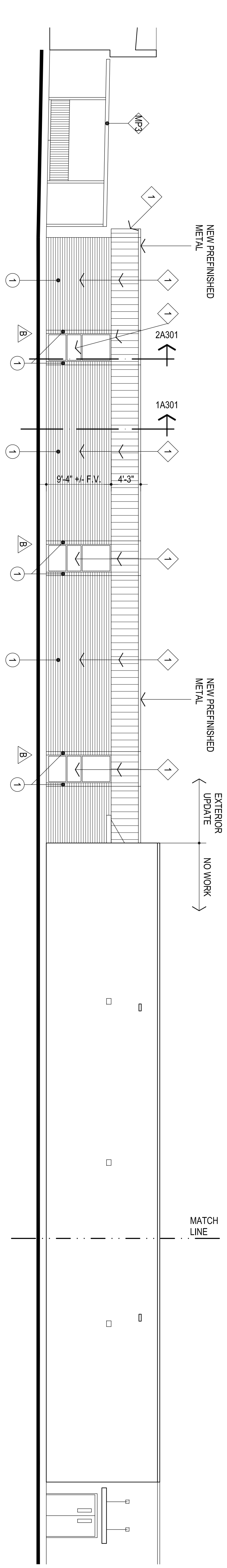
**1**  
 EAST ELEVATION  
 1/8" = 1'-0"



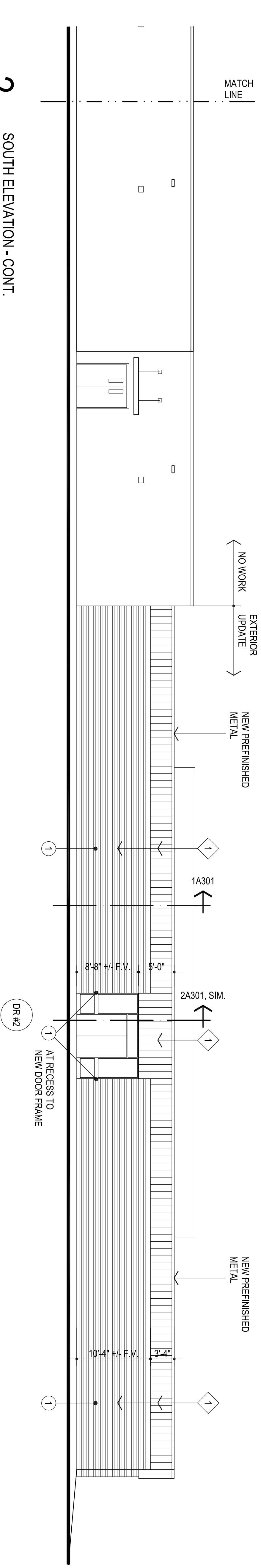
**1**  
 EAST ELEVATION - CONT.  
 1/8" = 1'-0"



**3**  
 EAST ELEVATION - CAFETERIUM  
 1/8" = 1'-0"



**2**  
 SOUTH ELEVATION  
 1/8" = 1'-0"



**2**  
 SOUTH ELEVATION - CONT.  
 1/8" = 1'-0"

**AGP**  
 the Abila Griffin  
 Partnership L.L.C.

313 S. E. 5th Street  
 MOORE, OK, 73160  
 405.735.3477  
 AGP@theAGP.net  
 www.theAGP.net



CG  
 Drawn by  
 MA  
 checked by  
 JANUARY 2025  
 date  
 revisions



**MOORE**  
 PUBLIC SCHOOLS

KINGSGATE  
 ELEMENTARY SCHOOL  
 EXTERIOR UPGRADES

Sheet No.:  
**A201**

OWNERSHIP USE OF DOCUMENTS:  
 AGP EXPRESSLY RESERVES ITS  
 COPYRIGHT AND OTHER PROPERTY  
 RIGHTS OF ALL PLANS AND DRAWINGS  
 DESIGNED AND/OR PRODUCED. PLANS  
 AND DRAWINGS ARE NOT TO BE  
 REPRODUCED IN ANY FORM OR MANNER  
 WITHOUT THE EXPRESS WRITTEN  
 CONSENT OF AGP.