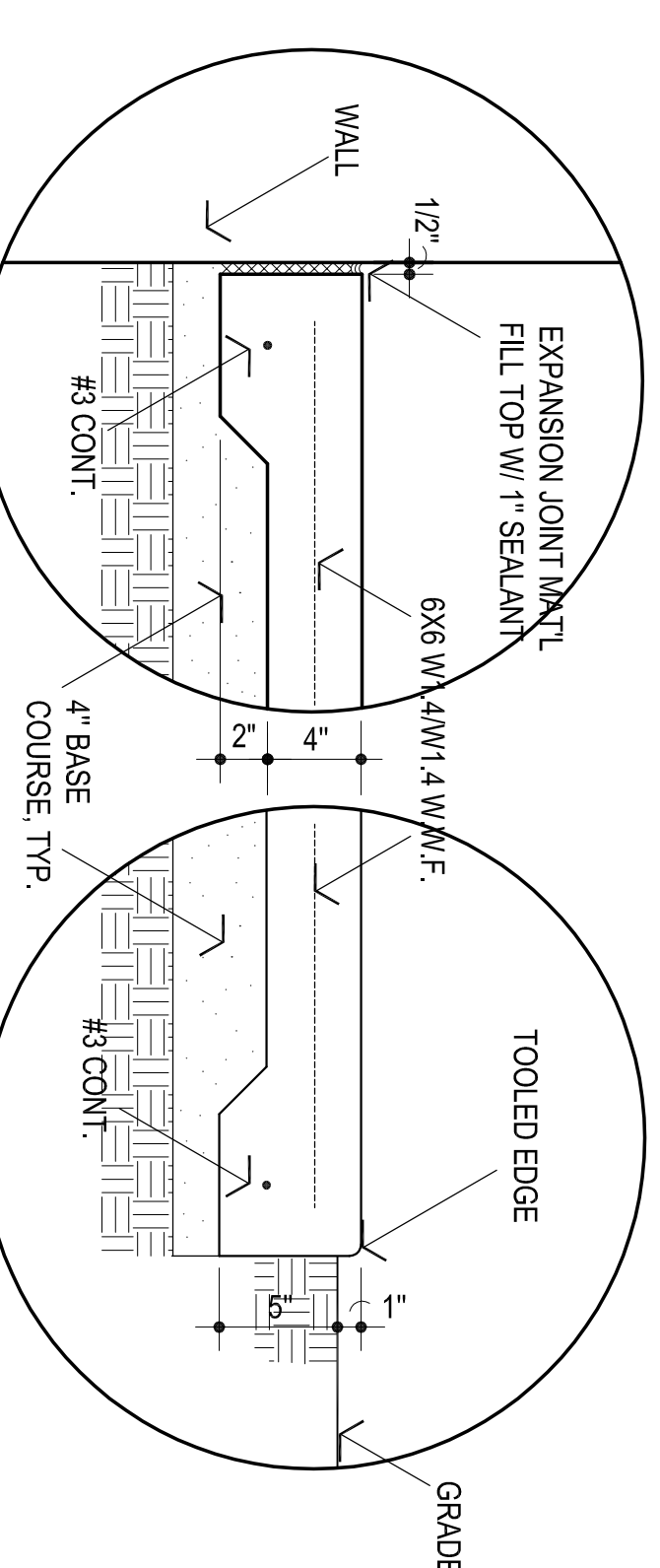
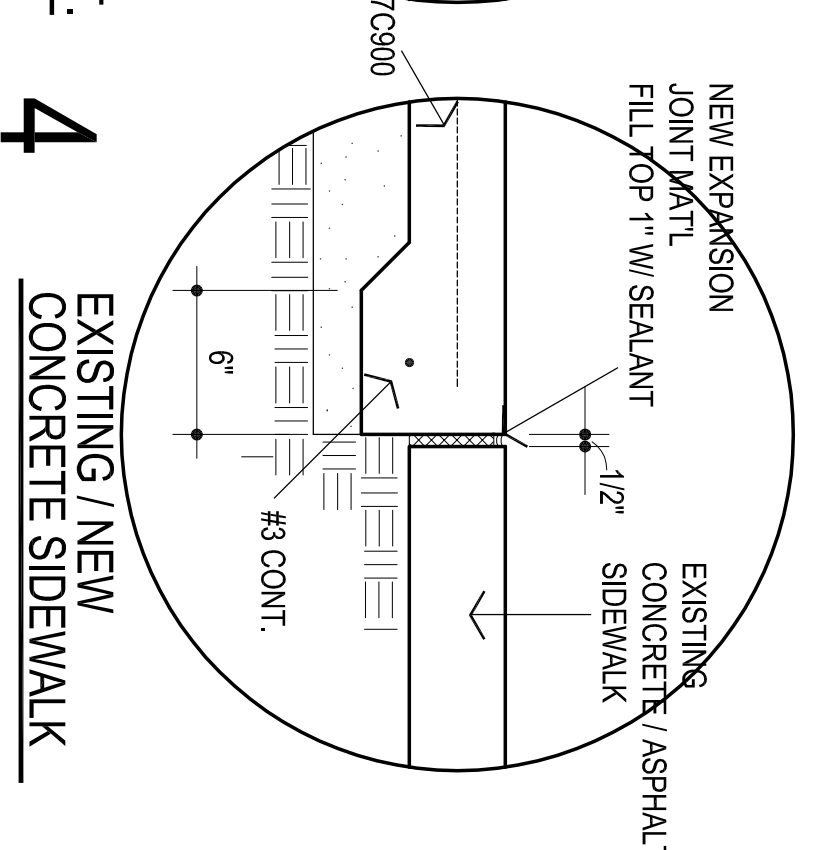
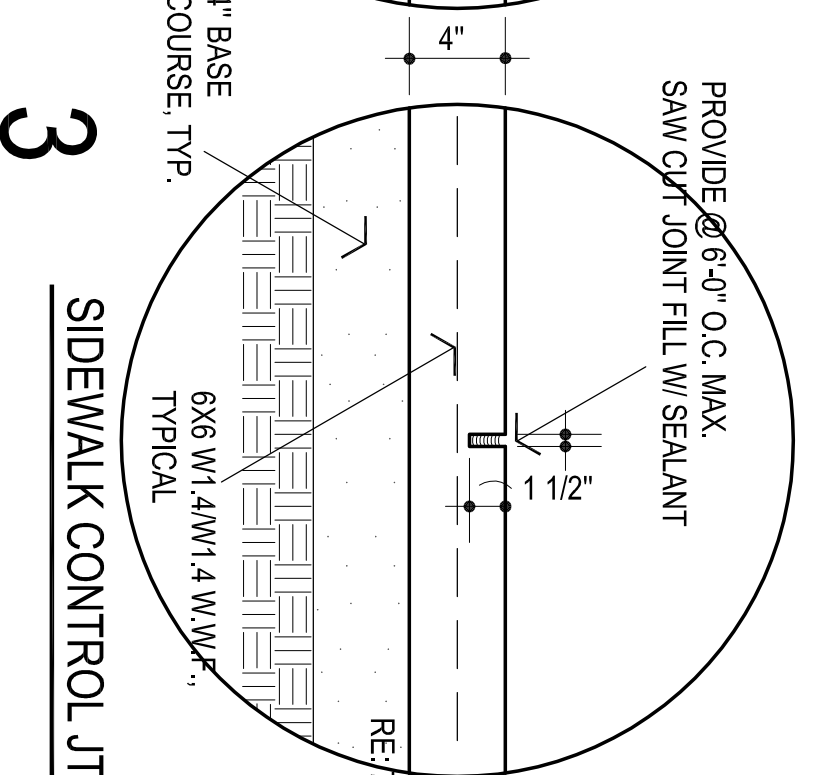
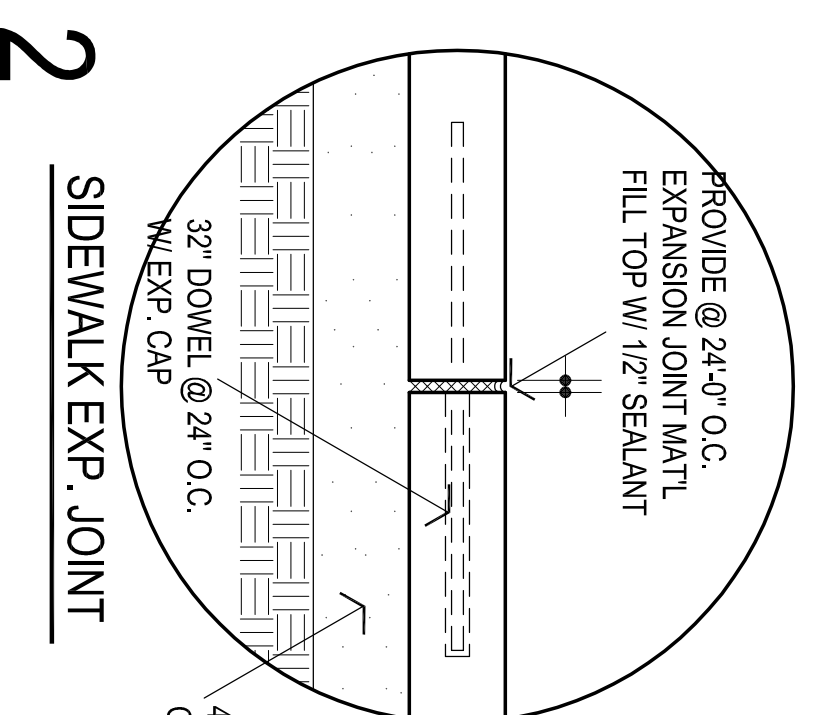
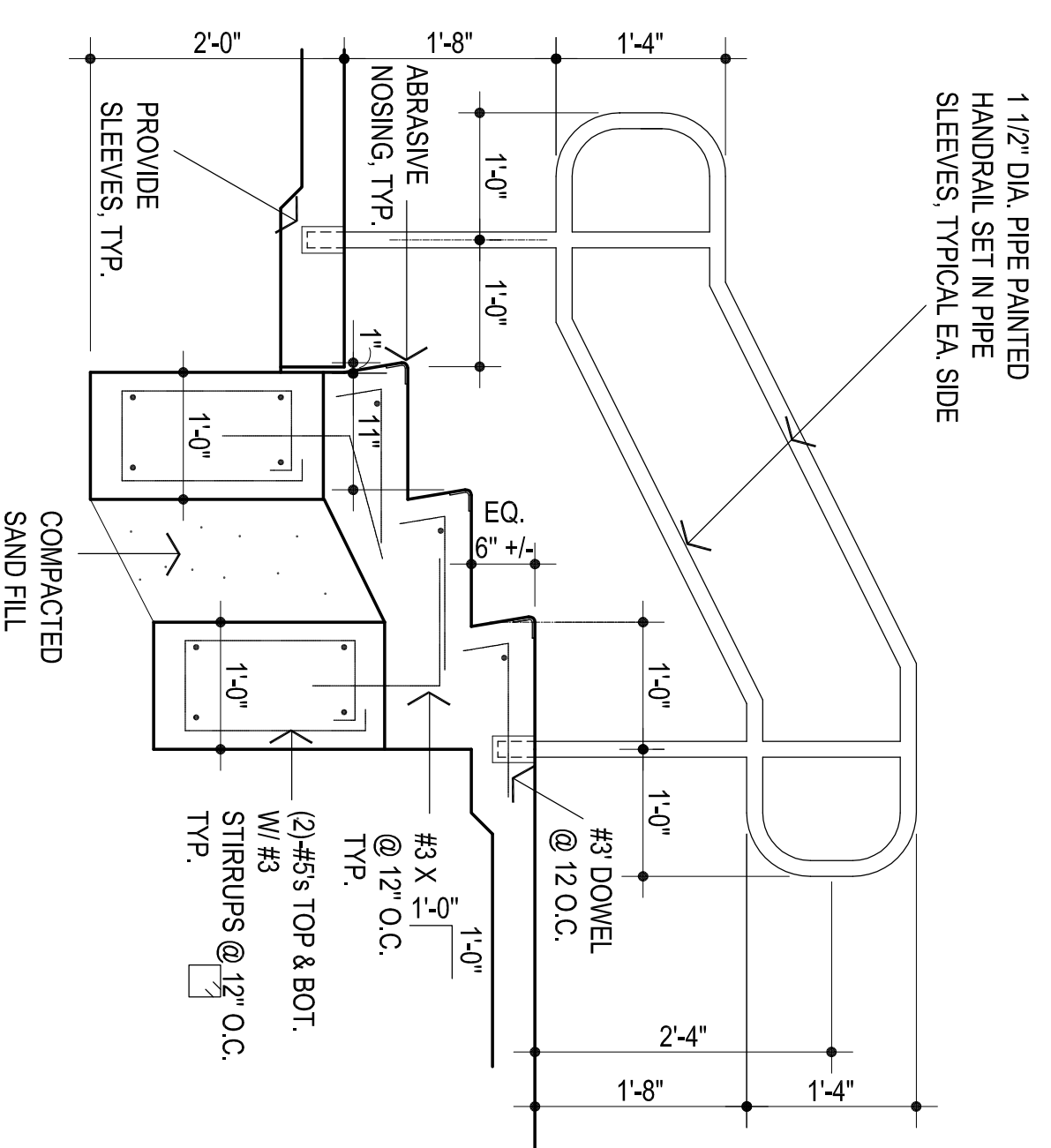


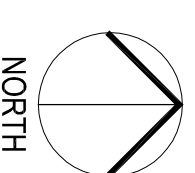
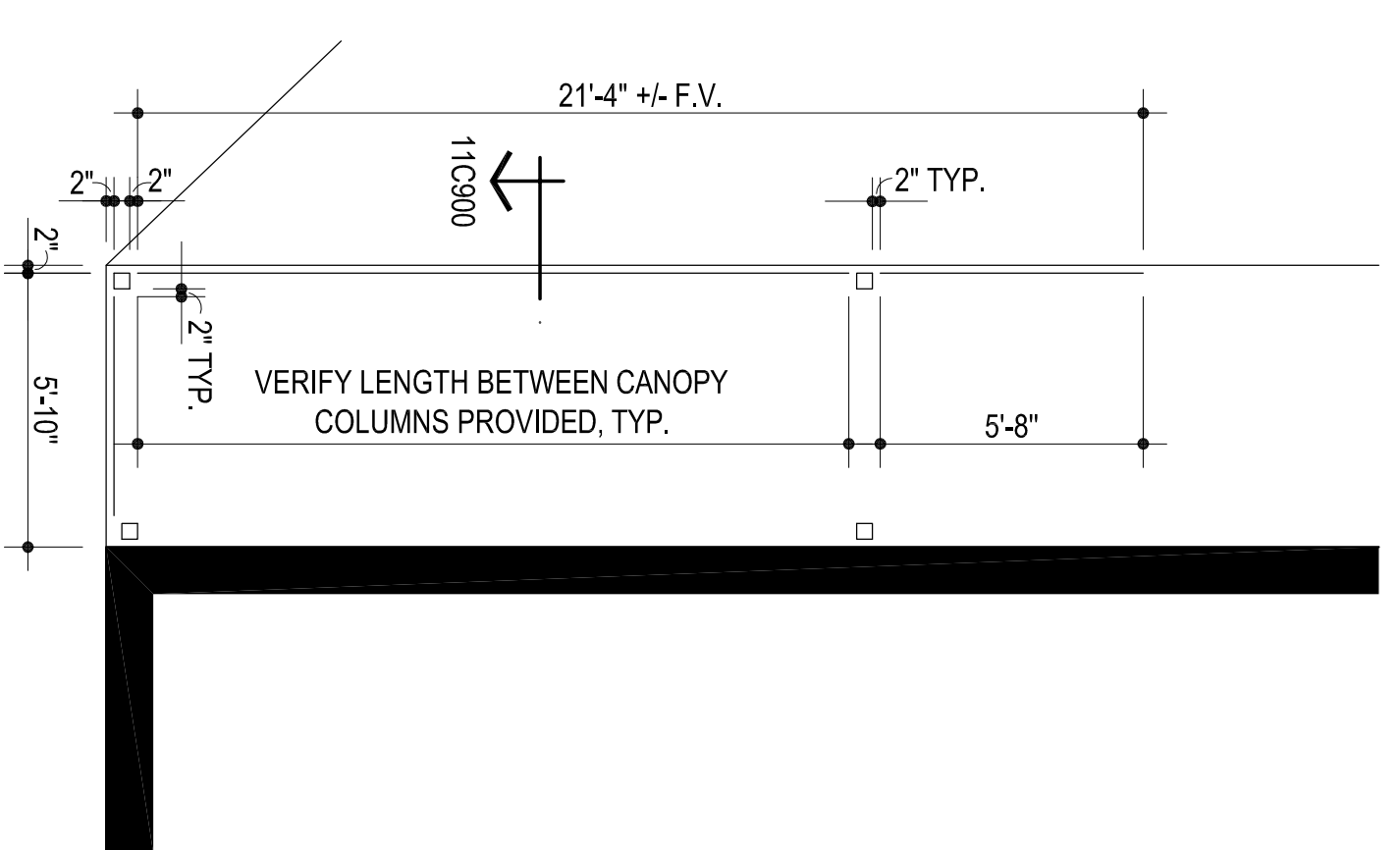
1
ENLARGED PLAN
1/4" = 1'-0"



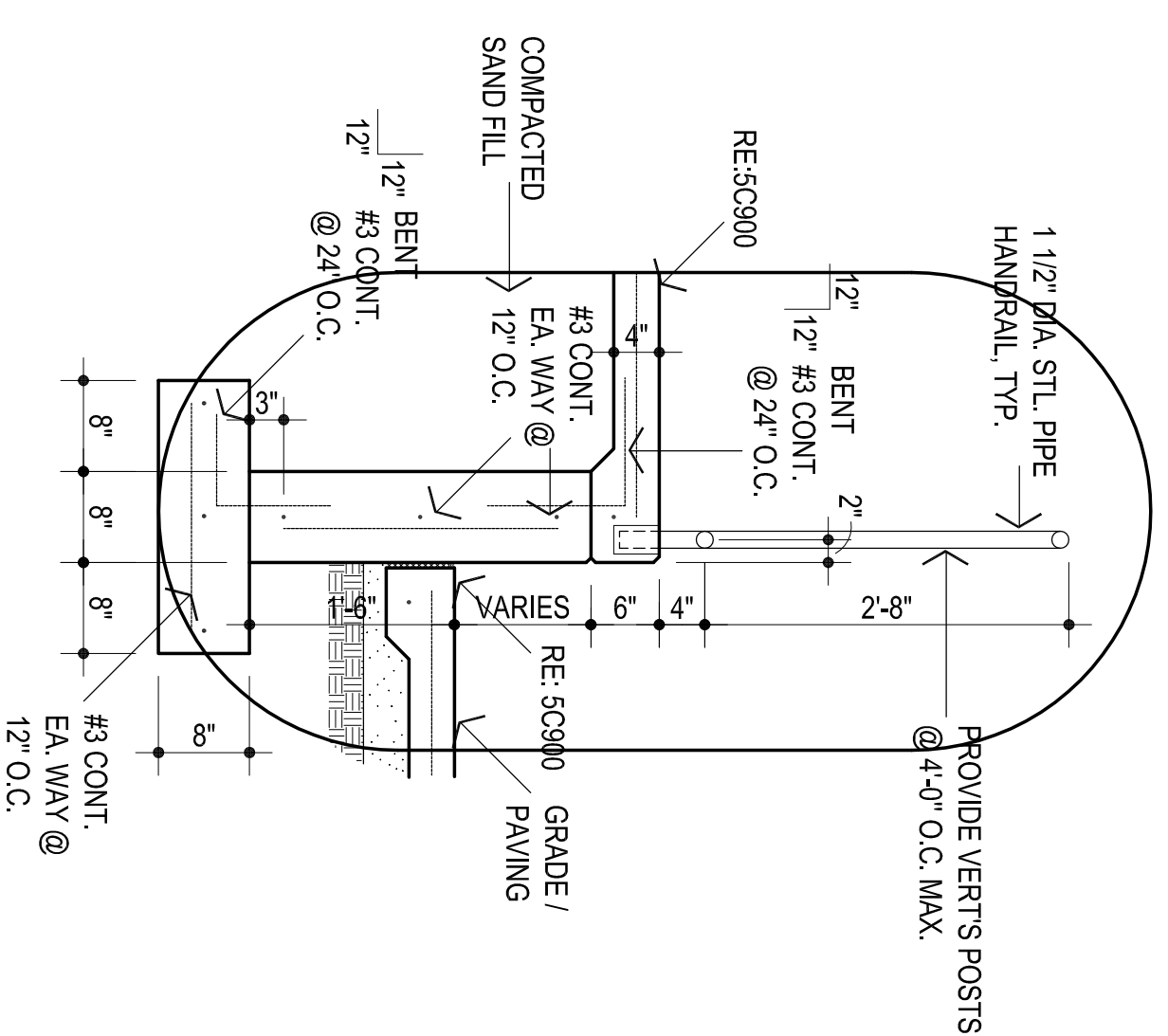
5 SIDEWALK @ VERT. SURF.
7 SIDEWALK EDGE



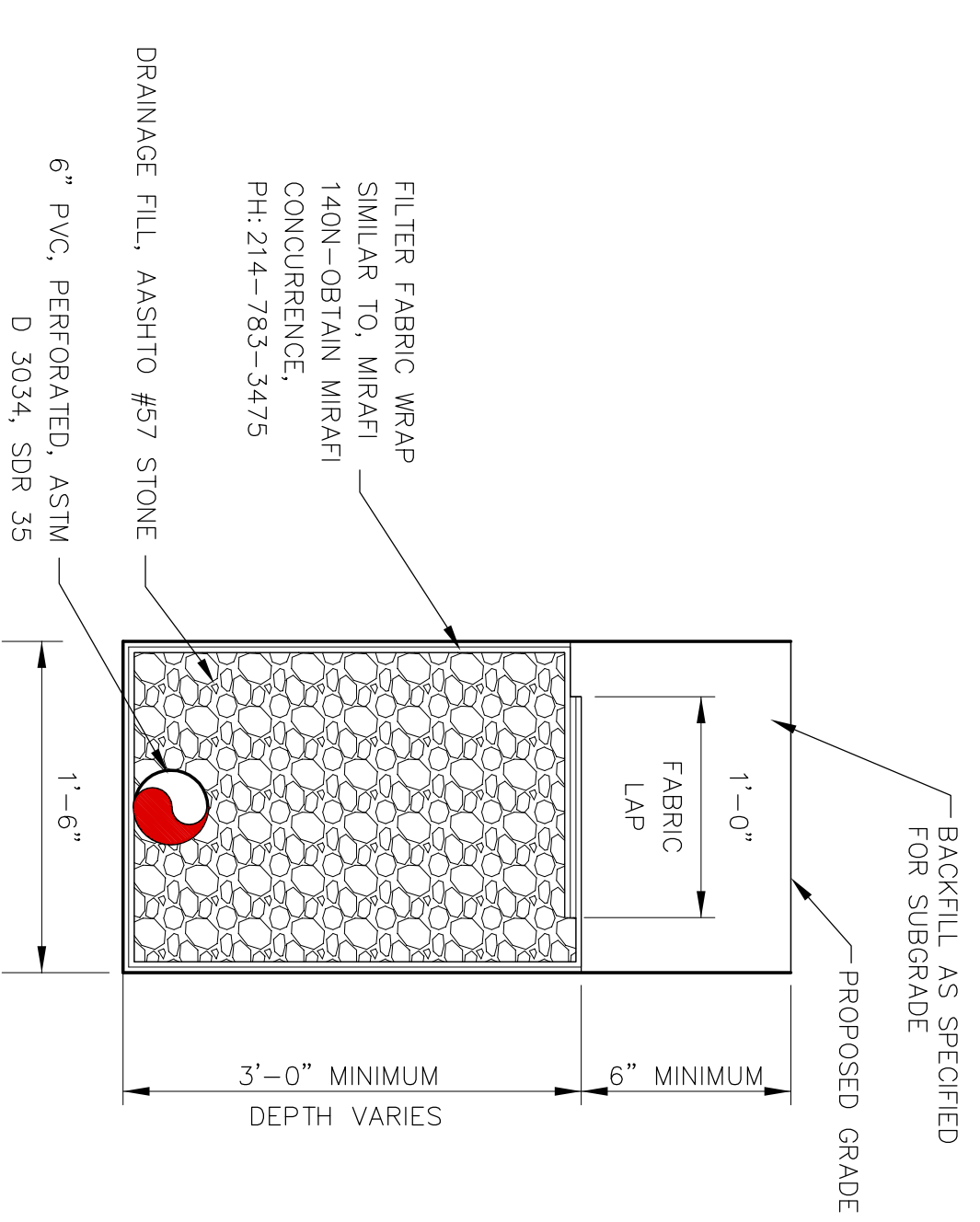
9 SECTION @ STEPS
3/4" = 1'-0"



10 ENLARGED PLAN
1/4" = 1'-0"



11 SIDEWALK EDGE
3/4" = 1'-0"



8 FRENCH DRAIN DETAIL
NOT TO SCALE

AGP
the Abia Griffin
Partnership L.L.C.

201 N. BROADWAY
SUITE 210
MOORE, OK, 73160
405.733.3477
AGP@theAGP.net
www.theAGP.net

CEDAR CREEK INC.

CHILL

KFC ENGINEERING

STRUCTURAL

SALAS O'BRIEN

MECHANICAL / ELECTRICAL

STATE OF OKLAHOMA
MICHAEL L. ABIA
ABIA
2639
OKLAHOMA
10/14/22

CG
drawn by _____
MA
checked by _____
OCTOBER 2022
DATE
revisions

MOORE PUBLIC SCHOOLS
BOARD OF EDUCATION
MOORE, OKLAHOMA

MOORE Public School
LEARNING FOR LIFE

NEW ADDITION
KELLEY ELEMENTARY
SCHOOL

Sheet no:

C900

OWNERSHIP USE OF DOCUMENTS.

AGP EXPRESSLY RESERVES ITS
RIGHTS IN ALL RIGHTS AND
DESIGNED AND/OR PRODUCED. PLANS
AND DRAWINGS ARE NOT TO BE
REPRODUCED IN ANY FORM OR MANNER
WITHOUT THE EXPRESSED WRITTEN
CONSENT OF AGP.