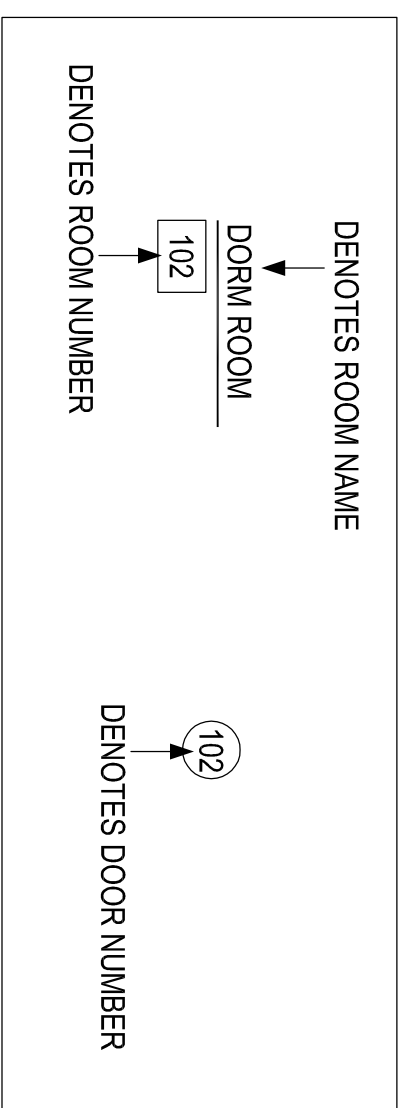


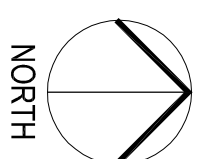
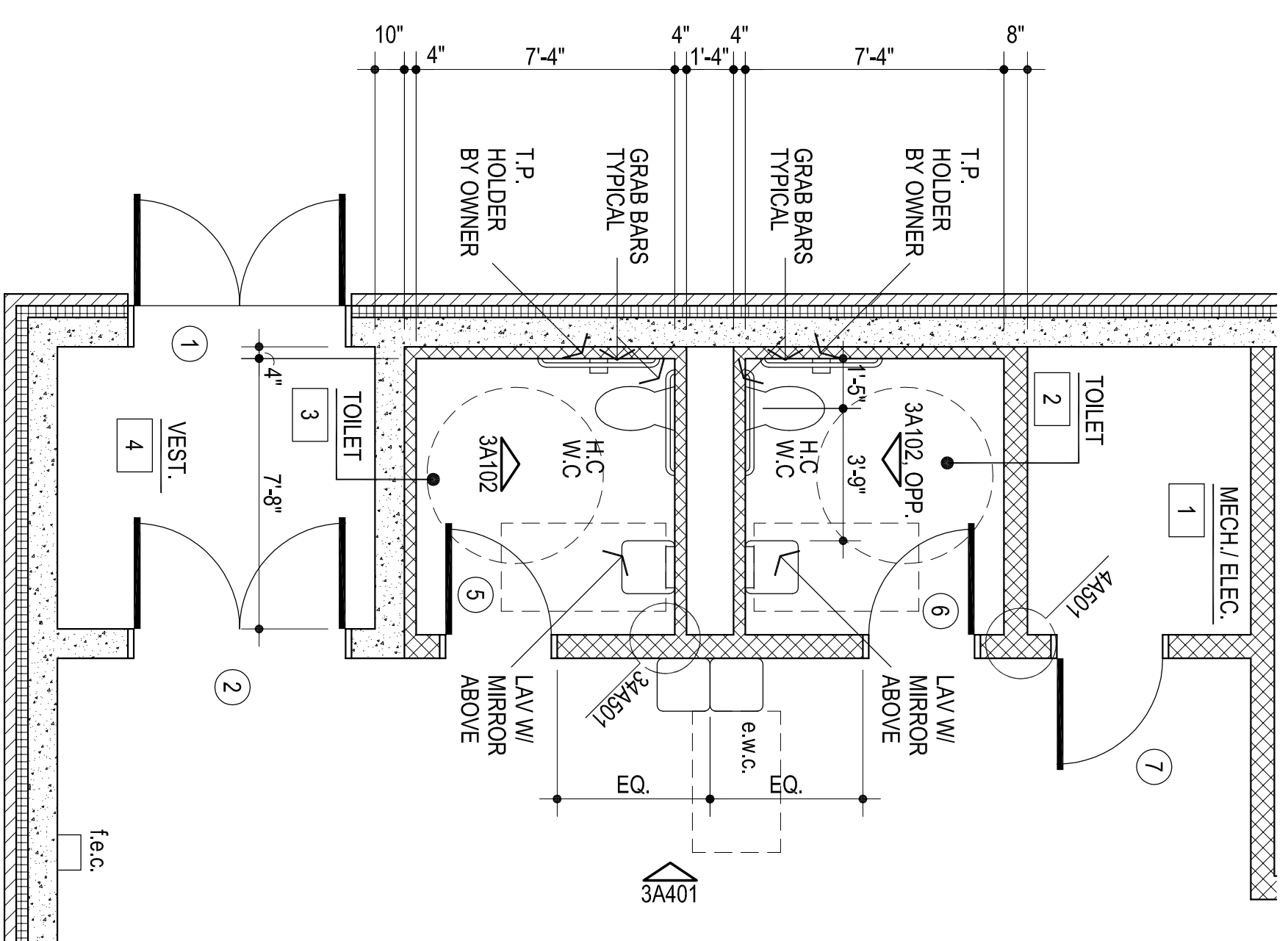
1 FLOOR PLAN

1/8" = 1'-0" 2,760 sq. ft.



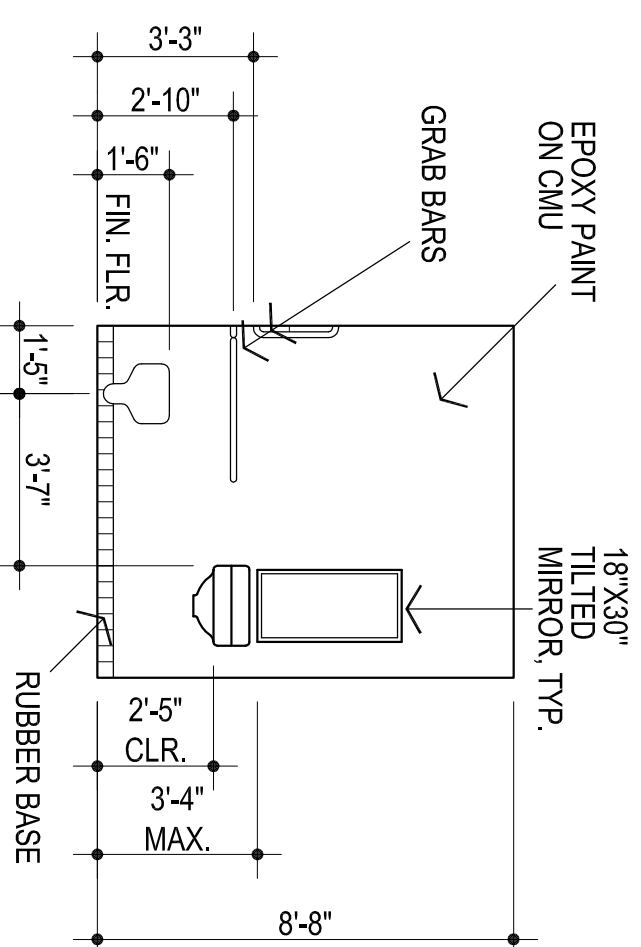
NOTE: CONTRACTOR TO VERIFY THAT THE MOUNTING HEIGHTS OF ALL WALL MOUNTED FIXTURES (I.E. PLUMBING FIXTURES, GRAB BARS, MIRRORS, ETC.) MEET ALL APPLICABLE CODES & STANDARDS PRIOR TO INSTALLATION.

MISCELLANEOUS NOTES:
 1. F.E.C. - FIRE EXTINGUISHER AND CABINET - SURFACE MOUNTED



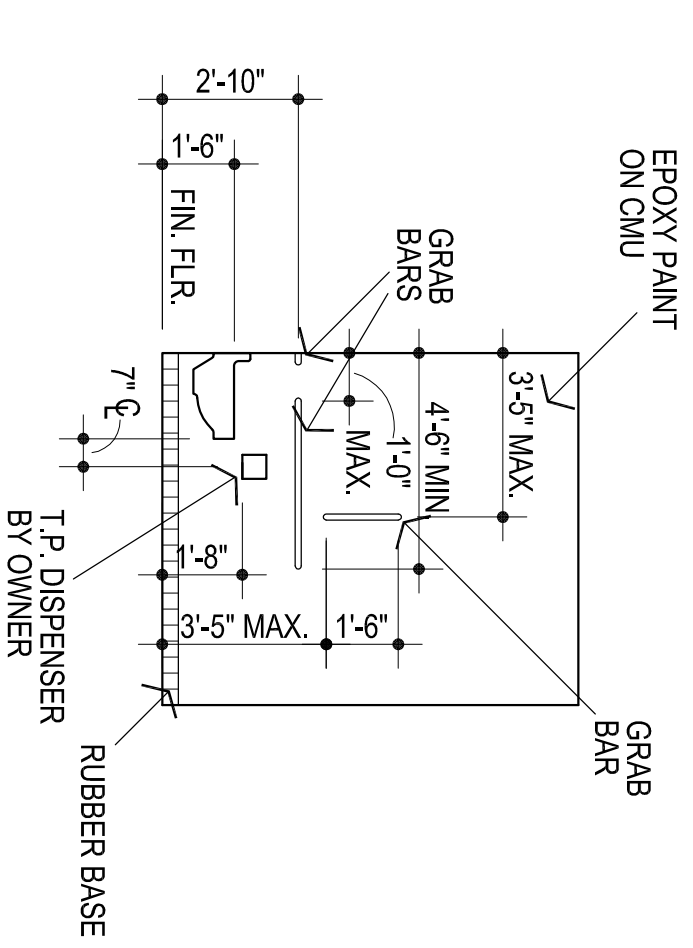
2 ENLARGED FLOOR PLAN

1/4" = 1'-0"



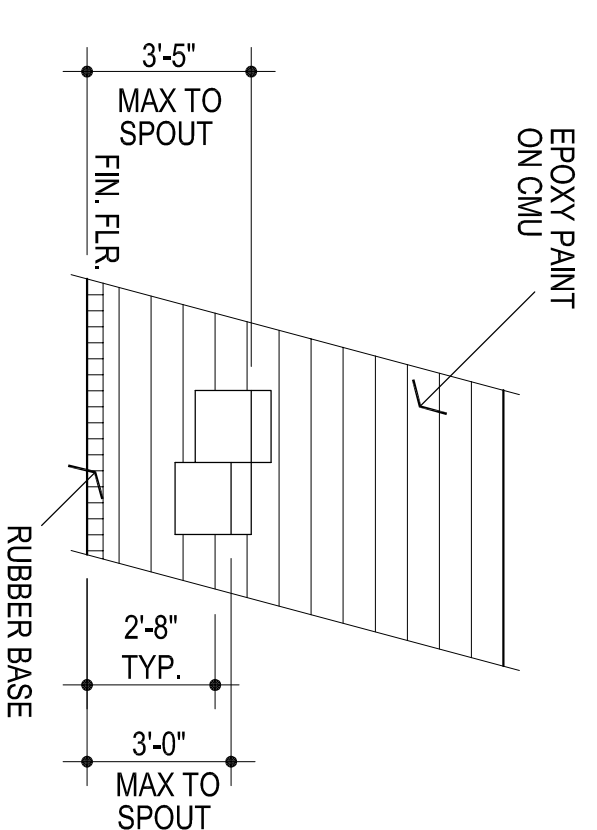
3 N. WALL ROOM # 3, S. WALL ROOM # 2 OPP.

1/4" = 1'-0"



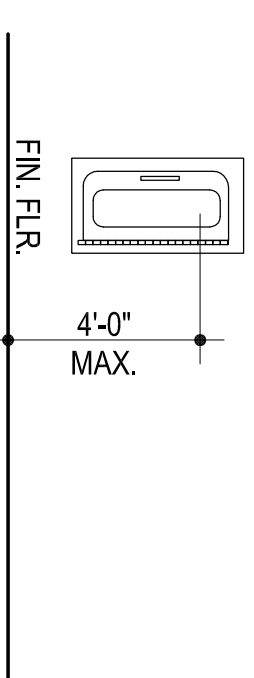
4 HANDICAP ACCESSIBLE W.C.

1/4" = 1'-0"



5 E.W.C. ELEV. @ ROOM #5

1/4" = 1'-0"



6 TYPICAL MOUNTING HEIGHTS

1/4" = 1'-0"



the Abila Griffin Partnership L.L.C.

201 N. BROADWAY
 SUITE 210
 MOORE, OK. 73160
 405.735.3477
 ACP@theACGP.net
 www.theACGP.net

CEDAR CREEK INC.
 CIVIL
 KFC ENGINEERING
 STRUCTURAL
 SALAS ORBEN
 MECHANICAL/ELECTRICAL



CS
 drawn by
 MA
 checked by
 OCTOBER 2022
 date
 revisions

MOORE PUBLIC SCHOOLS
 BOARD OF EDUCATION
 MOORE, OKLAHOMA

Moore Public Schools
 LEARNING FOR LIFE

NEW ADDITION
 KELLEY ELEMENTARY
 SCHOOL

Sheet No.
A102

FLOOR PLAN
 OWNERSHIP USE OF DOCUMENTS:
 ACP EXPRESSLY RESERVES ITS COPYRIGHT AND OTHER PROPERTY RIGHTS OF ALL PLANS AND DRAWINGS DESIGNED AND/OR PRODUCED BY ACP AND/OR ANY OF ITS AFFILIATES. ANY REPRODUCTION OR TRANSMISSION OF ANY PART OF THESE PLANS WITHOUT THE EXPRESSED WRITTEN CONSENT OF ACP.