

CEDAR CREEK INC.

CIVIL

KFC ENGINEERING

STRUCTURAL

MECHANICAL ELECTRICAL

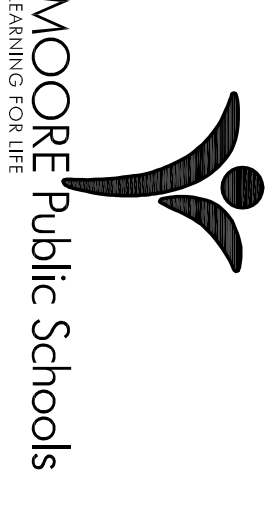
SALAS OBRIEN



10/14/22

CS _____
drawn by _____
MA _____
checked by _____
OCTOBER 2022
date _____
revisions _____

MOORE PUBLIC SCHOOLS
BOARD OF EDUCATION
MOORE, OKLAHOMA



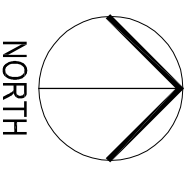
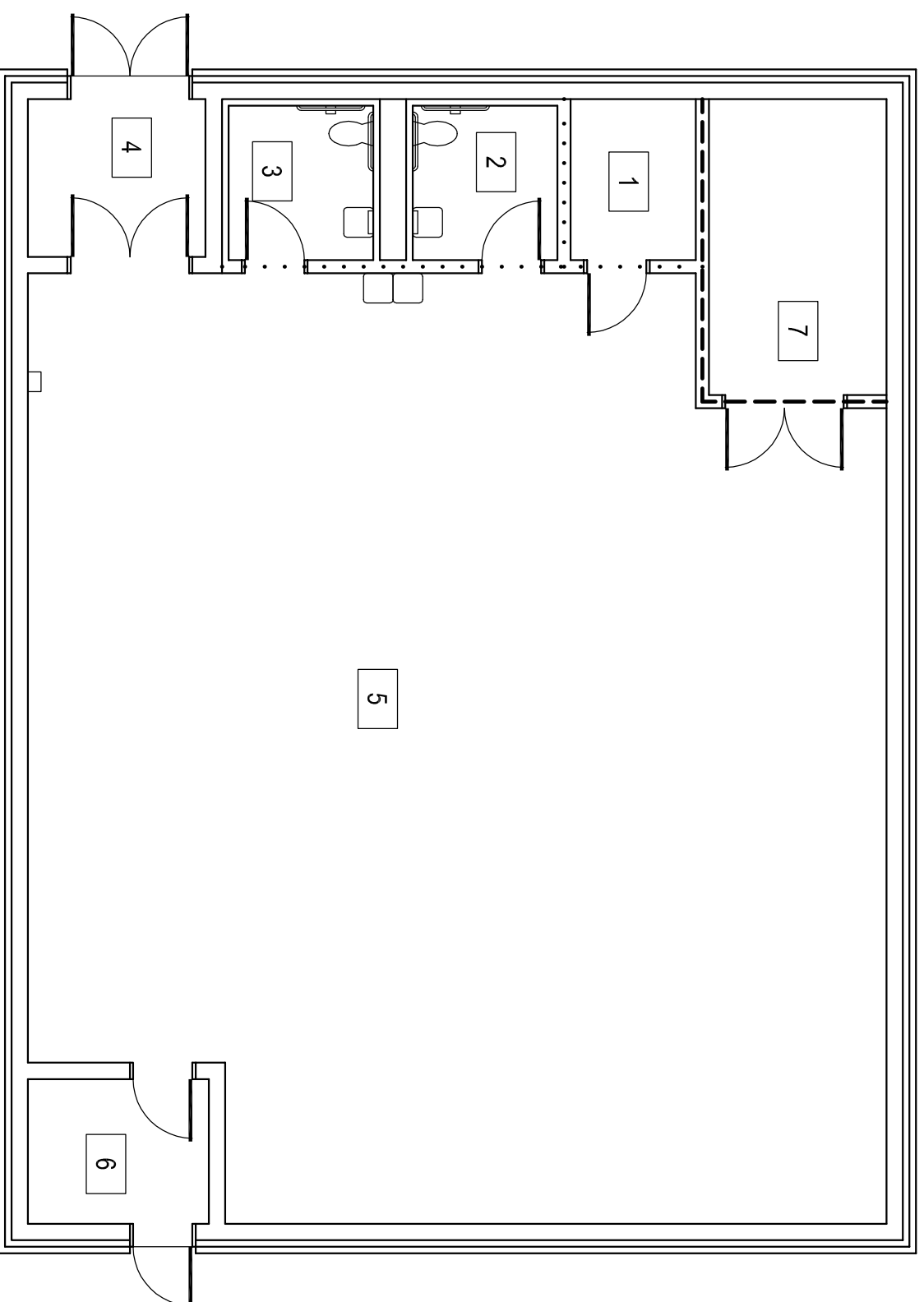
NEW ADDITION
KELLEY ELEMENTARY
SCHOOL

Sheet No. _____

A100

FIRE CODE PLAN
OWNERSHIP USE OF DOCUMENTS:

AGP EXPRESSLY RESERVES ITS
COPYRIGHT AND OTHER PROPERTY
RIGHTS OF ALL PLANS AND DRAWINGS
DESIGNED AND/OR PRODUCED BY
AGP. ANY REPRODUCTION, IN ANY
MANNER, OF ANY PART OF THESE
PLANS WITHOUT THE EXPRESSED WRITTEN
CONSENT OF AGP.



FIRE CODE FLOOR PLAN
1/8" = 1'-0"

CONSTRUCTION DATA (TABLE 603):

OCCUPANCY - E / SHELTER
CONSTRUCTION TYPE - TYPE II - B
BASIC ALLOWABLE AREA - 14,500 S.F. PER FLOOR
ALLOWABLE STORIES - 1
ACTUAL STORIES - 1
ACTUAL HEIGHT - 16'-0"

BUILDING SIZES:
STORM SHELTER: 1 STORY @ 2,760 S.F.

STRUCTURAL FIRE PROTECTION (TABLE 601):
EXTERIOR BEARING WALLS 0 HOUR
INTERIOR BEARING WALLS NONCOMBUSTIBLE
EXTERIOR NONBEARING WALLS NONCOMBUSTIBLE
COLUMNS 0 HOUR
BEAMS 0 HOUR
PERMANENT PARTITIONS NONCOMBUSTIBLE
FLOOR ASSEMBLIES 0 HOUR
ROOF ASSEMBLIES 0 HOUR
EXTERIOR OPENINGS N/A

PASSIVE FIRE SAFETY SYSTEM:
PORTABLE FIRE EXTINGUISHERS (RE: SHEET A102)
TRAVEL DISTANCE = 200'-0" MAX.
DEADEND - 20'-0" MAX.
ACTUAL DEADEND - NONE

ACTIVE FIRE SAFETY SYSTEMS:
FIRE ALARM SYSTEM
SMOKE DETECTION
AUTOMATIC AIR HANDLING EQUIP. SHUTDOWN
EXT. LIGHTS/EMERGENCY LIGHTS BATTERY

CODES/REGULATIONS USED (CITY OF MOORE - AUTHORITY HAVING JURISDICTION):
2015 IBC - INTERNATIONAL BUILDING CODE
AMERICAN WITH DISABILITIES ACT ACCESSIBILITY GUIDELINES
2014 NATIONAL ELECTRICAL CODE
2015 INTERNATIONAL PLUMBING CODE
2015 INTERNATIONAL MECHANICAL CODE
2015 INTERNATIONAL FIRE CODE
2015 ENERGY CONSERVATION CODE
ASSOCIATED SUPPLEMENTS TO EACH CODE

OCCUPANT LOAD (TABLE 901.1, IBC-500):
STORM SHELTER: 334 OCCUPANTS

EGRESS WIDTH:
ADDITION: REQUIRED 67"
ADDITION: PROVIDED 108"

PLUMBING FIXTURES (TABLE 702.2 ICC-500):
TOTAL OCCUPANT LOAD
TORNADO SHELTER = 334

TOTAL REQUIRED:
WATER CLOSETS = 2
LAVATORIES = 1
DRINKING FOUNTAINS = 1

TOTAL PROVIDED:
WATER CLOSETS = 2
LAVATORIES = 2
DRINKING FOUNTAINS = 2



DENOTES PARTITIONS CLOSE-OUT TO BOTTOM OF DECKING - CLOSE-OUT PARTITIONS TO BE CMU WHERE INDICATED ON STRUCTURAL FOR LOAD BEARING CONDITIONS. ALL OTHER INDICATED LOCATIONS TO BE CONSTRUCTED OF 1-LAYER OF 5/8" GYP. BOARD EACH SIDE ON 3.5# METAL STUDS @ 16" O.C.

DENOTES PARTITIONS CLOSE-OUT TO BOTTOM OF DECKING - CLOSE-OUT PARTITIONS TO BE 8" CMU - 2 HOUR