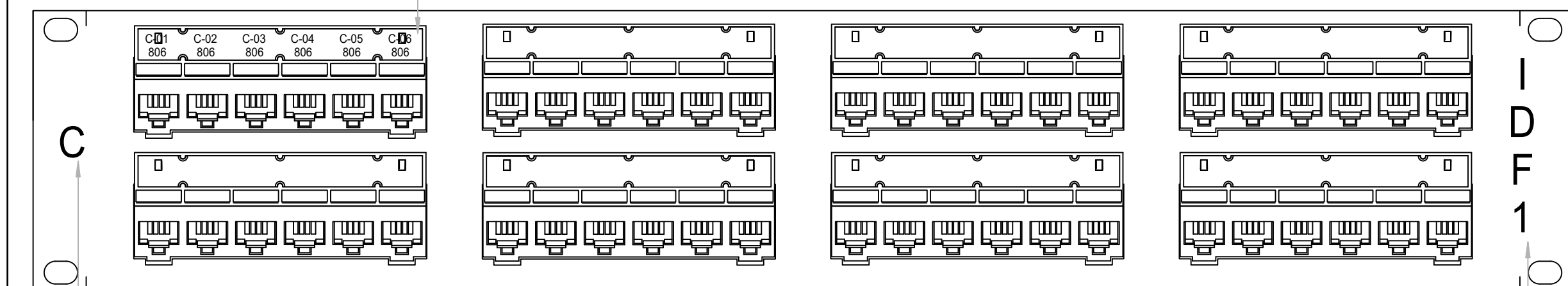


INDIVIDUAL PORT IDENTIFICATION:  
EACH PATCH PANEL PORT SHALL BE LABELED WITH THE STATION PORT NUMBER AND THE ROOM NUMBER IT SERVES. (IN THIS CASE, PORTS 1-6 ARE SERVING CABLES 1 THRU 6 IN ROOM #806)  
COORDINATE ROOM NUMBERS WITH FINAL GRAPHICS PACKAGE ROOM NUMBERS AND NOT CONSECUTION PLAN ROOM NUMBERS.

FIBER OPTIC ENCLOSURE



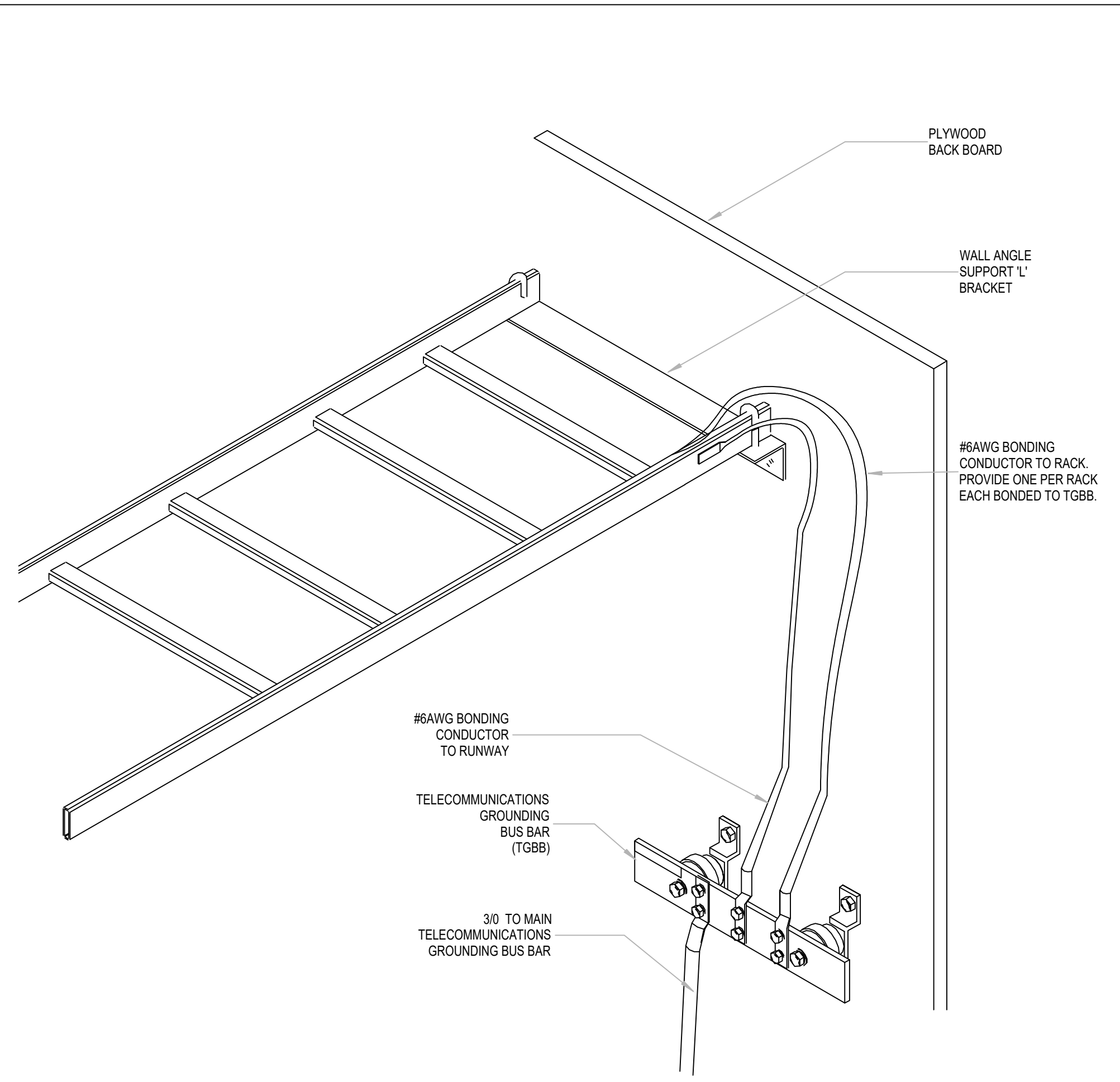
PANEL IDENTIFICATION (PANEL 'C' WOULD INDICATE THE 3RD PATCH PANEL IN THE COMMUNICATION CLOSET)

1. PATCH PANEL PORT LABELING SHALL BE GENERATED AND SHALL NOT BE LESS THEN 1/4" IN HEIGHT.

2. PATCH PANEL AND CLOSET IDENTIFICATION LABEL SHALL BE MACHINE GENERATED AND SHALL NOT BE LESS THEN 1/8" HEIGHT.

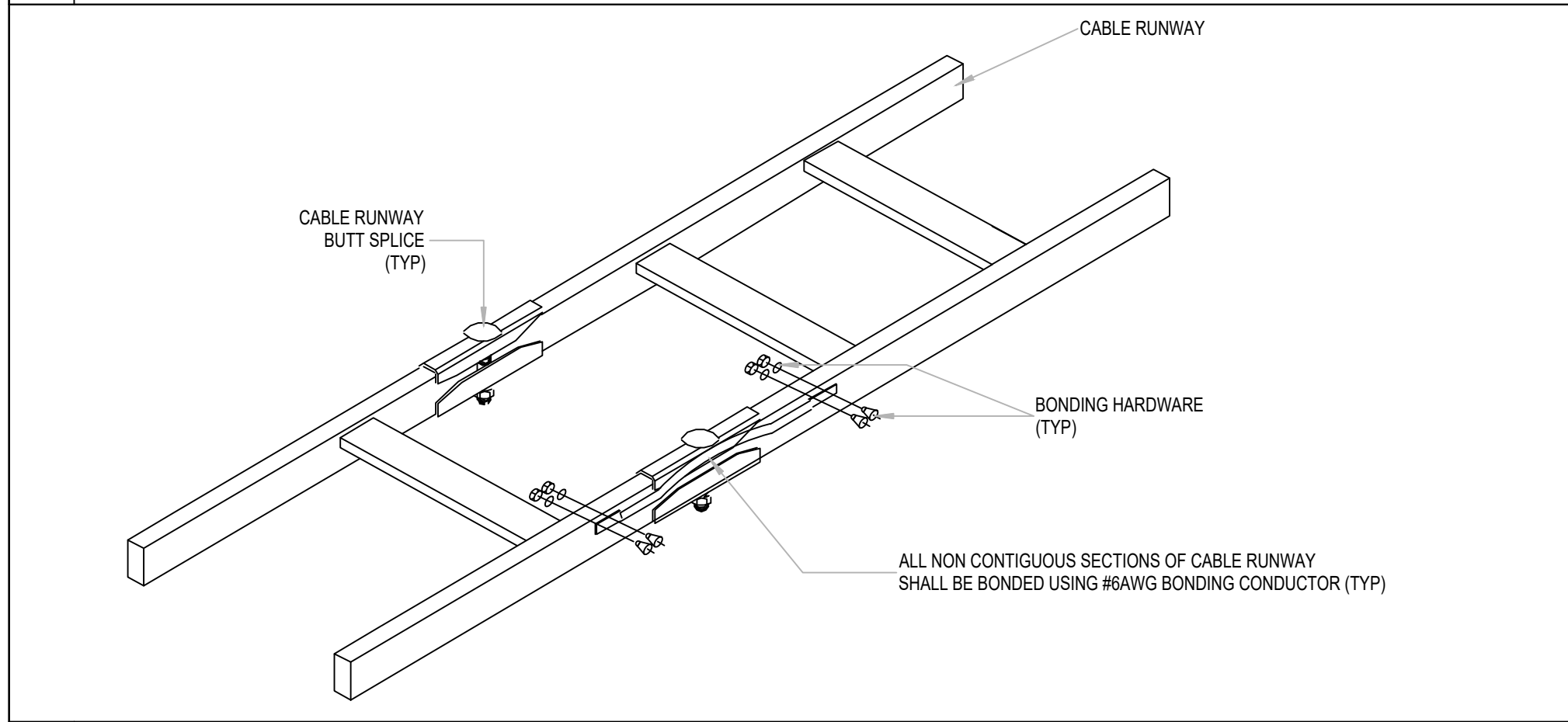
3. COORDINATE EXACT LABELING SCHEME WITH OWNER AND ENGINEER.

CLOSET IDENTIFICATION (IN THIS CASE, THE LABEL INDICATES IDF CLOSET #1. THE MDF SHALL BE LABELED 'MDF')

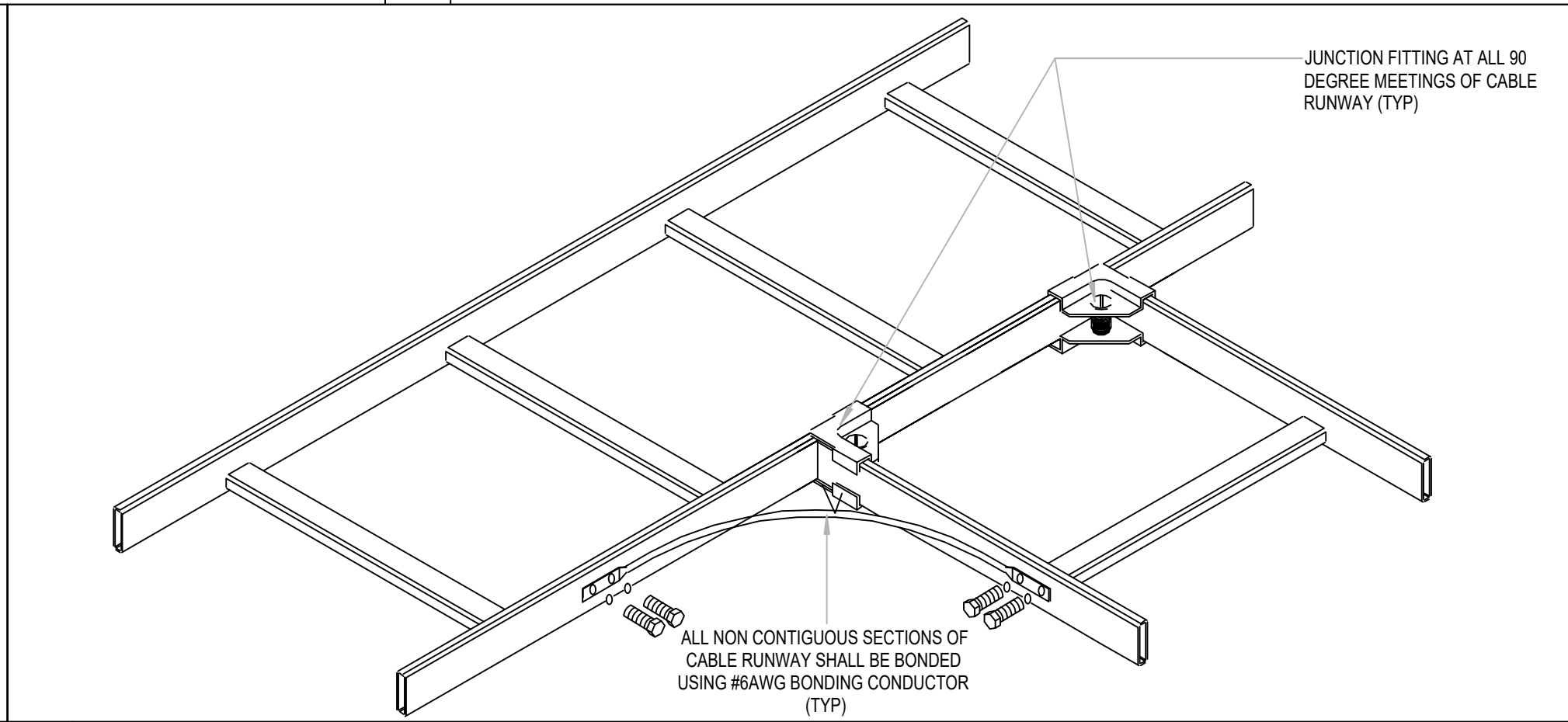


01 FIBER ENCLOSURE/ COPPER PATCH PANEL LABELING DETAIL NOT TO SCALE

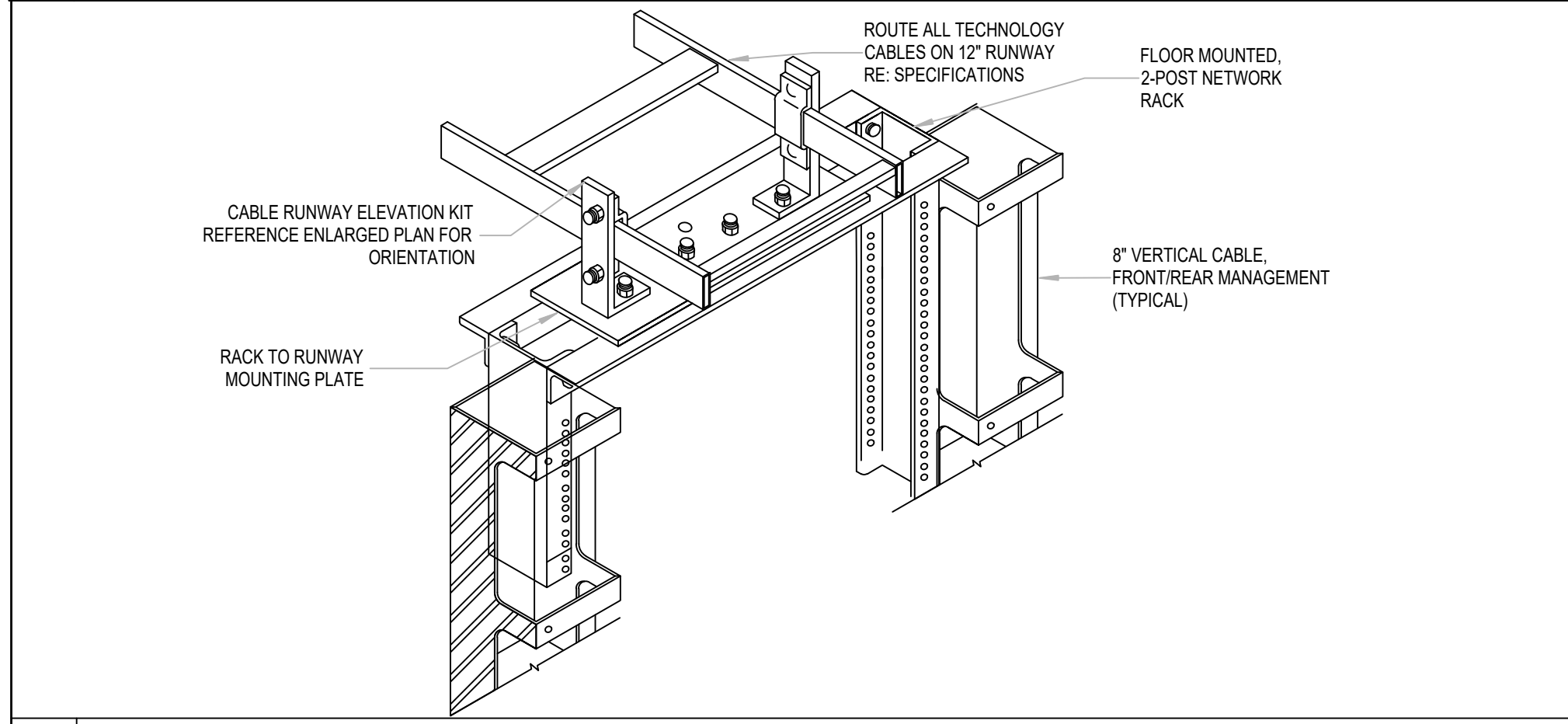
02 CABLE RUNWAY - GROUNDING AND BONDING NOT TO SCALE



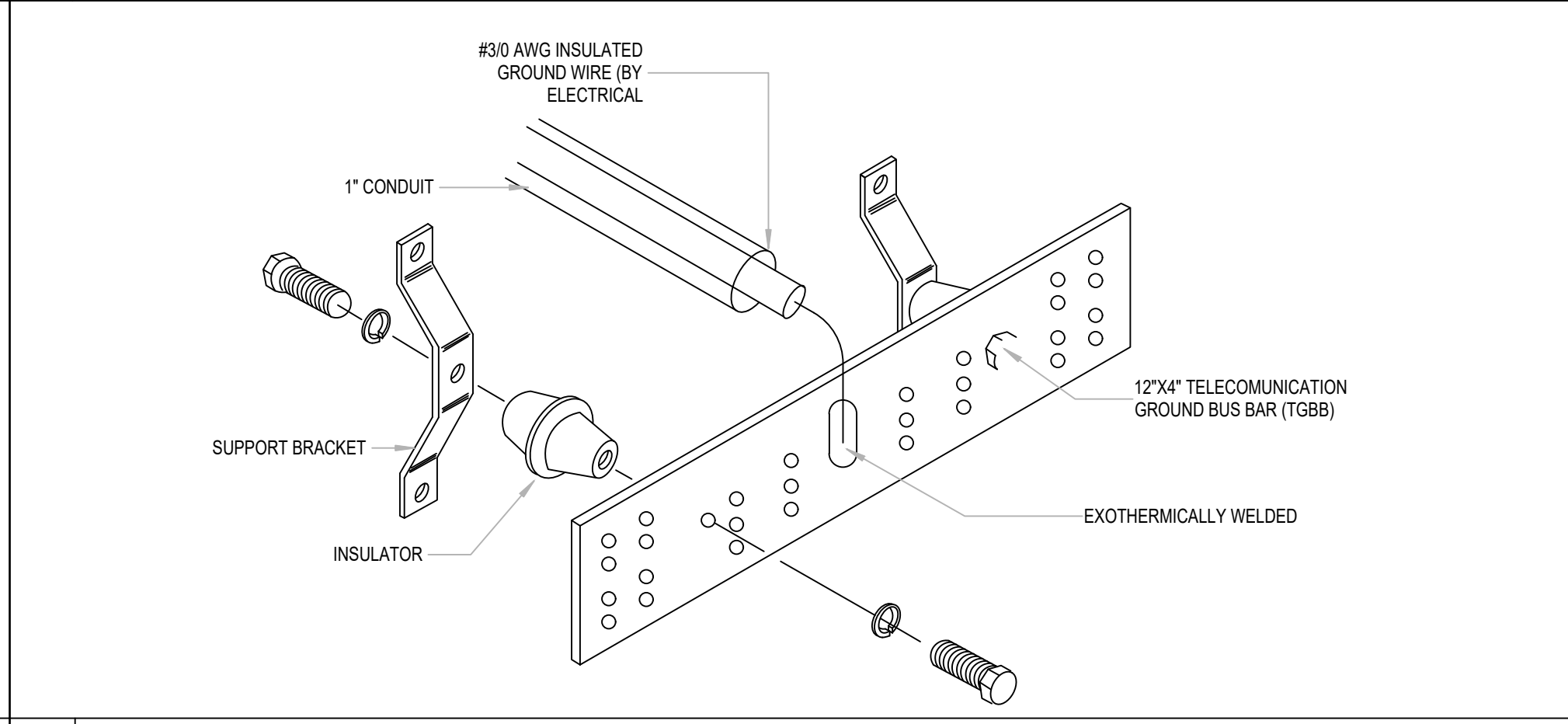
03 CABLE RUNWAY - BONDING AND BUTT SPLICE NOT TO SCALE



04 CABLE RUNWAY - JUNCTION AND BONDING NOT TO SCALE



05 RACK TO RUNWAY DETAIL NOT TO SCALE



06 TELECOMMUNICATION GROUNDING BUS DETAIL NOT TO SCALE

NY	drawn by
NY	checked by
JULY 2023	date
	revisions