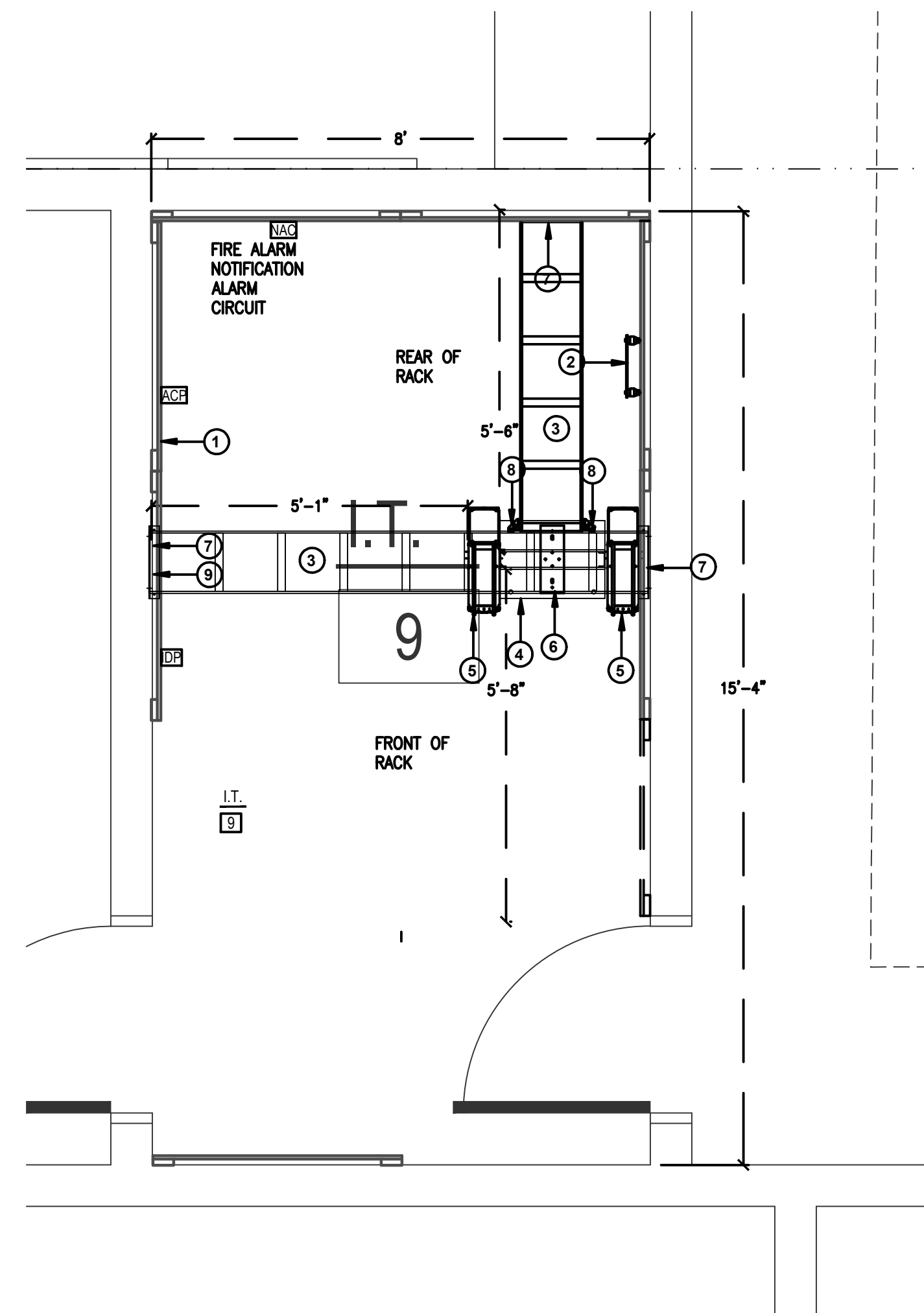


TECH ENLARGED PLAN GEN NOTES

- ALL RACK LOCATIONS SHALL BE COORDINATED WITH THE PROJECT'S TECHNOLOGY CONSULTANT AND OWNER PRIOR TO INSTALLATION. NO RACKS AND/OR ASSOCIATED CABLE TRAY SYSTEM SHALL BE PERMANENTLY INSTALLED PRIOR TO DOCUMENTED ACCEPTANCE.
- PATCH PANEL QUANTITY SHALL BE DETERMINED BY STATION CABLE DROP COUNTS SHOWN ON TECHNOLOGY PLANS AND THE ASSOCIATED PROJECT MATRIX. ENSURE PATCH PANEL QUANTITY IS SUFFICIENT TO SUPPORT THE NUMBER OF PORTS REQUIRED BY TECHNOLOGY PLANS PLUS AN ADDITIONAL 25% FOR FUTURE GROWTH.
- CONTRACTOR SHALL NOT MOUNT EXCEED MORE THAN A 50% RACK FILL RATIO ON ANY RACK.
- REFERENCE SPECIFICATIONS FOR MATERIALS AND METHODS
- ALL RACKS, LADDER TRAYS, LIGHTNING PROTECTION ENCLOSURES AND ANY OTHER DEVICES, PART OF THE STRUCTURED CABLING SYSTEM, SHALL BE GROUNDED TO A GROUND BUS BAR LOCATED IN THE TELECOMMUNICATIONS ROOM WITH A #6AWG GROUND CABLE. DAISY CHAINING WILL NOT BE ACCEPTED. ALL ITEMS SHALL HAVE A DEDICATED GROUND CABLE TO BUS BAR. GROUND CABLE SHALL BE GREEN IN COLOR.

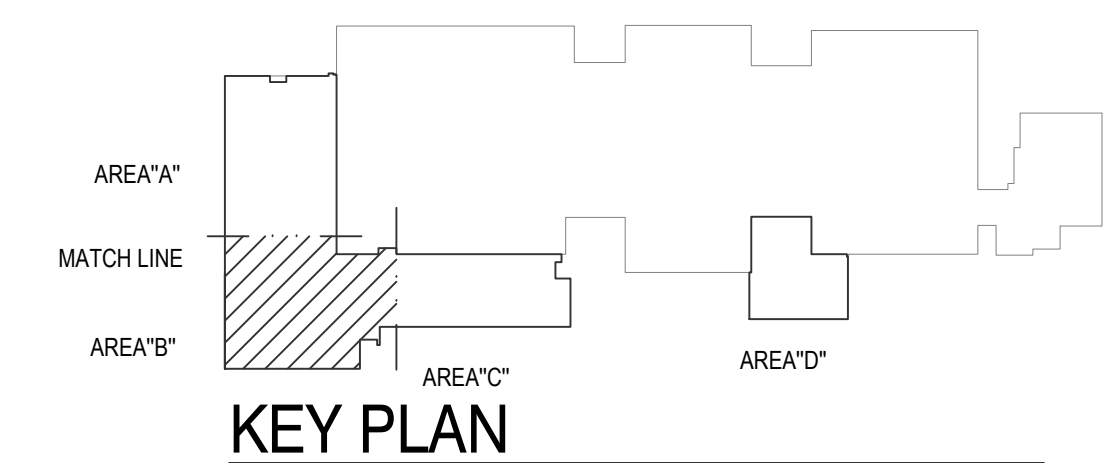
TECHNOLOGY ENLARGED PLAN KEYED NOTES

- INDICATES THE LOCATION OF A 8" TALL, 3/4" FIRE RATED PLYWOOD CONTRACTOR TO PROVIDE AND INSTALL PLYWOOD AND ALL REQUIRED MOUNTING HARDWARE. PLYWOOD SHALL BE PAINTED WHITE WITH FIRE RATED PAINT. TYPICAL FOR ALL SHOWN ON DRAWING.
- INDICATES THE LOCATION OF A NEW WALL MOUNTED TELECOMMUNICATION GROUND BUS BAR (TGGB). CABLING CONTRACTOR TO PROVIDE BUS BAR AND ALL REQUIRED MATERIAL TO MOUNT AT THE LOCATION SHOWN. TGGB TO BE MOUNTED AT +93" A.F.F.
- PROVIDE AND INSTALL A 12" WIDE, UNIVERSAL LADDER TRAY AND ALL REQUIRED MOUNTING HARDWARE. LADDER TRAY SHALL BE BLACK IN COLOR. TYPICAL FOR ALL SHOWN ON ENTIRE PROJECT.
- PROVIDE AND INSTALL ONE (1) 2-POST, FLOOR MOUNTED, 7' RELAY RACK (BLACK IN COLOR). PROVIDE BONDING WASHERS, BOLTS, AND NUTS AT ALL MECHANICALLY CONNECTED LOCATIONS OF THE RACK TO ENSURE THAT ALL PIECES OF THE RACK ARE COMPLETELY BONDED. SCRAPING PAINT FROM RACKS TO MAKE A BOND WILL NOT BE ACCEPTED. ALL RACK MOUNTED COMPONENTS SHALL BE MOUNTED WITH BONDING SCREWS AND THE CONTRACTOR SHALL PROVIDE THE OWNER WITH (50) ADDITIONAL BONDING SCREWS FOR THE INSTALLATION OF OWNER EQUIPMENT. NO DAISY CHAINING GROUNDS FROM RACK TO CABLE TRAY OR TO OTHER RACKS WILL BE ACCEPTED. ALL GROUNDS SHALL BE HOME RUN TO THE TELECOMMUNICATIONS GROUND BUS BAR (TGGB). TYPICAL FOR ALL SHOWN ON THE ENTIRE PROJECT.
- PROVIDE AND INSTALL ONE (1) 7'x6", FRONT AND REAR MANAGED, VERTICAL CABLE MANAGER (BLACK IN COLOR). CABLE MANAGERS SHALL BE INSTALLED ON EACH END OF THE RACK SYSTEMS AND BETWEEN EACH RACK. CABLE MANAGERS SHALL HAVE A SINGLE, SOLID, FULL HEIGHT HINGED DOOR IN THE FRONT AND WIDE SPACED CABLE RINGS WITH SPIN-OPEN LATCHES IN THE REAR. TYPICAL FOR ALL SHOWN IN THE ENTIRE PROJECT.
- PROVIDE AND INSTALL RACK-TO-RUNWAY MOUNTING PLATE FOR ALL LOCATIONS WHEN ASSOCIATED WITH A 2-POST OR 4-POST BACK RACK. MOUNTING PLATE SHALL BE BLACK IN COLOR. PROVIDE (1) 6" LADDER TRAY ELEVATION KIT (BLACK IN COLOR) AT EACH RACK-TO-RUNWAY MOUNTING PLATE LOCATION. TYPICAL FOR ALL SHOWN ON THE ENTIRE PROJECT.
- INDICATES THE LOCATION OF A 12" LADDER TRAY WALL ANGLE SUPPORT BRACKET, BLACK IN COLOR. CONTRACTOR TO PROVIDE AND INSTALL WALL ANGLE SUPPORT BRACKET AND ALL REQUIRED MOUNTING HARDWARE AT EACH LOCATION WHERE LADDER TRAY TERMINATES INTO A VERTICAL WALL SECTION. TYPICAL FOR ALL SHOWN.
- PROVIDE AND INSTALL A LADDER JUNCTION SPLICE KIT, BLACK IN COLOR. PROVIDE ONE (1) KIT AT EACH LADDER TRAY JUNCTION SPLICE LOCATION ON THE ENTIRE PROJECT.
- PROVIDE AND INSTALL A MINIMUM OF THREE (3) STI EZPATH SERIES 44+ THRU-WALL PENETRATION SLEEVES WITH MULTI-GANG WALLPLATE BRACKET SYSTEM AT INDICATED LOCATION. PROVIDE ADDITIONAL AS REQUIRED TO MAINTAIN A MAXIMUM OF 40% FILL RATIO, PLUS ONE (1) ADDITIONAL FOR SPARE.



1 IDF ROOM - I.T. 9

SCALE: 1/2" = 1'-0"



KEY PLAN

