



KC

drawn by

KP

checked by

JULY 2023

date

revisions

MOORE PUBLIC SCHOOLS
BOARD OF EDUCATION
MOORE, OKLAHOMA



CLASSROOM ADDITION
HIGHLAND WEST
JUNIOR HIGH SCHOOL

sheet no:

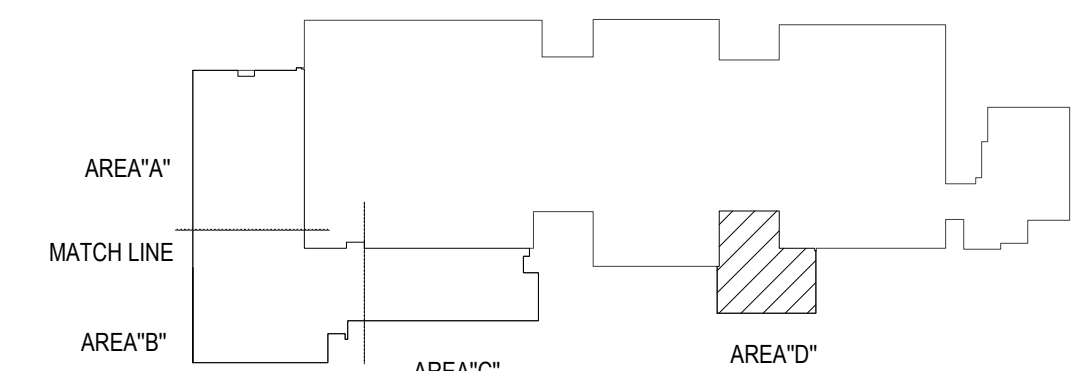
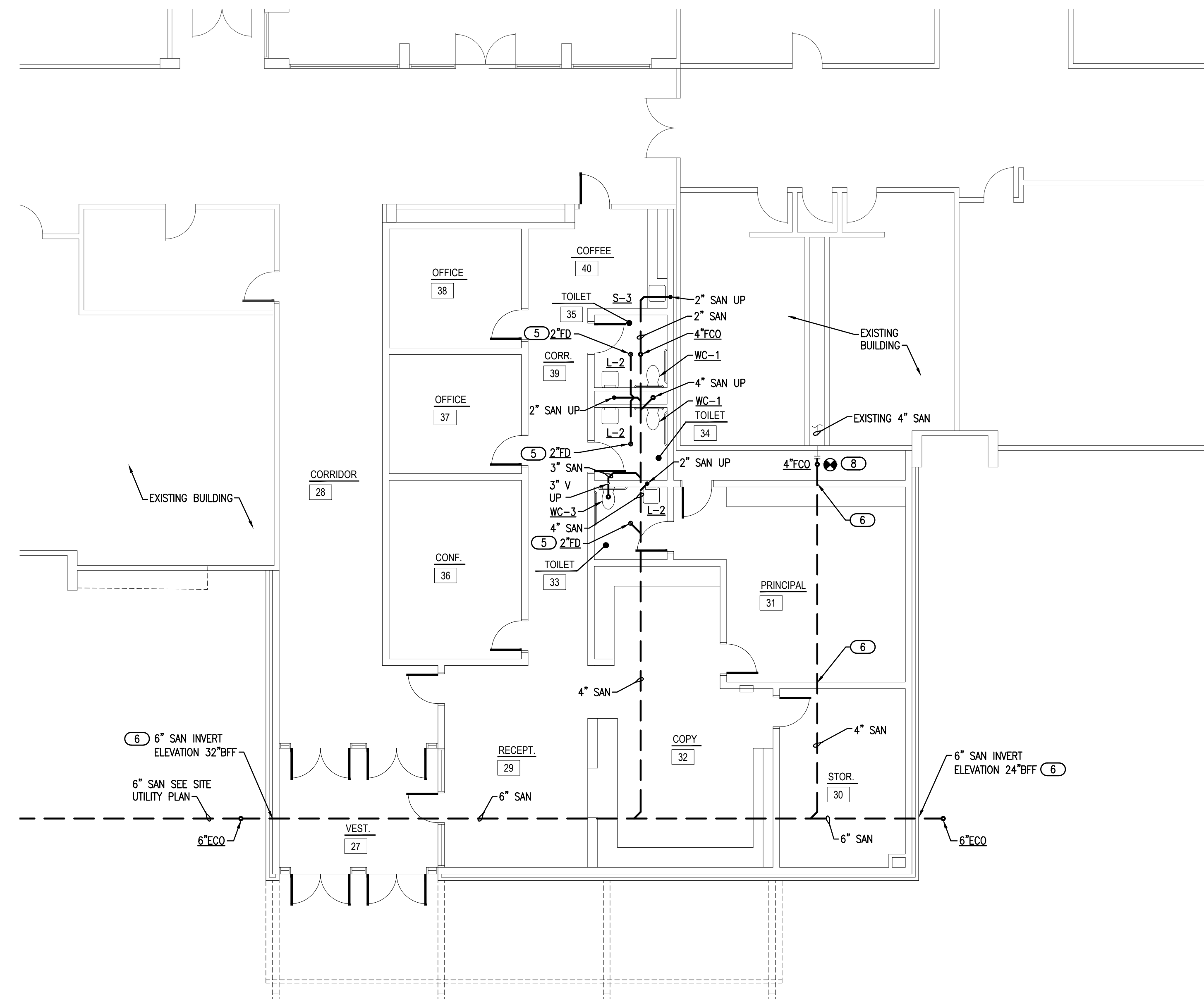
P104

GENERAL NOTES

- COORDINATE WORK WITH ALL OTHER TRADES ON SITE.
- COORDINATE ALL BELOW GRADE PIPE ROUTING WITH STRUCTURAL FOUNDATIONS AND REQUIRED PIPE SLEEVES THRU FOUNDATION PENETRATIONS.
- FIELD VERIFY EXISTING CONDITIONS PRIOR TO COMMENCING WORK.
- PRIOR TO COMMENCING WORK, COORDINATE WITH SITE CONTRACTOR FOR SANITARY SEWER AND WATER INVERT ELEVATIONS.
- REFER TO PLUMBING FIXTURE SCHEDULE ON SHEET P601 FOR FIXTURE ROUGH-IN PIPE SIZES.
- PIPE TRENCHES SHALL HAVE SAND BEDDING TO A MINIMUM POINT 6" ABOVE THE TOP OF PIPE. REFER TO SPECIFICATION SECTION 22 05 00.
- INSTALL BELOW FLOOR 1/2" CW LINE TYPE K COPPER OR PEX-a FOR TRAP PRIMER TO FLOOR DRAINS. SLOPE LINE CONTINUOUSLY TOWARDS DRAIN. SEE DETAIL 1/P501.

KEYED NOTES

- PROVIDE CAST IRON PIPE SLEEVE FOR SANITARY PIPE BELOW GRADE BEAM. INSTALL FOAM SPACER BLOCKS TO MAINTAIN PIPE IN CENTER OF SLEEVE. COORDINATE PIPE SLEEVE INSTALLATION WITH STRUCTURAL.
- INSTALL 4" SANITARY BACKWATER VALVE AND 4" EXTERIOR CLEANOUTS. PROVIDE CONCRETE PAD AT GRADE. SEE DETAIL 4/P501.
- ROUTE 2" SANITARY LINE UP TO 2" AFF AND INSTALL 2x4 FITTING FOR HUB DRAIN. COORDINATE INSTALLATION WITH MC. ROUTE TRAP PRIMER LINE TO HUB DRAIN. MC TO ROUTE FURNACE CONDENSATE DRAIN LINES TO HUB DRAIN. SEE DETAIL 1/P501.
- COORDINATE WITH STRUCTURAL FOR ROUTING SANITARY UP TO ABOVE GRADE BEAM AND UP INTO WALL ABOVE.
- INSTALL BELOW FLOOR 1/2" CW LINE TYPE K COPPER OR PEX-a FOR TRAP PRIMER TO FLOOR DRAINS. SLOPE LINE CONTINUOUSLY TOWARDS DRAIN. SEE DETAIL 1/P501.
- PROVIDE CAST IRON PIPE SLEEVE FOR SANITARY PIPE THRU GRADE BEAM. INSTALL FOAM SPACER BLOCKS TO MAINTAIN PIPE IN CENTER OF SLEEVE. COORDINATE PIPE SLEEVE INSTALLATION WITH STRUCTURAL.
- PROVIDE CAST IRON PIPE SLEEVE FOR STORM PIPE THRU OR BELOW GRADE BEAM. INSTALL FOAM SPACER BLOCKS TO MAINTAIN PIPE IN CENTER OF SLEEVE. COORDINATE PIPE SLEEVE INSTALLATION WITH STRUCTURAL.
- CONNECT NEW 4" SANITARY LINE TO EXISTING SANITARY LINE. INSTALL 4" FLOOR CLEANOUT. FIELD VERIFY INVERT ELEVATION OF EXISTING SANITARY LINE.
- CONNECT NEW 3" SANITARY LINE TO EXISTING 2" SANITARY LINE. INSTALL 3" FLOOR CLEANOUT. FIELD VERIFY INVERT ELEVATION OF EXISTING SANITARY LINE.
- PROVIDE CAST IRON PIPE SLEEVE FOR FIRE LINE THRU OR BELOW GRADE BEAM. INSTALL FOAM SPACER BLOCKS TO MAINTAIN PIPE IN CENTER OF SLEEVE. COORDINATE PIPE SLEEVE INSTALLATION WITH STRUCTURAL. COORDINATE INVERT ELEVATION WITH SITE CONTRACTOR.



KEY PLAN



1 PLUMBING PLAN - BELOW GRADE - AREA D

SCALE: 1/8" = 1'-0"



2600 Van Buren St., Suite 2635
Norman, OK 73072
Salas O'Brien Registration: CA# 7058
Expiration Date: 6/30/2025
Salas O'Brien Project Number: 2023-02792-00

OWNERSHIP USE OF DOCUMENTS:

AGP EXPRESSLY RESERVES ITS COPYRIGHT AND OTHER PROPERTY RIGHTS OF ALL PLANS AND DRAWINGS DESIGNED AND/OR PRODUCED. PLANS AND DRAWINGS ARE NOT TO BE REPRODUCED IN ANY FORM OR MANNER WITHOUT THE EXPRESSED WRITTEN CONSENT OF AGP.