

GENERAL NOTES	
1.	COORDINATE INSTALLATION OF EQUIPMENT AND DUCTWORK WITH ALL TRADES.
2.	COORDINATE LOCATION OF THERMOSTATS WITH E.C. ROUGH-IN BY E.C.
3.	COORDINATE CARBON DIOXIDE SENSOR LOCATION WITH EARTHSMART PRIOR TO INSTALLATION.

KEYED NOTES	
①	DUCT UP 8x8 TO CONNECT TO THROAT OPENING OF ROOF HOOD.
②	DUCT UP TO EF 2

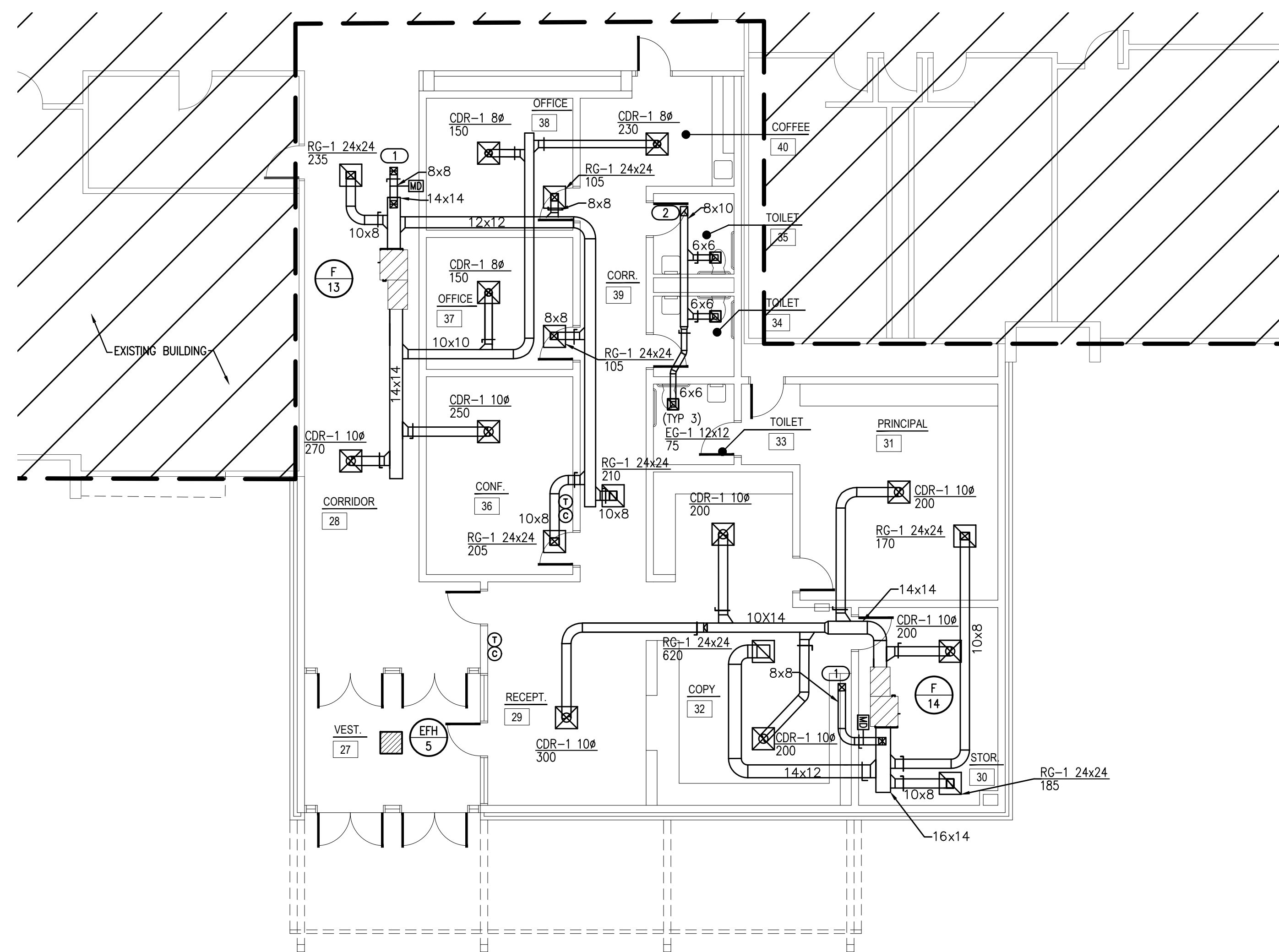
AGP
the Abla Griffin
Partnership L.L.C.

201 N. BROADWAY
SUITE 210
MOORE, OK. 73160
405.735.3477
AGP@theAGP.net
www.theAGP.net

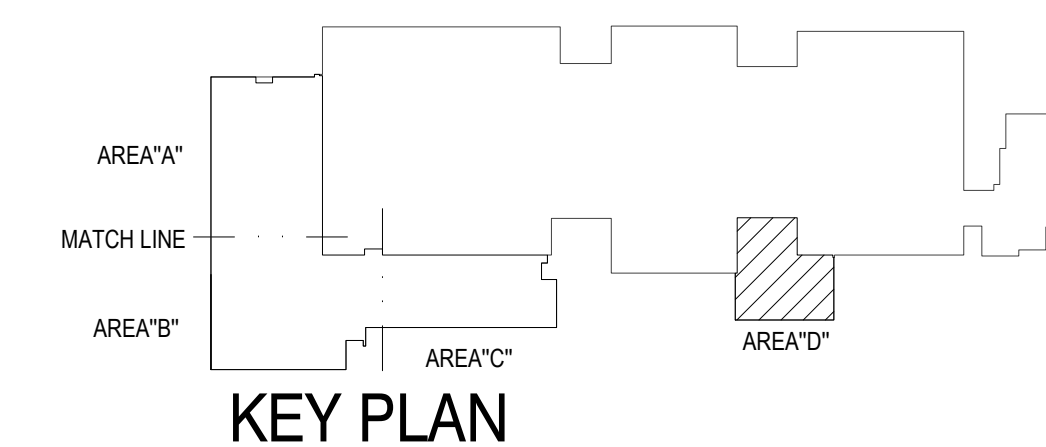
CEDAR CREEK
CIVIL

KFC ENGINEERING
STRUCTURAL

SALAS O'BRIEN
MECHANICAL / ELECTRICAL



1 MECHANICAL PLAN - AREA D
SCALE: 1/8" = 1'-0"



KEY PLAN



Salas O'Brien
2600 Van Buren St., Suite 2635
Norman, OK 73072
Salas O'Brien Registration: CA# 7058
Expiration Date: 6/30/2025
Salas O'Brien Project Number: 2023-02792-00

KF
drawn by
DG
checked by
JULY 2023
date
revisions

MOORE PUBLIC SCHOOLS
BOARD OF EDUCATION
MOORE, OKLAHOMA



CLASSROOM ADDITION
HIGHLAND WEST
JUNIOR HIGH SCHOOL

sheet no:

M104

OWNERSHIP USE OF DOCUMENTS:

AGP EXPRESSLY RESERVES ITS
COPYRIGHT AND OTHER PROPERTY
RIGHTS OF ALL PLANS AND DRAWINGS
DESIGNED AND/OR PRODUCED. PLANS
AND DRAWINGS ARE NOT TO BE
REPRODUCED IN ANY FORM OR MANNER
WITHOUT THE EXPRESSED WRITTEN
CONSENT OF AGP.