

GENERAL NOTES

1. COORDINATE INSTALLATION OF EQUIPMENT AND DUCTWORK WITH ALL TRADES.
2. COORDINATE LOCATION OF THERMOSTATS WITH E.C. ROUGH-IN BY E.C.
3. COORDINATE CARBON DIOXIDE SENSOR LOCATION WITH EARTHSMART PRIOR TO INSTALLATION.
4. M.C. SHALL PROVIDE CARBON MONOXIDE SENSORS WHERE NEEDED PER CODE FOR EXISTING EQUIPMENT THROUGHOUT THE ENTIRE BUILDING. M.C. IS RESPONSIBLE FOR SURVEYING ENTIRE BUILDING AND LOCATING FUEL BURNING HVAC EQUIPMENT FOR SENSOR LOCATIONS. COORDINATE WITH E.C FOR POWER CONNECTIONS.

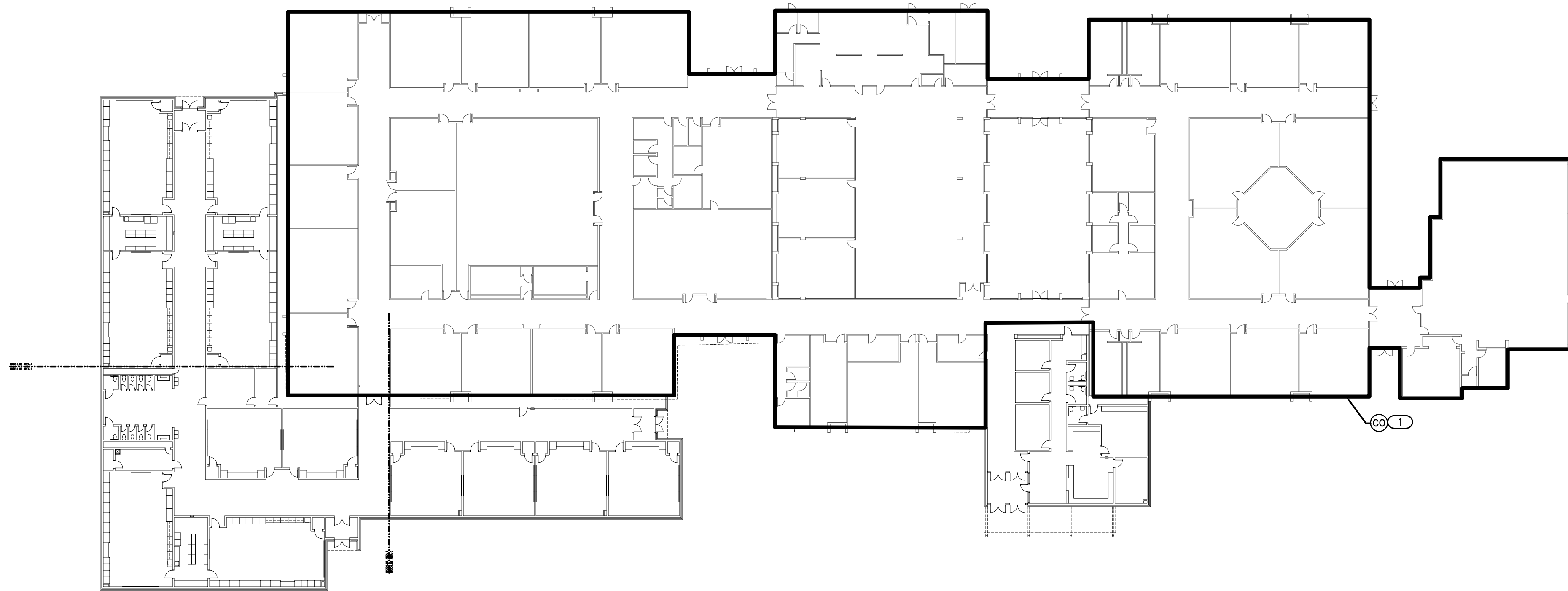
KEYED NOTES

① CARBON MONOXIDE DETECTOR TO BE INSTALLED IN EXISTING CLASSROOMS ACCORDING TO ALL APPLICABLE CODES. DETECTOR SHALL BE INSTALLED CENTRALLY ON CEILING. ALSO INCLUDE BATTERY BACKUP IN EVENT PRIMARY POWER IS INTERRUPTED. ALARM SIGNAL SHALL BE ROUTED TO ADMINISTRATION OFFICE. COORDINATE WITH E.C. WITH PRIMARY POWER CONNECTION AND SYSTEM CONNECTION.

CEDAR CREEK
CIVIL

KFC ENGINEERING
STRUCTURAL

SALAS O'BRIEN
MECHANICAL / ELECTRICAL



KF
drawn by

DG
checked by

JULY 2023
date

revisions

MOORE PUBLIC SCHOOLS
BOARD OF EDUCATION
MOORE, OKLAHOMA

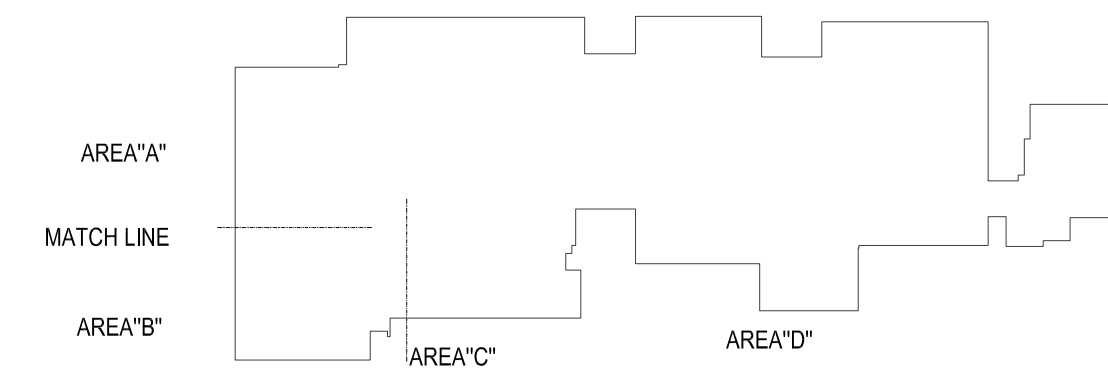


CLASSROOM ADDITION
HIGHLAND WEST
JUNIOR HIGH SCHOOL

sheet no:

M001

1 MECHANICAL SITE PLAN
SCALE: 1/32" = 1'-0"



KEY PLAN



Salas O'Brien

2600 Van Buren St., Suite 2635
Norman, OK 73072
Salas O'Brien Registration: CA# 7058
Expiration Date: 6/30/2025
Salas O'Brien Project Number: 2023-02792-00

OWNERSHIP USE OF DOCUMENTS:
AGP EXPRESSLY RESERVES ITS COPYRIGHT AND OTHER PROPERTY RIGHTS OF ALL PLANS AND DRAWINGS DESIGNED AND/OR PRODUCED. PLANS AND DRAWINGS ARE NOT TO BE REPRODUCED IN ANY FORM OR MANNER WITHOUT THE EXPRESSED WRITTEN CONSENT OF AGP.