



GT

drawn by

TVO

checked by

JULY 2023

date

revisions

MOORE PUBLIC SCHOOLS  
BOARD OF EDUCATION  
MOORE, OKLAHOMA



CLASSROOM ADDITION  
HIGHLAND WEST  
JUNIOR HIGH SCHOOL

sheet no:

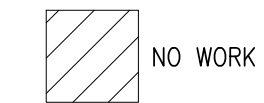
**E211**

OWNERSHIP USE OF DOCUMENTS:

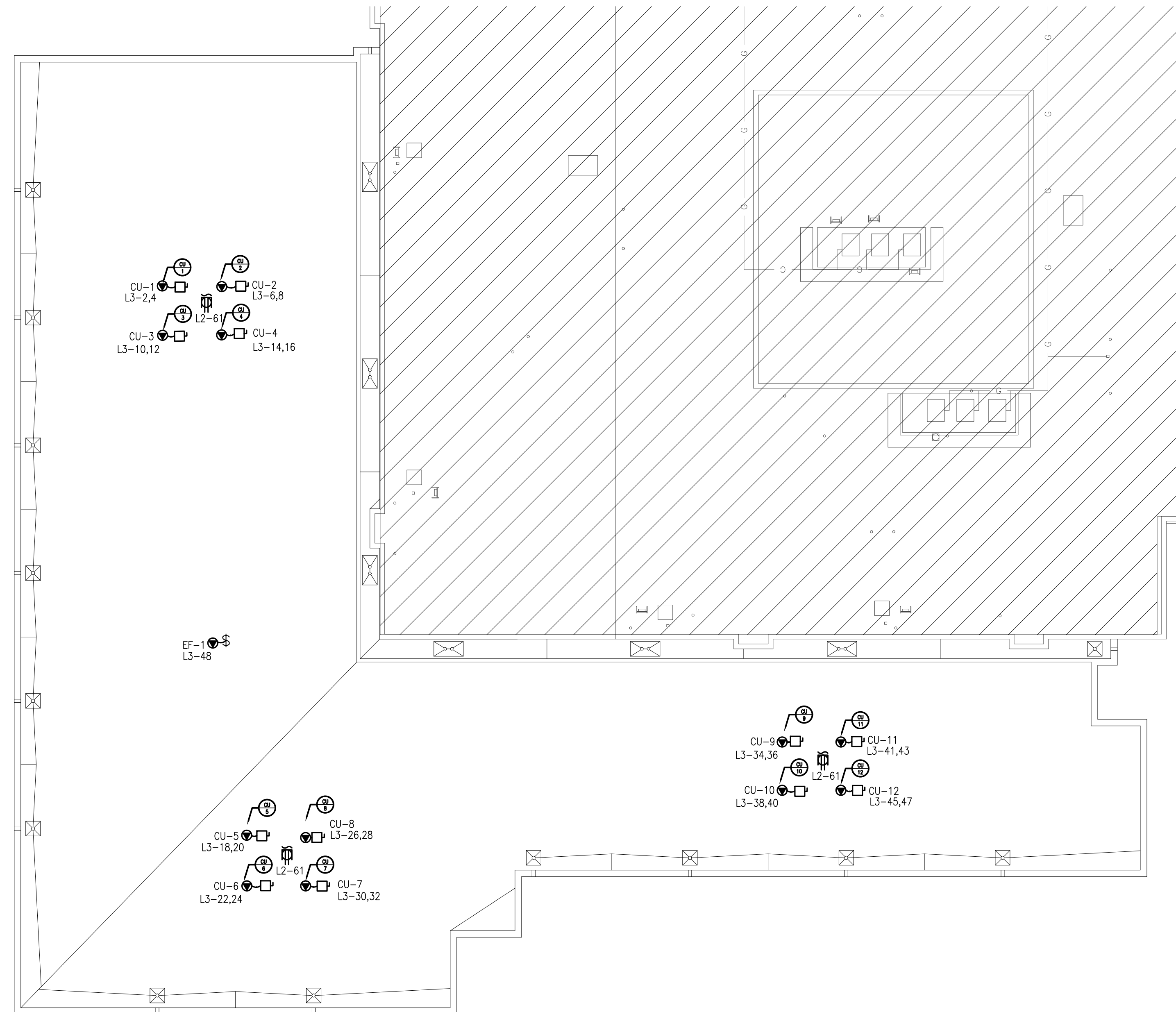
AGP EXPRESSLY RESERVES ITS  
COPYRIGHT AND OTHER PROPERTY  
RIGHTS OF ALL PLANS AND DRAWINGS  
DESIGNED AND/OR PRODUCED. PLANS  
AND DRAWINGS ARE NOT TO BE  
REPRODUCED IN ANY FORM OR MANNER  
WITHOUT THE EXPRESSED WRITTEN  
CONSENT OF AGP.

**ROOF GENERAL NOTES**

1. COORDINATE EXACT LOCATIONS OF DEVICES SHOWN WITH OTHER EQUIPMENT.
2. COORDINATE WITH MECHANICAL CONTRACTOR AND PROVIDE ALL RELAYS, CONNECTIONS, AND ALL DEVICES NECESSARY TO INTERLOCK EXHAUST FANS, DAMPERS, ETC WITH PROPER DEVICES.
3. COORDINATE EXACT LOCATIONS OF MECHANICAL EQUIPMENT WITH MECHANICAL CONTRACTOR.
4. FIRMLY MOUNT WEATHERPROOF 120V CONVENIENCE OUTLET ON UNISTRUT/KINDORF. COORDINATE WITH OTHER TRADES PRIOR TO



NO WORK



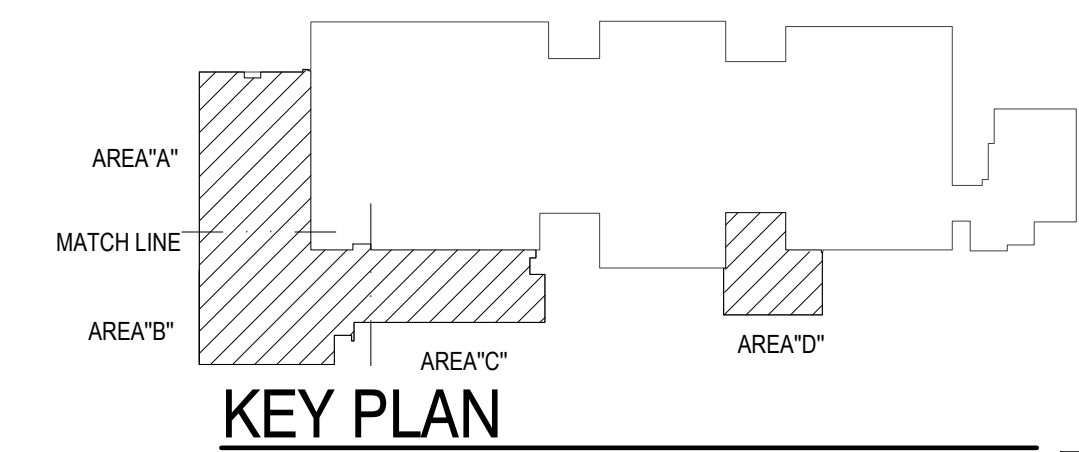
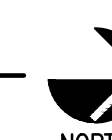
**1** OVERALL POWER PLAN - ROOF AREA A

SCALE: 1/16" = 1'-0"



**1** OVERALL POWER PLAN - ROOF AREA B

SCALE: 1/16" = 1'-0"



**KEY PLAN**



**Salas O'Brien**  
2600 Van Buren St., Suite 2635  
Norman, OK 73072  
Salas O'Brien Registration: CA# 7058  
Expiration Date: 6/30/2025  
Salas O'Brien Project Number: 2023-02792-00