

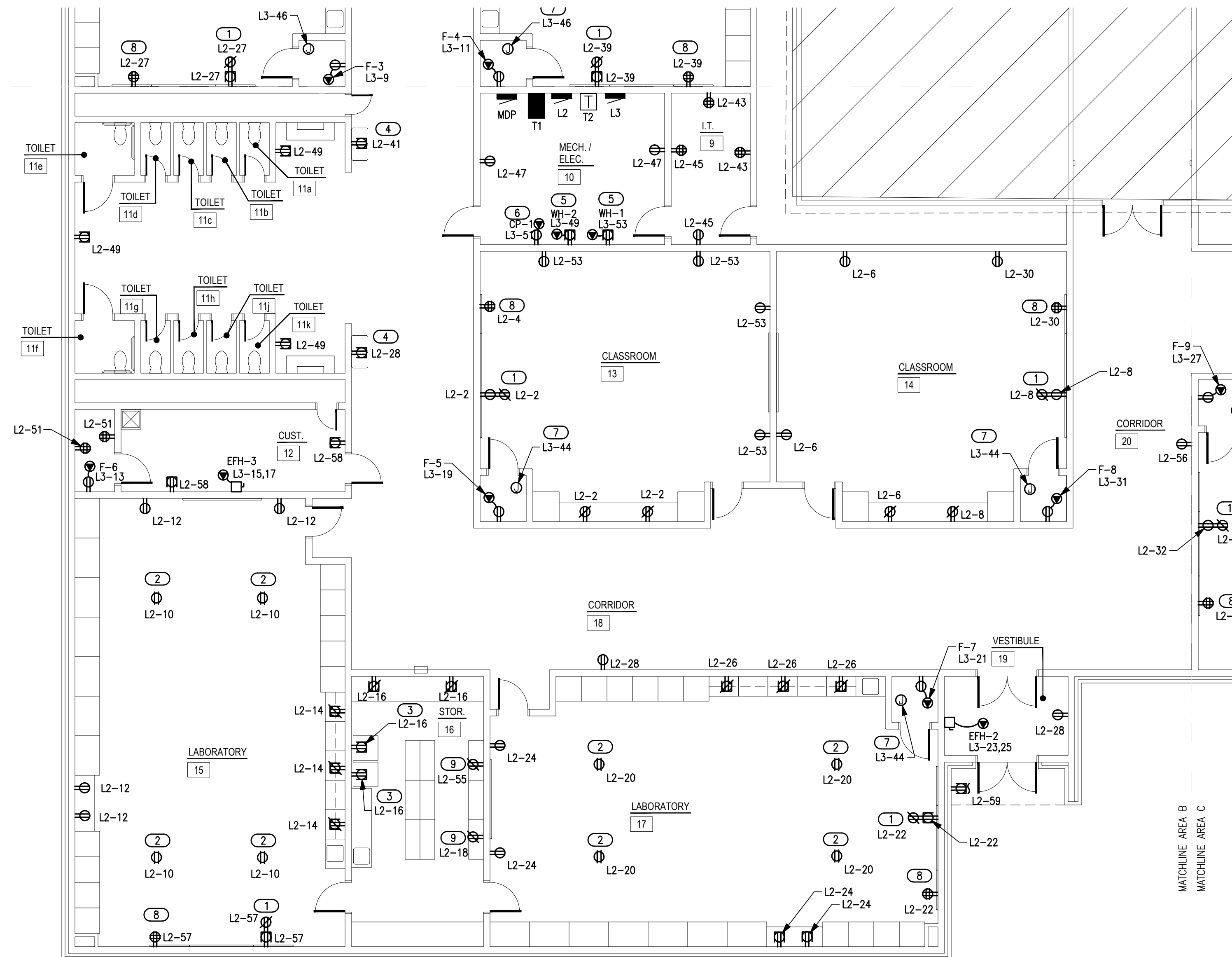
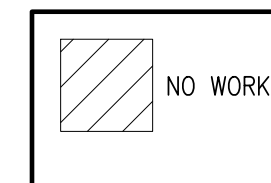


ROOF GENERAL NOTES

- COORDINATE EXACT LOCATIONS OF DEVICES SHOWN WITH OTHER EQUIPMENT.
- COORDINATE WITH MECHANICAL CONTRACTOR AND PROVIDE ALL RELAYS, CONNECTIONS, AND ALL DEVICES NECESSARY TO INTERLOCK EXHAUST FANS, DAMPERS, ETC WITH PROPER DEVICES.
- COORDINATE EXACT LOCATIONS OF MECHANICAL EQUIPMENT WITH MECHANICAL CONTRACTOR.
- ONLY USE THE INFORMATION ON THIS SHEET FOR THE PROJECT.

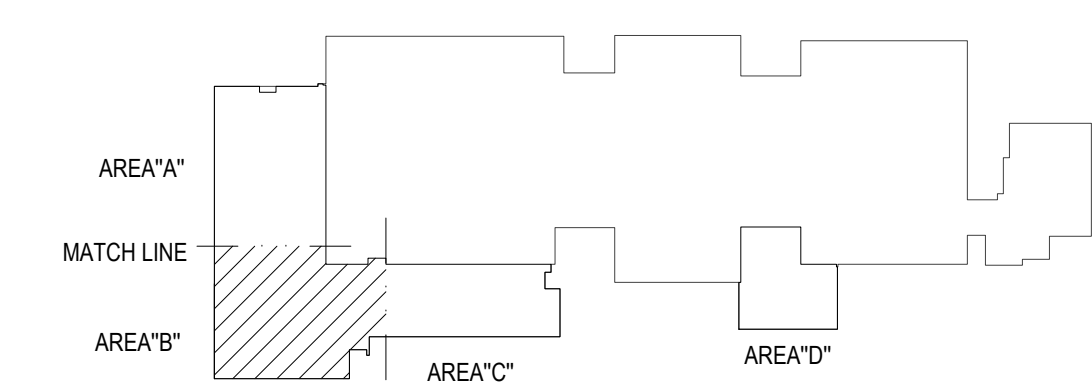
KEYED NOTES

- RECEPTACLE FOR SMART BOARD (BY OWNER) IN A RECESSED BACK BOX. REFER TO DETAIL 'E501/5' FOR ADDITIONAL INFORMATION.
- PROVIDE 120V DROP CORD RECEPTACLE FOR GENERAL USE. COORDINATE FINAL LOCATIONS AND REQUIREMENTS WITH OWNER/ARCHITECT PRIOR TO ROUGH-IN. REFER TO DETAIL 'E501/9' FOR ADDITIONAL INFORMATION.
- PROVIDE 120V RECEPTACLES FOR FRIDGE & FREEZER. COORDINATE FINAL LOCATIONS AND REQUIREMENTS WITH ARCHITECT/OWNER PRIOR TO ROUGH-IN. ADJUST CONNECTION AS REQUIRED FOR A COMPLETE INSTALLATION.
- PROVIDE 120V RECEPTACLE FOR WATER COOLER. COORDINATE EXACT LOCATIONS AND REQUIREMENTS WITH OWNER/ARCHITECT PRIOR TO ROUGH IN.
- PROVIDE 120V RECEPTACLE FOR WATER HEATER. COORDINATE EXACT LOCATIONS AND REQUIREMENTS WITH PLUMBING CONTRACTOR PRIOR TO ROUGH-IN.
- PROVIDE 120V CONNECTION FOR CIRCULATION PUMP. CP-1 SHALL SERVE BOTH WH-1 & WH-2. COORDINATE EXACT LOCATION AND REQUIREMENTS WITH PLUMBING CONTRACTOR PRIOR TO ROUGH-IN.
- PROVIDE 120V CONNECTION FOR TRAP PRIMER LOCATED ON WALL 4'-0" AFF. COORDINATE EXACT LOCATION AND REQUIREMENTS WITH PLUMBING CONTRACTOR PRIOR TO ROUGH-IN.
- APPROXIMATE LOCATION OF TEACHERS DESK. COORDINATE FINAL LOCATION AND REQUIREMENTS WITH OWNER/ARCHITECT PRIOR TO ROUGH-IN. REFER TO DETAIL 'E501/5' FOR ADDITIONAL INFORMATION.
- PROVIDE DEDICATED CIRCUIT CONNECTION FOR 3D PRINTER. COORDINATE EXACT LOCATION AND REQUIREMENTS WITH OWNER/ARCHITECT PRIOR TO ROUGH-IN.



1 ELECTRICAL POWER PLAN - AREA B

SCALE: 1/8" = 1'-0"



KEY PLAN



Salas O'Brien
2600 Van Buren St., Suite 2635
Norman, OK 73072
Salas O'Brien Registration: CA# 7058
Expiration Date: 6/30/2025
Salas O'Brien Project Number: 2023-02792-00

OWNERSHIP USE OF DOCUMENTS:
AGP EXPRESSLY RESERVES ITS COPYRIGHT AND OTHER PROPERTY RIGHTS OF ALL PLANS AND DRAWINGS DESIGNED AND/OR PRODUCED. PLANS AND DRAWINGS ARE NOT TO BE REPRODUCED IN ANY FORM OR MANNER WITHOUT THE EXPRESSED WRITTEN CONSENT OF AGP.