

- LIGHTING GENERAL NOTES**
- OCCUPANCY SENSOR LOCATIONS SHOWN ARE FOR DESIGN INTENT ONLY. LOCATE OCCUPANCY SENSORS PER MANUFACTURER'S WRITTEN INSTALLATION INSTRUCTIONS.
 - COORDINATE EXACT LOCATIONS AND MOUNTING HEIGHTS OF LIGHT FIXTURES WITH HVAC EQUIPMENT AND OTHER DEVICES/EQUIPMENT.
 - COORDINATE LIGHT SWITCHES WITH THERMOSTATS AND OTHER WALL MOUNTED DEVICES.
 - PROVIDE RELAY CONTACTOR FOR EXTERIOR LIGHTING. RELAY SHALL INTERLOCK WITH THE NEAREST EXISTING LIGHTING CIRCUIT SUCH THAT THE EXISTING LIGHTING CONTROL SHALL CONTROL THE NEW EXTERIOR LIGHTING.

AGP
the Abla Griffin
Partnership L.L.C.

201 N. BROADWAY
SUITE 210
MOORE, OK. 73160
405.735.3477
AGP@theAGP.net
www.theAGP.net

CEDAR CREEK
CIVIL

KFC ENGINEERING
STRUCTURAL

SALAS O'BRIEN
MECHANICAL / ELECTRICAL

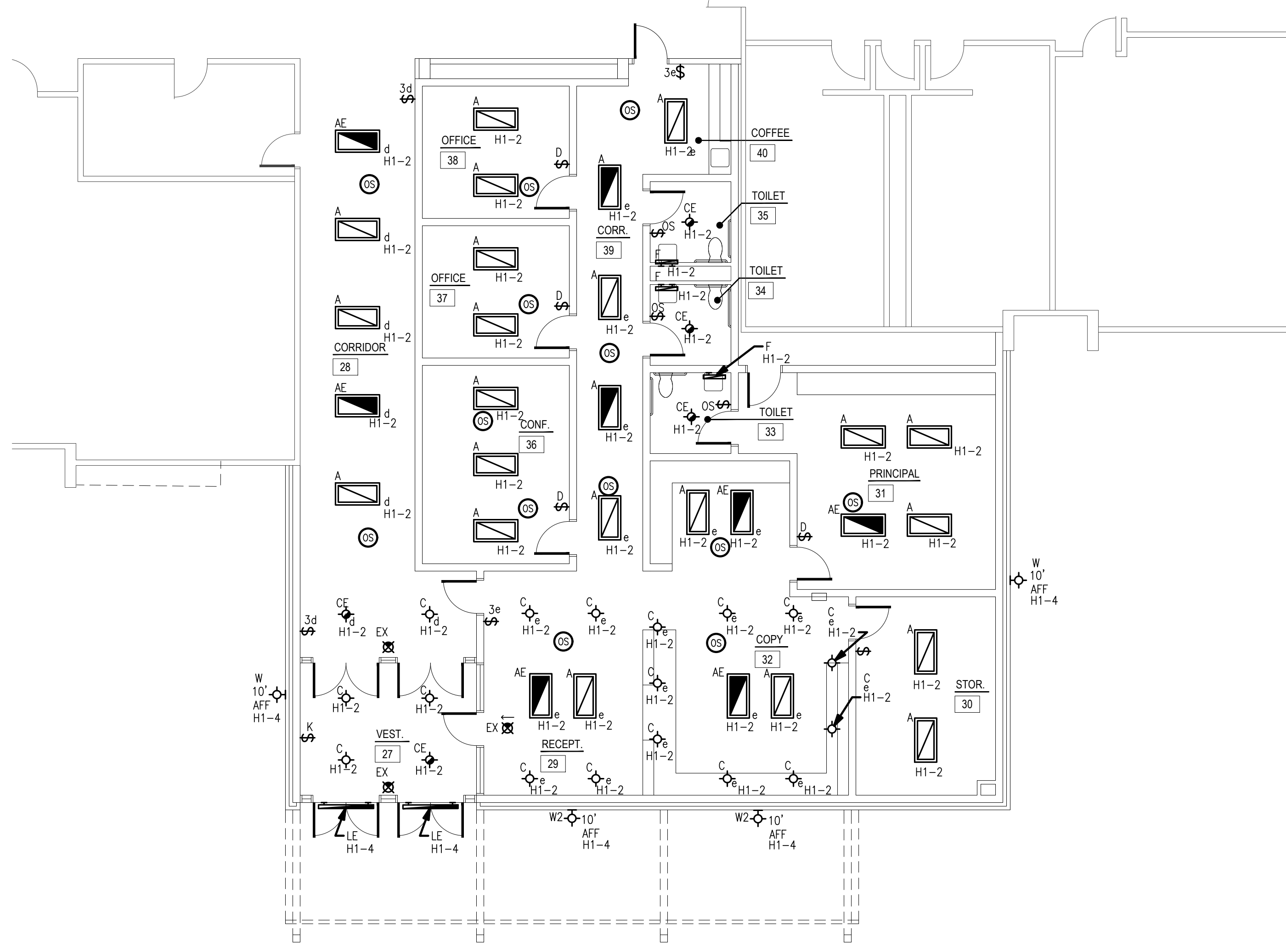


GT
drawn by

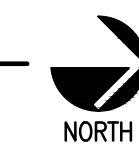
TVO
checked by

JULY 2023
date

revisions



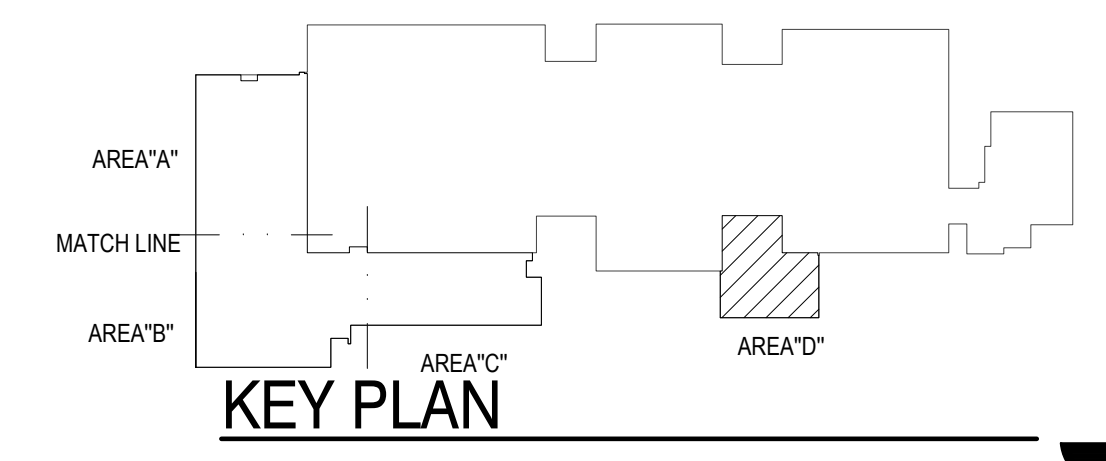
1 ELECTRICAL LIGHTING PLAN - AREA D
SCALE: 1/8" = 1'-0"



MOORE PUBLIC SCHOOLS
BOARD OF EDUCATION
MOORE, OKLAHOMA



CLASSROOM ADDITION
HIGHLAND WEST
JUNIOR HIGH SCHOOL



sheet no:
E104

Salas O'Brien

2600 Van Buren St., Suite 2635
Norman, OK 73072
Salas O'Brien Registration: CA# 7058
Expiration Date: 6/30/2025
Salas O'Brien Project Number: 2023-02792-00

OWNERSHIP USE OF DOCUMENTS:
AGP EXPRESSLY RESERVES ITS
COPYRIGHT AND OTHER PROPERTY
RIGHTS OF ALL PLANS AND DRAWINGS
DESIGNED AND/OR PRODUCED. PLANS
AND DRAWINGS ARE NOT TO BE
REPRODUCED IN ANY FORM OR MANNER
WITHOUT THE EXPRESSED WRITTEN
CONSENT OF AGP.