



GT

drawn by

TVO

checked by

JULY 2023

date

revisions

MOORE PUBLIC SCHOOLS  
BOARD OF EDUCATION  
MOORE, OKLAHOMA



MOORE Public Schools  
LEARNING FOR LIFE

CLASSROOM ADDITION  
HIGHLAND WEST  
JUNIOR HIGH SCHOOL

sheet no:

## E002

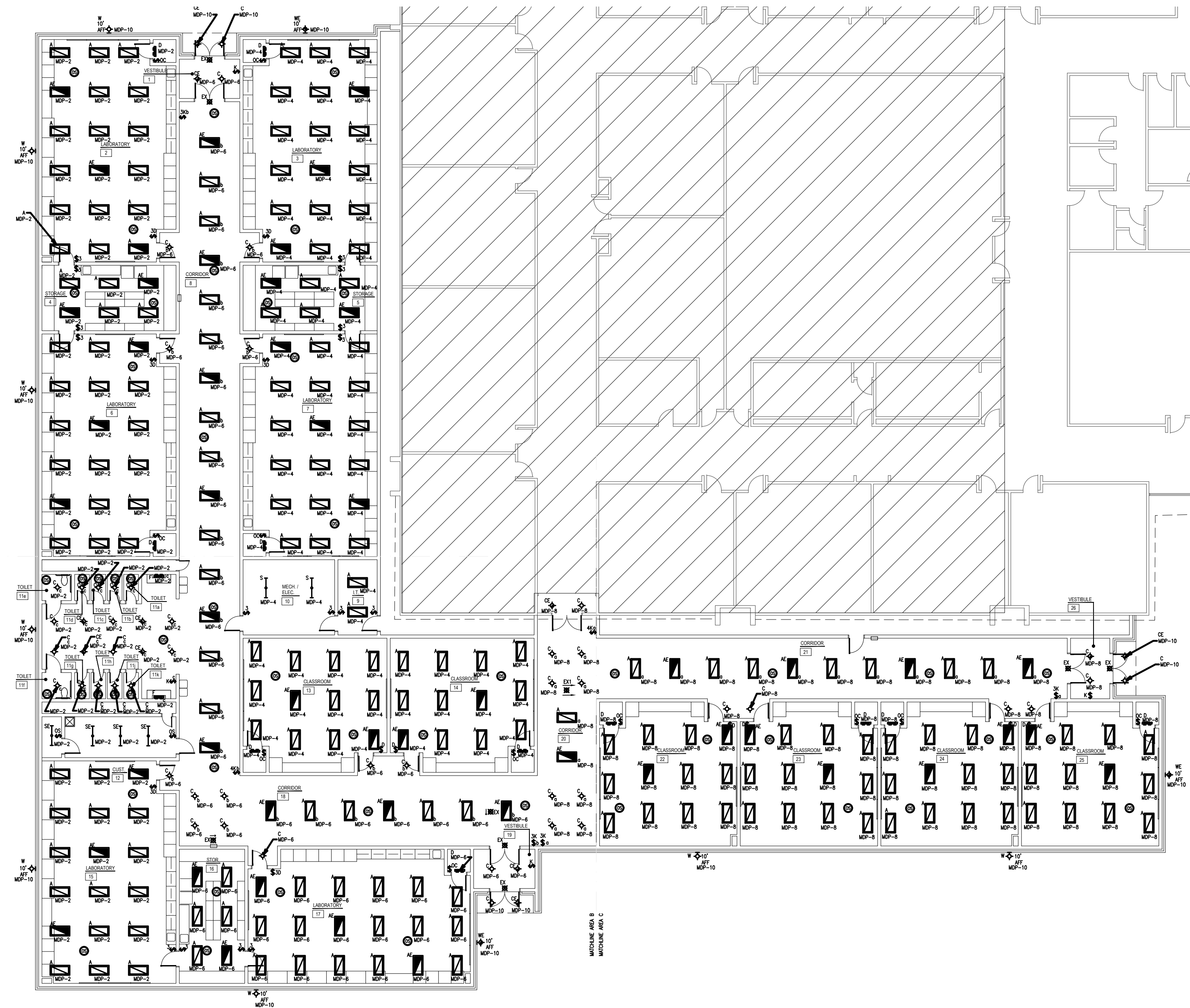
OWNERSHIP USE OF DOCUMENTS:

AGP EXPRESSLY RESERVES ITS  
COPYRIGHT AND OTHER PROPERTY  
RIGHTS OF ALL PLANS AND DRAWINGS  
DESIGNED AND/OR PRODUCED. PLANS  
AND DRAWINGS ARE NOT TO BE  
REPRODUCED IN ANY FORM OR MANNER  
WITHOUT THE EXPRESSED WRITTEN  
CONSENT OF AGP.

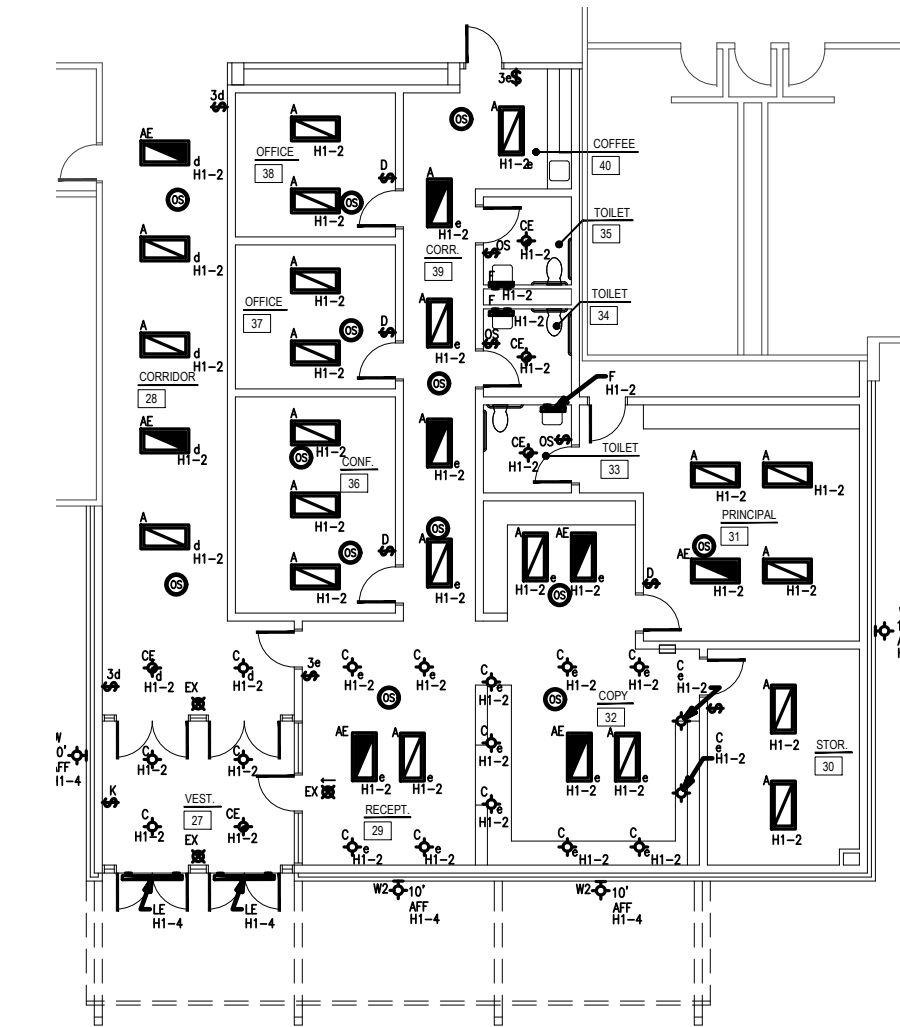
### LIGHTING GENERAL NOTES

- OCCUPANCY SENSOR LOCATIONS SHOWN ARE FOR DESIGN INTENT ONLY. LOCATE OCCUPANCY SENSORS PER MANUFACTURER'S WRITTEN INSTALLATION INSTRUCTIONS.
- COORDINATE EXACT LOCATIONS AND MOUNTING HEIGHTS OF LIGHT FIXTURES WITH HVAC EQUIPMENT AND OTHER DEVICES/EQUIPMENT.
- COORDINATE LIGHT SWITCHES WITH THERMOSTATS AND OTHER WALL MOUNTED DEVICES.
- PROVIDE RELAY CONTACTOR FOR EXTERIOR LIGHTING. RELAY SHALL INTERLOCK WITH THE NEAREST EXISTING LIGHTING CIRCUIT SUCH THAT THE EXISTING LIGHTING CONTROL SHALL CONTROL THE NEW EXTERIOR LIGHTING.

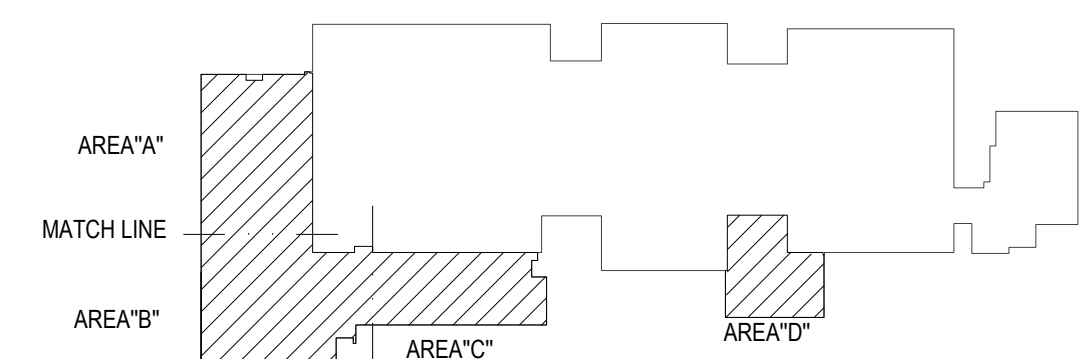
NO WORK



**1** OVERALL LIGHTING PLAN- CLASSROOM AREA  
SCALE: 1/16" = 1'-0"



**1** OVERALL LIGHTING PLAN OFFICE AREA  
SCALE: 1/16" = 1'-0"



KEY PLAN



2600 Van Buren St., Suite 2635  
Norman, OK 73072  
Salas O'Brien Registration: CA# 7058  
Expiration Date: 6/30/2025  
Salas O'Brien Project Number: 2023-02792-00