



CS  
drawn by \_\_\_\_\_  
MA  
checked by \_\_\_\_\_  
date JULY 2023  
revisions \_\_\_\_\_

MOORE PUBLIC SCHOOLS  
BOARD OF EDUCATION  
MOORE, OKLAHOMA

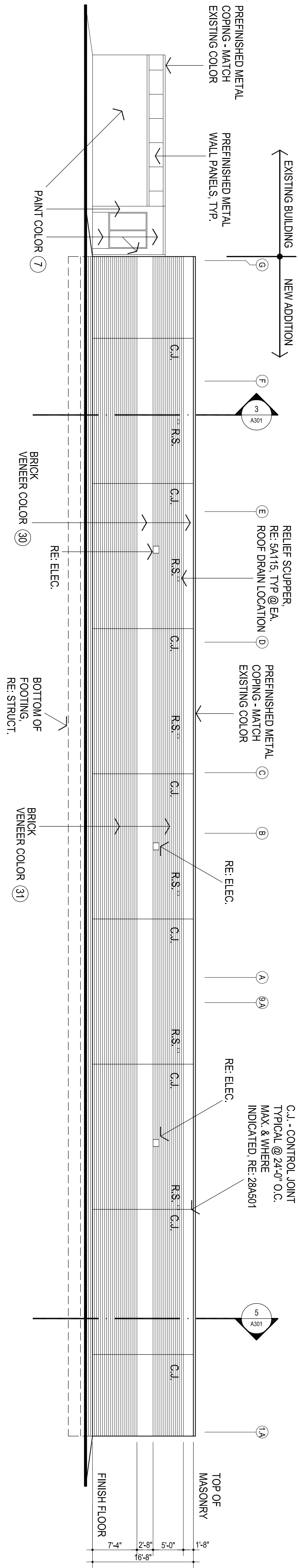
MOORE Public Schools  
LEARNING FOR LIFE

CLASSROOM ADDITION  
HIGH AND WEST  
JUNIOR HIGH SCHOOL

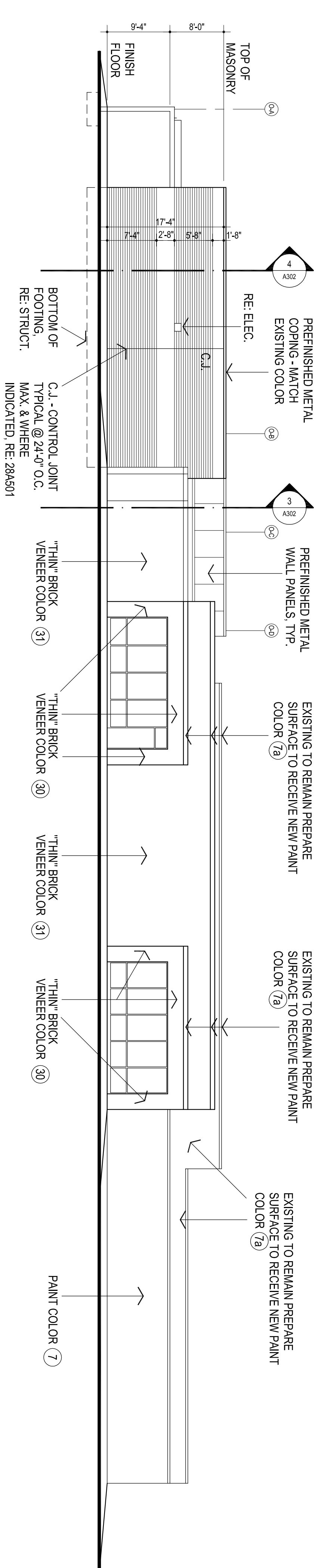
Sheet No.

**A202a**

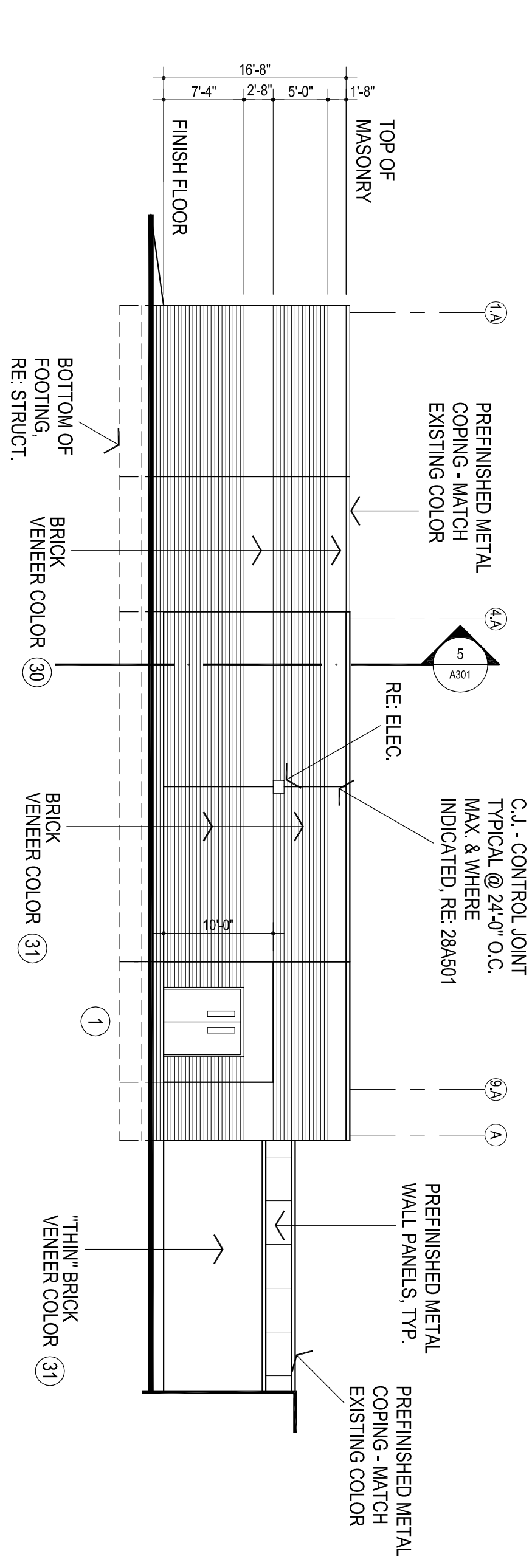
ELEVATIONS  
OWNERSHIP USE OF DOCUMENTS:  
AGP EXPRESSLY RESERVES ITS  
COPYRIGHT AND OTHER PROPERTY  
RIGHTS OF ALL PLANS AND DRAWINGS  
DESIGNED AND/OR PRODUCED BY  
AGP AND/OR ITS SUBSIDIARIES AND  
REPRODUCED IN ANY FORM OR MANNER  
WITHOUT THE EXPRESSED WRITTEN  
CONSENT OF AGP.



**1**  
SOUTH ELEVATION  
3/32" = 1'-0"



**2**  
NORTH ELEVATION - OFFICE  
3/32" = 1'-0"



**3**  
NORTH ELEVATION - CLASSROOM  
3/32" = 1'-0"