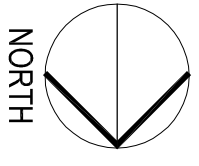
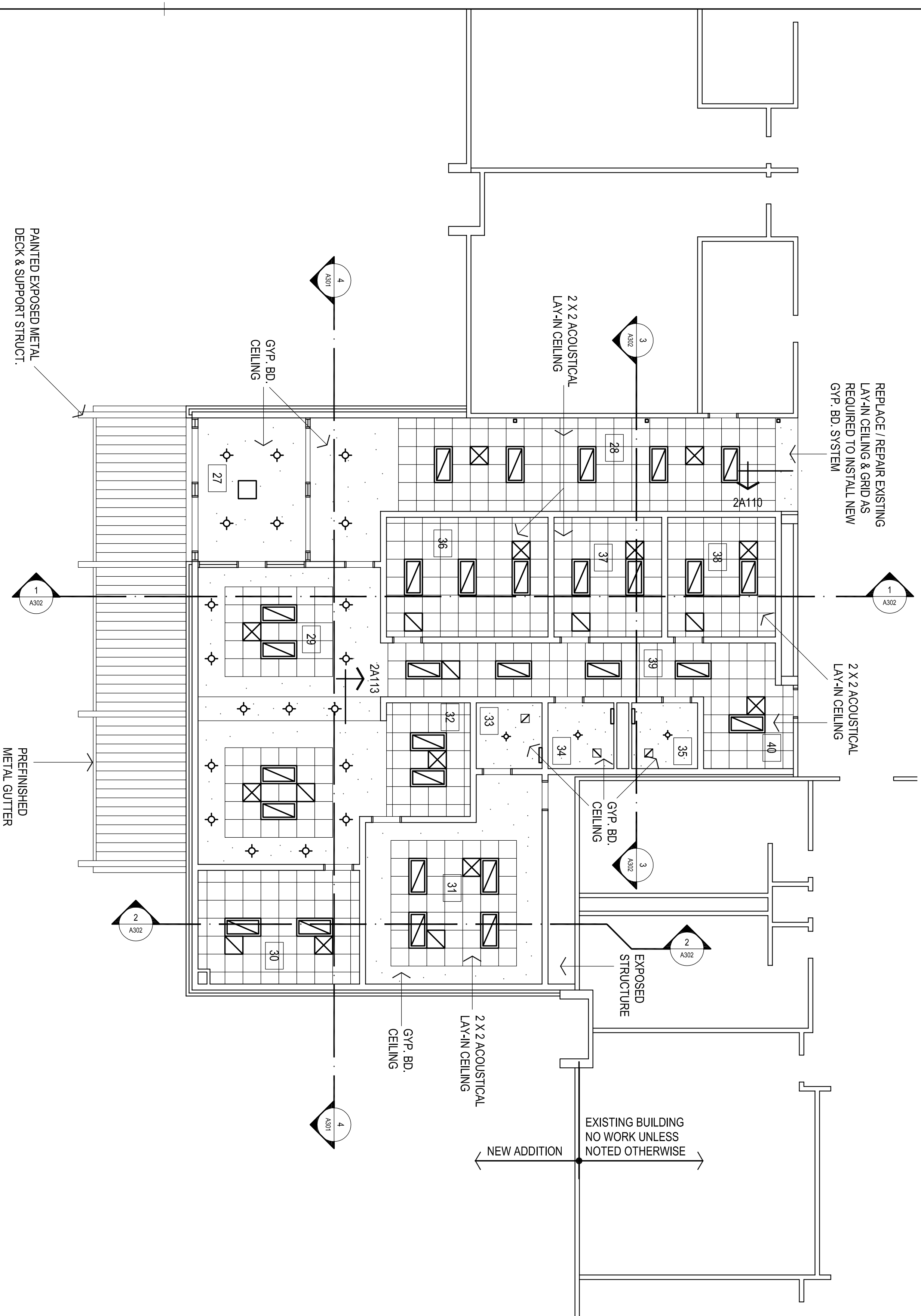




CC  
drawn by \_\_\_\_\_  
MA  
checked by \_\_\_\_\_  
JULY 2023  
date \_\_\_\_\_  
revisions \_\_\_\_\_



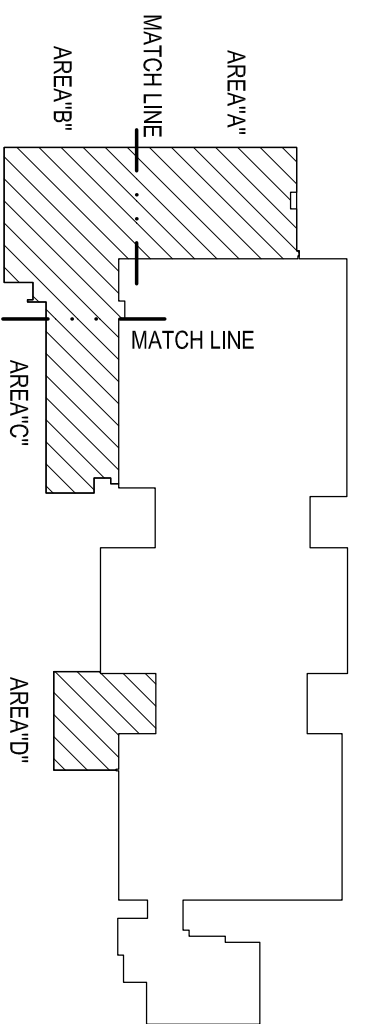
**1**  
REFLECTED CEILING PLAN - AREA "D"  
1/8" = 1'-0"

**LEGEND:**

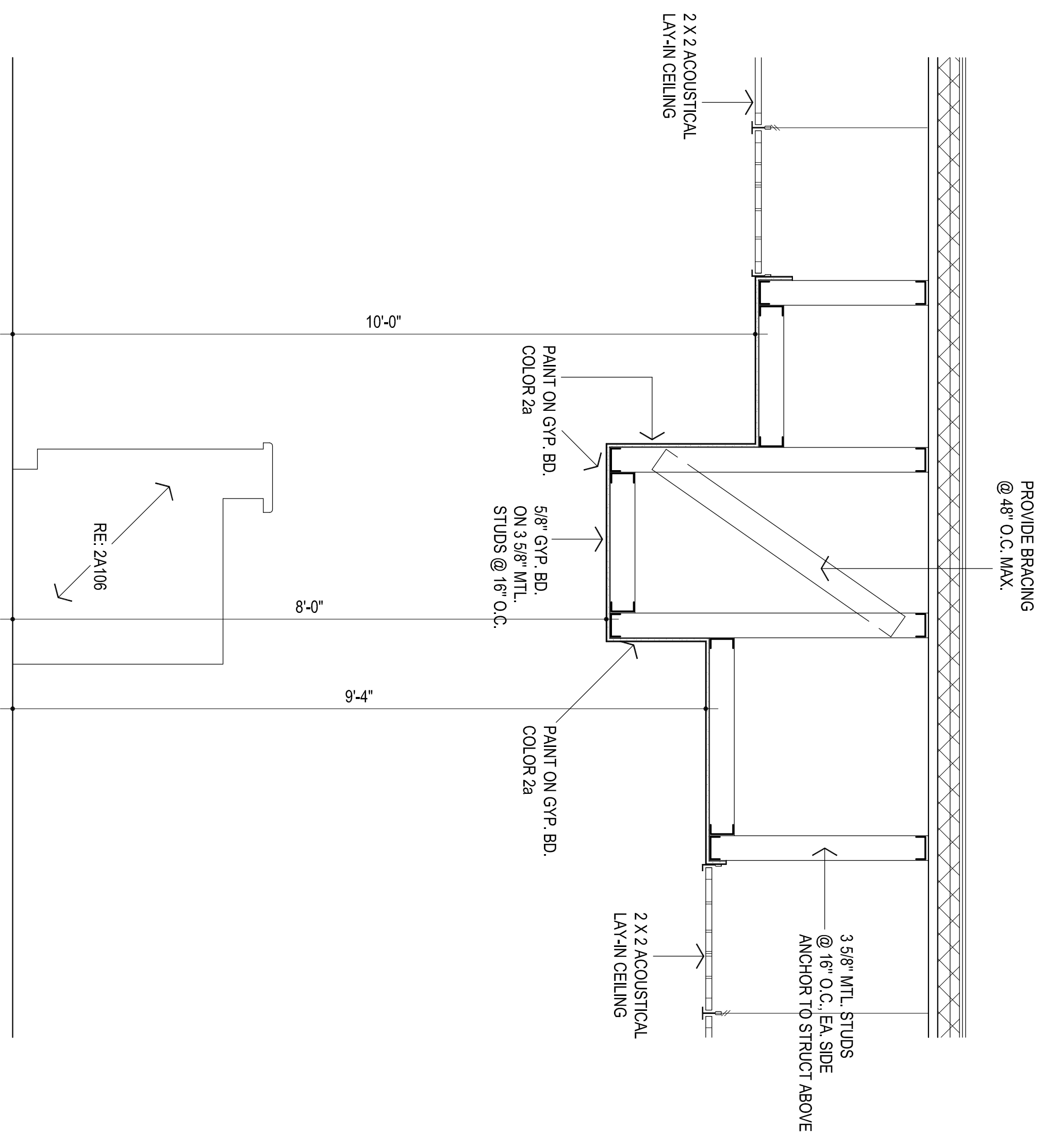
- ☒ MECHANICAL OPENINGS
- ELECTRICAL FIXTURES
- ⊙ CEILING MOUNTED SMOKE DETECTOR. RE: ELEC

**NOTES:**

1. REFER MECHANICAL & ELECTRICAL FOR ANY ADDITIONAL CEILING MOUNTED FIXTURES
2. REFER TO SHEET A100 FOR LOCATIONS OF FIRE-RATED WALLS
3. EXISTING SOFFIT TO REMAIN PROVIDE NEW SOFFIT MATERIALS, TRIM, ETC FOR COMPLETE INSTALLATION. SALVAGE EXISTING SOFFIT TO BE REMOVED AS PRACTICAL FOR REUSE.



**KEY PLAN**



**2**  
SECTION  
3/4" = 1'-0"