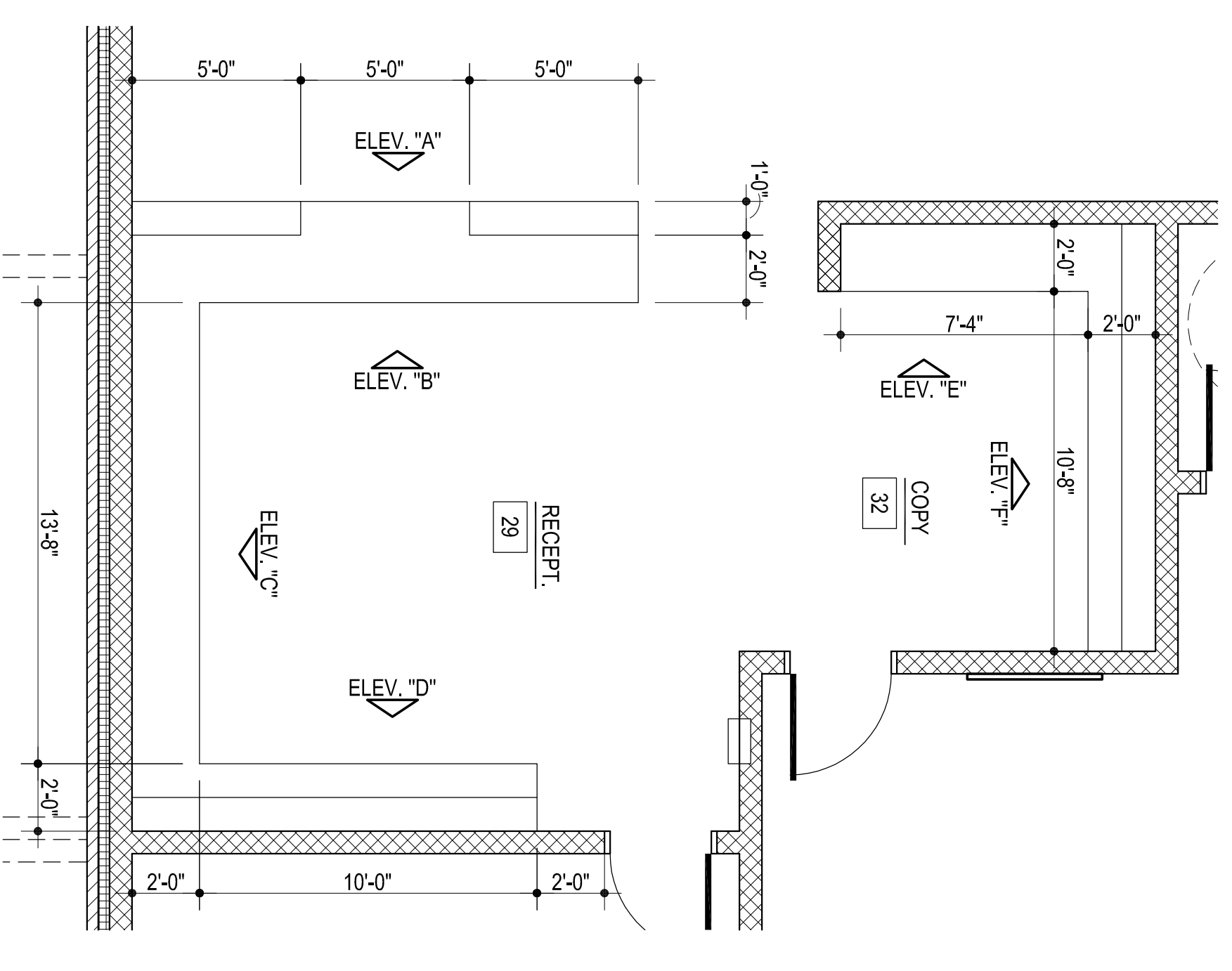
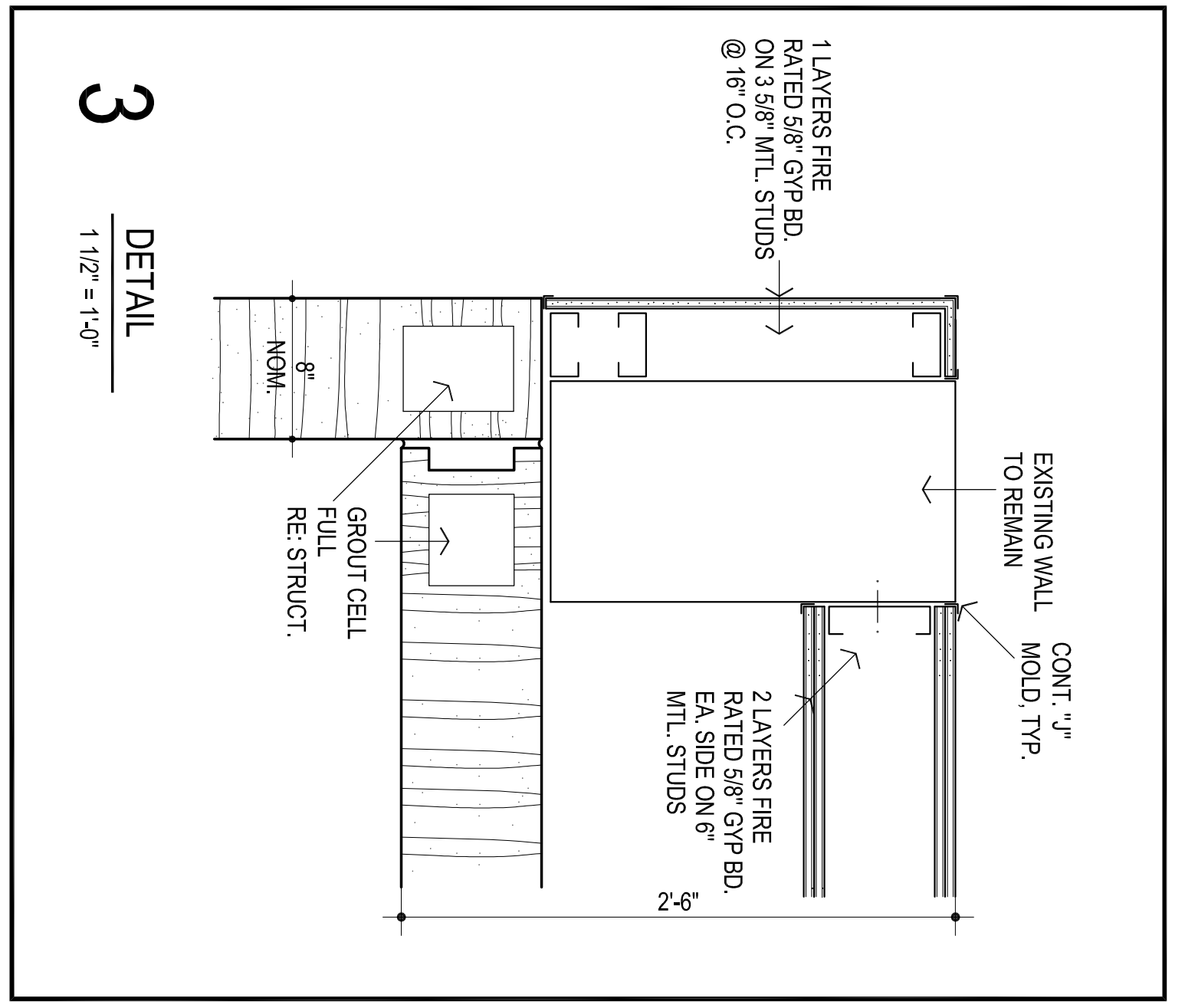
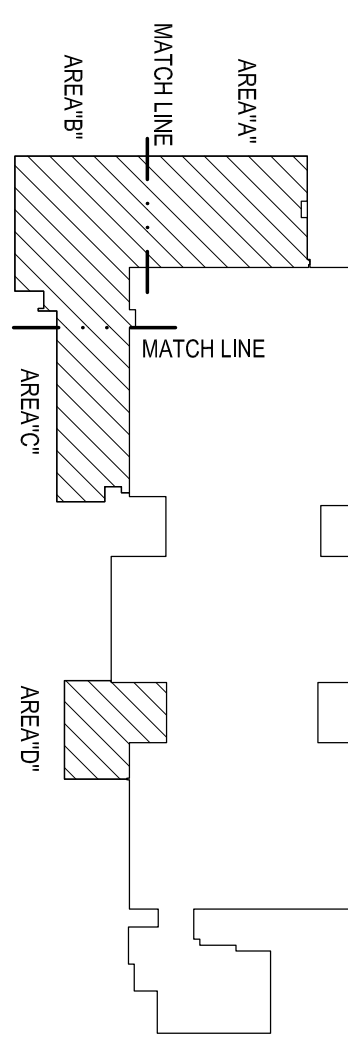
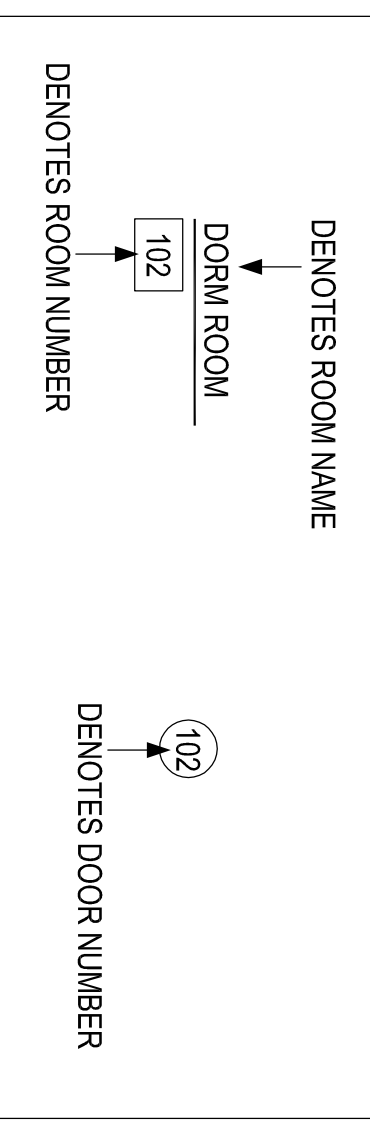
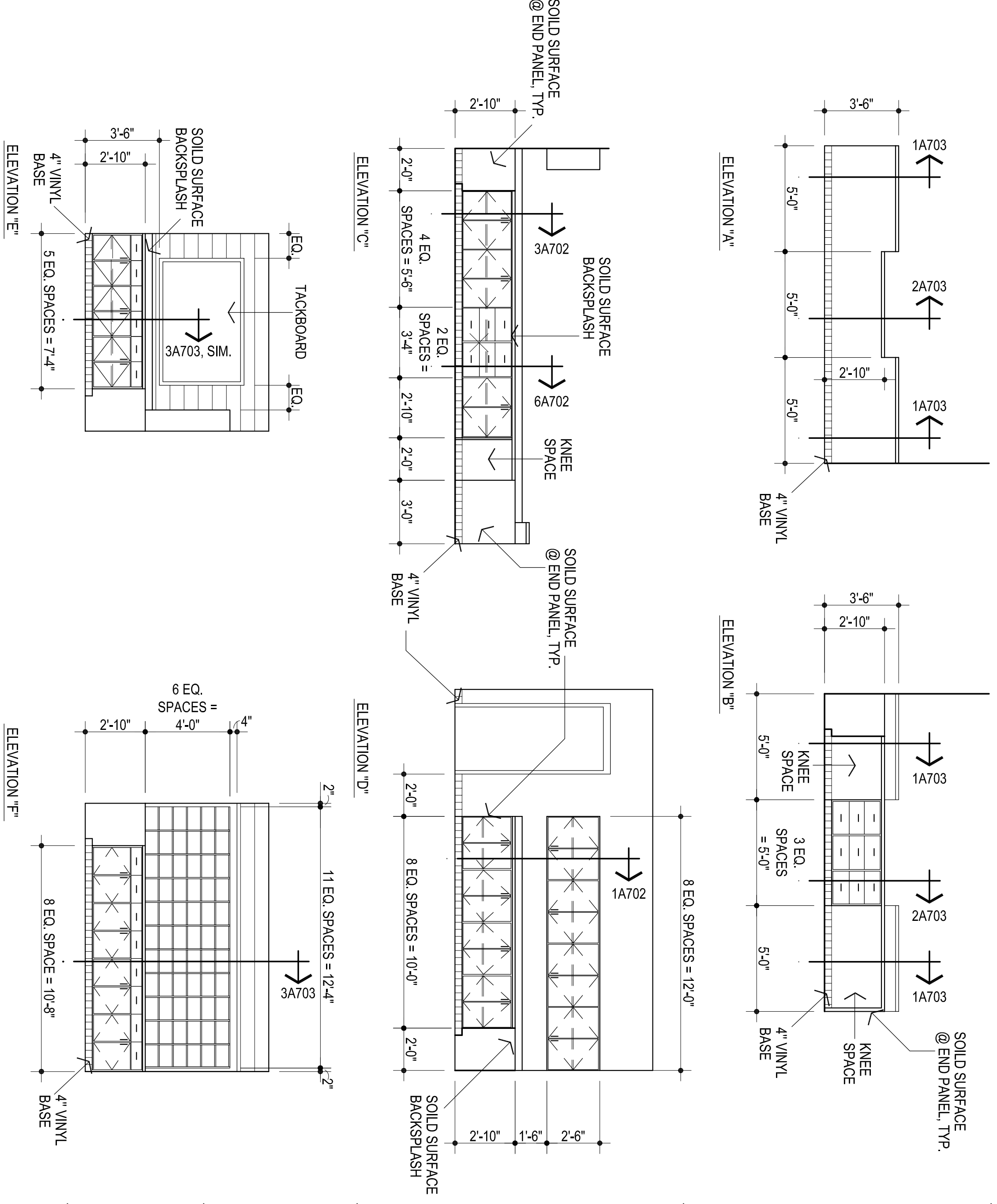


**FLOOR PLAN - AREA "D"**  
 1/8" = 1'-0"  
 3,825 sq. ft.

- MISCELLANEOUS NOTES:
1. F.E.C. - FIRE EXTINGUISHER AND CABINET
  2. REFER A116, A117, A118 & A119 FOR FLOORING FINISH LAYOUT
  3. PROVIDE BULLDOSE @ ALL EXPOSED CMU CORNERS & ENDS (b.n.)



**2** MILLWORK ROOM # 32  
 1/4" = 1'-0"



**AGP**  
 the Abila Griffin  
 Partnership L.L.C.  
 201 N. BROADWAY  
 SUITE 210  
 MOORE, OK. 73160  
 405.735.3477  
 AGP@theAGP.net  
 www.theAGP.net

CEDAR CREEK  
 CIVIL  
 KFC ENGINEERING  
 STRUCTURAL  
 SALAS O'BRIEN  
 MECHANICAL/ELECTRICAL

CG  
 drawn by  
 MA  
 checked by  
 JULY 2023  
 6489  
 revisions

MOORE PUBLIC SCHOOLS  
 BOARD OF EDUCATION  
 MOORE, OKLAHOMA

**MOORE** Public Schools  
 LEARNING FOR THE FUTURE

CLASSROOM ADDITION  
 HIGHLAND WEST  
 JUNIOR HIGH SCHOOL

OVERALL FLOOR PLAN  
**A106**

AGP EXPRESSLY RESERVES ITS RIGHTS OF ALL PLANS AND DRAWINGS DESIGNED AND/OR PRODUCED. PLANS AND DRAWINGS ARE NOT TO BE REPRODUCED IN ANY FORM OR MANNER WITHOUT THE EXPRESSED WRITTEN CONSENT OF AGP.