

CJC
drawn by
BWB
checked by
JULY 2023
date
revisions
CB-02 11/29/2023

MOORE PUBLIC SCHOOLS
BOARD OF EDUCATION
MOORE, OKLAHOMA



CLASSROOM ADDITION
HIGHLAND WEST
JUNIOR HIGH SCHOOL

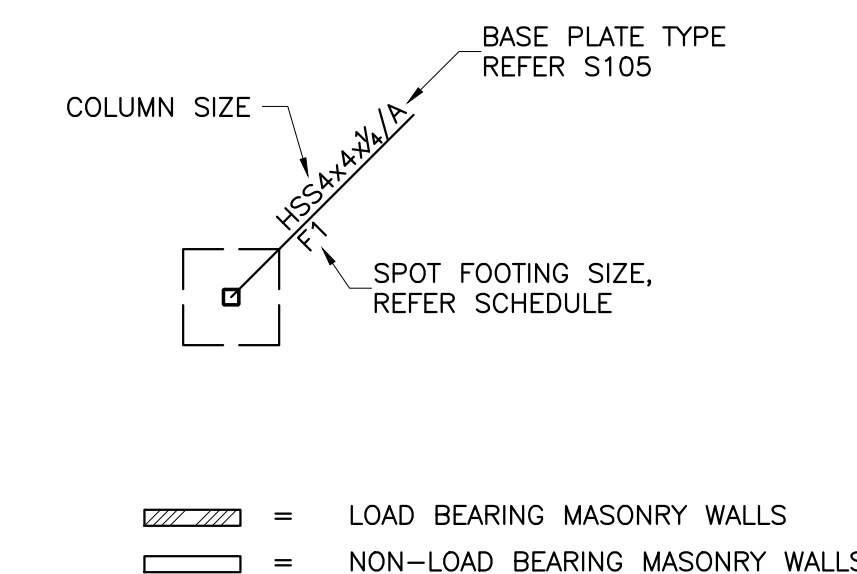
sheet no:

S204

OWNERSHIP USE OF DOCUMENTS:

AGP EXPRESSLY RESERVES ITS
COPYRIGHT AND OTHER PROPERTY
RIGHTS OF ALL PLANS AND DRAWINGS
DESIGNED AND/OR PRODUCED. PLANS
AND DRAWINGS ARE NOT TO BE
REPRODUCED IN ANY FORM OR MANNER
WITHOUT THE EXPRESSED WRITTEN
CONSENT OF AGP.

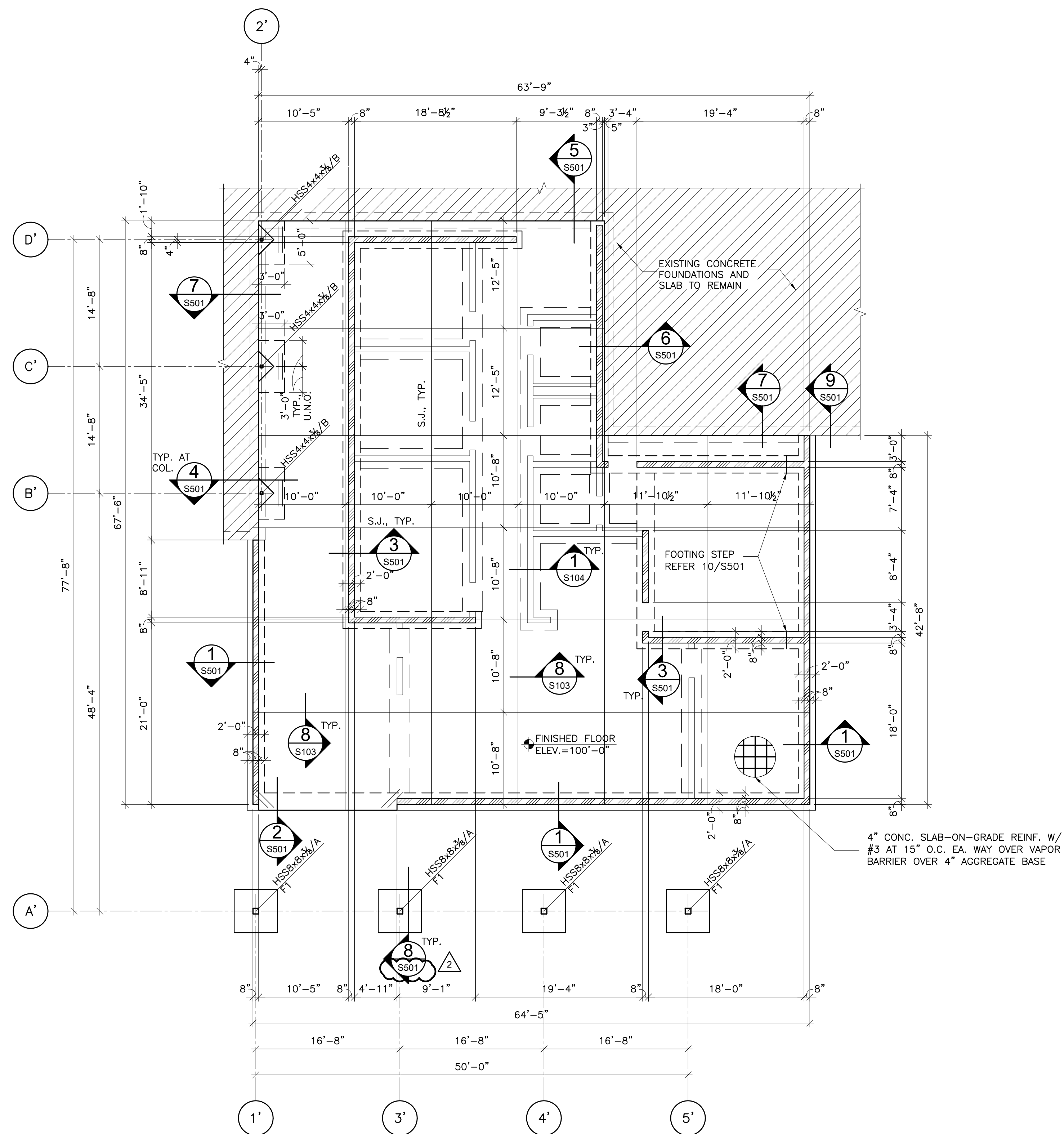
FOUNDATION PLAN LEGEND:



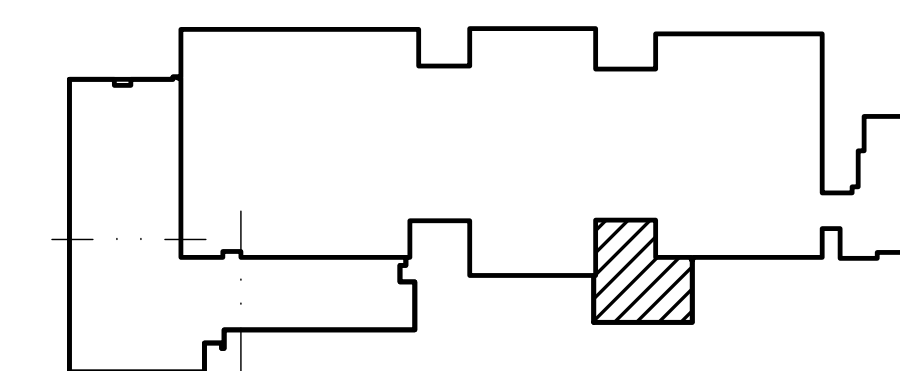
FOUNDATION PLAN NOTES:

- FOUNDATION AND SLAB SUBGRADE SHALL BE PREPARED AS OUTLINED IN THE STRUCTURAL GENERAL NOTES.
- REFERENCE ELEVATION OF 100'-0" EQUALS DATUM FINISHED FLOOR ELEVATION OF 1249.38 FEET FOR THE NEW BUILDING.
- EXCEPT WHERE SHOWN OTHERWISE, SLABS-ON-GRADE SHALL BE 4" THICK CONCRETE REINFORCED WITH #3 BARS AT 15" ON CENTER EACH WAY OVER A 15 MIL VAPOR RETARDER OVER A 4" AGGREGATE BASE COURSE. REINFORCING BARS SHALL BE PLACED 1 1/2" CLEAR FROM TOP OF SLAB USING CHAIRS OR SLAB BOLSTERS COMPLYING WITH CRSI'S "MANUAL OF STANDARD PRACTICE".
- SLABS-ON-GRADE SHALL BE WATER CURED FOR A MINIMUM OF 7 DAYS BY PONDING, SPRAYING, SPRINKLING OR BY USE OF SATURATED COVERINGS. THE USE OF CURING COMPOUNDS FOR SLABS-ON-GRADE IS PROHIBITED.
- SAWED JOINTS (SJ) AND REQUIRED CONSTRUCTION JOINTS (CJ) ARE SHOWN ON THE DRAWINGS. AT THE CONTRACTOR'S OPTION, ADDITIONAL CONSTRUCTION JOINTS MAY BE PLACED AT LOCATIONS INDICATED TO BE SAWED JOINTS.
- // INDICATES (2)#4 BARSx4'-0" TO BE PLACED IN SLAB-ON-GRADE AT ALL RE-ENTRANT CORNERS. RE-ENTRANT CORNERS ARE DEFINED AS INTERIOR CORNERS WHERE JOINTS DO NOT OCCUR IN BOTH DIRECTIONS. SIMILAR BARS SHALL BE PLACED AT ANY DISCONTINUOUS ENDS OF SAWED JOINTS OR CONSTRUCTION JOINTS.
- REFER MECHANICAL FOR FLOOR DRAIN (F.D.) INFORMATION.

MARK	SIZE			REINFORCEMENT
	WIDTH	LENGTH	DEPTH	
F1	5'-0"	5'-0"	2'-0"	(6) #5 TOP AND BOT. EA. WAY



1 FOUNDATION PLAN AREA D
S204 SCALE: 1/8"=1'-0"



KEY PLAN





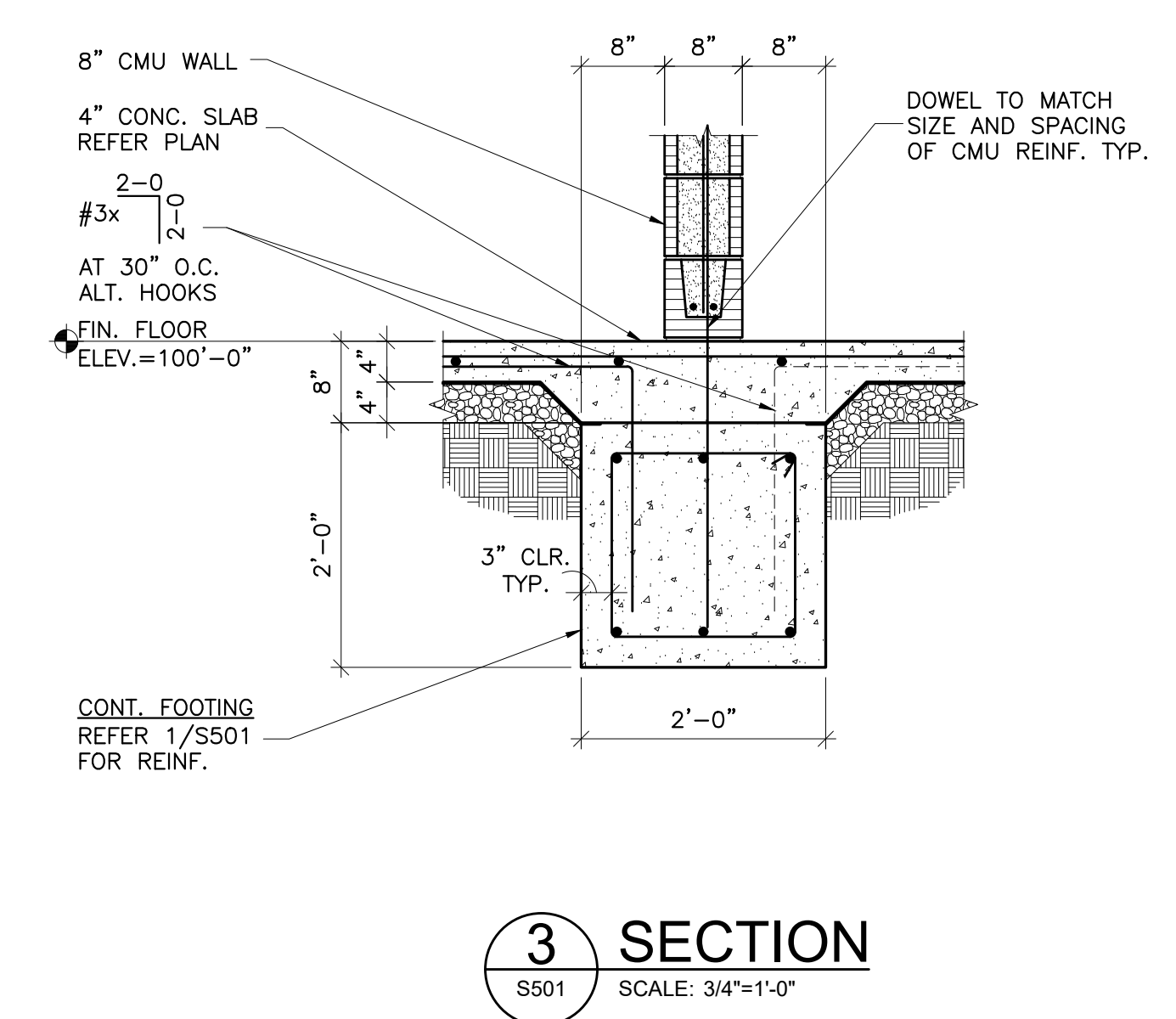
CJC	drawn by
BWB	checked by
JULY 2023	date
	revisions
△ CB-02	11/29/2023



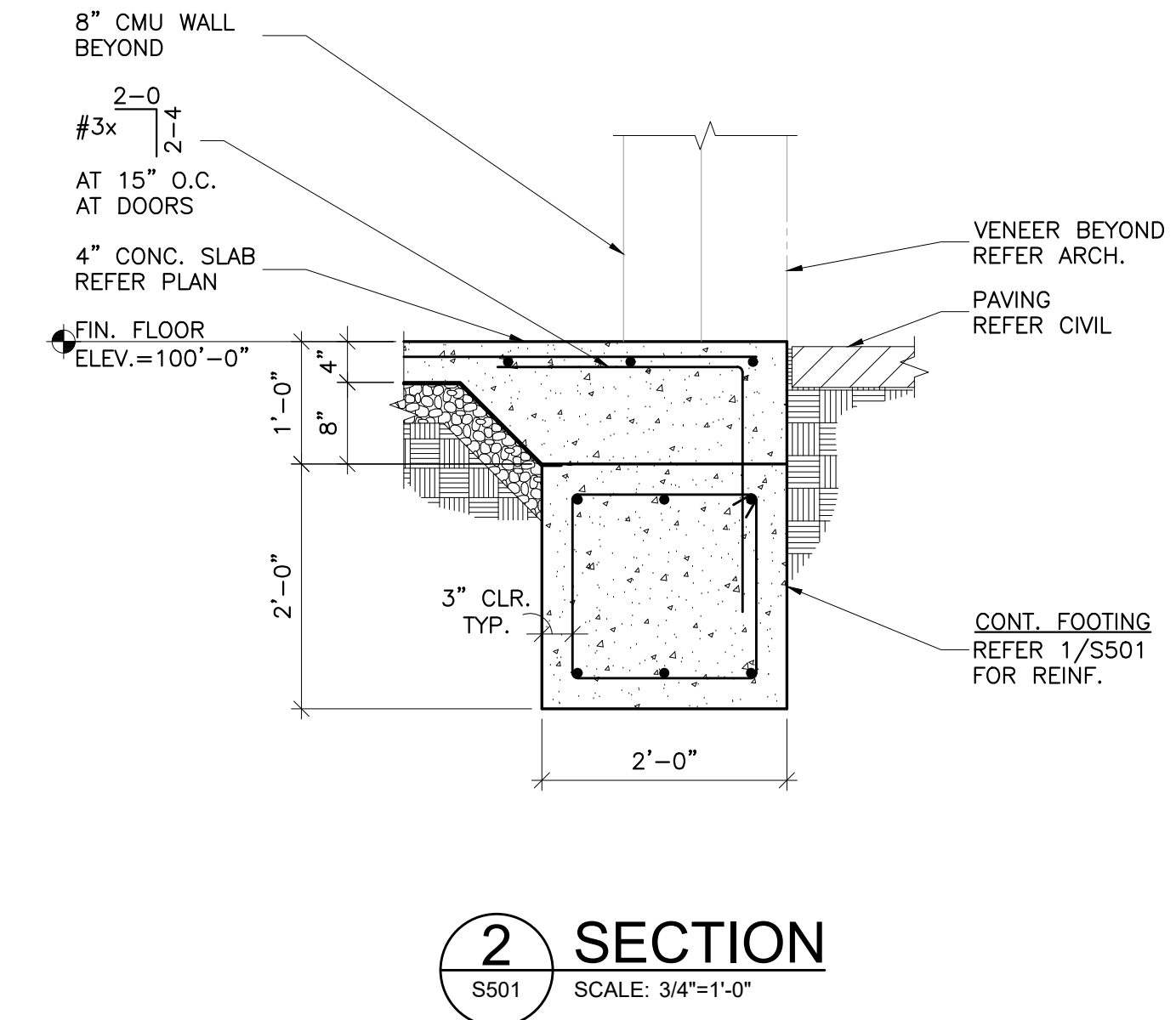
sheet no:

S501

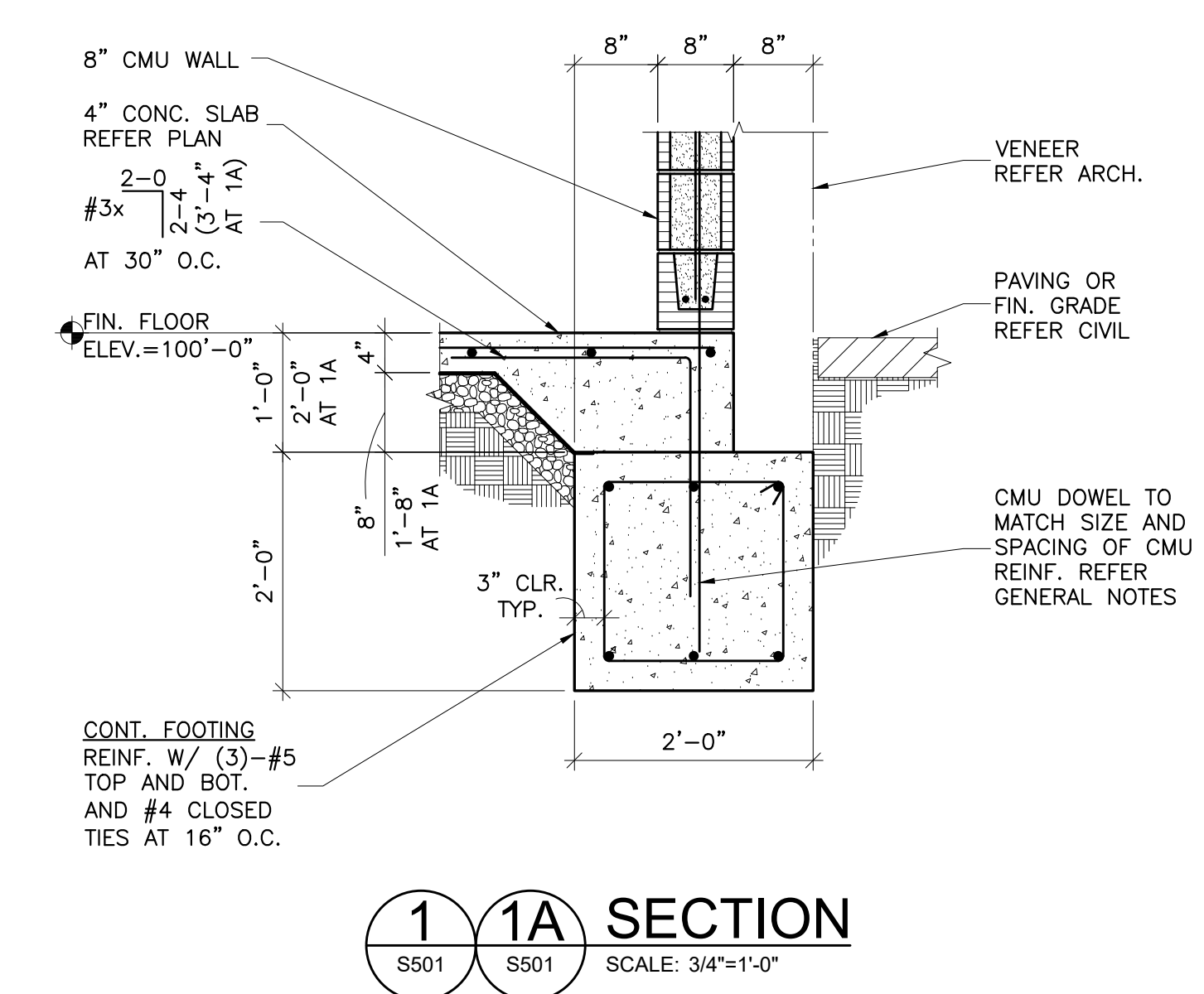
OWNERSHIP USE OF DOCUMENTS:
AGP EXPRESSLY RESERVES ITS
COPYRIGHT AND OTHER PROPERTY
RIGHTS OF ALL PLANS AND DRAWINGS
DESIGNED AND/OR PRODUCED. PLANS
AND DRAWINGS ARE NOT TO BE
REPRODUCED IN ANY FORM OR MANNER
WITHOUT THE EXPRESSED WRITTEN
CONSENT OF AGP.



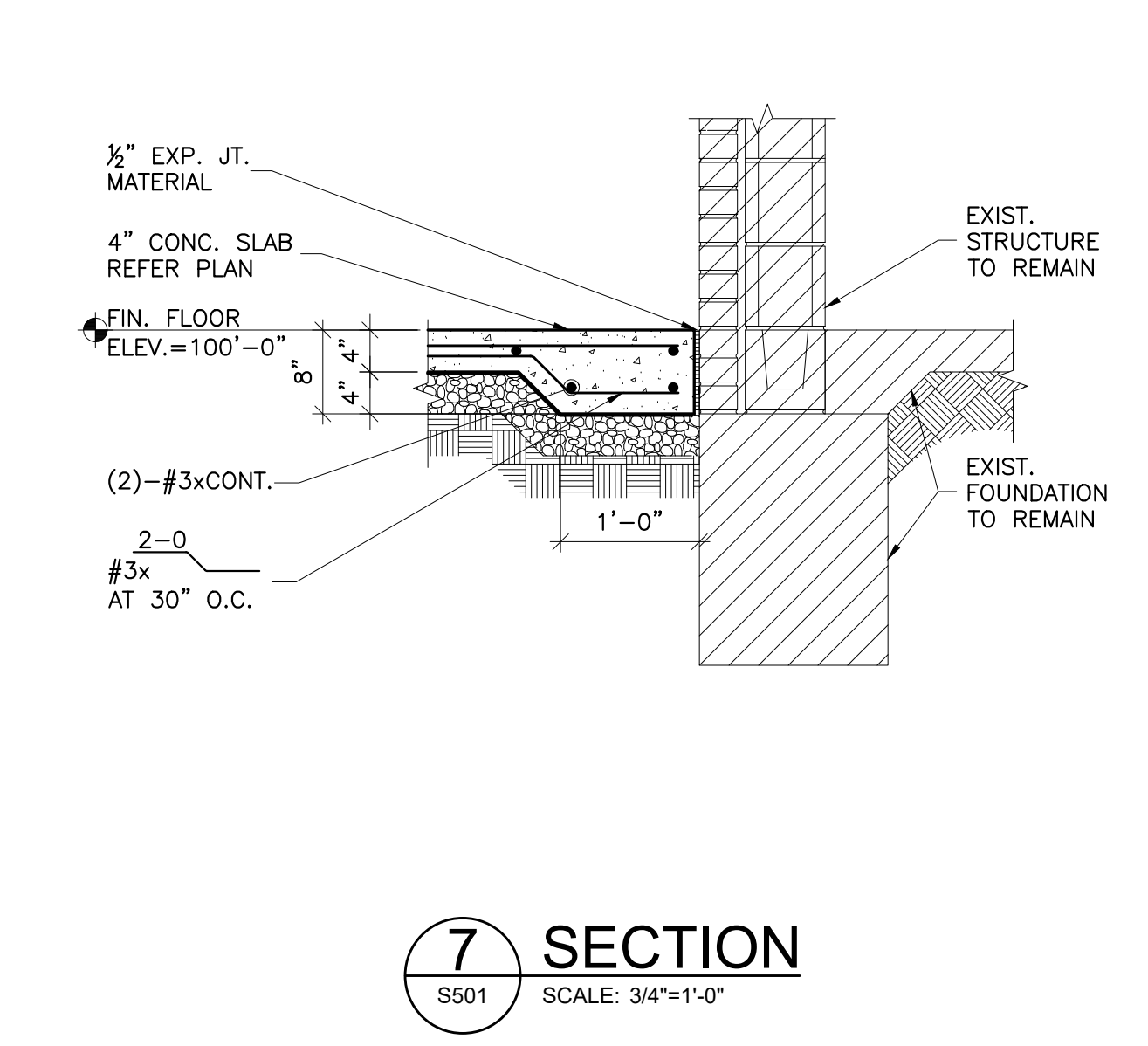
3 SECTION
S501 SCALE: 3/4"=1'-0"



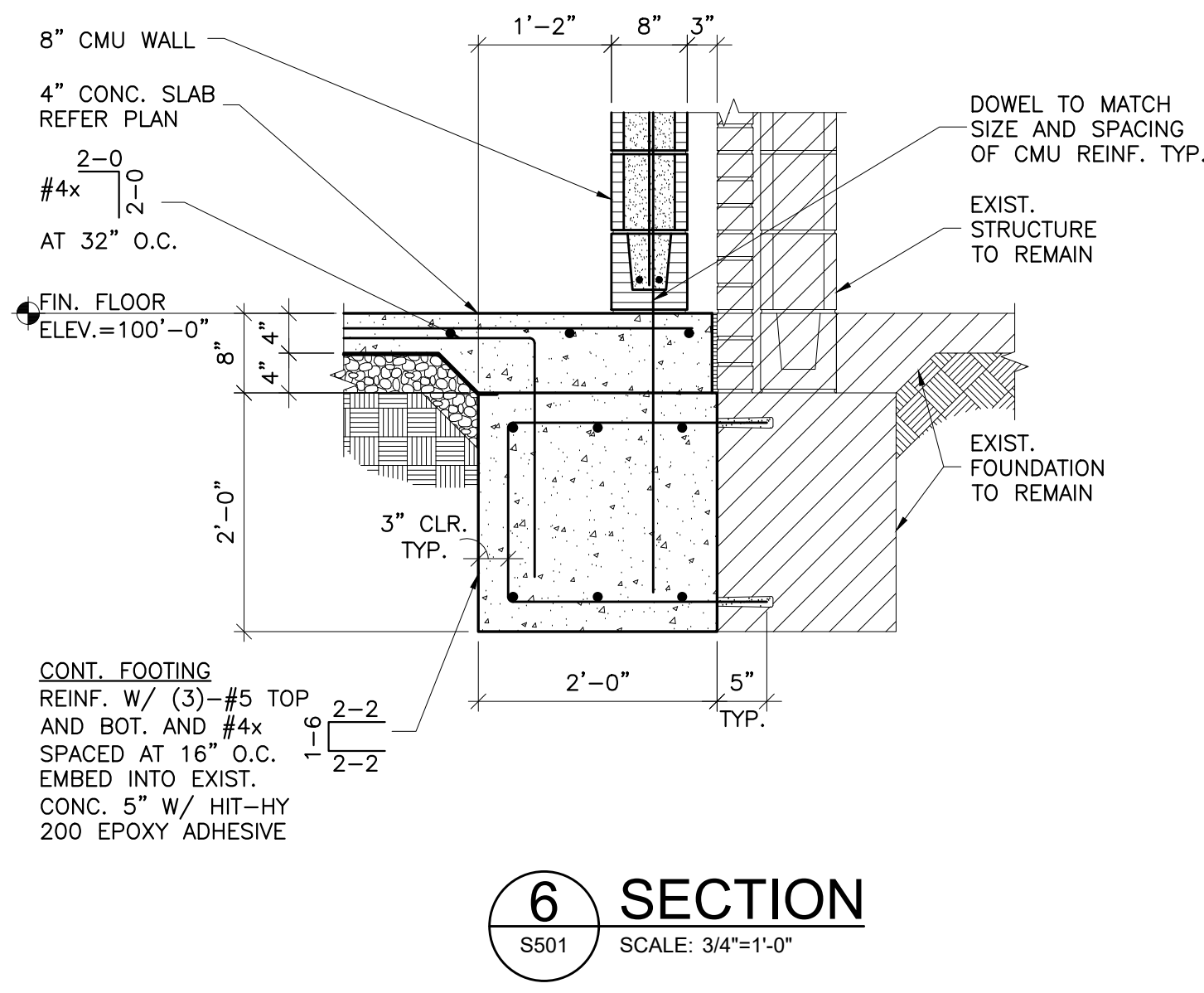
2 SECTION
S501 SCALE: 3/4"=1'-0"



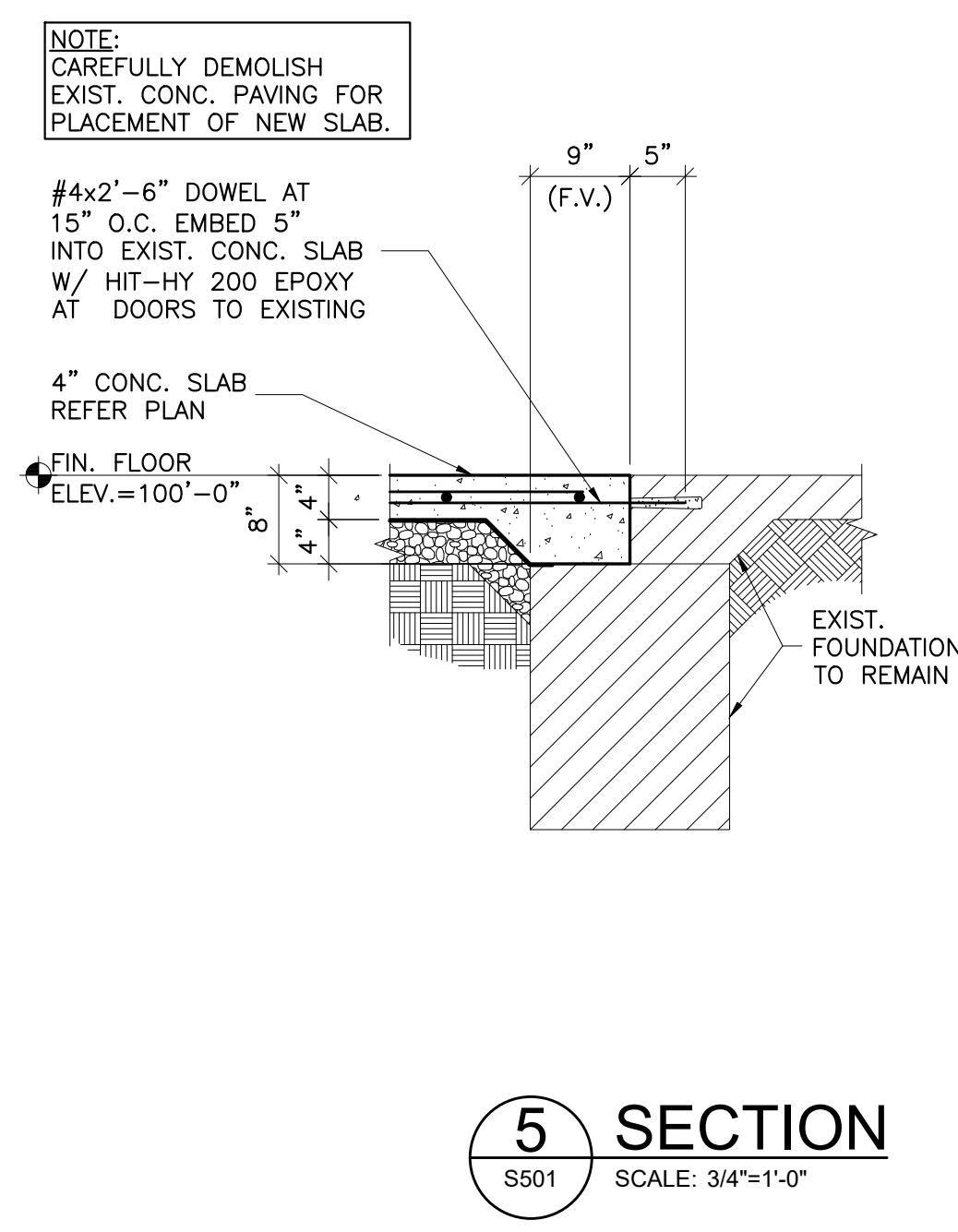
1 SECTION
S501 SCALE: 3/4"=1'-0"



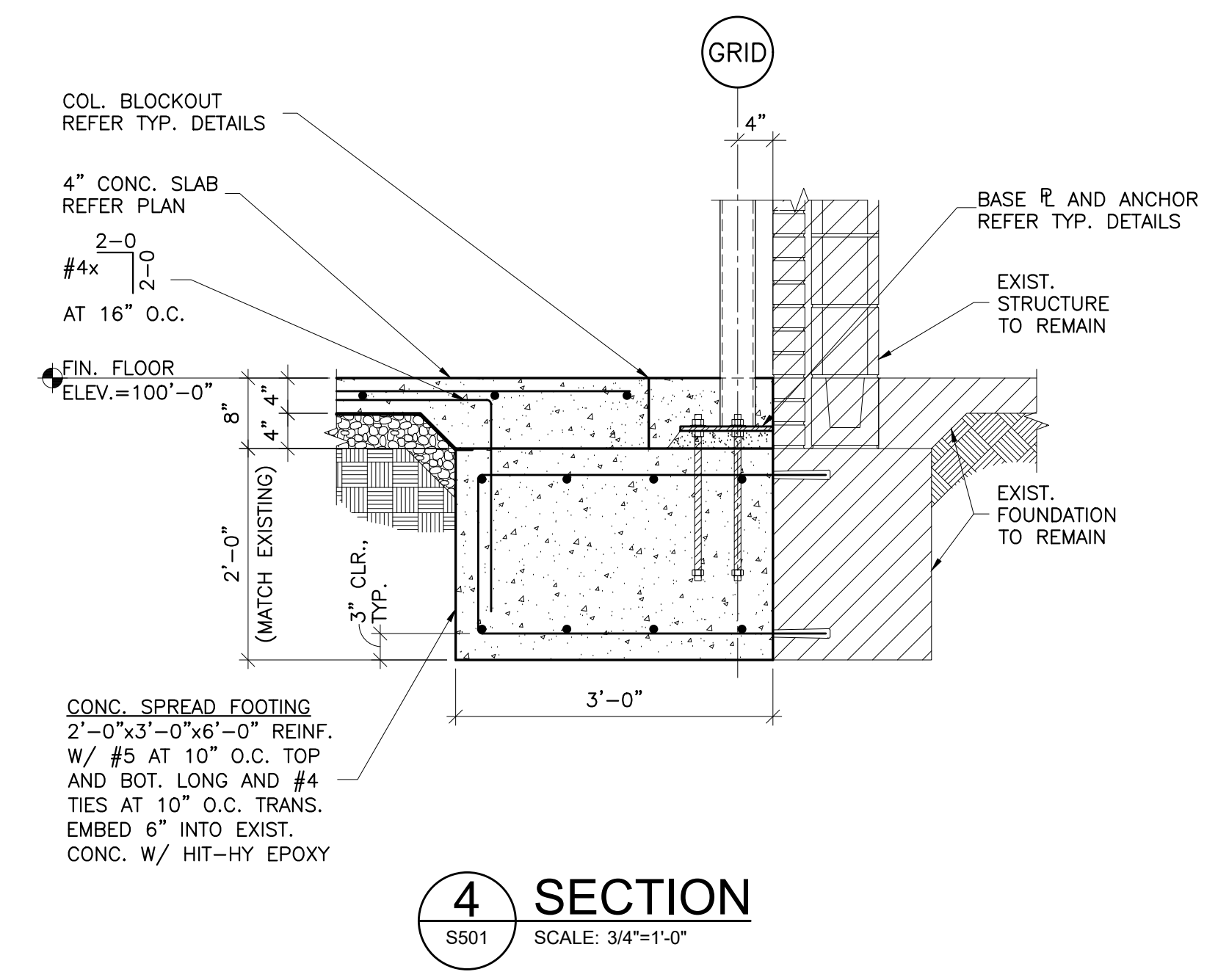
7 SECTION
S501 SCALE: 3/4"=1'-0"



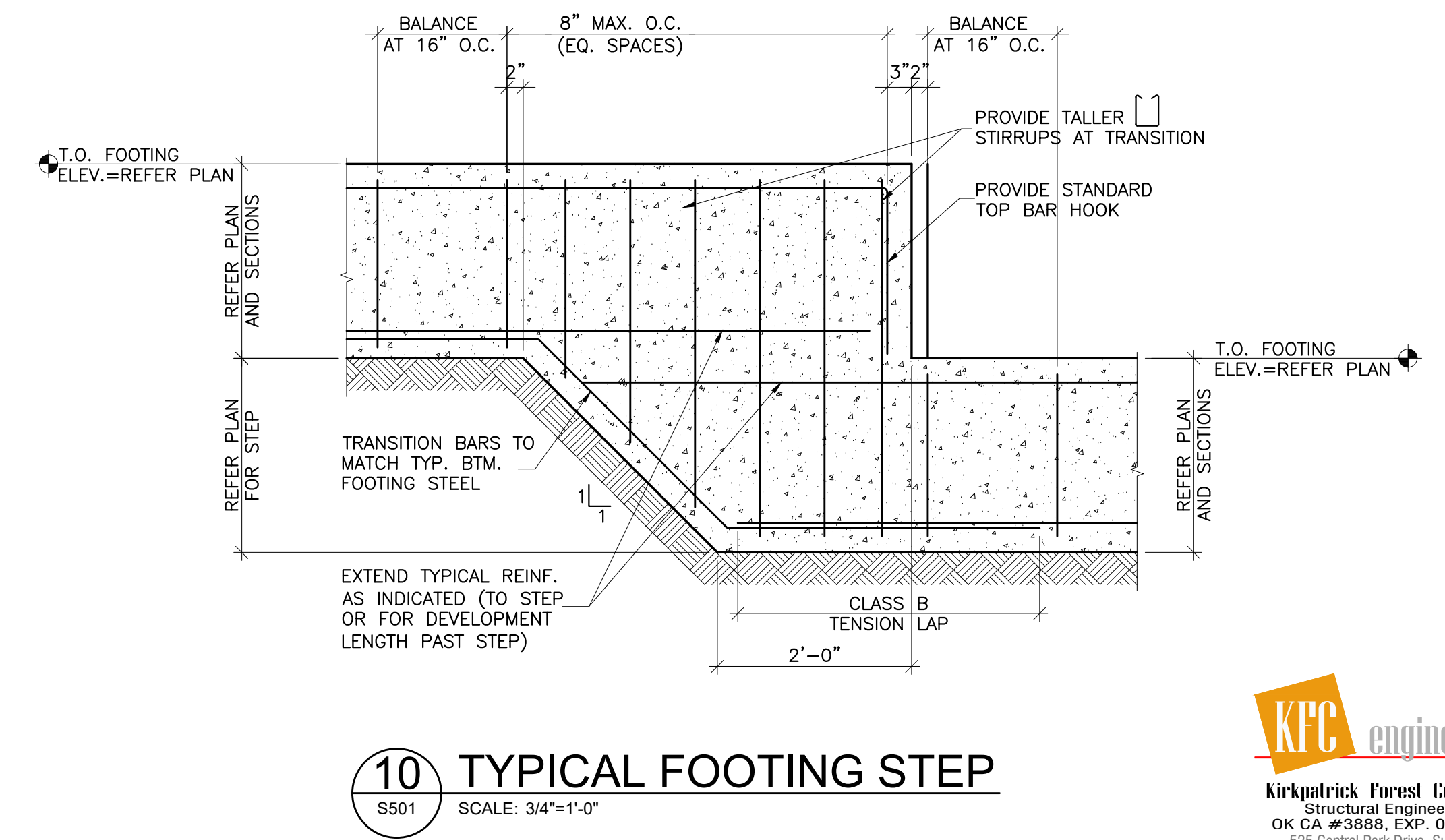
6 SECTION
S501 SCALE: 3/4"=1'-0"



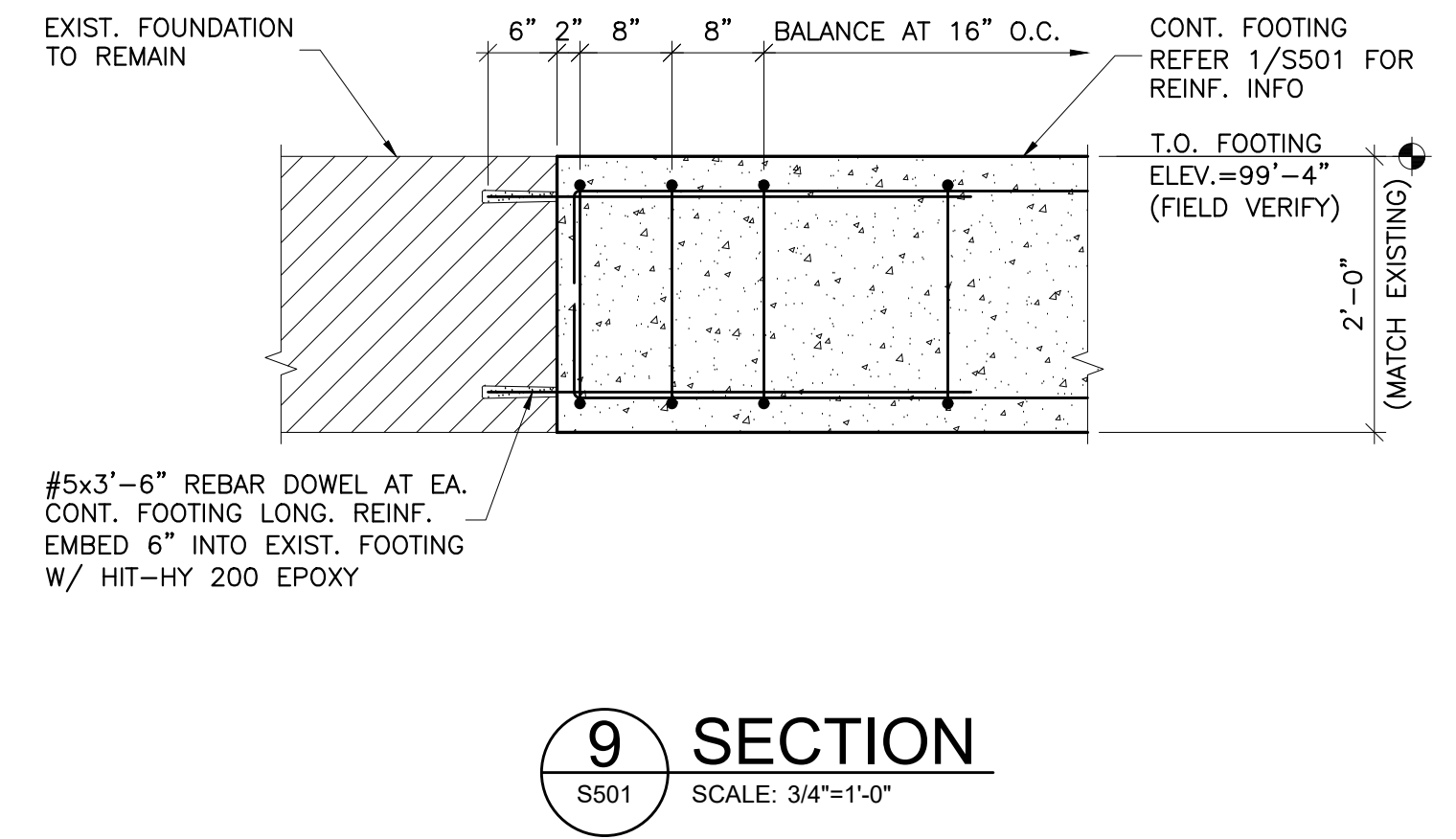
5 SECTION
S501 SCALE: 3/4"=1'-0"



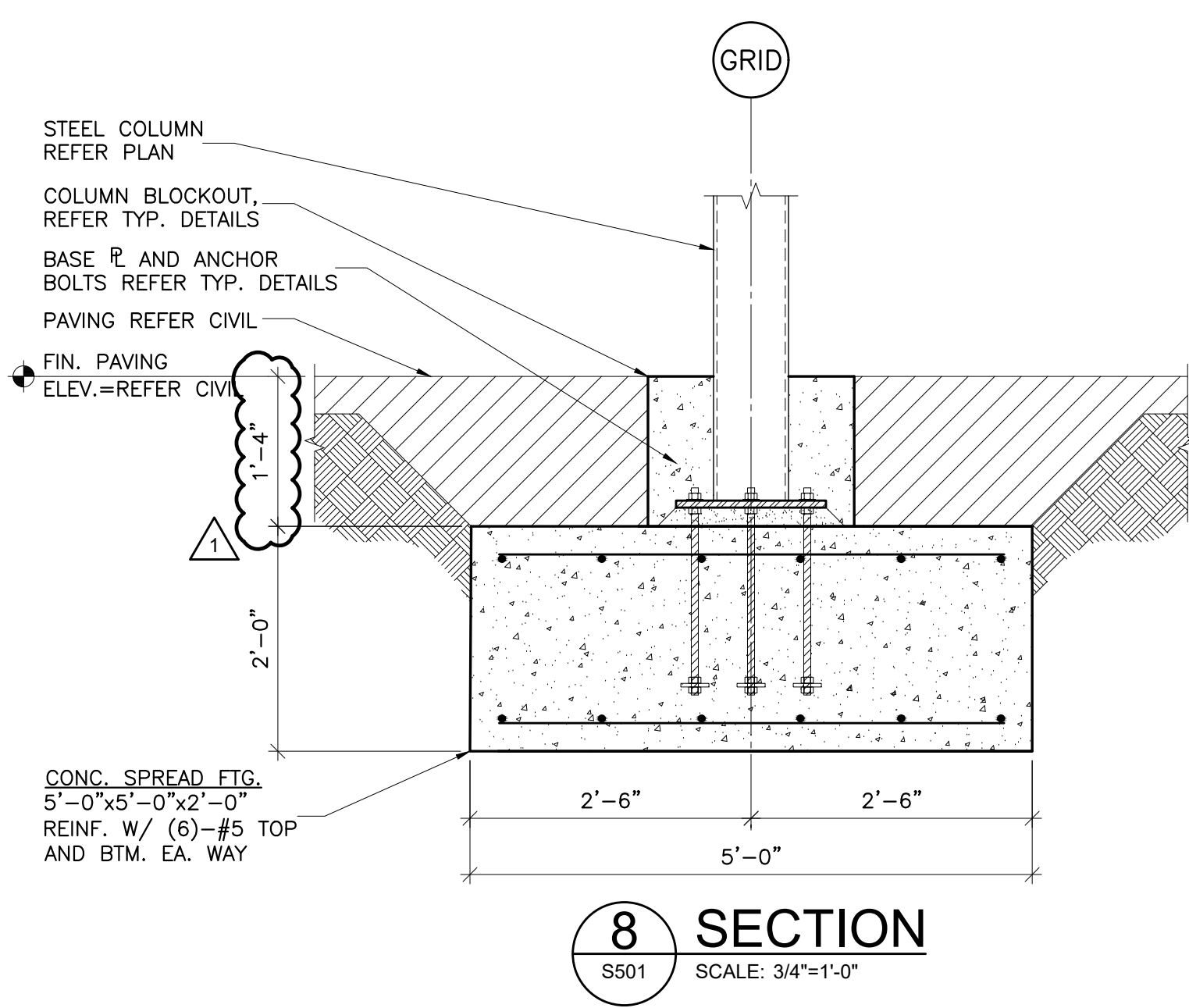
4 SECTION
S501 SCALE: 3/4"=1'-0"



10 TYPICAL FOOTING STEP
S501 SCALE: 3/4"=1'-0"



9 SECTION
S501 SCALE: 3/4"=1'-0"



8 SECTION
S501 SCALE: 3/4"=1'-0"



CJC

drawn by

BWB

checked by

JULY 2023

date

revisions

△ CB-02 11/29/2023

MOORE PUBLIC SCHOOLS
BOARD OF EDUCATION
MOORE, OKLAHOMA



MOORE Public Schools
LEARNING FOR LIFE

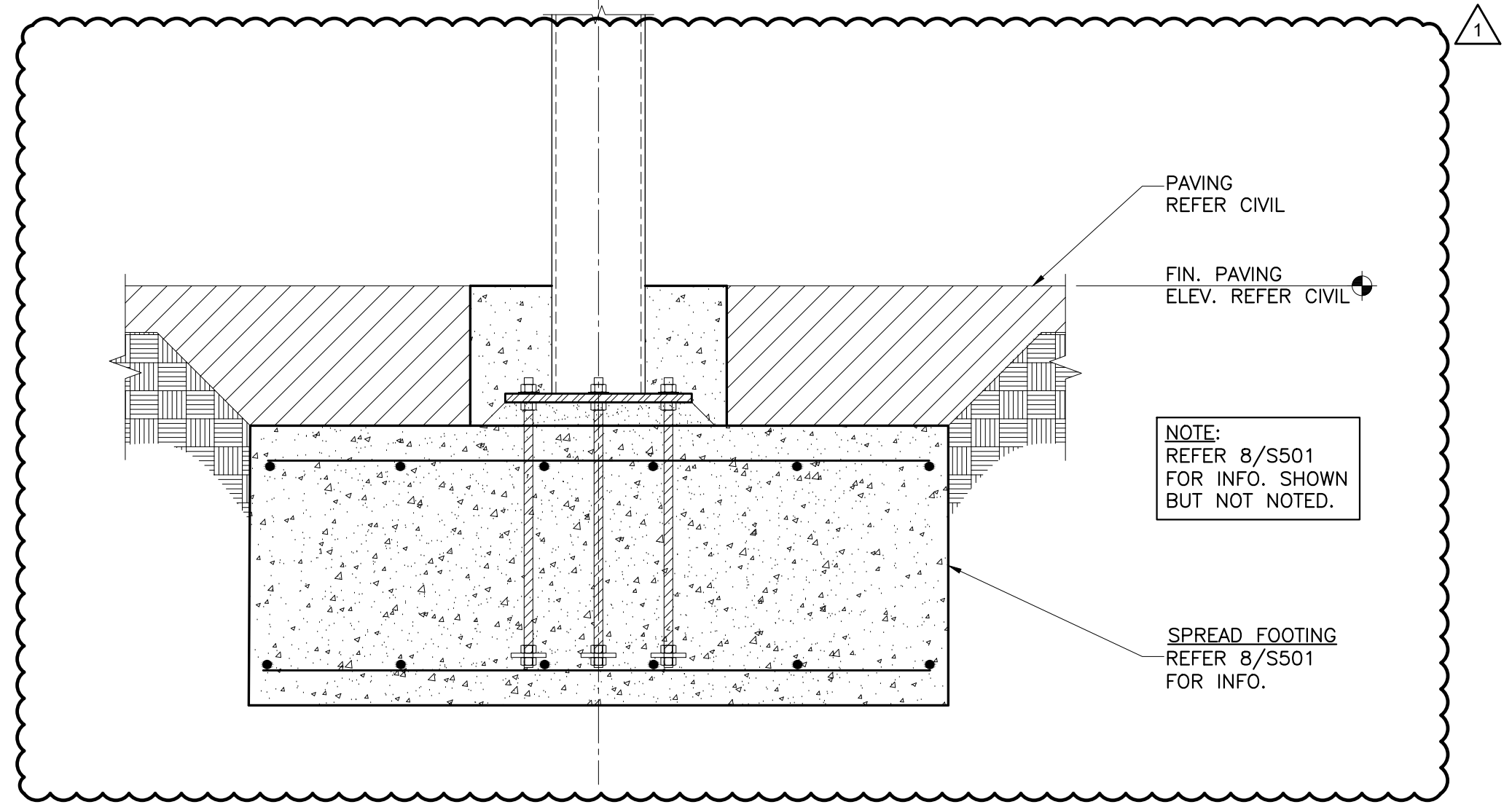
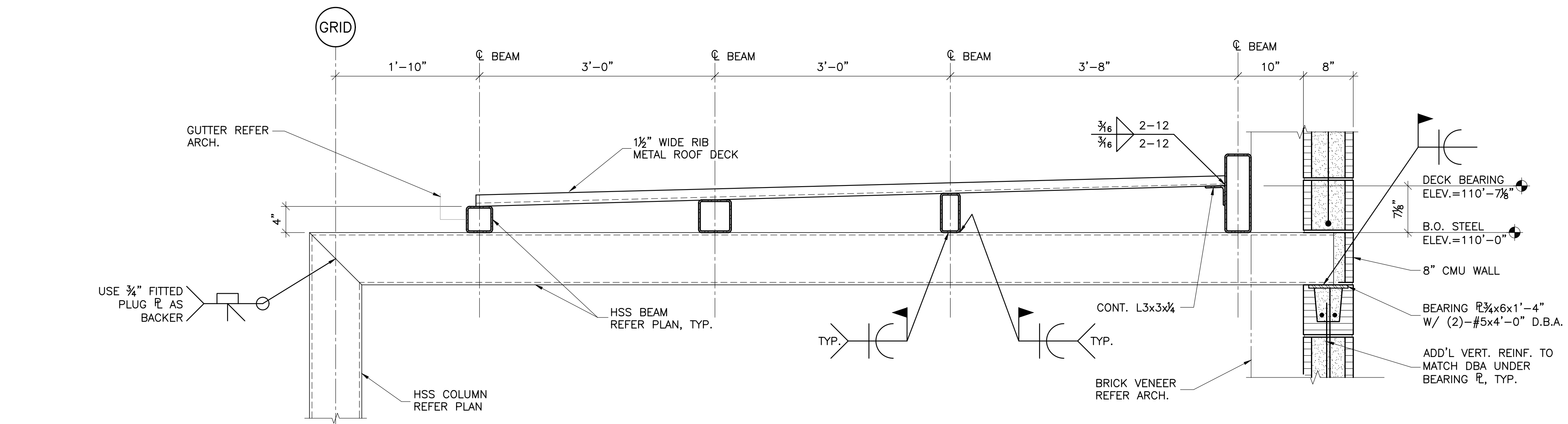
CLASSROOM ADDITION
HIGHLAND WEST
JUNIOR HIGH SCHOOL

sheet no:

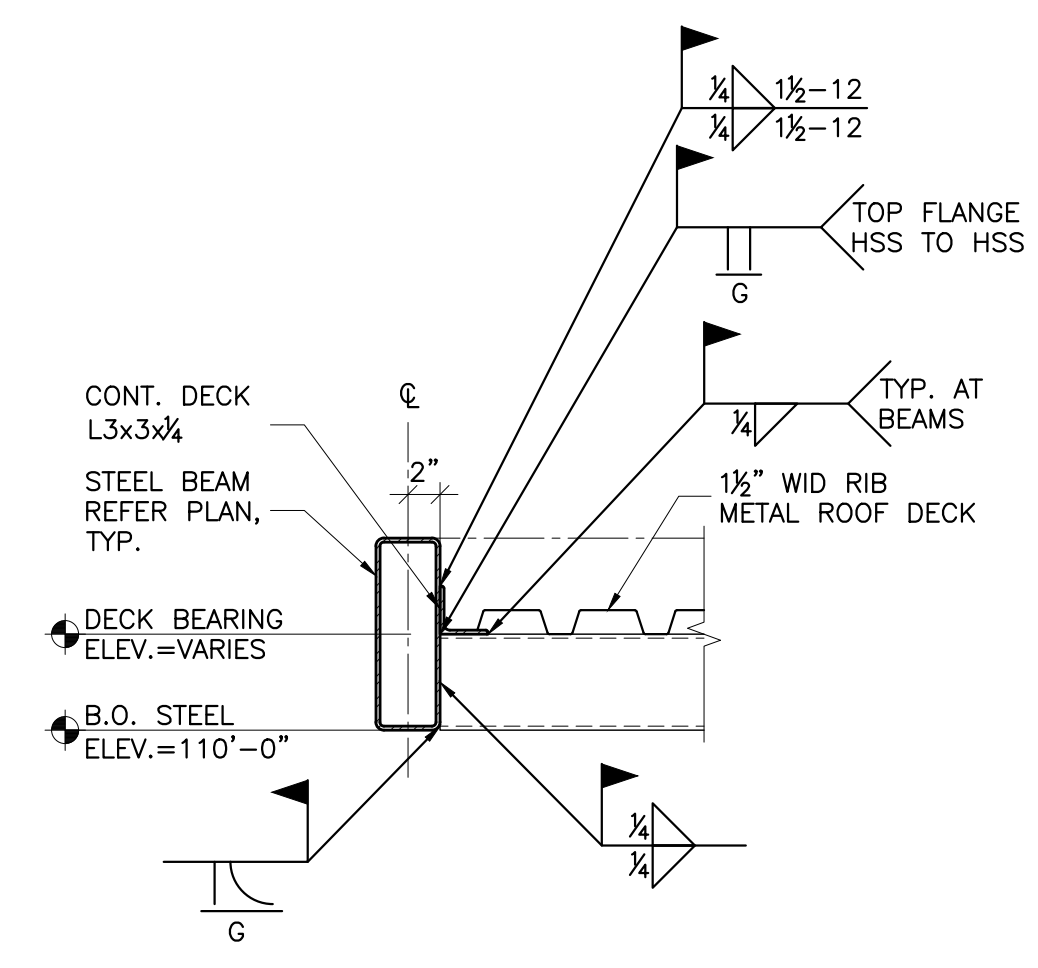
S603

OWNERSHIP USE OF DOCUMENTS:

AGP EXPRESSLY RESERVES ITS
COPYRIGHT AND OTHER PROPERTY
RIGHTS OF ALL PLANS AND DRAWINGS
DESIGNED AND/OR PRODUCED. PLANS
AND DRAWINGS ARE NOT TO BE
REPRODUCED IN ANY FORM OR MANNER
WITHOUT THE EXPRESSED WRITTEN
CONSENT OF AGP.



1 SECTION
S603 SCALE: 1"=1'-0"



2 SECTION
S603 SCALE: 1"=1'-0"