

ADDENDUM No. 1

Client: Abla Griffin Partnership
Project Name: Highland West JH STEM Classroom Addition
Project Location: Moore, OK

Issue Date: October 19, 2023

Owner: Moore Public Schools
Engineer: Salas O'Brien

Project No. 2023-02792-00



To: Prospective Bidders.

This Addendum forms a part of the Contract Documents and modifies the Bidding Documents dated August 18, 2023, (and previous addenda), with amendments and additions noted below. This Addendum consists of 2 pages and 5 attachments.

Index of Attachments:

Earthsmart Temperature Control Proposal

E101

E102

E103

E401

Acknowledge receipt of this Addendum in the space provided on the Bid Form. Failure to do so may disqualify Bidder.

CHANGES TO BIDDING REQUIREMENTS

- The attached Earthsmart Temperature Control proposal shall be included as part of the mechanical bid for this project.

CHANGES TO THE DRAWINGS

Revisions have been made to the following drawings and are issued in the form of full-size plans. Edits are indicated by a revision delta and a cloud surrounding the affected portion of the drawing.

- **SHEET E101 – ELECTRICAL LIGHTING PLAN – AREA A**
 - Refer to clouds and deltas for drawing change.
- **SHEET E102 – ELECTRICAL LIGHTING PLAN – AREA B**
 - Refer to clouds and deltas for drawing change.
- **SHEET E103 – ELECTRICAL LIGHTING PLAN – AREA C**
 - Refer to clouds and deltas for drawing change.
- **SHEET E401 – ELECTRICAL ONE-LINE DIAGRAM SHEET**
 - Refer to clouds and deltas for drawing change.



END OF ADDENDUM [01]

2600 Van Buren Street, Suite 2635
Norman, Oklahoma 73072

405.364.9926
salasobrien.com



5305 N Santa Fe Avenue
Oklahoma City, OK 73118

www.earthsmartcontrols.com

Phone: (405) 778-8008
Fax: (866) 676-5602

To: Moore Highland West Addition
Attn: Estimator

September 13, 2023

This is a proposal to provide controls for the Moore Highland West Addition project.

Splits (14)

- Provide and install Honeywell 6438SR controller: Includes panel, relays, wall thermostat, supply air sensor, heat enable, cooling enable, compressor monitoring and a CO2 sensor to control outside air damper (damper actuator by others).
- Commission the units to ensure proper operation.

EFS (2)

- Provide and install control for the exhaust fan.
- Commission the unit to ensure proper operation.

GPS Ionizers (14)

- Provide and install 14 new GPS-FC48-AC ionizers.
- Commission the unit to ensure proper operation.

Honeywell WEBS N4 Frontend

- Provide new Niagara 4 WEB-8000 (graphical user interface) and tie to existing N4 frontend.
- This WEB-8000 comes licensed for 10 devices.
- Provide 4 hours of user training.
- ***Provide 1-year parts and labor warranty.***
- Provide graphical representations of equipment listed above.
- Provide custom trending and alarming.
- Provide scheduling capabilities and remote access.

Continued on next page.....

CEARTHSMART CONTROLS

5305 N Santa Fe Avenue
Oklahoma City, OK 73118

www.earthsmartcontrols.com

Phone: (405) 778-8008
Fax: (866) 676-5602

**The total price for the control work above is: \$62,450.00
Sixty Two Thousand Four Hundred and Fifty Dollars**

We thank you for the opportunity to bid and look forward to working with you soon.

If you have any questions, please feel free to contact us at (405) 778-8008.

Exclusions for total job: Any wiring above 24V, smoke detectors, fresh air damper actuators and anything not mentioned in this proposal.



Erin Bevill
Controls Manager
EarthSmart Controls, LLC

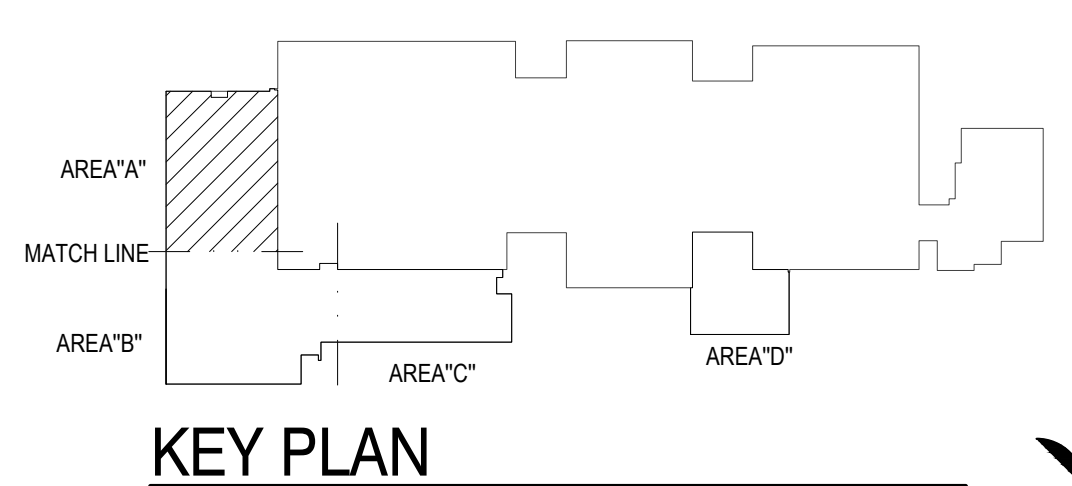


- ### LIGHTING GENERAL NOTES
- OCCUPANCY SENSOR LOCATIONS SHOWN ARE FOR DESIGN INTENT ONLY. LOCATE OCCUPANCY SENSORS PER MANUFACTURER'S WRITTEN INSTALLATION INSTRUCTIONS.
 - COORDINATE EXACT LOCATIONS AND MOUNTING HEIGHTS OF LIGHT FIXTURES WITH HVAC EQUIPMENT AND OTHER DEVICES/EQUIPMENT.
 - COORDINATE LIGHT SWITCHES WITH THERMOSTATS AND OTHER WALL MOUNTED DEVICES.
 - PROVIDE RELAY CONTACTOR FOR EXTERIOR LIGHTING. RELAY SHALL INTERLOCK WITH THE NEAREST EXISTING LIGHTING CIRCUIT SUCH THAT THE EXISTING LIGHTING CONTROL SHALL CONTROL THE NEW EXTERIOR LIGHTING.

NO WORK

1 ELECTRICAL LIGHTING PLAN - AREA A

SCALE: 1/8" = 1'-0"



AGP

the Abba Griffin Partnership L.L.C.

201 N. BROADWAY
SUITE 210
MOORE, OK. 73160
405.735.3477
AGP@theAGP.net
www.theAGP.net

CEDAR CREEK
CIVIL

KFC ENGINEERING
STRUCTURAL

SALAS O'BRIEN
MECHANICAL / ELECTRICAL



GT
drawn by

TVO
checked by

JULY 2023
date

revisions
10/18/23 ADD01

MOORE PUBLIC SCHOOLS
BOARD OF EDUCATION
MOORE, OKLAHOMA



CLASSROOM ADDITION
HIGHLAND WEST
JUNIOR HIGH SCHOOL

sheet no:
E101

Salas O'Brien

2600 Van Buren St., Suite 2635
Norman, OK 73072
Salas O'Brien Registration: CA# 7058
Expiration Date: 6/30/2025
Salas O'Brien Project Number: 2023-02792-00

OWNERSHIP USE OF DOCUMENTS:
AGP EXPRESSLY RESERVES ITS COPYRIGHT AND OTHER PROPERTY RIGHTS OF ALL PLANS AND DRAWINGS DESIGNED AND/OR PRODUCED. PLANS AND DRAWINGS ARE NOT TO BE REPRODUCED IN ANY FORM OR MANNER WITHOUT THE EXPRESSED WRITTEN CONSENT OF AGP.



GT	drawn by
TVO	checked by
JULY 2023	date
revisions	
10/18/23 ADD01	

MOORE PUBLIC SCHOOLS
BOARD OF EDUCATION
MOORE, OKLAHOMA



CLASSROOM ADDITION
HIGHLAND WEST
JUNIOR HIGH SCHOOL

sheet no:

E102

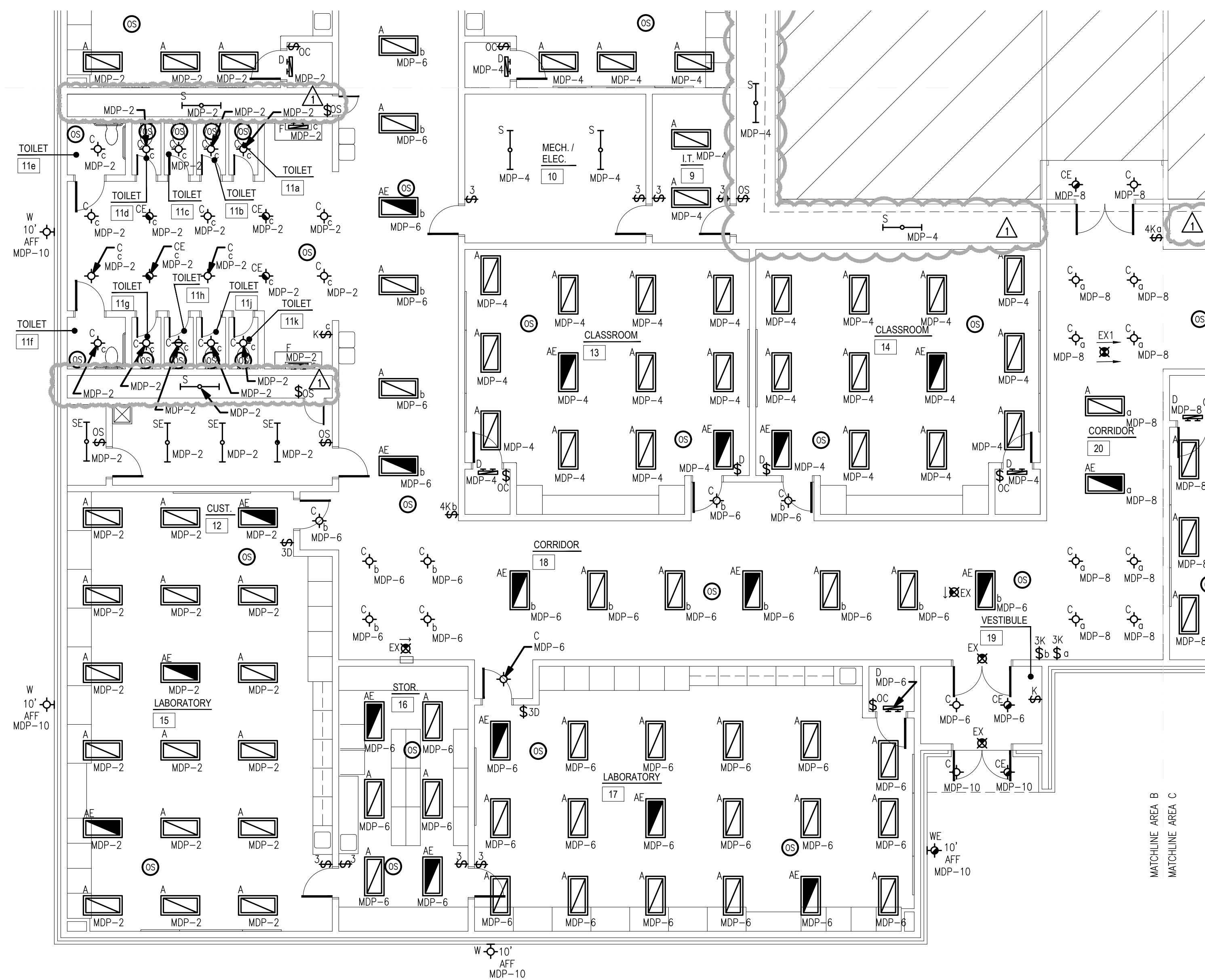
OWNERSHIP USE OF DOCUMENTS:
AGP EXPRESSLY RESERVES ITS COPYRIGHT AND OTHER PROPERTY RIGHTS OF ALL PLANS AND DRAWINGS DESIGNED AND/OR PRODUCED. PLANS AND DRAWINGS ARE NOT TO BE REPRODUCED IN ANY FORM OR MANNER WITHOUT THE EXPRESSED WRITTEN CONSENT OF AGP.

LIGHTING GENERAL NOTES

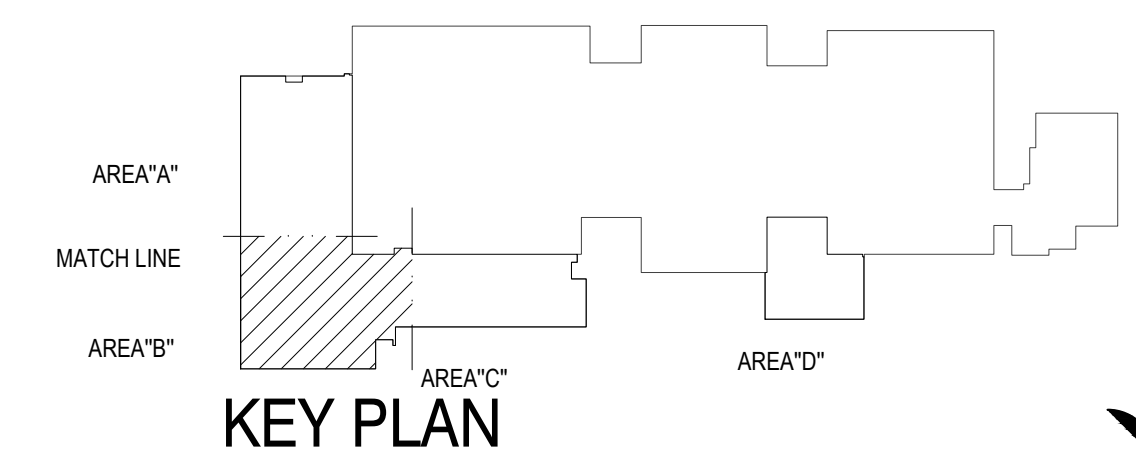
- OCCUPANCY SENSOR LOCATIONS SHOWN ARE FOR DESIGN INTENT ONLY. LOCATE OCCUPANCY SENSORS PER MANUFACTURER'S WRITTEN INSTALLATION INSTRUCTIONS.
- COORDINATE EXACT LOCATIONS AND MOUNTING HEIGHTS OF LIGHT FIXTURES WITH HVAC EQUIPMENT AND OTHER DEVICES/EQUIPMENT.
- COORDINATE LIGHT SWITCHES WITH THERMOSTATS AND OTHER WALL MOUNTED DEVICES.
- PROVIDE RELAY CONTACTOR FOR EXTERIOR LIGHTING. RELAY SHALL INTERLOCK WITH THE NEAREST EXISTING LIGHTING CIRCUIT SUCH THAT THE EXISTING LIGHTING CONTROL SHALL CONTROL THE NEW EXTERIOR LIGHTING.



MATCHLINE AREA A
MATCHLINE AREA B



1 ELECTRICAL LIGHTING PLAN - AREA B
SCALE: 1/8" = 1'-0"



Salas O'Brien
2600 Van Buren St., Suite 2635
Norman, OK 73072
Salas O'Brien Registration: CA# 7058
Expiration Date: 6/30/2025
Salas O'Brien Project Number: 2023-02792-00

LIGHTING GENERAL NOTES

- OCCUPANCY SENSOR LOCATIONS SHOWN ARE FOR DESIGN INTENT ONLY. LOCATE OCCUPANCY SENSORS PER MANUFACTURER'S WRITTEN INSTALLATION INSTRUCTIONS.
- COORDINATE EXACT LOCATIONS AND MOUNTING HEIGHTS OF LIGHT FIXTURES WITH HVAC EQUIPMENT AND OTHER DEVICES/EQUIPMENT.
- COORDINATE LIGHT SWITCHES WITH THERMOSTATS AND OTHER WALL MOUNTED DEVICES.
- PROVIDE RELAY CONTACTOR FOR EXTERIOR LIGHTING. RELAY SHALL INTERLOCK WITH THE NEAREST EXISTING LIGHTING CIRCUIT SUCH THAT THE EXISTING LIGHTING CONTROL SHALL CONTROL THE NEW EXTERIOR LIGHTING.

AGP

the Abila Griffin Partnership L.L.C.

201 N. BROADWAY
SUITE 210
MOORE, OK. 73160
405.735.3477
AGP@theAGP.net
www.theAGP.net

CEDAR CREEK
CIVIL

KFC ENGINEERING
STRUCTURAL

SALAS O'BRIEN
MECHANICAL / ELECTRICAL



GT	drawn by
TVO	checked by
JULY 2023	date
	revisions
10/18/23 ADD01	

MOORE PUBLIC SCHOOLS
BOARD OF EDUCATION
MOORE, OKLAHOMA

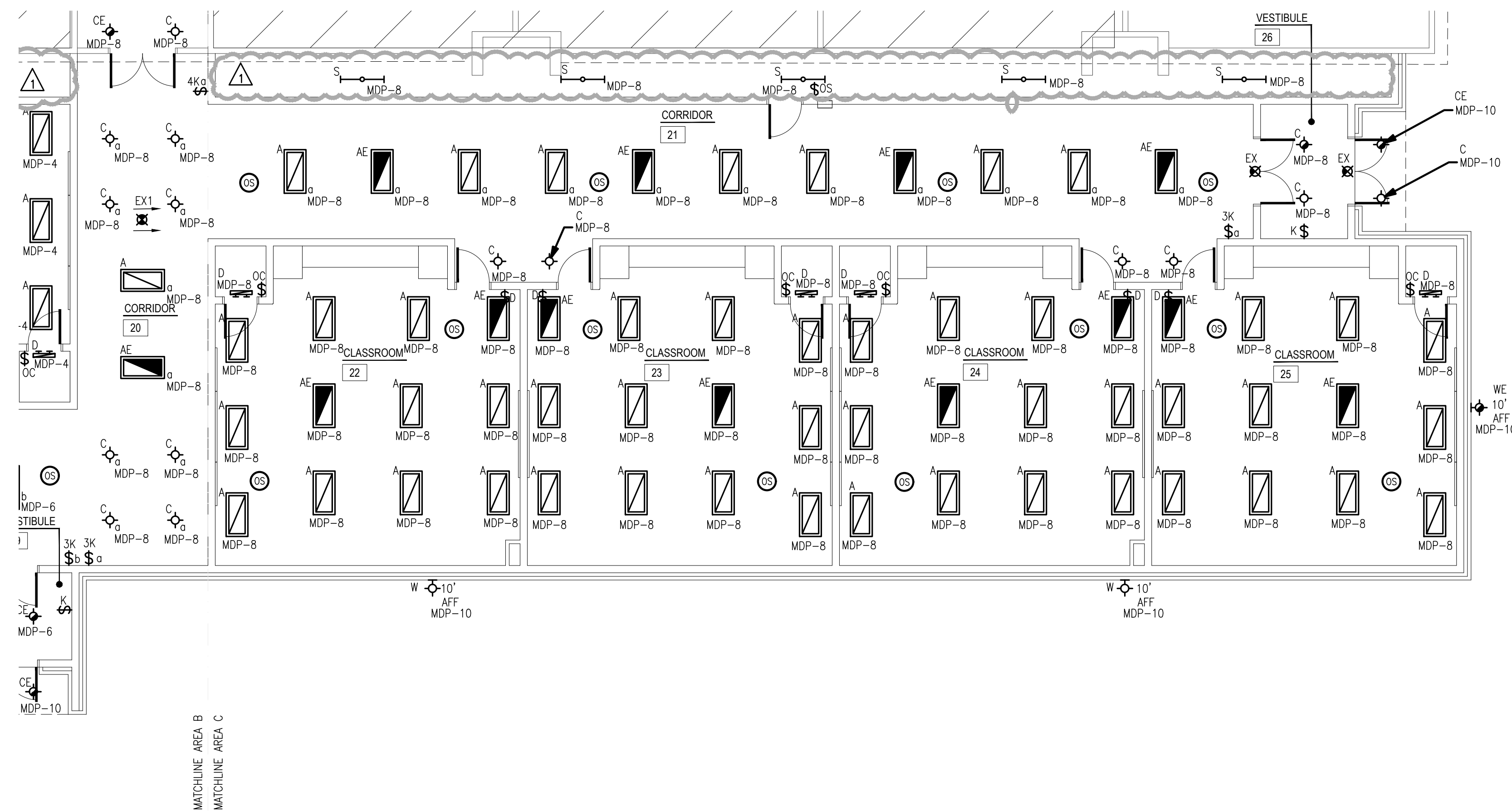


CLASSROOM ADDITION
HIGHLAND WEST
JUNIOR HIGH SCHOOL

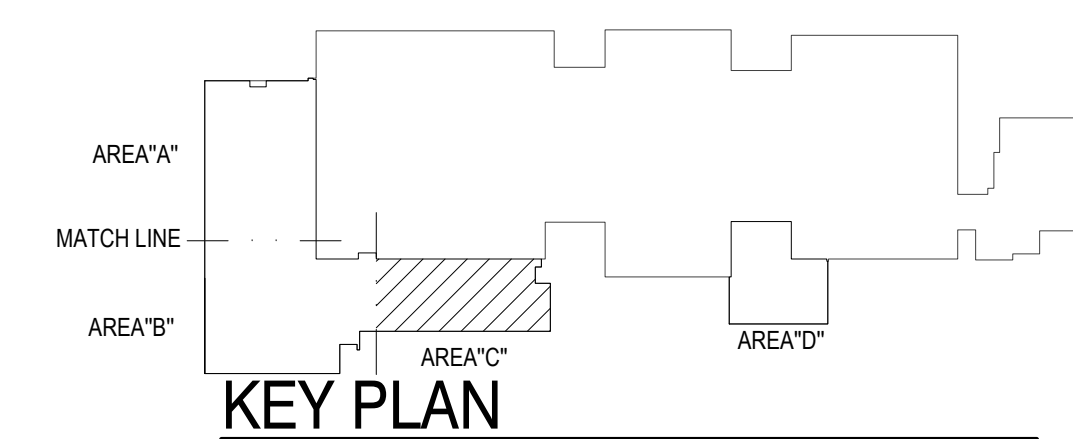
sheet no:

E103

OWNERSHIP USE OF DOCUMENTS:
AGP EXPRESSLY RESERVES ITS COPYRIGHT AND OTHER PROPERTY RIGHTS OF ALL PLANS AND DRAWINGS DESIGNED AND/OR PRODUCED. PLANS AND DRAWINGS ARE NOT TO BE REPRODUCED IN ANY FORM OR MANNER WITHOUT THE EXPRESSED WRITTEN CONSENT OF AGP.



1 ELECTRICAL LIGHTING PLAN - AREA C
SCALE: 1/8" = 1'-0"



Salas O'Brien
2600 Van Buren St., Suite 2635
Norman, OK 73072
Salas O'Brien Registration: CA# 7058
Expiration Date: 6/30/2025
Salas O'Brien Project Number: 2023-02792-00



GT
drawn by

TVO
checked by

JULY 2023
date

revisions
10/18/23 ADD01

MOORE PUBLIC SCHOOLS
BOARD OF EDUCATION
MOORE, OKLAHOMA



CLASSROOM ADDITION
HIGHLAND WEST
JUNIOR HIGH SCHOOL

sheet no:

E401

OWNERSHIP USE OF DOCUMENTS:

AGP EXPRESSLY RESERVES ITS
COPYRIGHT AND OTHER PROPERTY
RIGHTS OF ALL PLANS AND DRAWINGS
DESIGNED AND/OR PRODUCED. PLANS
AND DRAWINGS ARE NOT TO BE
REPRODUCED IN ANY FORM OR MANNER
WITHOUT THE EXPRESSED WRITTEN
CONSENT OF AGP.

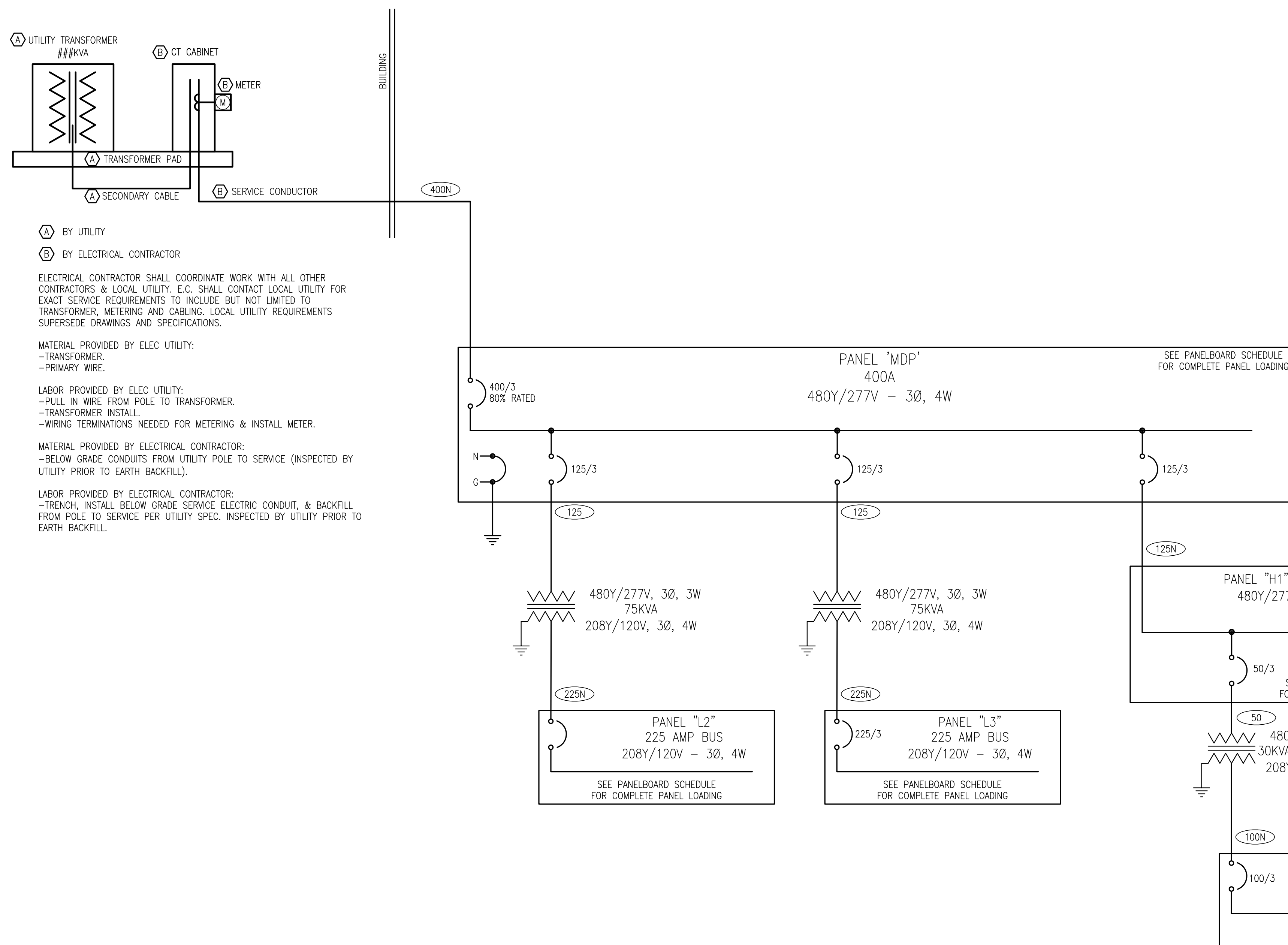
GENERAL NOTES

- AIC RATINGS ARE ESTIMATED BASED ON AVAILABLE DATA DURING DESIGN. CONTRACTOR TO VERIFY AVAILABLE FAULT CURRENT WITH UTILITY.
- FAULT CURRENT, ARC FLASH, AND COORDINATION STUDY SHALL BE PERFORMED BY A THIRD PARTY ONCE EXACT PANEL PLACEMENT AND DISTANCES ARE DETERMINED. REFER TO SPECIFICATIONS SECTION 26 0573 FOR MORE INFORMATION.
- PROVIDE A MINIMUM OF 10 SPARE 1P20A BREAKERS FOR EACH 120V SUB-PANEL.

FEEDER SCHEDULE

AMPS	CONDUIT SIZE 4W	CONDUIT SIZE 3W	PHASE CONDUCTORS	EQUIPMENT GROUND CONDUCTOR
20	3/4"	3/4"	#12	#12
25	3/4"	3/4"	#10	#10
30	3/4"	3/4"	#10	#10
35	1"	3/4"	#8	#10
40	1"	3/4"	#8	#10
45	1"	1"	#6	#10
50	1"	1"	#6	#10
60	1 1/4"	1 1/4"	#4	#10
70	1 1/4"	1 1/4"	#4	#8
80	1 1/4"	1 1/4"	#3	#8
90	1 1/2"	1 1/4"	#2	#8
100	1 1/2"	1 1/4"	#1	#8
110	2"	1 1/2"	#2	#6
125	2"	1 1/2"	#1	#6
150	2"	1 1/2"	#1/0	#6
175	2"	2"	#2/0	#6
200	2"	2"	#3/0	#6
225	2 1/2"	2"	#4/0	#4
250	3"	2 1/2"	250 kcmil	#4
300	3"	3"	350 kcmil	#4
350	3 1/2"	3"	500 kcmil	#3
400	(2) 2"	(2) 2"	2 SETS OF #3/0	#3
450	(2) 2 1/2"	(2) 2"	2 SETS OF #4/0	#2
500	(2) 2 1/2"	(2) 2 1/2"	2 SETS OF 250 kcmil	#2
600	(2) 3"	(2) 3"	2 SETS OF 350 kcmil	#1
700	(2) 3 1/2"	(2) 3"	2 SETS OF 500 kcmil	#1/0
800	(3) 3"	(3) 2 1/2"	3 SETS OF 300 kcmil	#1/0
900	(3) 3 1/2"	(3) 3"	3 SETS OF 400 kcmil	#2/0
1000	(3) 3 1/2"	(3) 3"	3 SETS OF 500 kcmil	#2/0
1200	(4) 3"	(4) 3"	4 SETS OF 350 kcmil	#3/0
1600	(5) 3 1/2"	(5) 3"	5 SETS OF 500 kcmil	#4/0
1800	(6) 3 1/2"	(6) 3"	6 SETS OF 400 kcmil	250 kcmil
2000	(6) 3 1/2"	(6) 3"	6 SETS OF 500 kcmil	250 kcmil

- NOTES:
- FEEDER SIZES ARE ON THE PLAN WHERE 60 REFERS TO A 60A FEEDER WITHOUT NEUTRAL AND 60N REFERS TO A 60A FEEDER WITH NEUTRAL.
 - SOME FEEDER SIZES DO NOT MATCH BREAKER SIZE DUE TO UP-SIZING OF THE FEEDER FOR VOLTAGE DROP.
 - CONDUITS ARE SIZED PER NEC TABLES FOR THHN/THWN AND MAY BE UPSIZED FOR EASE OF PULLING OR DOWNSIZED AS ALLOWED PER NEC FOR CONDUIT TYPE(S) BEING INSTALLED.
 - ALL CONDUCTORS 100A AND LESS ARE SIZED PER 60 DEGREE LUGS, EC MAY SIZE CONDUCTORS FOR ACTUAL RATING OF LUGS PER NEC.



- (A) BY UTILITY
(B) BY ELECTRICAL CONTRACTOR

ELECTRICAL CONTRACTOR SHALL COORDINATE WORK WITH ALL OTHER CONTRACTORS & LOCAL UTILITY. E.C. SHALL CONTACT LOCAL UTILITY FOR EXACT SERVICE REQUIREMENTS TO INCLUDE BUT NOT LIMITED TO TRANSFORMER, METERING AND CABLING. LOCAL UTILITY REQUIREMENTS SUPERSEDE DRAWINGS AND SPECIFICATIONS.

MATERIAL PROVIDED BY ELEC UTILITY:
-TRANSFORMER
-PRIMARY WIRE

LABOR PROVIDED BY ELEC UTILITY:
-PULL IN WIRE FROM POLE TO TRANSFORMER.
-TRANSFORMER INSTALL.
-WIRING TERMINATIONS NEEDED FOR METERING & INSTALL METER.

MATERIAL PROVIDED BY ELECTRICAL CONTRACTOR:
-BELOW GRADE CONDUITS FROM UTILITY POLE TO SERVICE (INSPECTED BY UTILITY PRIOR TO EARTH BACKFILL).

LABOR PROVIDED BY ELECTRICAL CONTRACTOR:
-TRENCH, INSTALL BELOW GRADE SERVICE ELECTRIC CONDUIT, & BACKFILL FROM POLE TO SERVICE PER UTILITY SPEC. INSPECTED BY UTILITY PRIOR TO EARTH BACKFILL.

1 ELECTRICAL ONE-LINE DIAGRAM

NO SCALE