

CONSTRUCTION BULLETIN # 5

Client: Abla Griffin Partnership
 Project Name: Highland East JH Classroom Addition
 Project Number: 2021-02035-00

June 6, 2022

Requested by: Owner
 Contractor:
 Salas O'Brien:

To: Mike Abla, Clay Griffin (AGP)

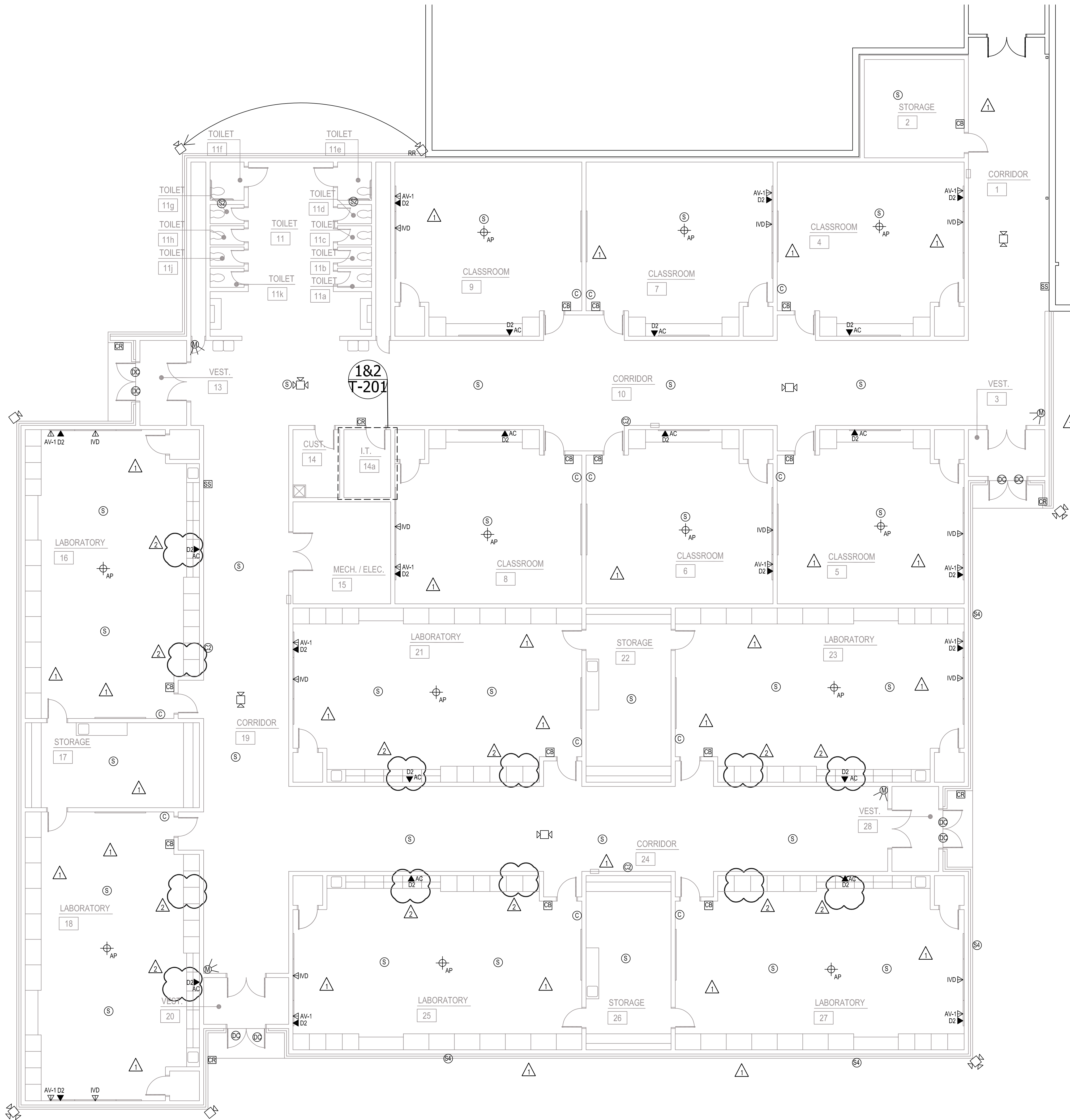
This Construction Bulletin is issued to:

- Offer additional information for clarification or supplemental drawings for layout assistance.
- Request cost and time impact to initiate a change to the Contract Documents. Owner approval is required, do not commence with revisions unless directed in writing. Avoid Work in areas that may be affected by proposed change until approved or rejected. Once approved, forward Change Order documentation as required by the Contract Documents.
- Direct a required change in the Contract Documents. Proceed with change(s) as indicated. Forward Change Order documentation as required by the Contract Documents.
- Response to RFI _____.

Item No.	Description	Attachment
1	Adjust locations of above counter D2 data drops in Laboratory 16, 18, 21, 23, 25 and 27.	T101

END OF CB-05





GENERAL NOTES

- FIRE ALARM: CONNECT NEW FIRE ALARM DEVICES TO EXISTING SILENT KNIGHT FIRE ALARM SYSTEM. SUPPLY ALL NAC PANELS, POWER SUPPLIES, ETC. NEEDED TO MAKE A COMPLETE AND CODE COMPLIANT SYSTEM.
- SECURITY: CONNECT NEW SECURITY ALARM DEVICES TO NEW ZONE EXPANDED AND POWER SUPPLY. CONNECT NEW ZONE EXPANDER AND POWER SUPPLY TO EXISTING MAIN BUILDING SECURITY CONTROL PANEL VIA 16 GAUGE 4 CONDUCTOR NON-SHIELDED CABLE.
- INTERCOM: CONNECT NEW INTERCO DEVICES TO EXISTING TELECOR SYSTEM. INTERCOM WIRE MUST BE SHIELDED. PROVIDE TELECOR CLOCK DRIVER IF NEEDED.
- CLOCK: CONNECT NEW CLOCK DEVICES TO EXISTING TELECOR SYSTEM. PROVIDE TELECOR CLOCK DRIVER IF NEEDED.
- DATA: CONNECT NEW DATA AND WIFI DROPS TO NEW IDF. CONNECT NEW IDF TO EXISTING MDF VIA FIBER AND CAT 6. SEE NETWORK SPECIFICATIONS FOR FIBER AND CAT 6 INFO.
- ACCESS CONTROL: CONNECT NEW ACCESS CONTROL DEVICES TO NEW KEYSKAN CONTROLLER. PROVIDE CONTROLLER READERS STRIKES ETC TO COMPLETE AN OPERABLE SYSTEM.
- CAMERA: CONNECT NEW CAMERA DROPS TO NEW IDF. EXISTING SYSTEM IS AVIGILON. MATCH PER SPECIFICATIONS.
- SEE DETAIL SHEET FOR CARD READER AND SECURITY CONTACT DETAILS.

drawn by MA

checked by NY

SEPTEMBER 2021
date

revisions
 1 4/12/22 CB03
 2 6/06/22 CB05

MOORE PUBLIC SCHOOLS
BOARD OF EDUCATION
MOORE, OKLAHOMA



CLASSROOM ADDITION
HIGHLAND EAST
JUNIOR HIGH SCHOOL

sheet no:
T101

