

CJC

drawn by

BWB

checked by

SEPTEMBER 2021

date

revisions

MOORE PUBLIC SCHOOLS
BOARD OF EDUCATION
MOORE, OKLAHOMA



MOORE Public Schools
LEARNING FOR LIFE

CLASSROOM ADDITION
HIGHLAND EAST
JUNIOR HIGH SCHOOL

sheet no:

S301

OWNERSHIP USE OF DOCUMENTS:

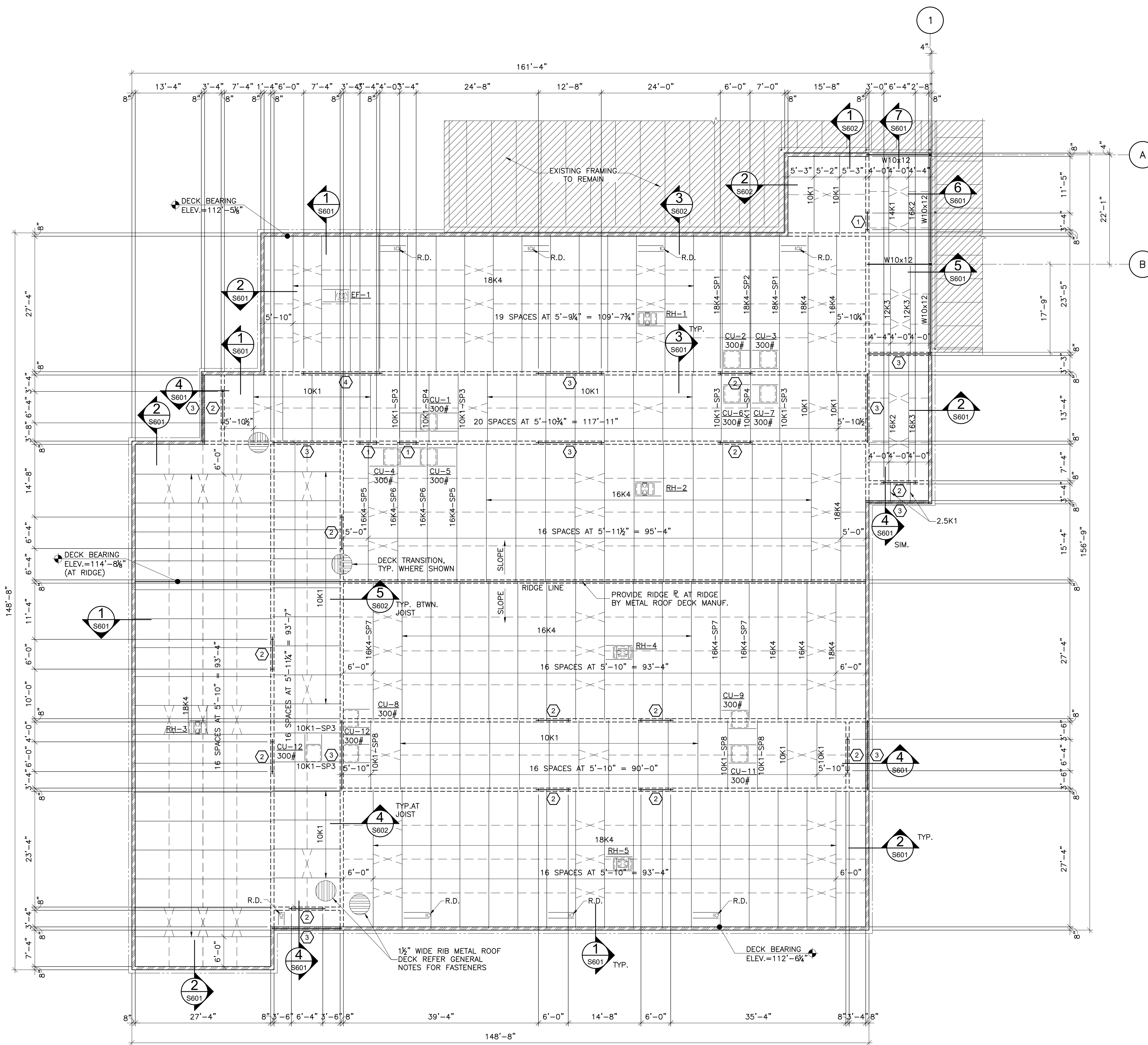
AGP EXPRESSLY RESERVES ITS
COPYRIGHT AND OTHER PROPERTY
RIGHTS OF ALL PLANS AND DRAWINGS
DESIGNED AND/OR PRODUCED. PLANS
AND DRAWINGS ARE NOT TO BE
REPRODUCED IN ANY FORM OR MANNER
WITHOUT THE EXPRESSED WRITTEN
CONSENT OF AGP.

ROOF FRAMING PLAN NOTES:

- ALL ELEVATIONS ARE REFERENCED FROM FINISHED FLOOR DATUM OF 100'-0". REFER GENERAL NOTES FOR ACTUAL ELEVATION.
- ALL ROOF OPENINGS FOR MECHANICAL ROOF TOP UNITS ARE APPROXIMATELY LOCATED. EXACT SIZE AND LOCATIONS SHALL BE COORDINATED WITH THE SUCCESSFUL MECHANICAL CONTRACTOR. ALL ROOF/WALL OPENINGS SHALL BE SUPPORTED WITH TYPICAL ANGLE FRAME UNLESS NOTED OTHERWISE.
- T.O. PARAPET REFERS TO THE TOP OF MASONRY WALL ELEVATION WITH REFERENCE TO FINISH FLOOR ELEVATION SPECIFIED ON THE FOUNDATION PLAN U.N.O.
- Ⓢ DENOTES MASONRY LINTEL TYPE. REFER 9/S104 FOR ADDITIONAL INFORMATION.

FRAMING PLAN LEGEND:

- = 1½x1½x¾ MIN. HORIZONTAL JOIST BRIDGING BY JOIST MANUFACTURER
- X-X- = 1½x1½x¾ MIN. JOIST X-BRIDGING BY JOIST MANUFACTURER
- BEAM SIZE: W12x22 (112'-0") T.O.S. ELEV.
- ▨ = PARAPET LOAD BEARING MASONRY WALLS
- = INTERIOR LOAD BEARING MASONRY WALLS



1 FRAMING PLAN
S301 SCALE: 3/32"=1'-0"