



CJC

drawn by

BWB

checked by

SEPTEMBER 2021

date

revisions

MOORE PUBLIC SCHOOLS
BOARD OF EDUCATION
MOORE, OKLAHOMA



MOORE Public Schools
LEARNING FOR LIFE

CLASSROOM ADDITION
HIGHLAND EAST
JUNIOR HIGH SCHOOL

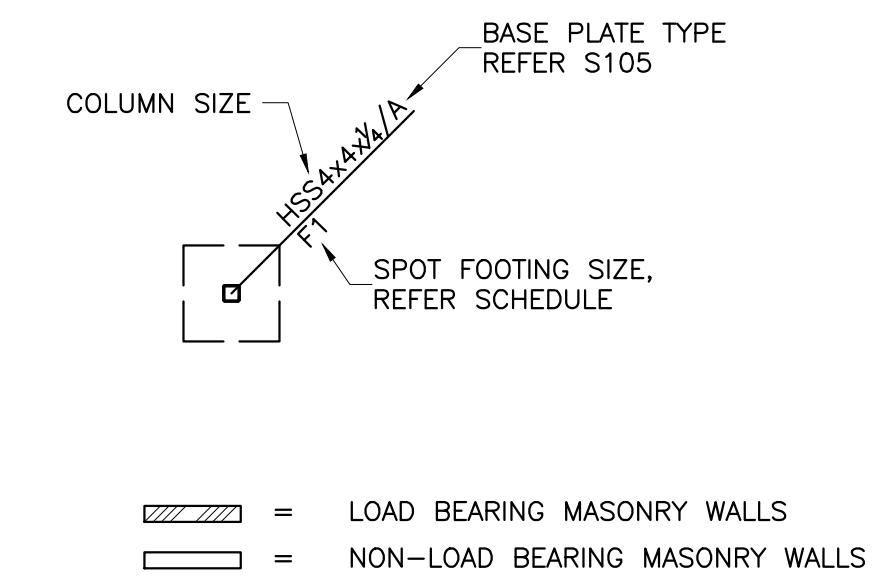
sheet no:

S201



OWNERSHIP USE OF DOCUMENTS:
AGP EXPRESSLY RESERVES ITS
COPYRIGHT AND OTHER PROPERTY
RIGHTS OF ALL PLANS AND DRAWINGS
DESIGNED AND/OR PRODUCED. PLANS
AND DRAWINGS ARE NOT TO BE
REPRODUCED IN ANY FORM OR MANNER
WITHOUT THE EXPRESSED WRITTEN
CONSENT OF AGP.

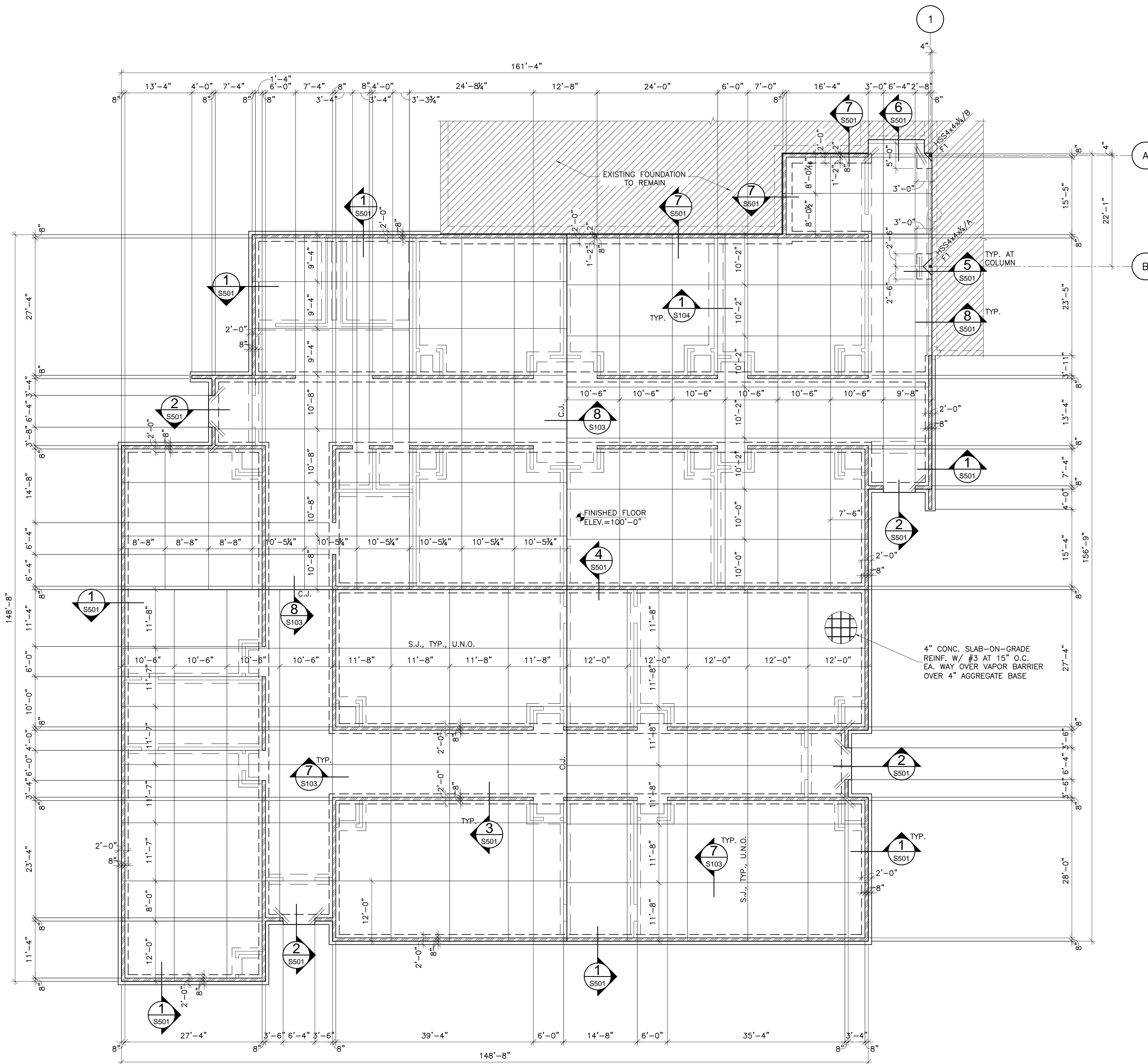
FOUNDATION PLAN LEGEND:



FOUNDATION PLAN NOTES:

- FOUNDATION AND SLAB SUBGRADE SHALL BE PREPARED AS OUTLINED IN THE STRUCTURAL GENERAL NOTES.
- REFERENCE ELEVATION OF 100'-0" EQUALS DATUM FINISHED FLOOR ELEVATION OF 1242.48 FEET FOR THE NEW BUILDING.
- EXCEPT WHERE SHOWN OTHERWISE, SLABS-ON-GRADE SHALL BE 4" THICK CONCRETE REINFORCED WITH #3 BARS AT 15" ON CENTER EACH WAY OVER A 15 MIL VAPOR RETARDER OVER A 4" AGGREGATE BASE COURSE. REINFORCING BARS SHALL BE PLACED 12" CLEAR FROM TOP OF SLAB USING CHAIRS OR SLAB BOLSTERS COMPLYING WITH CRSI'S "MANUAL OF STANDARD PRACTICE".
- SLABS-ON-GRADE SHALL BE WATER CURED FOR A MINIMUM OF 7 DAYS BY PONDING, SPRAYING, SPRINKLING OR BY USE OF SATURATED COVERINGS. THE USE OF CURING COMPOUNDS FOR SLABS-ON-GRADE IS PROHIBITED.
- SAWED JOINTS (SJ) AND REQUIRED CONSTRUCTION JOINTS (CJ) ARE SHOWN ON THE DRAWINGS. AT THE CONTRACTOR'S OPTION, ADDITIONAL CONSTRUCTION JOINTS MAY BE PLACED AT LOCATIONS INDICATED TO BE SAWED JOINTS.
- // INDICATES (2)#4 BARSx4'-0" TO BE PLACED IN SLAB-ON-GRADE AT ALL RE-ENTRANT CORNERS. RE-ENTRANT CORNERS ARE DEFINED AS INTERIOR CORNERS WHERE JOINTS DO NOT OCCUR IN BOTH DIRECTIONS. SIMILAR BARS SHALL BE PLACED AT ANY DISCONTINUOUS ENDS OF SAWED JOINTS OR CONSTRUCTION JOINTS.
- REFER MECHANICAL FOR FLOOR DRAIN (F.D.) INFORMATION.

MARK	SIZE			REINFORCEMENT
	WIDTH	LENGTH	DEPTH	
F1	3'-0"	5'-0"	2'-0"	(4) #5 LONG. TOP AND BOTTOM (6) #5 TRANS. TOP AND BOTTOM



1 FOUNDATION PLAN
S201 SCALE: 3/32"=1'-0"