



KPP
drawn by
AL
checked by
SEPTEMBER 2021
date

revisions

MOORE PUBLIC SCHOOLS
BOARD OF EDUCATION
MOORE, OKLAHOMA



CLASSROOM ADDITION
HIGHLAND EAST
JUNIOR HIGH SCHOOL

sheet no:

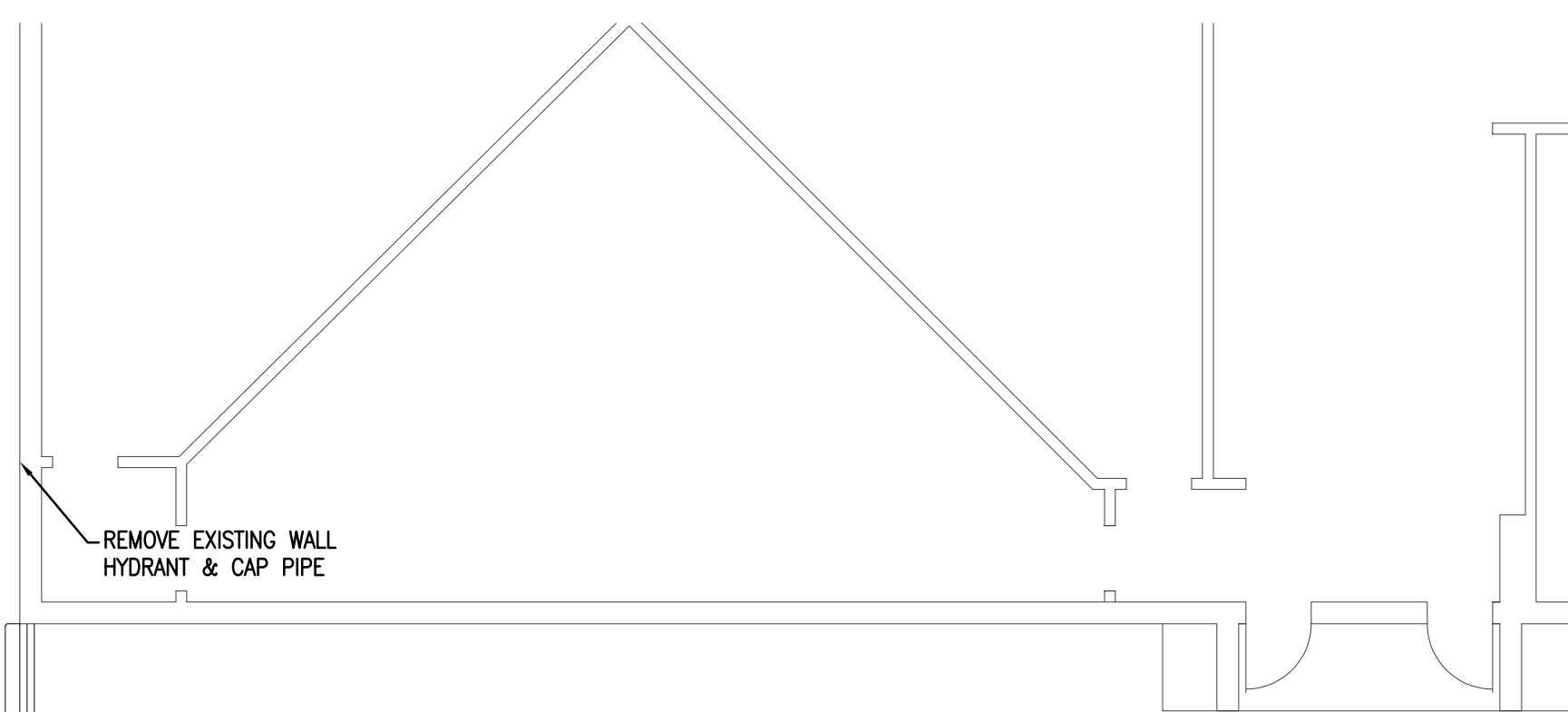
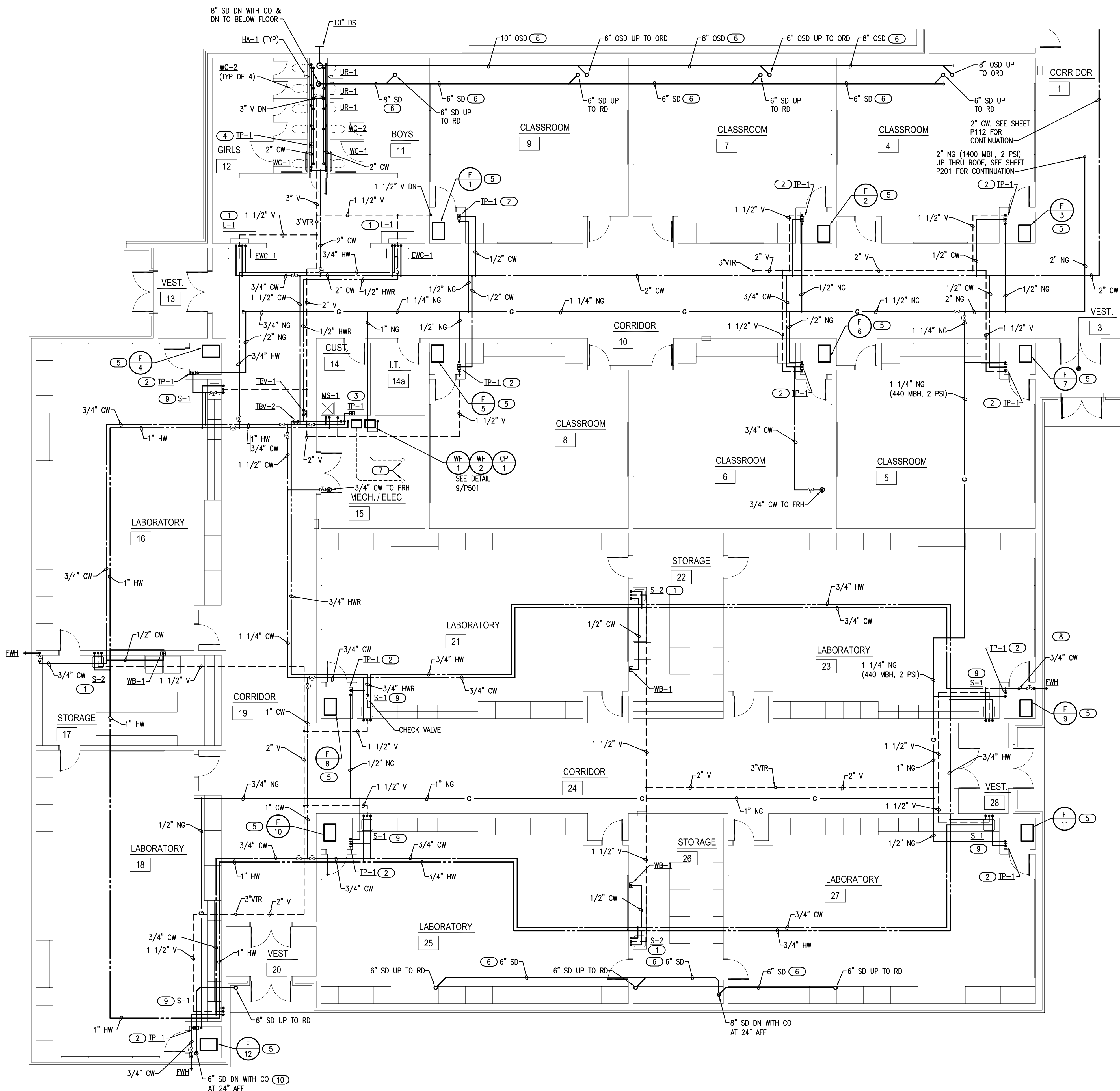
P111

OWNERSHIP USE OF DOCUMENTS:
AGP EXPRESSLY RESERVES ITS
COPYRIGHT AND OTHER PROPERTY
RIGHTS OF ALL PLANS AND DRAWINGS
DESIGNED AND/OR PRODUCED. PLANS
AND DRAWINGS ARE NOT TO BE
REPRODUCED IN ANY FORM OR MANNER
WITHOUT THE EXPRESSED WRITTEN
CONSENT OF AGP.



2600 Van Buren St., Suite 2635
Norman, Oklahoma 73072
P: 405.364.9926 | CAFE: 7058 Expiration Date: 6/30/2023

Salas O'Brien Project No.: 2021-02035-00



- ### GENERAL NOTES
- COORDINATE WORK WITH ALL OTHER TRADES ON SITE.
 - PROVIDE WATER HAMMER ARRESTORS (HA) ON WATER LINES TO FLUSH VALVES, SENSOR FAUCETS AND QUICK CLOSING VALVES. LOCATE UNITS IN ACCESSIBLE LOCATIONS.
 - SINK AND LAVATORY WATER SUPPLY STUB OUTS SHALL BE COPPER PIPE WITH SUPPORT BRACKET FASTENED IN WALL CAVITY.
 - FIRE SEAL ALL PENETRATIONS THRU RATED STRUCTURES TO MAINTAIN FIRE RATING.
 - REFER TO PLUMBING FIXTURE SCHEDULE ON SHEET P601 FOR FIXTURE ROUGH-IN PIPE SIZES.
 - PROVIDE ACCESS PANELS FOR ALL VALVES/DEVICES ABOVE HARD CEILINGS AND BEHIND WALLS.
 - ALL GAS PIPE SHALL COMPLY WITH IFGC. BRANCH LINES SHALL TAP OFF TOP OF GAS MAINS AND INSTALL SHUT-OFF VALVE ON BRANCH LINE.
 - TRAP PRIMER LINES SHALL BE COPPER TYPE "K" OR PEX-g TUBING WITH CONTINUOUS SLOPE TOWARDS DRAIN CONNECTION.
 - COORDINATE HEIGHT OF EXTERIOR FREEZELESS WALL HYDRANT (FWH) WITH GC AND/OR ARCHITECT. SEAL FIXTURE FLANGE WATERTIGHT.

- ### KEYED NOTES
- INSTALL THERMOSTATIC MIXING VALVE (TMV-1) BELOW LAVATORY OR SINK. SEE DETAILS 5/P501 AND 6/P501.
 - PROVIDE 1/2" CW WITH STRAINER TO TRAP PRIMER (TP-1) IN ACCESSIBLE LOCATION IN FURNACE CLOSET. ROUTE 1/2" LINE FROM UNIT TO HUB DRAIN. COORDINATE POWER WITH EC. SEE DETAIL 1/P501.
 - PROVIDE 1/2" CW WITH STRAINER TO TRAP PRIMER (TP-1) IN ACCESSIBLE LOCATION ON WALL IN CUST RM 14. ROUTE (2) 1/2" LINES FROM DISTRIBUTION UNIT TO FLOOR DRAINS IN ROOMS 14 & 15. SEE DETAIL 1/P501.
 - PROVIDE 1/2" CW WITH STRAINER TO TRAP PRIMER (TP-1) IN ACCESSIBLE LOCATION ON WALL IN PLUMBING CHASE. ROUTE (4) 1/2" LINES FROM DISTRIBUTION UNIT TO FLOOR DRAINS IN ROOMS 11 & 12. SEE DETAIL 1/P501.
 - ROUTE 1/2" NATURAL GAS (LOW PRESS) LINE TO FURNACE. PROVIDE BALL VALVE, DRIP LEG, PRESSURE REGULATOR IF REQUIRED AND FINAL UNIT CONNECTION. COORDINATE CONNECTION WITH MC. SEE DETAIL 7/P501.
 - INSULATED STORM DRAIN WITH SLOPE AT 1/8" PER FOOT.
 - WATER HEATER 2" CONCENTRIC VENT UP THRU ROOF.
 - ROUTE 2" NATURAL GAS LINE UP ALONG WALL AND INTO BUILDING ABOVE CEILING. REFER TO SPECIFICATIONS FOR PAINTING GAS LINE. FIRESEAL WALL PENETRATION. PROVIDE WALL PIPE SUPPORTS.
 - INSTALL THERMOSTATIC MIXING VALVE (TMV-1) BELOW LABORATORY SINK. COORDINATE INSTALLATION WITH MILLWORK. SEE DETAIL 8/P501.
 - COORDINATE WITH MC FOR LOCATION OF STORM DRAIN RISER TO AVOID CONFLICT WITH FURNACE AND ALLOW ACCESS TO CLEANOUT ON STORM DRAIN.

1 PLUMBING PLAN - ABOVE GRADE
1/8" = 1'-0"

