



BA
drawn by
DMG
checked by
SEPTEMBER 2021
date
revisions

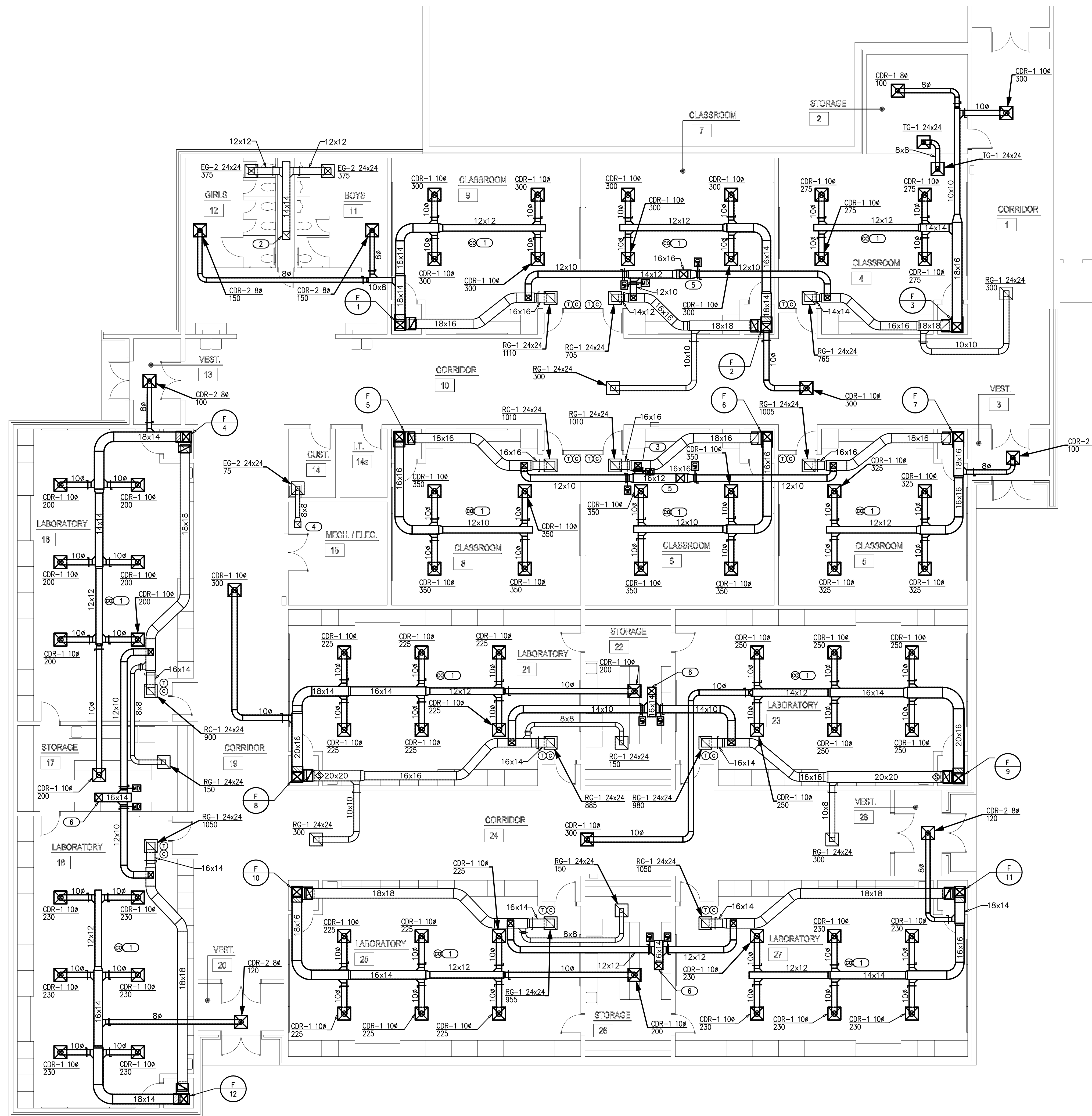
MOORE PUBLIC SCHOOLS
BOARD OF EDUCATION
MOORE, OKLAHOMA



CLASSROOM ADDITION
HIGHLAND EAST
JUNIOR HIGH SCHOOL

sheet no:

M101



GENERAL NOTES

- COORDINATE WORK WITH ALL TRADES.
- COORDINATE LOCATION OF THERMOSTATS AND CARBON MONOXIDE DETECTOR WITH E.C. ROUGH-IN BY E.C.
- COORDINATE CARBON DIOXIDE SENSOR LOCATION WITH EARTHSMART PRIOR TO INSTALLATION.
- M.C. SHALL PROVIDE CARBON MONOXIDE SENSORS WHERE NEEDED PER CODE FOR EXISTING EQUIPMENT THROUGHOUT THE ENTIRE BUILDING. M.C. IS RESPONSIBLE FOR SURVEYING ENTIRE BUILDING AND LOCATING FUEL BURNING HVAC EQUIPMENT FOR SENSOR LOCATIONS. COORDINATE WITH E.C. FOR POWER CONNECTIONS.
- M.C. SHALL ROUTE CONDENSATE TO OPEN SITE AT RESTROOM WALL. COORDINATE WITH P.C. FOR EXACT LOCATION.

KEYED NOTES

- CARBON MONOXIDE DETECTOR TO BE INSTALLED ACCORDING TO ALL APPLICABLE CODES. DETECTOR SHALL BE INSTALLED CENTRALLY ON CEILING. ALSO INCLUDE BATTERY BACKUP IN EVENT PRIMARY POWER IS INTERRUPTED. ALARM SIGNAL SHALL BE ROUTED TO ADMINISTRATION OFFICE. COORDINATE WITH E.C. WITH PRIMARY POWER CONNECTION AND SYSTEM CONNECTION.
- DUCT UP 14 X 14 TO CONNECT TO ROOF EXHAUST OPENING 19 X 19.
- DUCT 12 X 10 INTO RETURN DUCT.
- DUCT UP 12 X 12 TO CONNECT TO ROOF EXHAUST OPENING 19 X 19.
- DUCT UP 16 X 16 TO CONNECT TO ROOF HOOD.
- DUCT UP 16 X 14 TO CONNECT TO ROOF HOOD.

