



DW	_____
drawn by	_____
TVO	_____
checked by	_____
SEPTEMBER 2021	_____
date	_____
revisions	_____

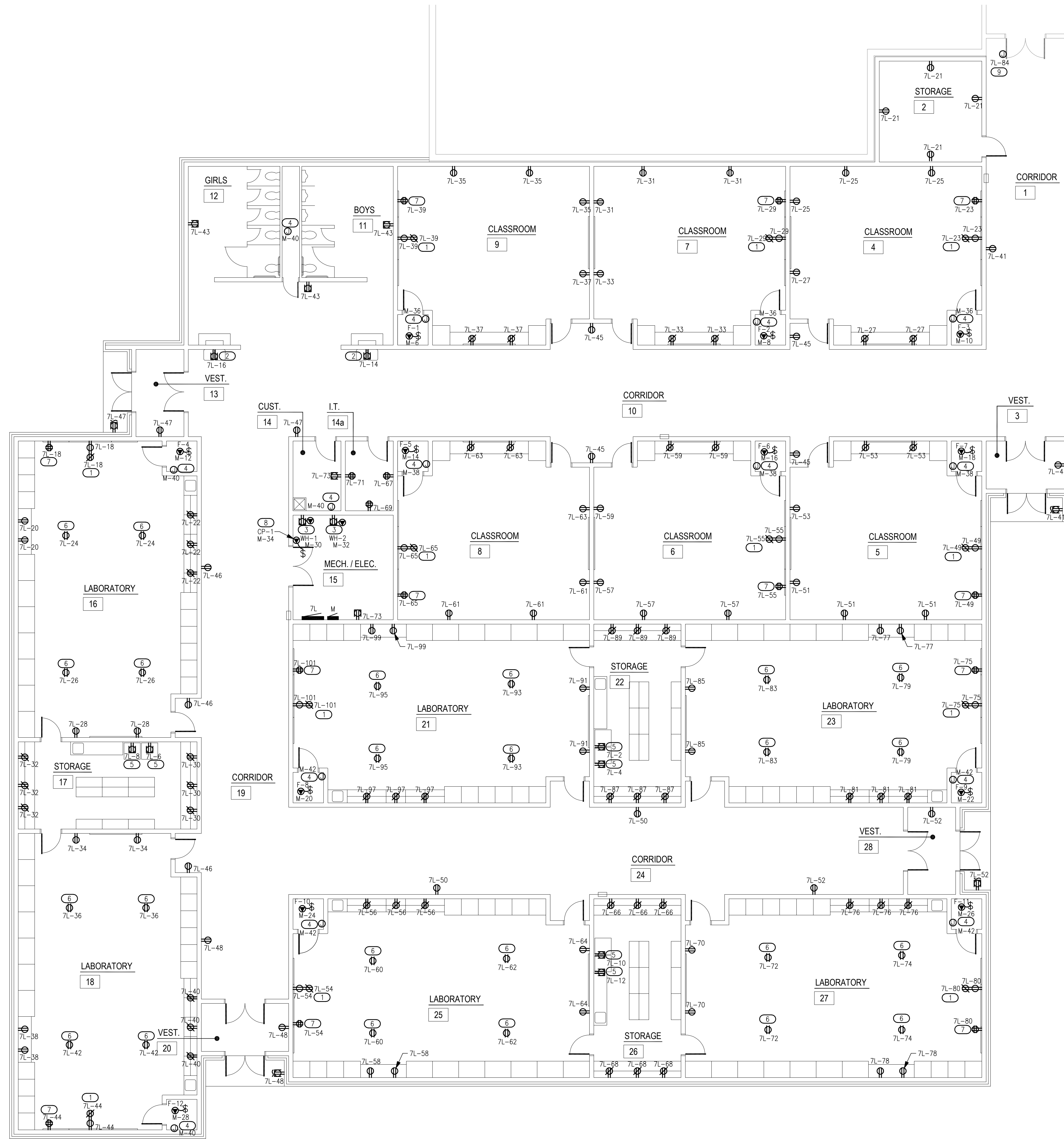
MOORE PUBLIC SCHOOLS  
BOARD OF EDUCATION  
MOORE, OKLAHOMA



CLASSROOM ADDITION  
HIGHLAND EAST  
JUNIOR HIGH SCHOOL

sheet no:

## E201



- ### GENERAL NOTES
- COORDINATE EXACT LOCATIONS OF DEVICES SHOWN WITH OTHER EQUIPMENT. COORDINATE EXACT LOCATIONS OF CEILING MOUNTED DEVICES WITH LIGHTS, HVAC EQUIPMENT, AND OTHER DEVICES.
  - COORDINATE WITH MC AND PROVIDE ALL RELAYS, CONNECTIONS, AND ALL DEVICES NECESSARY TO INTERLOCK EXHAUST FANS, DAMPERS, ETC WITH PROPER CONTROL DEVICES.
  - COORDINATE EXACT LOCATIONS OF MECHANICAL EQUIPMENT WITH MECHANICAL CONTRACTOR.

- ### KEYED NOTES
- RECEPTACLE FOR SMART BOARD (BY OWNER) IN A RECESSED BACK BOX. REFER TO DETAIL 'E501/7' FOR ADDITIONAL INFORMATION.
  - PROVIDE 120V RECEPTACLE FOR WATER COOLER. COORDINATE EXACT LOCATIONS AND REQUIREMENTS WITH OWNER/ARCHITECT PRIOR TO ROUGH IN.
  - PROVIDE 120V RECEPTACLE FOR WATER HEATER. COORDINATE EXACT LOCATIONS AND REQUIREMENTS WITH PLUMBING CONTRACTOR PRIOR TO ROUGH IN.
  - PROVIDE 120V CONNECTION FOR TRAP PRIMER LOCATED ON WALL 5'-0" AFF. COORDINATE EXACT LOCATION AND REQUIREMENTS WITH PLUMBING CONTRACTOR PRIOR TO ROUGH IN.
  - PROVIDE DEDICATED 120V RECEPTACLES FOR FRIDGE & FREEZER. COORDINATE FINAL REQUIREMENTS AND LOCATIONS WITH ARCHITECT/OWNER PRIOR TO ROUGH-IN. ADJUST CONNECTION AS REQUIRED FOR A COMPLETE INSTALLATION.
  - PROVIDE 120V DROP CORD RECEPTACLE FOR GENERAL USE. COORDINATE FINAL LOCATIONS AND REQUIREMENTS WITH OWNER/ARCHITECT PRIOR TO ROUGH-IN. REFER TO DETAIL 'E501/8' FOR ADDITIONAL INFORMATION.
  - APPROXIMATE LOCATION OF TEACHERS DESK. COORDINATE FINAL LOCATION AND REQUIREMENTS WITH OWNER/ARCHITECT PRIOR TO ROUGH-IN. REFER TO DETAIL 'E501/7' FOR ADDITIONAL INFORMATION.
  - PROVIDE 120V CONNECTION FOR CIRCULATION PUMP. CP-1 SHALL SERVE BOTH WH-1 & WH-2. COORDINATE EXACT LOCATION AND REQUIREMENTS WITH PLUMBING CONTRACTOR PRIOR TO ROUGH-IN.
  - PROVIDE 120V CONNECTION FOR DOOR HOLDS. COORDINATE EXACT CONNECTION REQUIREMENTS AND LOCATION WITH THE DOOR INSTALLER/ARCHITECT PRIOR TO ROUGH-IN.

