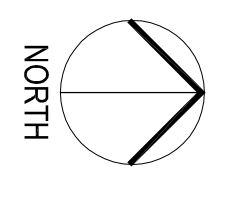
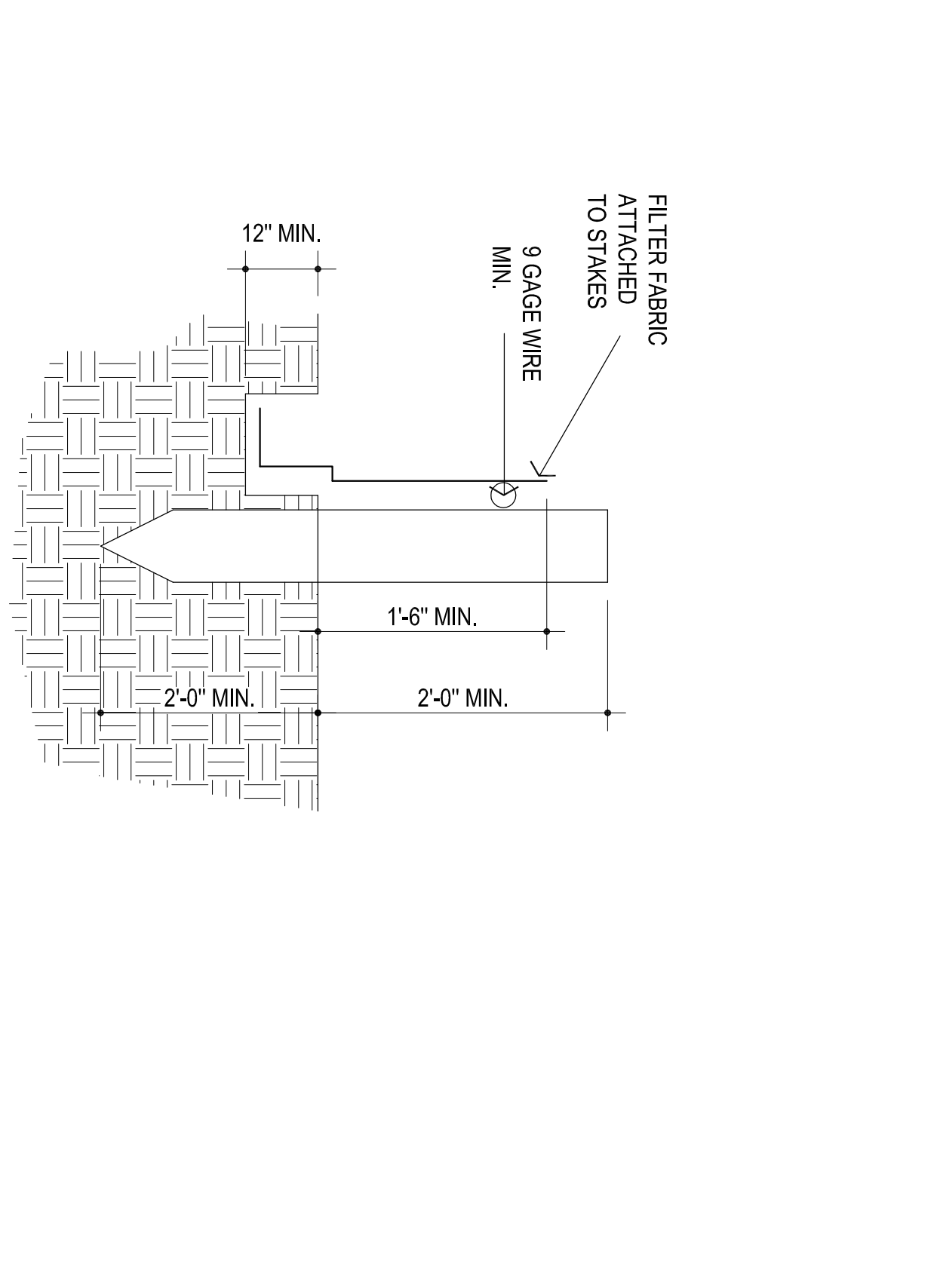
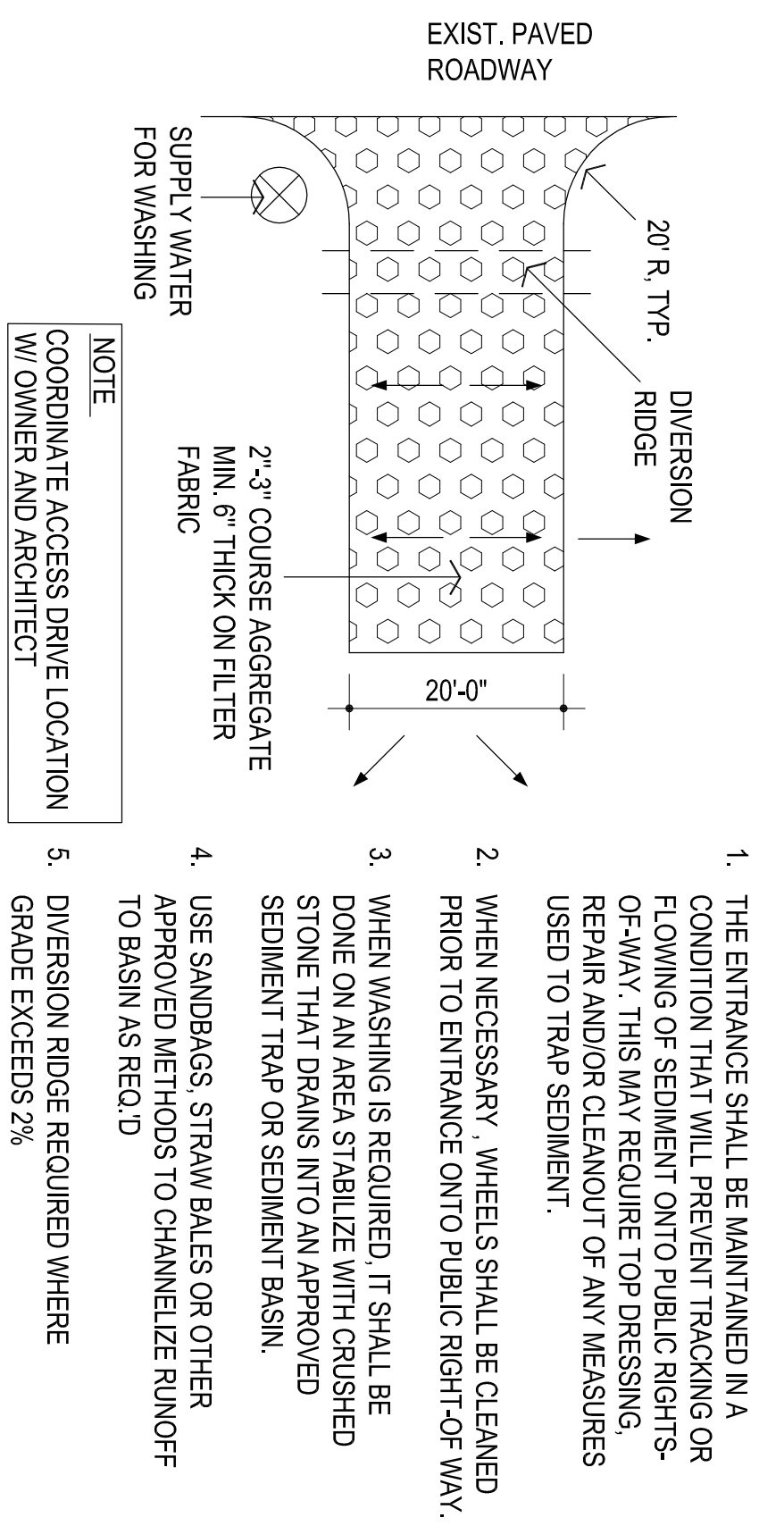


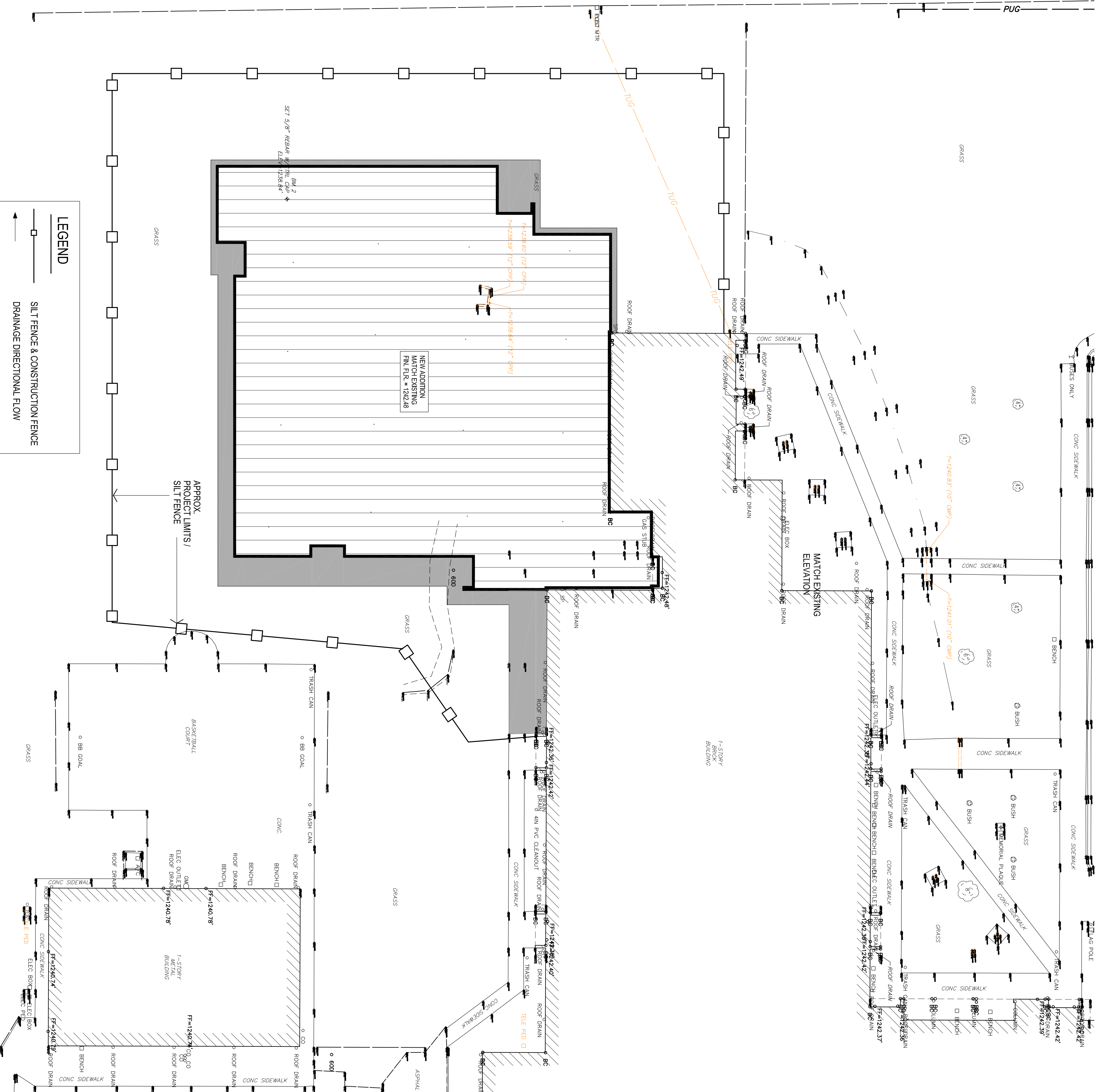
**EROSION CONTROL GENERAL NOTES**

1. INSTALL PERIMETER EROSION CONTROL DEVICES PRIOR TO REMOVING TOP SOIL OR BEGINNING GRADING ACTIVITIES.
2. INSTALL STABILIZED CONSTRUCTION ENTRANCE IN AN AREA DRAINING INTO THE POLLUTION CONTROL SYSTEM
3. AFTER ALL PRECIPITATION OF 0.5 INCHES OR GREATER, EROSION CONTROL FACILITIES SHALL BE INSPECTED AND MAINTAINED AS NECESSARY. COMPLETED INSPECTION FORMS SHALL BE KEPT ON SITE AND MADE AVAILABLE TO THE INSPECTOR UPON REQUEST.
4. THE CONTRACTOR SHALL INSPECT ALL EROSION CONTROL MEASURES AT LEAST ONCE EVERY 7 DAYS. COMPLETED INSPECTION FORMS SHALL BE KEPT ON SITE AND MADE AVAILABLE TO THE INSPECTOR UPON REQUEST.
5. THE CONTRACTOR SHALL BE RESPONSIBLE FOR THE REPAIR OR REPLACEMENT OF ALL EROSION CONTROL DEVICES DAMAGED DUE TO CONSTRUCTION.
6. A COPY OF THE EROSION CONTROL SITE PLAN MUST BE KEPT ON SITE AT ALL TIMES AND MADE AVAILABLE TO THE INSPECTOR UPON REQUEST.
7. MAINTAIN ALL FACILITIES UNTIL ALL PAVEMENT AND/OR GROUND COVER IS ESTABLISHED. ANY DISTURBED AREA WHICH WILL NOT SEE CONSTRUCTION ACTIVITY FOR 21 DAYS OR MORE SHALL BE TEMPORARILY OR PERMANENTLY STABILIZED WITHIN 14 DAYS OF THE LAST DISTURBANCE.
8. A PERSON IN RESPONSIBLE CHARGE SHALL BE AVAILABLE DURING CONSTRUCTION HOURS TO SUPERVISE IMPLEMENTATION AND MAINTENANCE OF THE POLLUTION PREVENTION PLAN AND TO ASSIST WITH INSPECTIONS BY ANY REGULATORY AGENCY.
9. AFTER COMPLETION OF CONSTRUCTION, REMOVE ALL CONTROL DEVICES & MATERIALS, FILL, COMPACT & GRADE ALL DISTURBED SOIL & RE-SOD.



**1**

**EROSION CONTROL SITE PLAN**  
1" = 20'-0"



**LEGEND**

— SILT FENCE & CONSTRUCTION FENCE

— DRAINAGE DIRECTIONAL FLOW



the Abla Griffin Partnership L.L.C.

201 N. BROADWAY  
SUITE 210  
MOORE, OK. 73160  
405.735.3477  
ACGP@theACGP.net  
www.theACGP.net

WDB ENGINEERING PLLC

OWIL

KFC ENGINEERING

STRUCTURAL

SALAS OBRIEN

MECHANICAL ELECTRICAL



CS  
designed by  
MA  
checked by  
SEPTEMBER 2021  
date

MOORE PUBLIC SCHOOLS  
BOARD OF EDUCATION  
MOORE, OKLAHOMA

MOORE Public Schools  
LEARNING FOR LIFE

CLASSROOM ADDITION  
HIGHLAND EAST  
JUNIOR HIGH SCHOOL

Sheet No.  
**C600**

OWNERSHIP USE OF DOCUMENTS:  
AGP EXPRESSLY RESERVES ITS COPYRIGHT AND OTHER PROPERTY RIGHTS OF ALL PLANS AND DRAWINGS DESIGNED AND/OR PRODUCED BY AGP. ANY REPRODUCTION OR REUSE OF ANY PARTS OF THIS DOCUMENT WITHOUT THE EXPRESSED WRITTEN CONSENT OF AGP.