

CONSTRUCTION DATA (TABLE 504.4):

OCCUPANCY -	E
CONSTRUCTION TYPE -	TYPE II - B
BASIC ALLOWABLE AREA -	58,000 S.F. SPRINKLED ONE STORY
ALLOWABLE STORIES -	3
ACTUAL STORIES -	1
ACTUAL HEIGHT -	16'-8"

BUILDING SIZES:  
ADDITION: 1 STORY @ 21,582 S.F.

STRUCTURAL FIRE PROTECTION (TABLE 601):	
EXTERIOR BEARING WALLS	0 HOUR
INTERIOR BEARING WALLS	NONCOMBUSTIBLE
EXTERIOR NONBEARING WALLS	NONCOMBUSTIBLE
COLUMNS	0 HOUR
BEAMS	0 HOUR
PERMANENT PARTITIONS	NONCOMBUSTIBLE
FLOOR ASSEMBLIES	0 HOUR
ROOF ASSEMBLIES	0 HOUR
EXTERIOR OPENINGS	N/A

PASSIVE FIRE SAFETY SYSTEM:  
PORTABLE FIRE EXTINGUISHERS (RE: SHEETS A109)  
TRAVEL DISTANCE = 250'-0" MAX.  
DEADEND - 50'-0" MAX.  
ACTUAL DEADEND - 40'-0" FROM ROOM #33 TO EXISTING

ACTIVE FIRE SAFETY SYSTEMS:  
FIRE SPRINKLER SYSTEM THROUGHOUT NEW ADDITION  
FIRE ALARM SYSTEM  
SMOKE DETECTION  
AUTOMATIC AIR HANDLING EQUIP. SHUTDOWN  
EXIT LIGHTS/EMERGENCY LIGHTS BATTERY

CODES/REGULATIONS USED (CITY OF MOORE) AUTHORITY HAVING JURISDICTION:  
2013 IBC - INTERNATIONAL BUILDING CODE  
2013 IRC - INTERNATIONAL RESIDENTIAL BUILDING CODE  
AMERICAN WITH DISABILITIES ACT ACCESSIBILITY GUIDELINES  
2014 NATIONAL ELECTRICAL CODE  
2015 INTERNATIONAL PLUMBING CODE  
2015 INTERNATIONAL MECHANICAL CODE  
2015 INTERNATIONAL FIRE CODE  
2015 ENERGY CONSERVATION CODE  
ASSOCIATED SUPPLEMENTS TO EACH CODE

OCCUPANT LOAD (TABLE 1004.1.2):

CLASSROOM AREA NET 7,080 S.F. / 20 NET = 354 OCCUPANTS  
STORAGE AREA 2,143 / 300 = 8 OCCUPANTS  
TOTAL OCCUPANTS = 362  
EGRESS WIDTH:

ADDITION: REQUIRED 73'  
ADDITION: PROVIDED 288'

PLUMBING FIXTURES (2902.1):

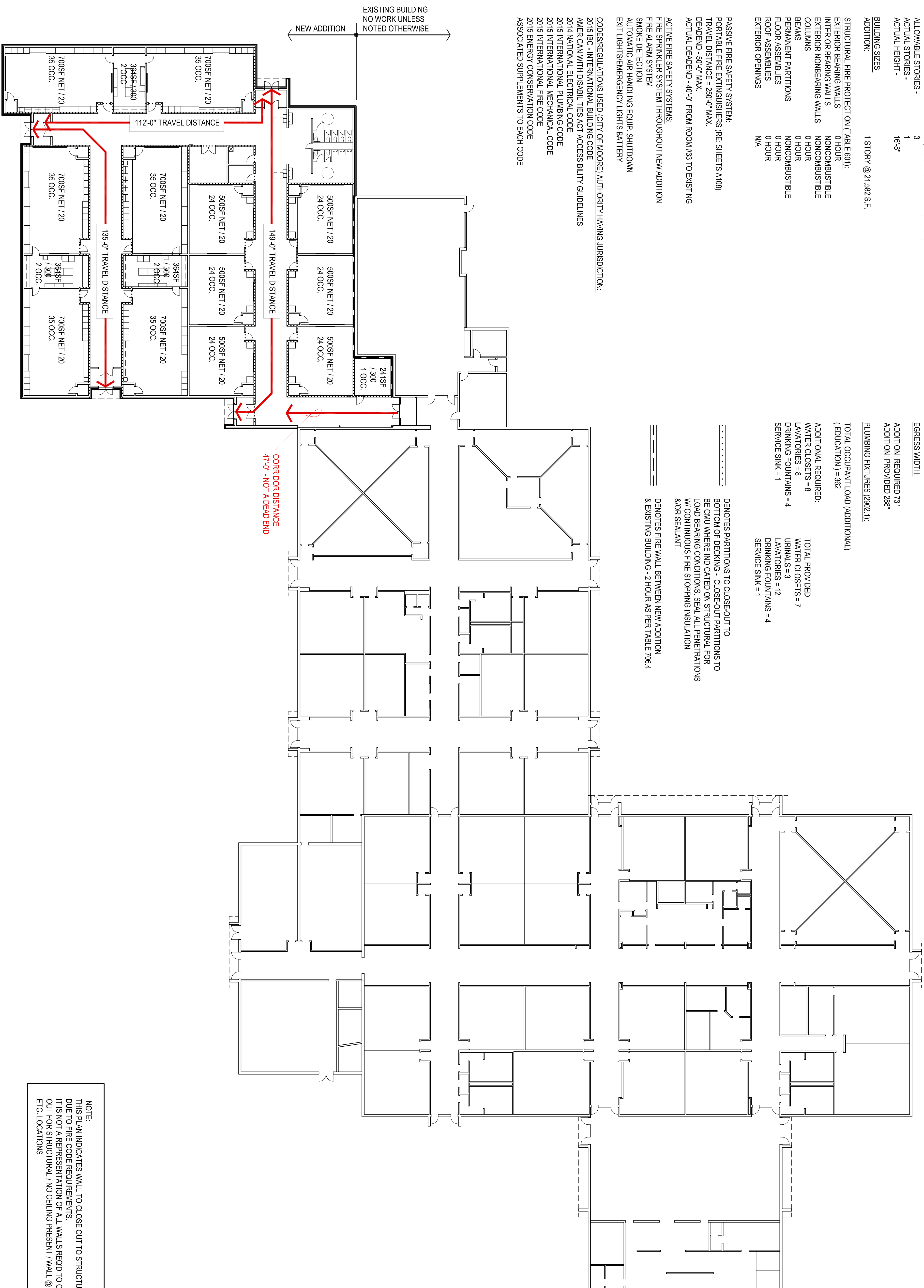
TOTAL OCCUPANT LOAD (ADDITIONAL)  
(EDUCATION) = 362

ADDITIONAL REQUIRED:  
WATER CLOSETS = 8  
LAVATORIES = 8  
DRINKING FOUNTAINS = 4  
SERVICE SINK = 1

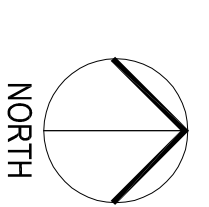
TOTAL PROVIDED:  
WATER CLOSETS = 7  
URINALS = 3  
LAVATORIES = 12  
DRINKING FOUNTAINS = 4  
SERVICE SINK = 1

..... DENOTES PARTITIONS TO CLOSE-OUT TO  
BOTTOM OF DECKING - CLOSE-OUT PARTITIONS TO  
BE ONLY WHERE INDICATED ON STRUCTURAL FOR  
LOAD BEARING CONDITIONS. SEAL ALL PENETRATIONS  
W/ CONTINUOUS FIRE STOPPING INSULATION  
& OR SEALANT.

===== DENOTES FIRE WALL BETWEEN NEW ADDITION  
& EXISTING BUILDING - 2 HOUR AS PER TABLE 706.4



NOTE:  
THIS PLAN INDICATES WALL TO CLOSE OUT TO STRUCTURE  
DUE TO FIRE CODE REQUIREMENTS.  
IT IS NOT A REPRESENTATION OF ALL WALLS BEGDD TO CLOSE  
OUT FOR STRUCTURAL / NO CEILING PRESENT / WALL @ "CLOUDS"  
ETC. LOCATIONS



1

LIFE SAFETY PLAN  
1" = 20'-0"



the Abila Griffin  
Partnership L.L.C.

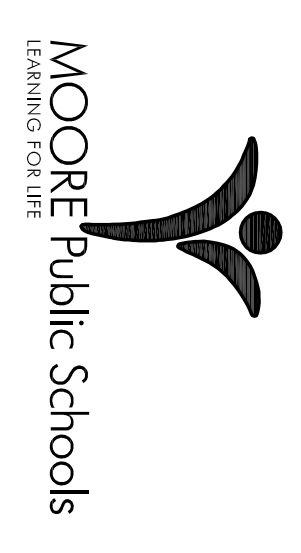
201 N. BROADWAY  
SUITE 210  
MOORE, OK, 73160  
405.735.3477  
AGP@theACGP.net  
www.theACGP.net

WDB ENGINEERING PLLC  
CIVIL  
KFC ENGINEERING  
STRUCTURAL  
SALAS ORRLEN  
MECHANICAL/ELECTRICAL



CC \_\_\_\_\_  
drawn by \_\_\_\_\_  
MA \_\_\_\_\_  
checked by \_\_\_\_\_  
date SEPTEMBER 2021  
revisions \_\_\_\_\_

MOORE PUBLIC SCHOOLS  
BOARD OF EDUCATION  
MOORE, OKLAHOMA



CLASSROOM ADDITION  
HIGH AND EAST  
JUNIOR HIGH SCHOOL

Sheet No:  
**A100**

OWNERSHIP USE OF DOCUMENTS:  
AGP EXPRESSLY RESERVES ITS  
COPYRIGHT AND OTHER PROPERTY  
RIGHTS OF ALL PLANS AND DRAWINGS  
DESIGNED AND/OR PRODUCED. PLANS  
REPRODUCED IN ANY FORM OR MANNER  
WITHOUT THE EXPRESSED WRITTEN  
CONSENT OF AGP.