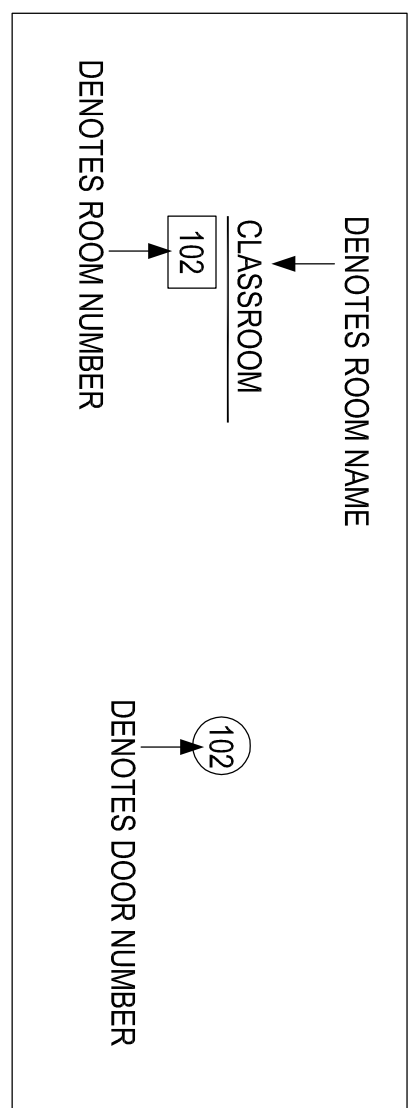
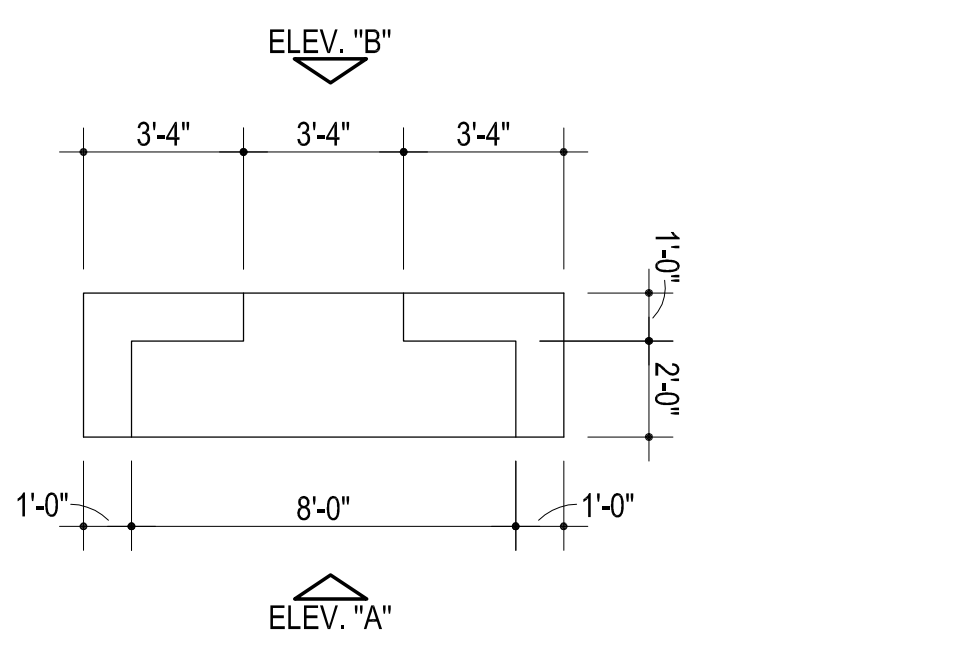


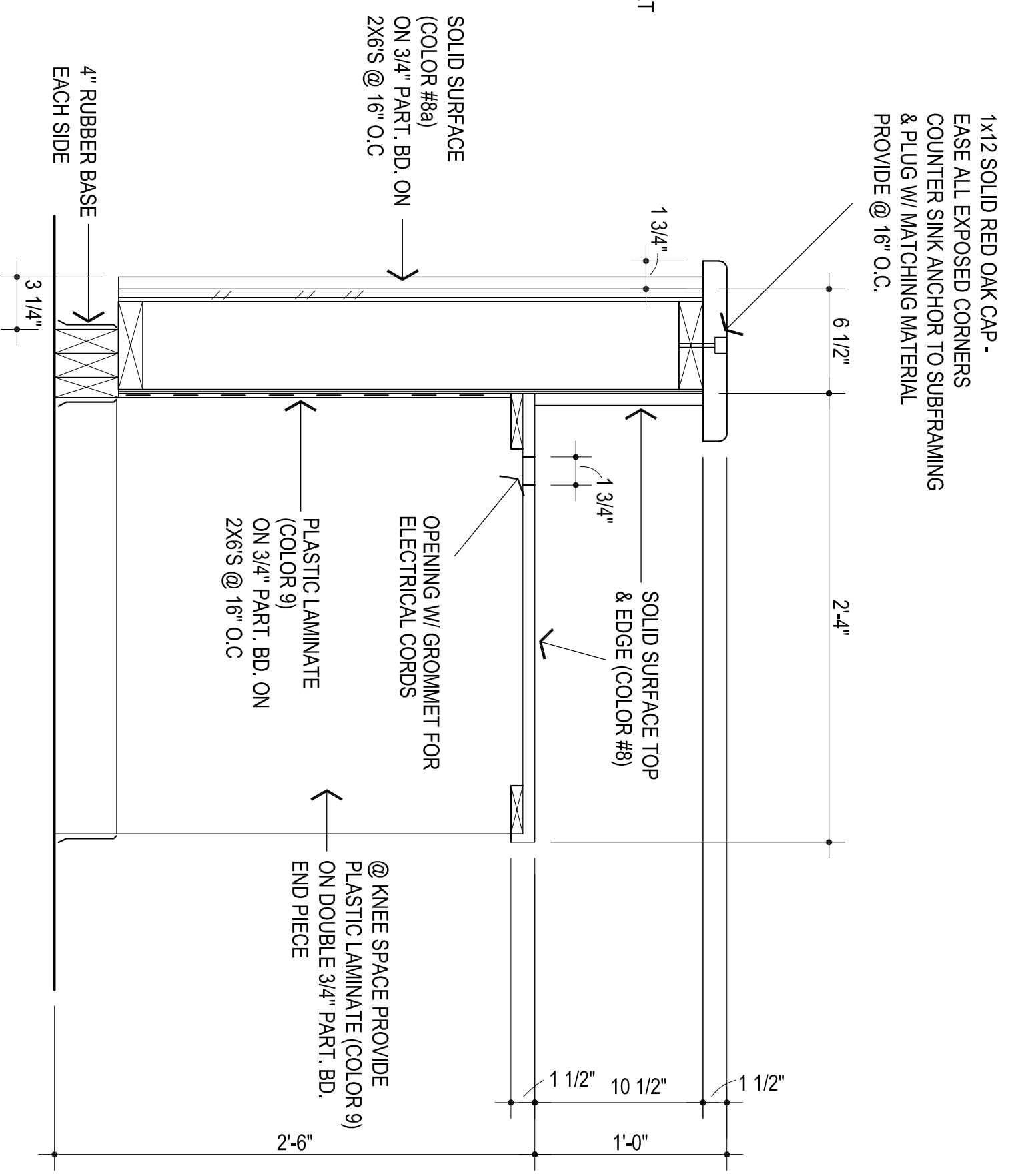
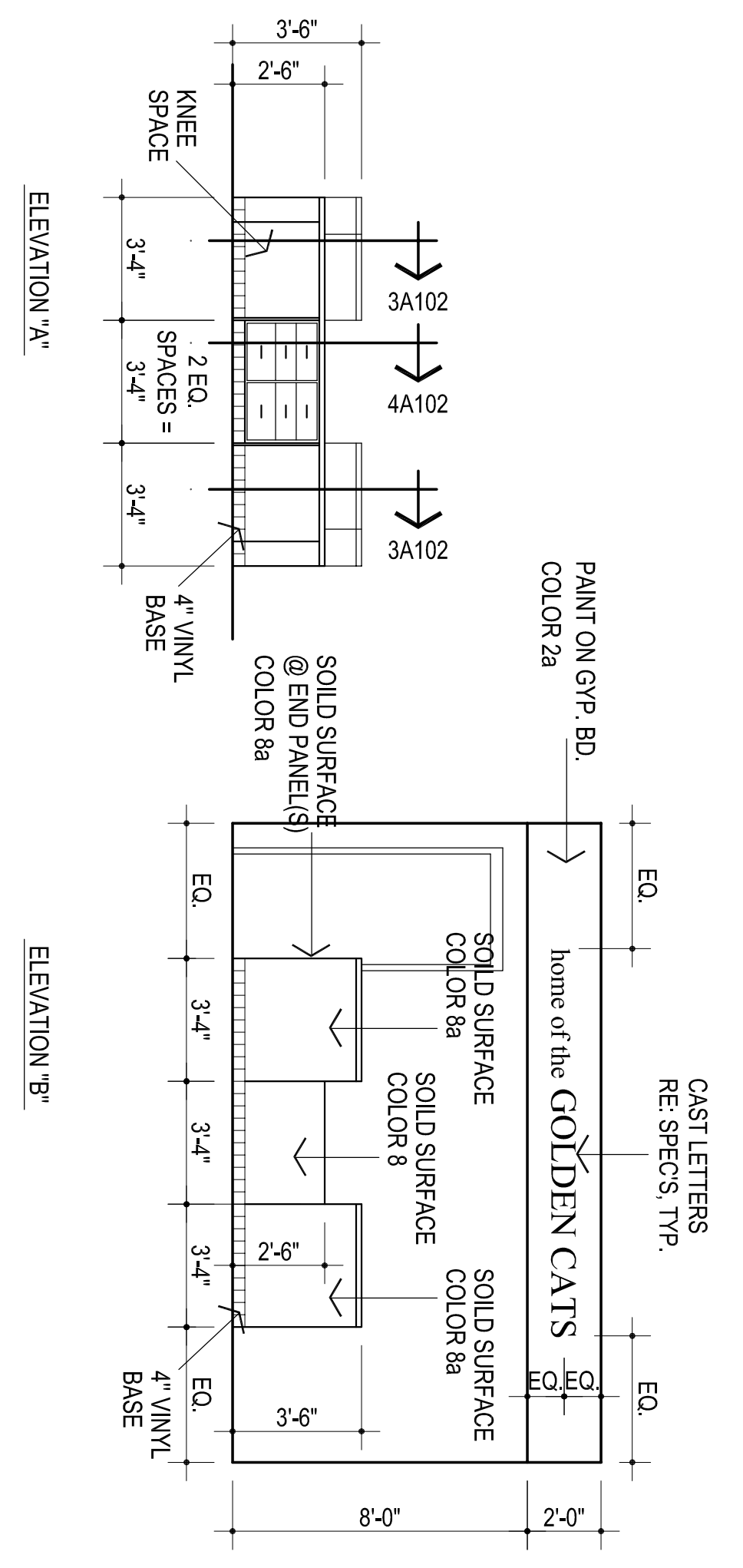
1 FLOOR PLAN
1/8" = 1'-0"
963 sq. ft.



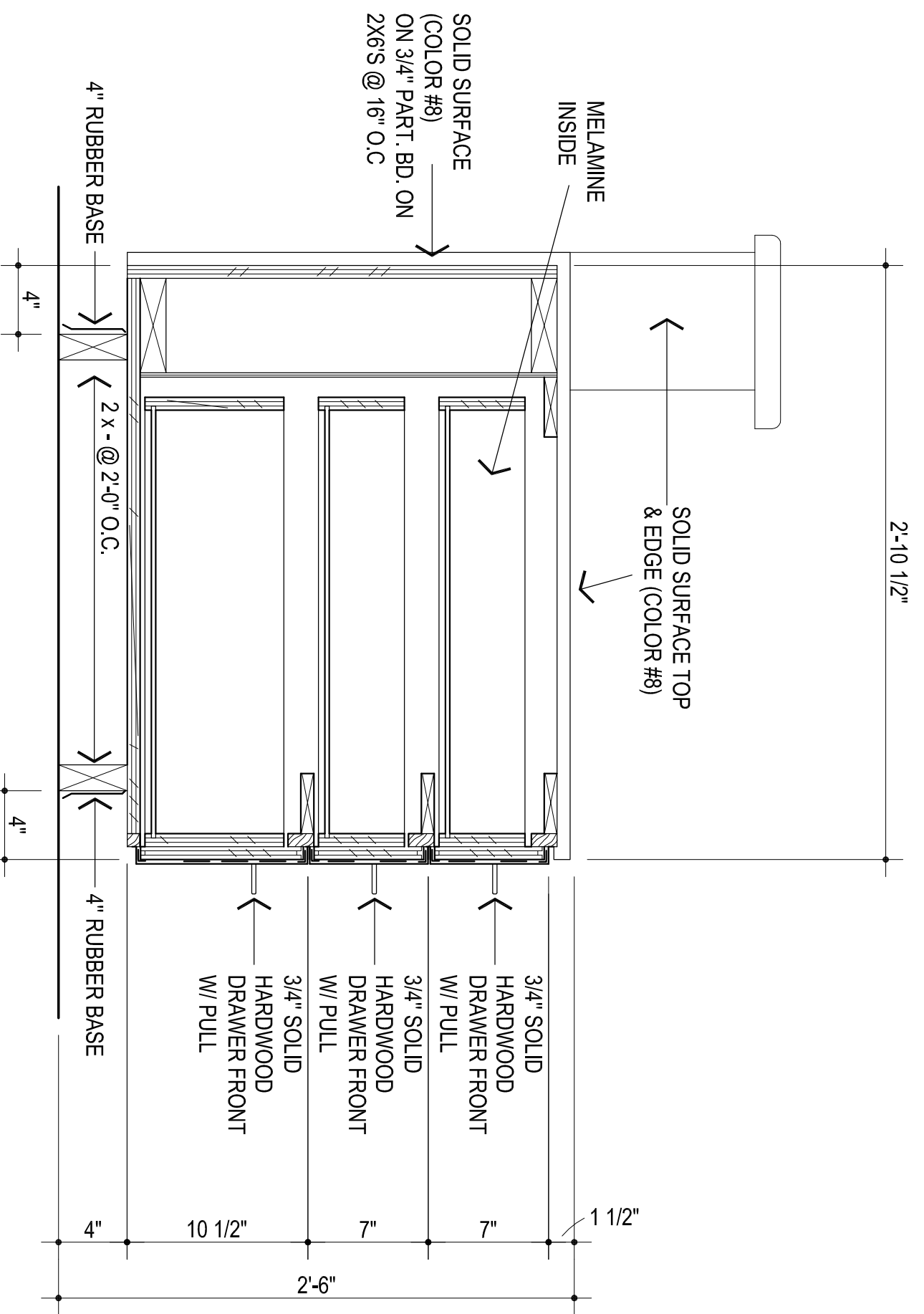
- MISCELLANEOUS NOTES:
1. F.E.C. - FIRE EXTINGUISHER AND CABINET
 2. EXISTING COLUMNS TO REMAIN PAINT TO MATCH NEW WALLS



2 MILLWORK ROOM #3
1/4" = 1'-0"



3 SECTION @ COUNTER
1 1/2" = 1'-0"



4 SECTION @ COUNTER
1 1/2" = 1'-0"



CS
drawn by
MA
checked by
SEPTEMBER 2023
date
revisions

MOORE PUBLIC SCHOOLS
BOARD OF EDUCATION
MOORE, OKLAHOMA

MOORE Public Schools
LEARNING FOR LIFE

OFFICE ADDITION
FAIRVIEW
ELEMENTARY SCHOOL

A102

OWNERSHIP USE OF DOCUMENTS:
AGP EXPRESSLY RESERVES ITS
COPYRIGHT AND OTHER PROPERTY
RIGHTS OF ALL PLANS AND DRAWINGS
DESIGNED AND/OR PRODUCED HEREIN.
REPRODUCTION IN ANY FORM OR MANNER
WITHOUT THE EXPRESSED WRITTEN
CONSENT OF AGP.