

**MOORE PUBLIC SCHOOLS -
FAIRVIEW ELEMENTARY SCHOOL –
OFFICE ADDITION**

Moore Public Schools - Moore, Oklahoma
AGP - Moore, Oklahoma

CONSTRUCTION BULLETIN NO. 2

February 27, 2024

REVISED 2-28-24

1. OMIT DOOR #6 IN ITS ENTIRETY.
2. REVISE DOOR HARDWARE FOR DOORS #5 (4a) AND #8 (5a) AS PER ATTACHED SETS. VERIFY CHANGES WITH OWNER'S HARDWARE COORDINATOR / CONTACT.
3. REVISE DOOR SWING FOR DOOR #8 AS PER ATTACHED DRAWINGS.

END OF CONSTRUCTION BULLETIN NO. 2

DIVISION 8 - DOORS & WINDOWS

SECTION 08700 - FINISH HARDWARE

REVISIONS NOTED IN RED - CONSTRUCTION BULLETIN CB-2 - REVISED 2-28-24

2.02 Hardware Sets:

Hardware Group No. 004: Provide each SGL door(s) with the following:

Quantity	Description	Model Number	Finish	Mfr
3	EA HINGE	5BB1 4.5 X 4.5	652	IVE
1	EA OFFICE LOCK	L9050T 03N	626	SCH
1	EA CLASSIC CORE	23-030	626	SCH
1	EA STOP	WS407CCV OR FS436 AS REQUIRED	628	IVE
3	EA SILENCER	SR64	GRY	IVE
1	EA SURFACE CLOSER	4041 OR P4041 MTG BRKTS,	SPCRS & PLATES AS REQ	
			689	LCN
1	EA KICK PLATE	8400 10" X 1" LDW	630	IVE

REFER TO ELECTRICAL FOR ACCESS, CARD READER, ETC. INFORMATION.

Hardware Group No. 004a: Provide each SGL door(s) with the following:

Quantity	Description	Model Number	Finish	Mfr
3	EA HINGE	5BB1 4.5 X 4.5	652	IVE
1	EA OFFICE LOCK	L9050T 03N	626	SCH
1	EA CLASSIC CORE	40-100	626	SCH
1	EA STOP	WS407CCV OR FS436 AS REQUIRED	628	IVE
3	EA SILENCER	SR64	GRY	IVE
1	EA SURFACE CLOSER	4041 OR P4041 MTG BRKTS,	SPCRS & PLATES AS REQ	
			689	LCN
1	EA KICK PLATE	8400 10" X 1" LDW	630	IVE

REFER TO ELECTRICAL FOR ACCESS, CARD READER, ETC. INFORMATION.

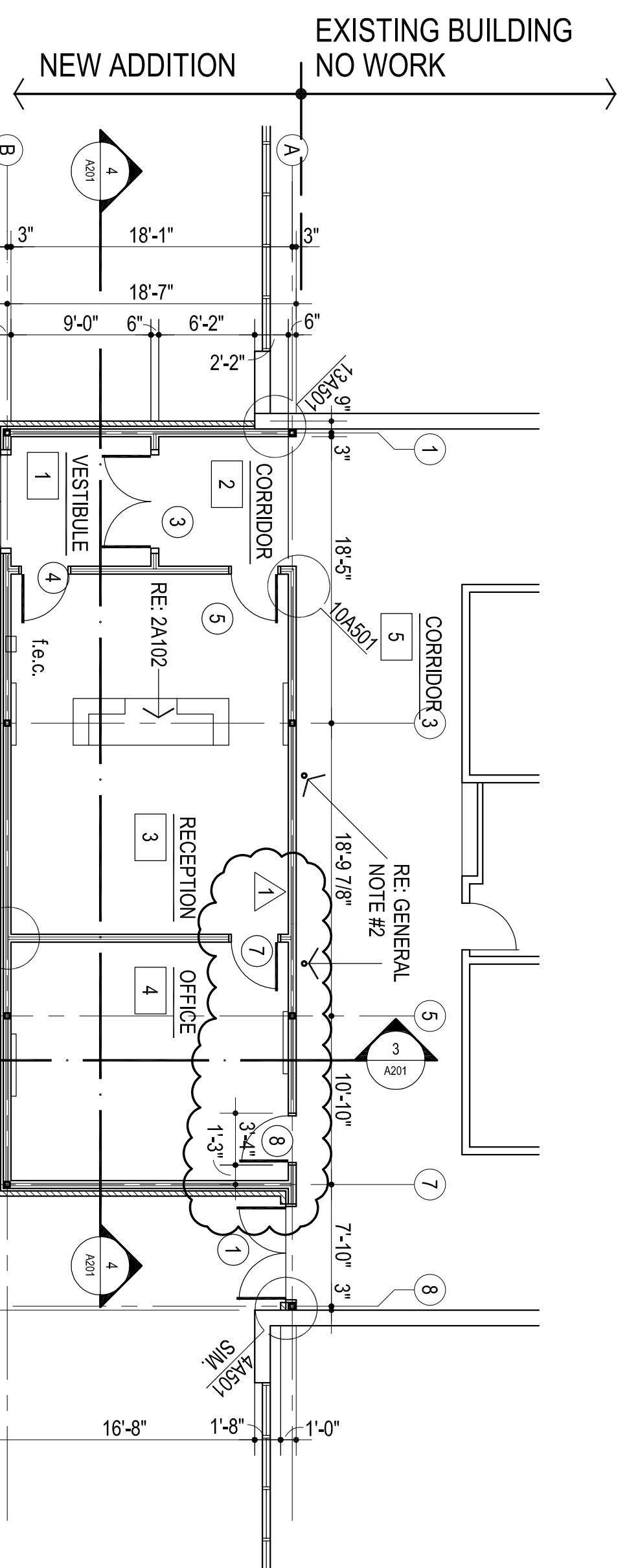
Hardware Group No. 005: Provide each SGL door(s) with the following:

Quantity	Description	Model Number	Finish	Mfr
3	EA HINGE	5BB1 4.5 X 4.5	652	IVE
1	EA OFFICE LOCK	L9050T 03N	626	SCH
1	EA CLASSIC CORE	23-030	626	SCH
1	EA STOP	WS407CCV OR FS436 AS REQUIRED	628	IVE
3	EA SILENCER	SR64	GRY	IVE

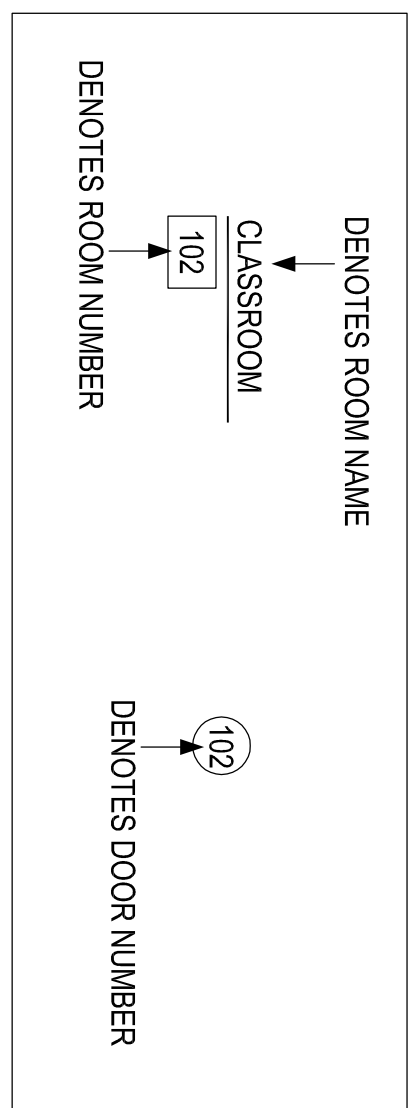
Hardware Group No. 005a: Provide each SGL door(s) with the following:

Quantity	Description	Model Number	Finish	Mfr
3	EA HINGE	5BB1 4.5 X 4.5	652	IVE
1	EA LOCKSET	ND66C RHO 10-025	626	SCH
1	EA CLASSIC CORE	40-100	626	SCH
1	EA STOP	WS407CCV OR FS436 AS REQUIRED	628	IVE
3	EA SILENCER	SR64	GRY	IVE

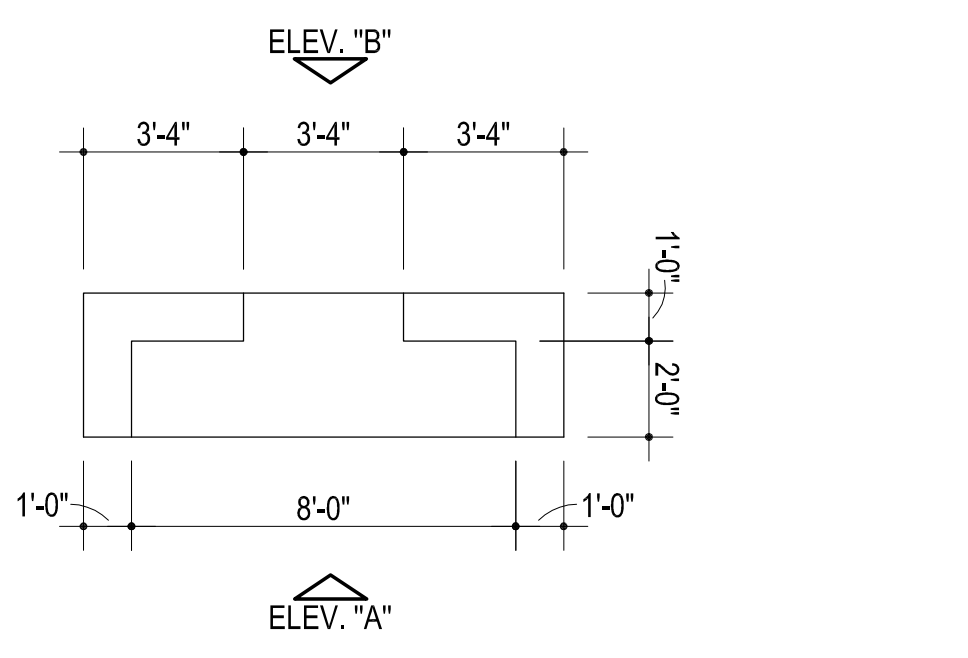
Please note - CM to provide ALL connections required to the fire alarm, security, and electrical systems necessary for fully functioning devices meeting all applicable codes and standards.



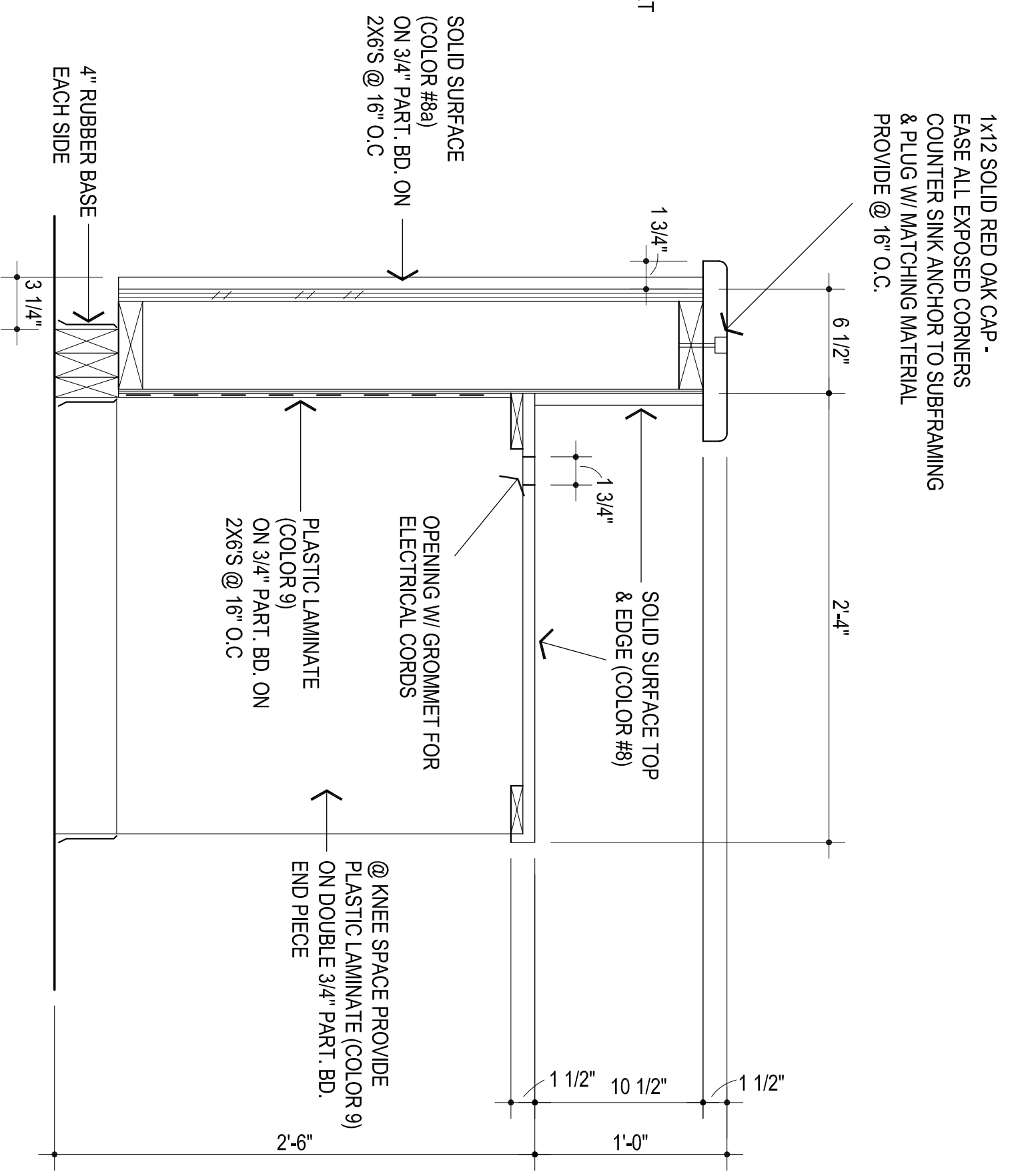
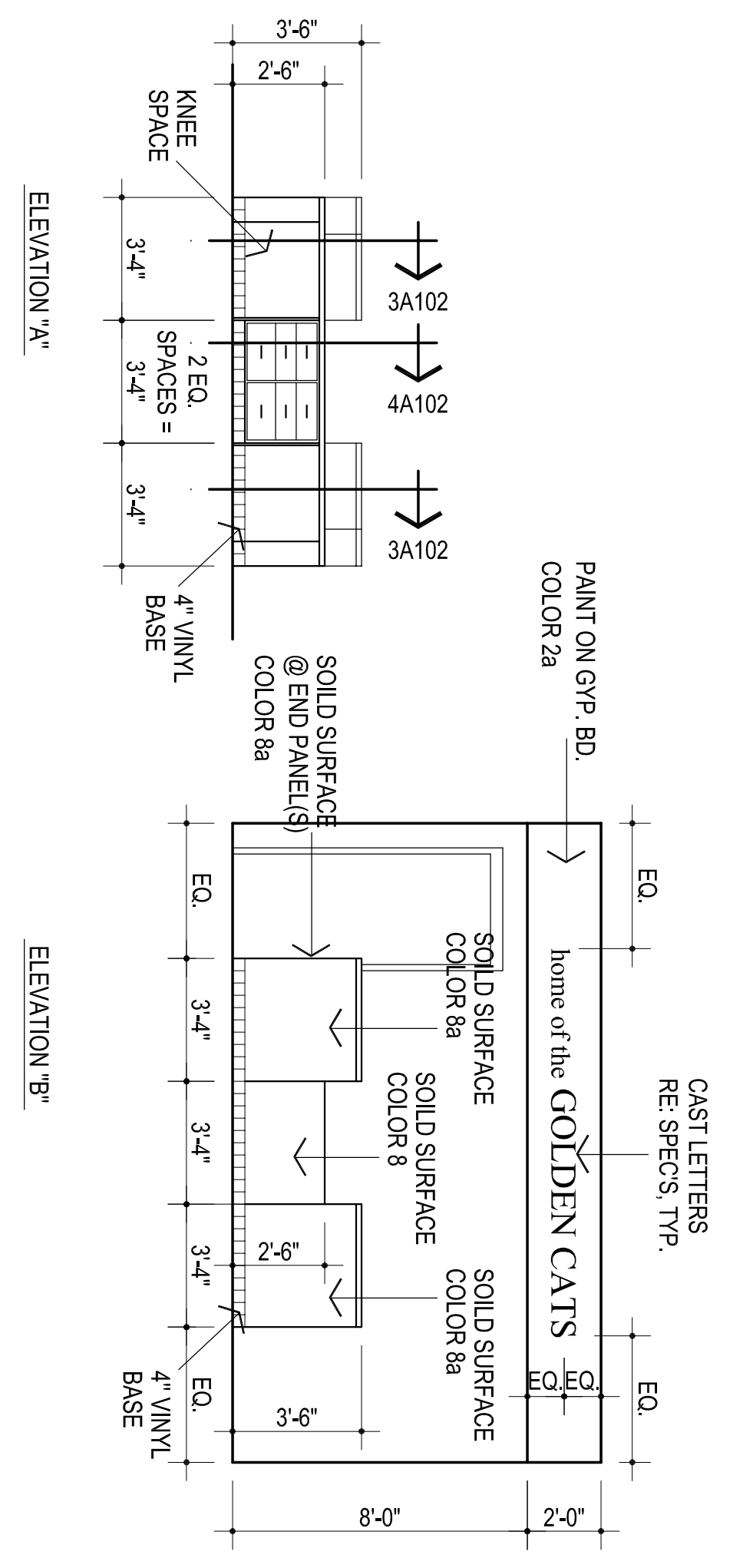
1 FLOOR PLAN
1/8" = 1'-0"
993 sq. ft.



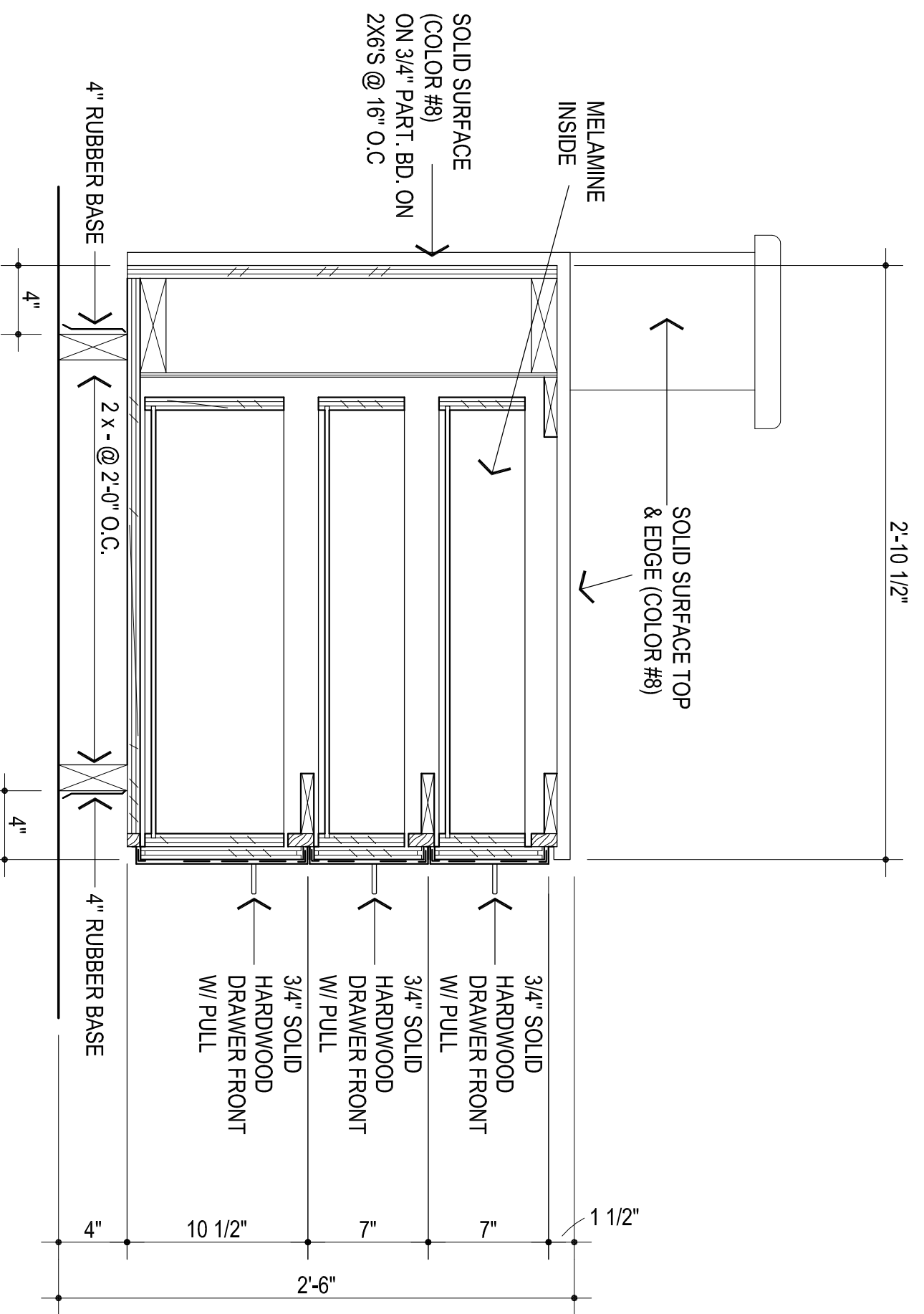
- MISCELLANEOUS NOTES:
1. F.E.C. - FIRE EXTINGUISHER AND CABINET
 2. EXISTING COLUMNS TO REMAIN PAINT TO MATCH REV. WALLS
 3. REVERSE DOOR HARDWARE SET - 4a
 4. REVERSE DOOR HARDWARE SET - 5a



2 MILLWORK ROOM #3
1/4" = 1'-0"



3 SECTION @ COUNTER
1 1/2" = 1'-0"



4 SECTION @ COUNTER
1 1/2" = 1'-0"



the Abla Griffin Partnership L.L.C.

201 N. BROADWAY
SUITE 210
MOORE, OK. 73160
405.735.3477
ACGP@theACGP.net
www.theACGP.net

KFC ENGINEERING
STRUCTURAL
SALUS O'BRIEN
MECHANICAL ELECTRICAL



CS
drawn by
MA
checked by
SEPTEMBER 2023
date
revisions
08-2

MOORE PUBLIC SCHOOLS
BOARD OF EDUCATION
MOORE, OKLAHOMA
LEARNING FOR LIFE
Moore Public Schools

OFFICE ADDITION
FAIRVIEW
ELEMENTARY SCHOOL

A102

OWNERSHIP USE OF DOCUMENTS:
ACGP EXPRESSLY RESERVES ITS
COPYRIGHT AND OTHER PROPERTY
RIGHTS OF ALL PLANS AND DRAWINGS
DESIGNED AND/OR PRODUCED HEREIN.
REPRODUCTION IN ANY FORM OR MANNER
WITHOUT THE EXPRESSED WRITTEN
CONSENT OF ACP.

