

GRILLE, REGISTER, AND DIFFUSER SCHEDULE					
PLAN SYMBOL	DESCRIPTION	MANUFACTURER & MODEL NO.	MATERIAL	FINISH	NOISE CRITERIA
CDR-1	SQUARE FACE, ROUND NECK, 4-WAY DEFLECTION CEILING DIFFUSER, SPRING LOCK INNER CORE, FOR LAY-IN CEILING INSTALLATION.	PRICE SCD (4C)	STEEL	WHITE	-
RG-1	SQUARE PATTERN GRILLE, FIXED CORE OF 1/2"x1/2"x1/2" FABRICATED ALUMINUM SQUARES, FLAT FRAME WITH 1 1/4" MARGIN, FOR LAY-IN CEILING INSTALLATION.	PRICE 80	ALUMINUM	WHITE	-

NOTES:
SEE PLANS FOR QUANTITY AND SIZES.
M.C. TO FIELD VERIFY CEILING TYPE FOR ALL GRD BEFORE PURCHASING EQUIPMENT. PROVIDE REQUIRED MOUNTING.

SYSTEM	LOW PRESSURE			MED. PRESS		HIGH PRESS.		INSULATION				NOTES
	MAX. PRES.	SEAL		MAX. PRES.	SEAL A	MAX. PRES.	SEAL A	INTERNAL	THICKNESS	EXTERNAL	THICKNESS	
		A	B									
SUPPLY AIR WITHIN 10' OF UNIT	2"	X	-	-	-	-	-	YES	1"	NO	-	-
SUPPLY AIR BEYOND 10' OF UNIT	2"	X	-	-	-	-	-	NO	-	YES	2" FSK	-
RETURN AIR WITHIN 10' OF UNIT	2"	-	X	-	-	-	-	YES	1"	NO	-	-
RETURN AIR BEYOND 10' OF UNIT	2"	-	X	-	-	-	-	NO	-	YES	2" FSK	-
OUTSIDE AIR/MIXED AIR	2"	-	X	-	-	-	-	NO	-	YES	3" FSK	-
EXHAUST AIR	2"	-	X	-	-	-	-	NO	-	YES	2" FSK	-

NOTES:

PACKAGED ROOFTOP GAS/ELECTRIC UNIT SCHEDULE															
RTU #	LOCATION	INPUT MBH	OUTPUT MBH	COOLING NOMINAL TONS	MIN EER	CAPACITY STAGES	TOTAL CFM	MIN F.A. CFM	ELEC CHAR	MCA	MOP	ESP (IN)	WEIGHT	MANUFACTURER & MODEL NUMBER	NOTES
1	ROOF-SEE PLANS	130	104	8.5	12.5	2(H)/4(C)	3400	1200	208 / 3	42	50	1.0	1500	LENNOX LGM102U5E	1-12

NOTES: M.C. IS RESPONSIBLE FOR PROVIDING ANY AND ALL NECESSARY DIMENSIONAL, ELECTRICAL, MECHANICAL, AND STRUCTURAL ALTERATIONS NECESSARY BY PROVIDING ALTERNATE EQUIPMENT.

- PROVIDE CONDENSER COIL HAIL GUARD.
- PROVIDE FACTORY-INSTALLED UNIT DISCONNECT SWITCH.
- PROVIDE FACTORY-INSTALLED RETURN DUCT SMOKE DETECTOR WITH REMOTE TEST STATION TO BE LOCATED IN OCCUPIED SPACE. INSTALLATION OF REMOTE TEST STATION AND CONNECTION TO FIRE ALARM SYSTEM BY E.C.
- PROVIDE FACTORY-INSTALLED 120V GFCI CONVENIENCE OUTLET. GFCI POWERED FROM UNIT. RECEPTACLE SHALL BE COMPLIANT WITH NEC 210.63.
- PROVIDE ANTI-SHORT CYCLE TIMER AND LOW AMBIENT CONTROLS.
- PROVIDE FACTORY ROOF CURB SO THAT THE BOTTOM OF THE ROOFTOP UNIT IS A MINIMUM OF 14" ABOVE FINISHED ROOF. MOUNT LEVEL ON SLOPED ROOF.
- PROVIDE HINGED AND TOOL-LESS ACCESS DOORS.
- PROVIDE PHASE MONITOR.
- PROVIDE FULL ENTHALPY ECONOMIZER WITH POWERED EXHAUST.
- PROVIDE DIGITAL, WI-FI ACCESSIBLE 7-DAY PROGRAMMABLE THERMOSTAT WITH OCCUPIED/UNOCCUPIED SETTINGS CAPABLE OF CONTROLLING THE H/C STAGES OF SPECIFIED UNIT.
- PROVIDE UNIT WITH HGRH.
- MODULATE OUTSIDE AIR BASED ON DEMAND REPORTED BY CO2 SENSOR.

GENERAL MECHANICAL NOTES	
1. ALL WORK SHALL BE IN COMPLIANCE WITH STATE AND LOCAL CODES.	14. DUCT MATERIAL SHALL BE GALVANIZED OR ALUMINUM CONSTRUCTION IN ACCORDANCE WITH SMACNA DUCT CONSTRUCTION STANDARD 2005 FOR THE PRESSURE AND SEAL CLASS LISTED IN DUCTWORK/INSULATION SCHEDULE.
2. THE CONTRACTOR SHALL PAY FOR ALL FEES, PERMITS, LICENSES, ETC., NECESSARY FOR PROPER COMPLETION OF THE WORK.	15. DUCT SIZES LISTED ON PLANS ARE THE REQUIRED CLEAR INTERIOR DIMENSIONS.
3. INSTALL ALL EQUIPMENT IN ACCORDANCE WITH MANUFACTURERS RECOMMENDATIONS.	16. SUPPLY AND RETURN BRANCH DUCTS MAY BE INSULATED FLEX DUCT IF THE RUN IS LESS THAN 5 FEET IN LENGTH. ANY LENGTHS OVER 5 FEET SHALL BE RIGID DUCTWORK. DUCT SHALL BE THE SAME SIZE AS THE LISTED DIFFUSER THROAT UNLESS NOTED OTHERWISE.
4. VERIFY ALL EXISTING CONDITIONS. NOTIFY ENGINEER OF ANY CONFLICTS BETWEEN CONTRACT DRAWINGS AND ACTUAL CONDITIONS.	17. PROVIDE VOLUME CONTROL DAMPERS WHERE INDICATED AND AT ALL TAKEOFFS, BOTH SUPPLY AND RETURN SYSTEMS, AND MAJOR DUCT RUNS. DAMPERS SHALL BE FACTORY-FABRICATED WITH ZINC-PLATED, DIE-CAST CONTROL HARDWARE. CONTROL HARDWARE SHALL INCLUDE HEAVY GAUGE DIAL AND HANDLE WITH ELEVATED PLATFORM FOR INSULATED DUCT MOUNTING.
5. EXISTING UTILITIES TO BE ABANDONED SHALL BE PROPERLY DISCONNECTED AND CAPPED AS REQUIRED BY CODE OR LOCAL ORDINANCE.	18. PROVIDE TURNING VANES IN ALL RECTANGULAR ELBOWS CONFORMING TO SMACNA DUCT CONSTRUCTION STANDARD 2005 FIG. 4-2 TYPE RE-3 WITH STANDARD RADIUS. WHERE SPACE PERMITS, PROVIDE RADIUS ELBOWS IN ACCORDANCE WITH FIGURES 4-2, TYPE RE-1.
6. THESE DRAWINGS ARE DIAGRAMMATIC AND SHALL NOT BE SCALED. ADDITIONAL DATA SHALL BE FROM THE ENGINEER THROUGH WRITTEN CLARIFICATION ONLY. VERIFY ALL EXISTING CONDITIONS, ELEVATIONS, AND DIMENSIONS BEFORE PROCEEDING WITH ANY PORTION OF ANY WORK. THE CONTRACTOR SHALL PROVIDE ALL OFFSETS AND TRANSITIONS REQUIRED TO MEET EXISTING CONDITIONS.	19. ALL RECTANGULAR MAIN TO RECTANGULAR BRANCH CONNECTIONS, BOTH CONVERGING AND DIVERGING CONFIGURATIONS, SHALL HAVE A 45 DEG. ENTRY TAP CONSTRUCTED IN ACCORDANCE WITH SMACNA DUCT CONSTRUCTION STANDARD 2005 FIG. 4-6.
7. THE CONTRACTOR SHALL PERFORM WORK IN A SKILLED AND PROFESSIONAL MANNER.	20. DIFFUSER PATTERN 4-WAY UNLESS OTHERWISE INDICATED. PROVIDE FIBERGLASS DUCT INSULATION WITH VAPOR BARRIER AS SCHEDULED UNLESS NOTED OTHERWISE.
8. ALL CONTRACTORS ARE RESPONSIBLE TO FIELD COORDINATE WORK SCHEDULE WITH OWNER REPRESENTATIVE.	21. MECHANICAL CONTRACTOR TO REPAIR ANY DAMAGE DONE TO THE FIRE PROOFING WHILE INSTALLING THE MECHANICAL TRADES. SEAL ALL PENETRATIONS THROUGH RATED STRUCTURES WITH UL LISTED FIRE SEAL DESIGNED FOR THE SPECIFIED APPLICATION.
9. THE CONTRACTOR SHALL WORK AND COORDINATE WITH THE OTHER TRADES.	22. THE CONTRACTOR SHALL TAKE ALL PRECAUTIONARY MEASURES TO PROTECT THE PUBLIC AND ADJACENT PROPERTIES FROM DAMAGE THROUGHOUT CONSTRUCTION.
10. ALL EQUIPMENT SHALL BE NEW AND IN UNDAMAGED CONDITION. ANY EQUIPMENT FOUND DEFECTIVE SHALL BE IMMEDIATELY REMOVED FROM THE PROJECT.	23. THE CONTRACTOR SHALL GUARANTEE ALL WORKMANSHIP AND MATERIALS FOR A PERIOD OF ONE (1) YEAR FROM THE DATE OF SUBSTANTIAL COMPLETION OR AS OTHERWISE REQUIRED IN THE SPECIFICATIONS.
11. PROVIDE 3 COPIES OF AN OPERATION AND MAINTENANCE MANUAL FOR ALL MAJOR EQUIPMENT REQUIRING SERVICE. MAJOR EQUIPMENT INCLUDES BUT IS NOT LIMITED TO COILS, FANS, AND CONTROL WIRING DIAGRAMS. EACH PIECE OF EQUIPMENT SHALL STATE THE CONTRACT DATE AND THE NAME, ADDRESS AND PHONE NUMBER FOR THE PRIME CONTRACTOR, SUBCONTRACTOR PERFORMING THE INSTALLATION, AND THE LOCAL VENDOR FOR SPARE PARTS. THE MANUALS SHALL CONTAIN MAINTENANCE INSTRUCTIONS REQUIRED FOR THE INSTALLED EQUIPMENT. MANUALS SHALL BE BOUND IN A THREE RING HARD COVER BINDER. O & M MANUALS SHALL BE SUBMITTED TO THE OWNER PRIOR TO FINAL WALK THROUGH OF THE PROJECT.	24. MECHANICAL CONTRACTOR TO INCLUDE THE TEST AND BALANCE, AND ANY PERMIT FEES IN THEIR BID.
12. PROVIDE 8 HOURS OF OWNER TRAINING FOR THE INSTALLED EQUIPMENT. TRAINING SHALL BE HELD ONLY AFTER ALL OF THE EQUIPMENT IS INSTALLED AND PROPER OPERATION IS VERIFIED.	25. MECHANICAL CONTRACTOR SHALL VERIFY ALL ROOFTOP EQUIPMENT WEIGHTS, SIZES, LOCATIONS AND OPENINGS REQUIRED AND SHALL COORDINATE ANY CHANGES WITH THE ARCHITECT.
13. CONTRACTOR SHALL SUBMIT A CERTIFIED REPORT INDICATING SYSTEM PERFORMANCE INCLUDING, BUT NOT LIMITED TO, VOLTAGE AND AMPERAGE MEASUREMENTS OF ALL EQUIPMENT GREATER THAN 1/3 H.P. AIR BALANCE MEASUREMENTS OF OUTSIDE AIR DELIVERY, AIR HANDLING UNIT SUPPLY, SUPPLY DIFFUSERS, EXHAUST AND RETURN GRILLES. AIR BALANCE SHALL BE WITHIN 10% OF DESIGN CONDITIONS. THE REPORT CERTIFICATION SHALL BE AS FOLLOWS: I (name) of (company) CERTIFY THAT ALL MEASUREMENTS, FIGURES AND STATEMENTS INDICATED IN THIS REPORT WERE TAKEN BY ME OR UNDER MY SUPERVISION AND ARE ACCURATE AS OF (date). DESIGN FLOWS WERE BASED UPON PLANS DATED (xx/xx/xx).	26. UPON PROJECT COMPLETION, RECORD (AS-BUILT) DRAWINGS SHALL BE PROVIDED BY THE CONTRACTOR TO THE BUILDING OWNER. ALL CHANGES MADE TO EQUIPMENT, DUCTWORK, AND GENERAL DESIGN SHALL BE NOTED ON THE DRAWINGS. PROVIDE IN PDF FORMAT OR PRINTED SET AT THE OWNER'S REQUEST.

ABBREVIATIONS		
A	AMP	IN INCH
ADD	ADDENDUM	
ADJ	ADJUSTABLE	
AFF	ABOVE FINISH FLOOR	LAT LEAVING AIR TEMPERATURE
AHU	AIR HANDLER UNIT	LB POUND
AI	ANALOG INPUT	LWT LEAVING WATER TEMPERATURE
ALT	ALTERNATE	
AO	ANALOG OUTPUT	MAX MAXIMUM
APPRX	APPROXIMATE	MBH 1000 BTU PER HOUR
ARCH	ARCHITECT, ARCHITECTURAL	MC MECHANICAL CONTRACTOR
		MCA MINIMUM CIRCUIT AMPS
BDD	BACK DRAFT DAMPER	MECH MECHANICAL
BLDG	BUILDING	MIN MINIMUM
BTUH	BRITISH THERMAL UNIT PER HOUR	MFR MANUFACTURER
		NTS NOT TO SCALE
C	CENTER	
CD	CEILING DIFFUSER	OA OUTSIDE AIR
CFM	CUBIC FEET PER MINUTE	OC ON CENTER
CO	CLEAN OUT	
COND	CONDENSATE	P PLUMB
CONT	CONTINUOUS	PC PLUMBING CONTRACTOR
COP	COEFFICIENT OF PERFORMANCE	PLBG PLUMBING
		PSI POUNDS PER SQUARE INCH
DB	DRY BULB	
DET	DETAIL	QTY QUANTITY
DG	DOOR GRILLE	
DI	DIGITAL INPUT	RA RETURN AIR
DIA OR Ø	DIAMETER	REQD REQUIRED
DIM	DIMENSION	REV REVERSE OR REVISION
DN	DOWN	RG RETURN AIR GRILLE
DO	DIGITAL OUTPUT	RPM REVOLUTIONS PER MINUTE
DWG	DRAWING	RTU ROOF TOP UNIT
		SA SUPPLY AIR
EA	EXHAUST AIR	SQFT SQUARE FEET
EAT	ENTERING AIR TEMPERATURE	SG SUPPLY GRILLE
EC	ELECTRICAL CONTRACTOR	SP STATIC PRESSURE
EER	ENERGY EFFICIENCY RATIO	SS SPECIFICATIONS
EF	EXHAUST FAN	
EG	EXHAUST GRILLE	T&B TEST AND BALANCE
ELEC	ELECTRICAL	TEMP TEMPERATURE OR TEMPORARY
ERV	ENERGY RECOVERY VENTILATOR	TG TRANSFER GRILLE
ESP	EXTERNAL STATIC PRESSURE	TYP TYPICAL
EWT	ENTERING WATER TEMPERATURE	
EXIST	EXISTING	V VOLT
		VAR VARIABLE OR VARIES
FA	FRESH AIR	VEL VELOCITY
FPM	FEET PER MINUTE	VFD VARIABLE FREQUENCY DRIVE
FT	FOOT (FEET)	VTR VENT THRU ROOF
		W/ WITH
GA	GAUGE/GAGE	W/IN WITHIN
GALV	GALVANIZED	W/O WITH OUT
GC	GENERAL CONTRACTOR	WB WET BULB
GPM	GALLONS PER MINUTE	WC WATER COLUMN (INCHES OF)
GYP	GYPSUM	WT WEIGHT
HORIZ	HORIZONTAL	
HP	HORSEPOWER	
HT	HEIGHT	
I/O	INPUT/OUTPUT	

MECHANICAL HVAC LEGEND		
EXHAUST AIR DUCT (DOWN)		EXHAUST AIR DUCT (UP)
RETURN AIR DUCT (DOWN)		RETURN AIR DUCT (UP)
OUTSIDE OR SUPPLY AIR DUCT (DOWN)		OUTSIDE OR SUPPLY AIR DUCT (UP)
DUCT SIZE		NEW DUCTWORK
FLEX DUCT		EXISTING DUCTWORK
DEMOLITION LINETYPE		SUPPLY AIR CEILING DIFFUSER
RETURN AIR GRILLE		EXHAUST AIR GRILLE
DIFFUSER, GRILLE, AND REGISTER CALL-OUTS		SCHEDULED EQUIPMENT TAG
MANUAL BALANCING DAMPER		PIPE PENETRATION THROUGH FIRE RATED WALL
FIRE DAMPER		SMOKE DAMPER
MOTORIZED DAMPER		FIRE/SMOKE DAMPER
THERMOSTAT		HUMIDISTAT
REMOTE SENSOR		CARBON DIOXIDE SENSOR
DUCT SMOKE DETECTOR		

MECHANICAL SHEET INDEX	
M000	MECHANICAL LEGEND, SCHEDULES, AND NOTES
M101	MECHANICAL FLOORPLAN
M201	MECHANICAL ROOF PLAN
M501	MECHANICAL DETAILS

Salas O'Brien
2900 S. Telephone Road, Suite 120
Moore, OK 73160
Salas O'Brien Registration: CA# 7058
Expiration Date: 6/30/2025
Salas O'Brien Project Number: 2450-70011-00

AGP
the Abla Griffin Partnership L.L.C.
201 N. BROADWAY
SUITE 210
MOORE, OK. 73160
405.735.3477
AGP@theAGP.net
www.theAGP.net

CEDAR CREEK
CIVIL
KFC ENGINEERING
STRUCTURAL
SALAS O'BRIEN
MECHANICAL / ELECTRICAL



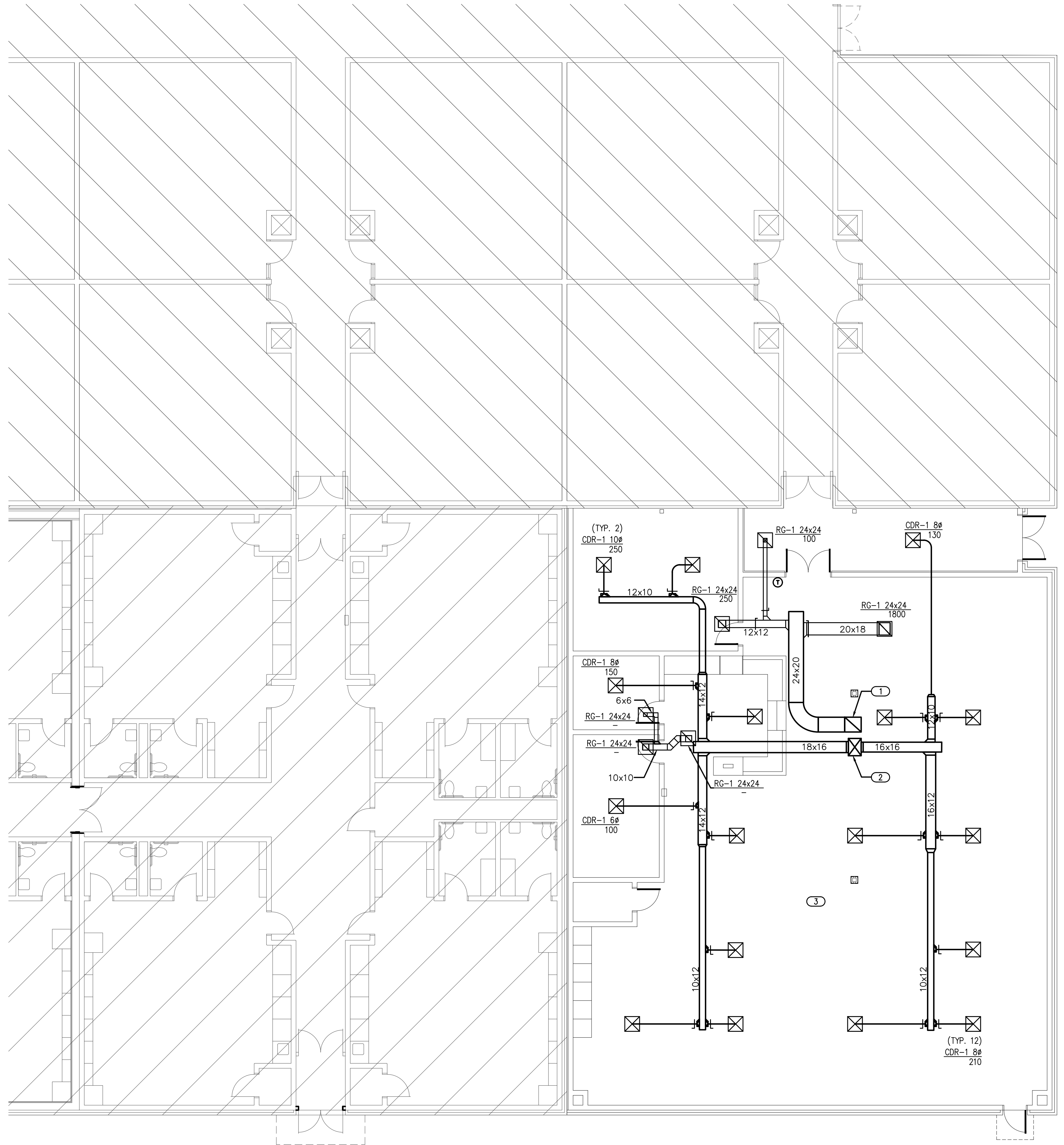
KF
drawn by
DG
checked by
JULY 2024
date
revisions

MOORE
PUBLIC SCHOOLS

EARLYWINE
ELEMENTARY SCHOOL
MEDIA CENTER

sheet no:
M000

OWNERSHIP USE OF DOCUMENTS:
AGP EXPRESSLY RESERVES ITS COPYRIGHT AND OTHER PROPERTY RIGHTS OF ALL PLANS AND DRAWINGS DESIGNED AND/OR PRODUCED. PLANS AND DRAWINGS ARE NOT TO BE REPRODUCED IN ANY FORM OR MANNER WITHOUT THE EXPRESSED WRITTEN CONSENT OF AGP.



- GENERAL NOTES**
- COORDINATE INSTALLATION OF EQUIPMENT AND DUCTWORK WITH ALL TRADES.
 - COORDINATE LOCATION OF THERMOSTATS WITH E.C. ROUGH-IN BY E.C.
 - COORDINATE CARBON DIOXIDE SENSOR LOCATION WITH EARTHSMART PRIOR TO INSTALLATION.
 - M.C. SHALL PROVIDE CARBON MONOXIDE SENSORS WHERE NEEDED PER CODE FOR EXISTING EQUIPMENT THROUGHOUT THE ENTIRE BUILDING. M.C. IS RESPONSIBLE FOR SURVEYING ENTIRE BUILDING AND LOCATING FUEL BURNING HVAC EQUIPMENT FOR SENSOR LOCATIONS. COORDINATE WITH E.C FOR POWER CONNECTION.

- KEYED NOTES**
- DUCT UP 24x26 TO CONNECT TO RTU RETURN OPENING.
 - DUCT UP 20x26 TO CONNECT TO RTU SUPPLY OPENING.
 - CARBON MONOXIDE DETECTOR TO BE INSTALLED ACCORDING TO ALL APPLICABLE CODES. DETECTOR SHALL BE INSTALLED CENTRALLY ON CEILING. ALSO INCLUDE BATTERY BACKUP IN EVENT PRIMARY POWER IS INTERRUPTED. ALARM SIGNAL SHALL BE ROUTED TO ADMINISTRATION COORDINATE WITH E.C. WITH PRIMARY POWER CONNECTION AND SYSTEM CONNECTION.

AGP
 the Abila Griffin
 Partnership L.L.C.
 201 N. BROADWAY
 SUITE 210
 MOORE, OK. 73160
 405.735.3477
 AGP@theAGP.net
 www.theAGP.net

CEDAR CREEK
 CIVIL
 KFC ENGINEERING
 STRUCTURAL
 SALAS O'BRIEN
 MECHANICAL / ELECTRICAL



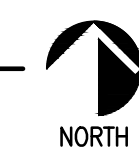
KF
 drawn by
 DG
 checked by
 JULY 2024
 date
 revisions



EARLYWINE
 ELEMENTARY SCHOOL
 MEDIA CENTER

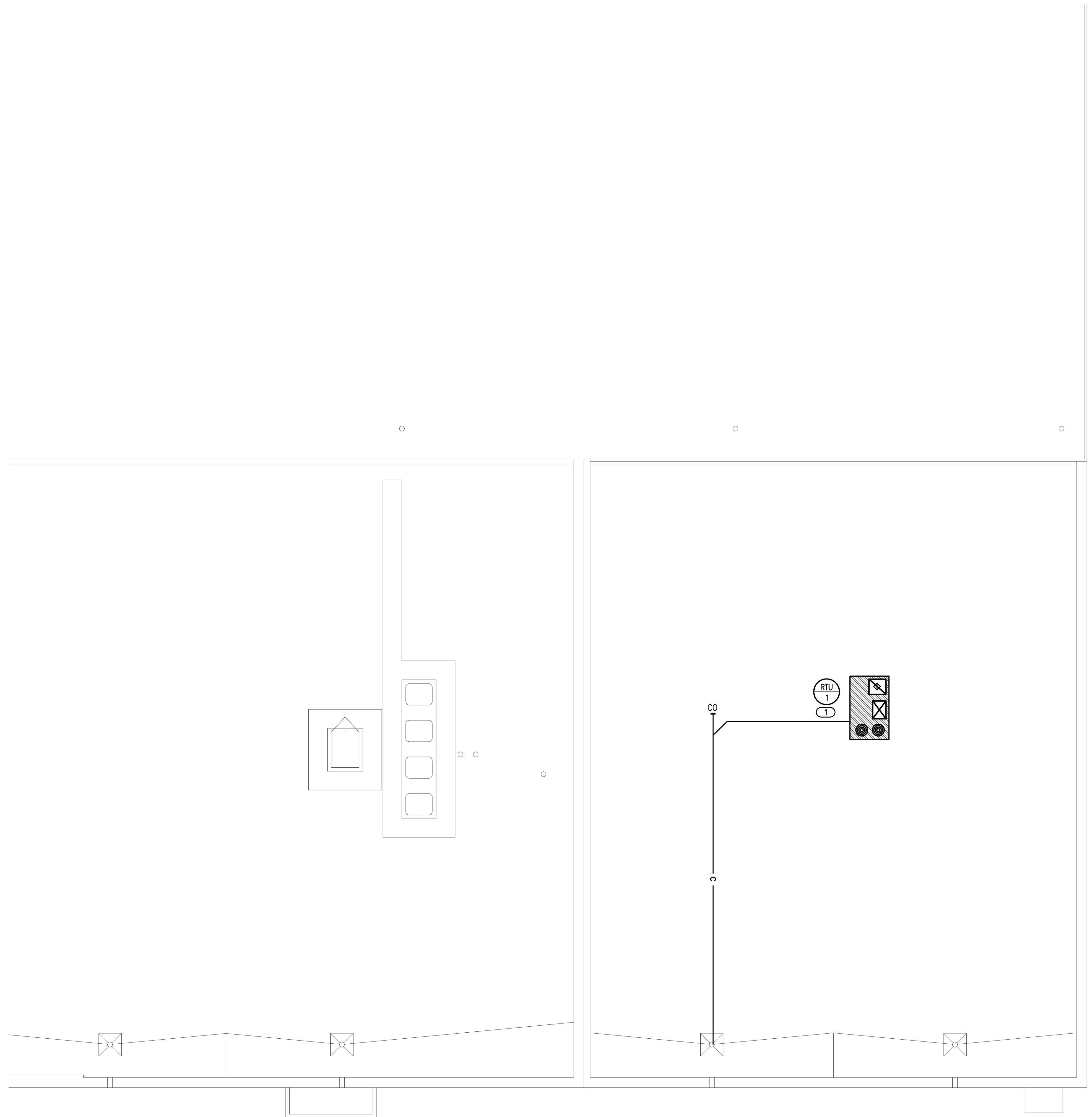
sheet no:
M101

1 MECHANICAL FLOORPLAN
 SCALE: 1/8" = 1'-0"



Salas O'Brien
 2900 S. Telephone Road, Suite 120
 Moore, OK 73160
 Salas O'Brien Registration: CA# 7058
 Expiration Date: 6/30/2025
 Salas O'Brien Project Number: 2450-70011-00

OWNERSHIP USE OF DOCUMENTS:
 AGP EXPRESSLY RESERVES ITS COPYRIGHT AND OTHER PROPERTY RIGHTS OF ALL PLANS AND DRAWINGS DESIGNED AND/OR PRODUCED. PLANS AND DRAWINGS ARE NOT TO BE REPRODUCED IN ANY FORM OR MANNER WITHOUT THE EXPRESSED WRITTEN CONSENT OF AGP.



GENERAL NOTES

1. ALL ROOF TOP EQUIPMENT TO BE LOCATED A MINIMUM 10'-0" AWAY FROM ROOF EDGE.
2. MAINTAIN A MINIMUM OF 10'-0" HORIZONTAL CLEARANCE BETWEEN ALL EXHAUST OUTLETS AND ANY FRESH AIR INTAKES.
3. ALL ROOF SUPPORT SYSTEMS ARE TO BE MANUFACTURED FOR THE ROOF MATERIAL/SYSTEM TO BE INSTALLED. REFER TO ARCHITECTURAL PLANS FOR THE ROOF SYSTEM, CURB INSTALLATION TO BE WARRANTED BY ROOFING CONTRACTOR.
4. M.C. SHALL PROVIDE COPPER PIPING FOR CONDENSATE LINE PAINTED BLACK. ROUTE CONDENSATE TO ROOF DRAIN.

KEYED NOTES

① ROUTE CONDENSATE DRAIN PIPING ON ROOF AND TURN DOWN TO PRIMARY ROOF DRAIN CONNECTED TO UNDERGROUND STORM SYSTEM. PROVIDE PIPE SUPPORTS PER SPECIFICATIONS. MAINTAIN MINIMUM 1/8" PER FOOT SLOPE IN DIRECTION OF DISCHARGE.

AGP
the Abla Griffin
Partnership L.L.C.

201 N. BROADWAY
SUITE 210
MOORE, OK. 73160
405.735.3477
AGP@theAGP.net
www.theAGP.net

CEDAR CREEK
CIVIL

KFC ENGINEERING
STRUCTURAL

SALAS O'BRIEN
MECHANICAL / ELECTRICAL



KF
drawn by

DG
checked by

JULY 2024
date

revisions



EARLYWINE
ELEMENTARY SCHOOL
MEDIA CENTER

sheet no:

M201

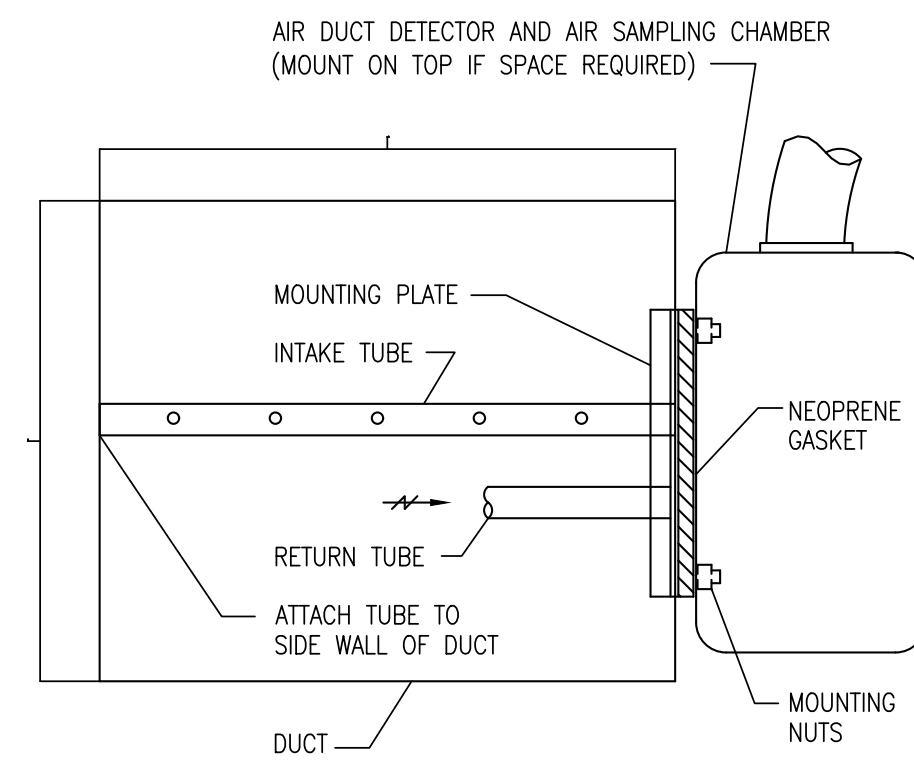
1 MECHANICAL ROOF PLAN
SCALE: 1/8" = 1'-0"



Salas O'Brien

2900 S. Telephone Road, Suite 120
Moore, OK 73160
Salas O'Brien Registration: CA# 7058
Expiration Date: 6/30/2025
Salas O'Brien Project Number: 2450-70011-00

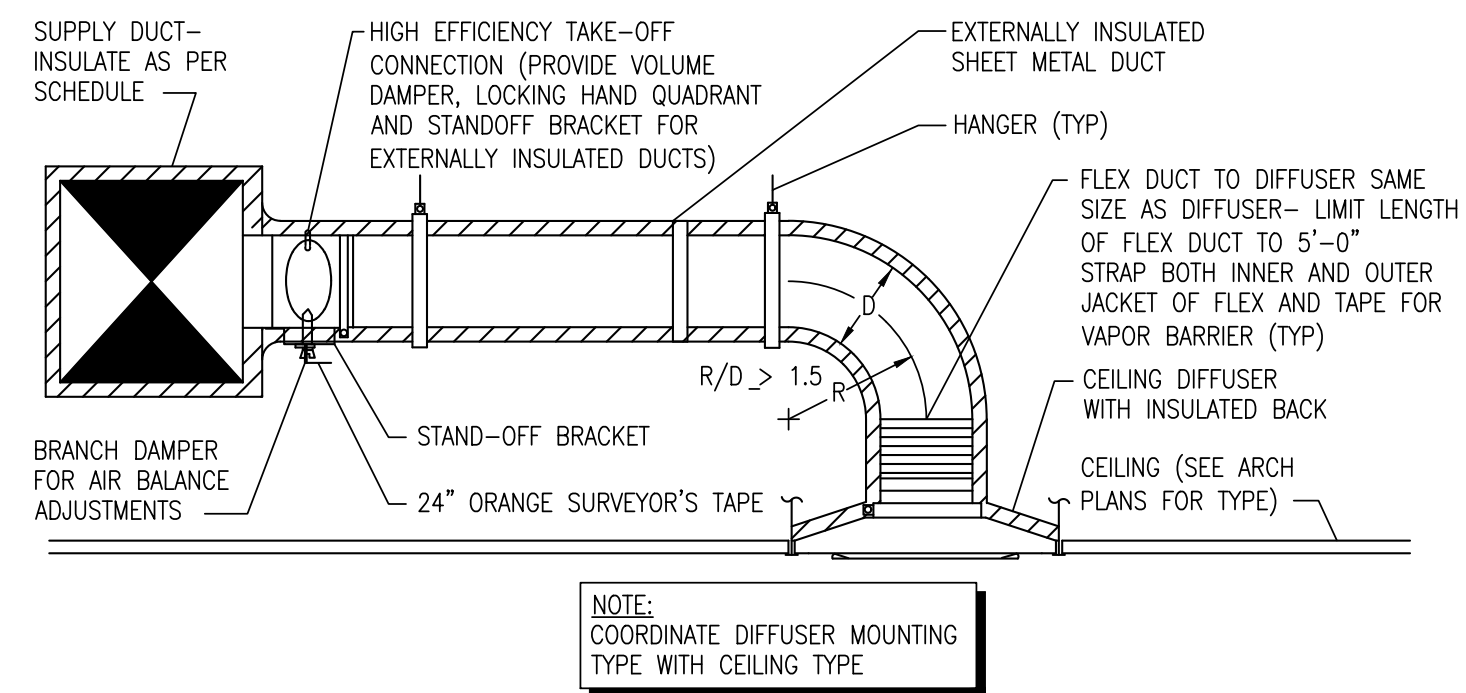
OWNERSHIP USE OF DOCUMENTS:
AGP EXPRESSLY RESERVES ITS COPYRIGHT AND OTHER PROPERTY RIGHTS OF ALL PLANS AND DRAWINGS DESIGNED AND/OR PRODUCED. PLANS AND DRAWINGS ARE NOT TO BE REPRODUCED IN ANY FORM OR MANNER WITHOUT THE EXPRESSED WRITTEN CONSENT OF AGP.



- NOTES:
1. SMOKE DETECTOR FURNISHED AND WIRED BY ELECTRICAL CONTRACTOR, AND MOUNTED BY MECHANICAL CONTRACTOR.
 2. INSTALL IN STRICT ACCORDANCE WITH MANUFACTURER'S INSTALLATION INSTRUCTIONS.
 3. PROVIDE ACCESS DOOR AT SAMPLING TUBES.
 4. THE TUBE SHALL BE INSTALLED PARALLEL TO LONG DIMENSION OF DUCT.
 5. PRODUCT SHALL BE UL555 OR UL555S LISTED.
 6. EC SHALL TEST ACCORDING TO UL AND CODES IN THE PRESENCE OF CODE AUTHORITY.

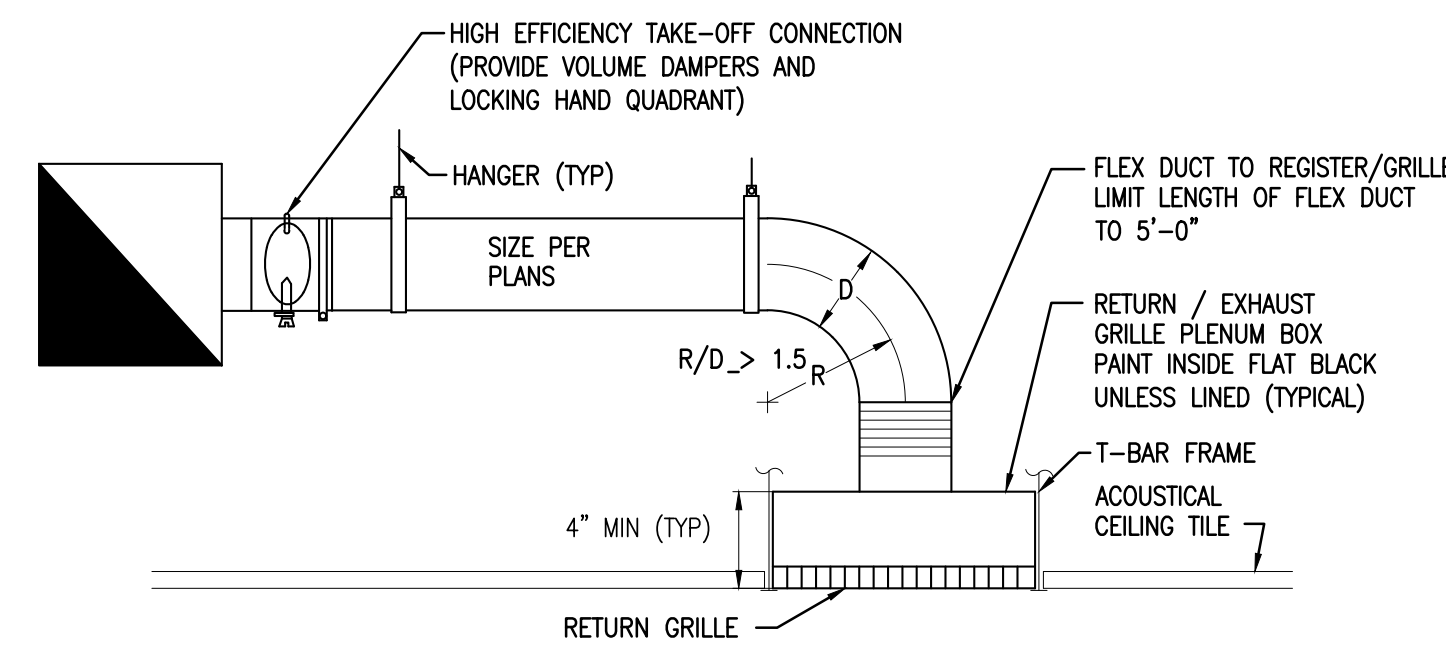
4 SMOKE DETECTOR MOUNTING DETAIL

NOT TO SCALE



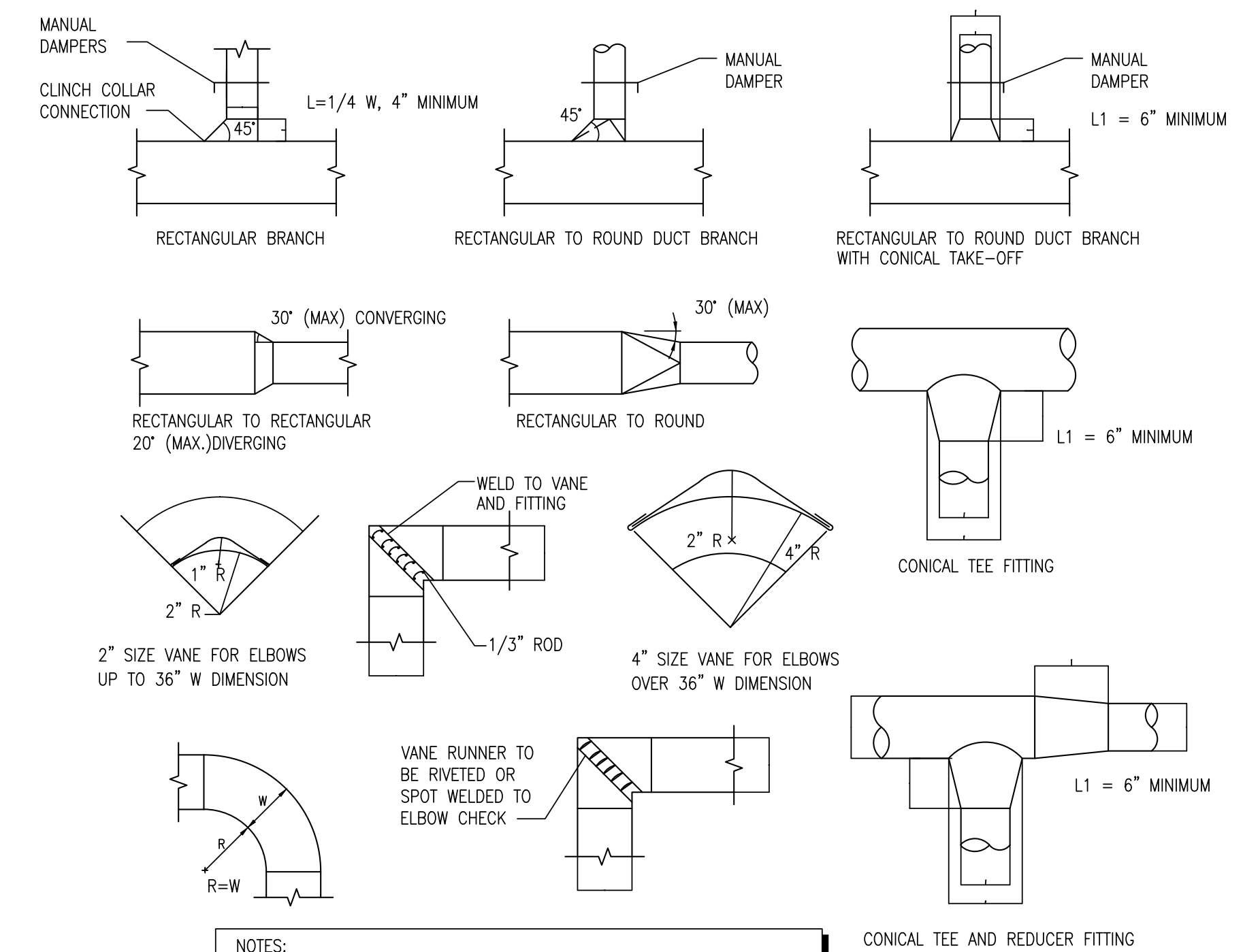
3 CEILING DIFFUSER DETAIL

NOT TO SCALE



2 RETURN / EXHAUST AIR GRILLE PLENUM BOX

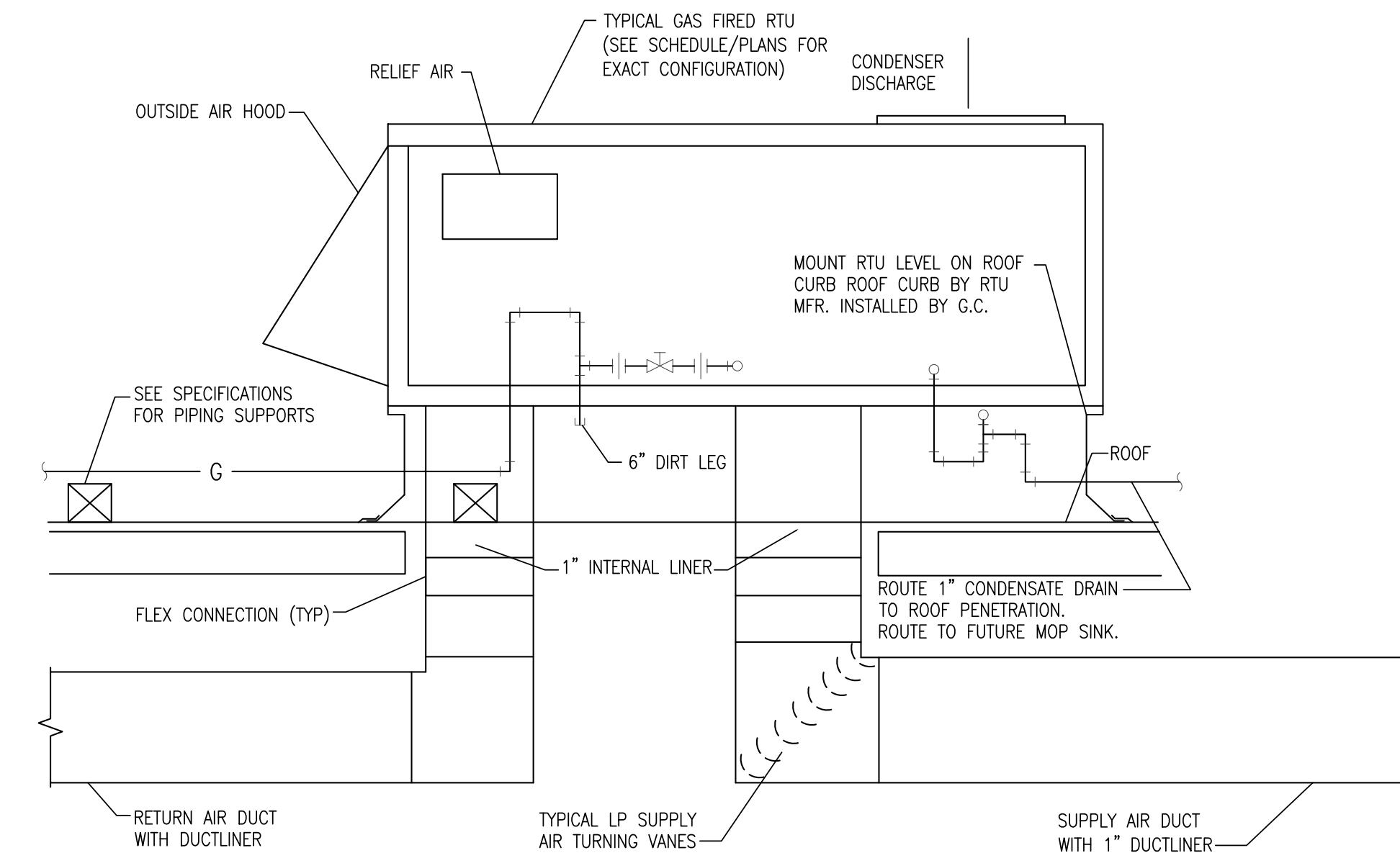
NOT TO SCALE



- NOTES:
1. ALL DUCTWORK TO BE CONSTRUCTED TO MEET S.M.A.C.N.A. STANDARDS
 2. REMOVE EVERY OTHER TURNING VANE IN RETURN/EXHAUST DUCTS.

1 TYPICAL DUCTWORK DETAILS

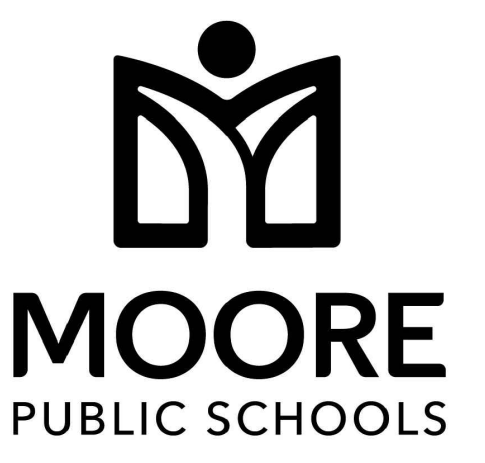
NO SCALE



5 TYPICAL ROOF TOP UNIT DETAIL

NOT TO SCALE

KF	drawn by
DG	checked by
JULY 2024	date
	revisions



EARLYWINE
ELEMENTARY SCHOOL
MEDIA CENTER

sheet no:

M501

Salas O'Brien
2900 S. Telephone Road, Suite 120
Moore, OK 73160
Salas O'Brien Registration: CA# 7058
Expiration Date: 6/30/2025
Salas O'Brien Project Number: 2450-70011-00

OWNERSHIP USE OF DOCUMENTS:
AGP EXPRESSLY RESERVES ITS COPYRIGHT AND OTHER PROPERTY RIGHTS OF ALL PLANS AND DRAWINGS DESIGNED AND/OR PRODUCED. PLANS AND DRAWINGS ARE NOT TO BE REPRODUCED IN ANY FORM OR MANNER WITHOUT THE EXPRESSED WRITTEN CONSENT OF AGP.