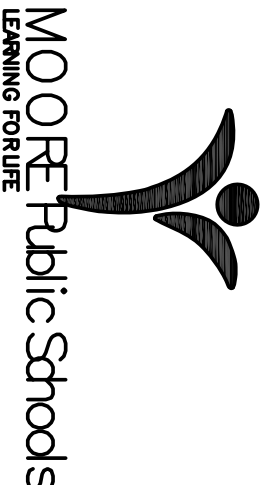




CG	drawn by
MA	checked by
MARCH 2015	date
	revisions

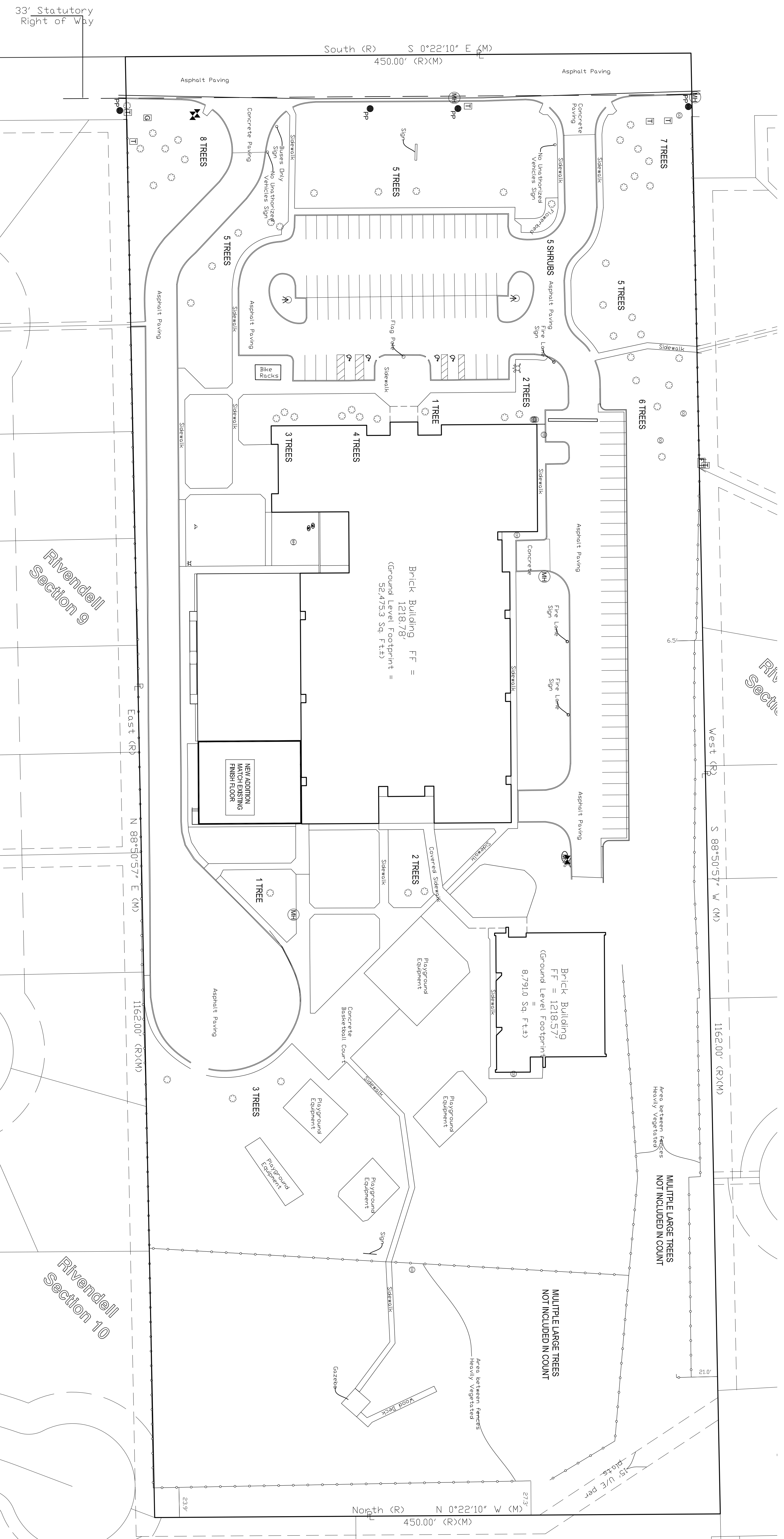
MOORE PUBLIC SCHOOLS
BOARD OF EDUCATION
MOORE, OKLAHOMA



EARL WYNE
ELEMENTARY SCHOOL
CLASSROOM
ADDITION

Sheet No.:
L100

OWNERSHIP USE OF DOCUMENTS:
AGP EXPRESSLY RESERVES ITS
COPYRIGHT AND OTHER PROPERTY
RIGHTS OF ALL PLANS AND DRAWINGS
DESIGNED AND/OR PRODUCED. PLANS
AND DRAWINGS ARE NOT TO BE
REPRODUCED IN ANY FORM OR MANNER
WITHOUT THE EXPRESS WRITTEN
CONSENT OF AGP.



EXISTING LANDSCAPING SITE PLAN
1
1"=40'-0"

LANDSCAPING NOTES:
435,800 S.F. DEVELOPED AREA
EXISTING SITE SIZE: 435,800 / 200 = 2178 POINTS
EXISTING PARKING LOT: 70 EXISTING SPACES = 140 POINTS
POINTS REQ'D: 2178 + 70 = 2248
MULTIPLE TREE AREAS @ NE CORNER
OF PROPERTY NOT INCLUDED IN CALCULATIONS.
EXISTING LANDSCAPING:
32 - 8" TREES = 832 PTS
20 - 8" TREES (EVERGREENS) = 520 PTS
5 - LARGE SHRUBS = 15 PTS
14520 SQ. TURF GRASS = 3,630 PTS
MAX 25% ALLOWED = 907.50 PTS
TOTAL EXISTING PTS 2,274.50 PTS

**EXISTING SPRINKLER SYSTEM
MODIFICATION NOTE:**
THE CONTRACTOR SHALL FIELD VERIFY, INVENTORY & REMOVE
ANY SPRINKLER SYSTEM HEADS, PIPING & ASSOCIATED ITEMS
WHICH INTERFERE W/ THE NEW BUILDING ADDITION. THE CONTRACTOR
SHALL MODIFY REMAINING SYSTEM AS NECESSARY AFTER
CONSTRUCTION OF NEW ADDITION / NEW BUILDING TO PROPER
WORKING ORDER COORDINATE W/ ARCHITECT.