



OC
drawn by
MA
checked by
JULY 2024
date
revisions



MOORE
PUBLIC SCHOOLS

EARL WINE
ELEMENTARY SCHOOL
MEDIA CENTER

Sheet No.:

A100

OWNERSHIP USE OF DOCUMENTS:
AGP EXPRESSLY RESERVES ITS
COPYRIGHT AND OTHER PROPERTY
RIGHTS OF ALL PLANS AND DRAWINGS
DESIGNED AND/OR PRODUCED. PLANS
AND DRAWINGS ARE NOT TO BE
REPRODUCED IN ANY FORM OR MANNER
WITHOUT THE EXPRESS WRITTEN
CONSENT OF AGP.

CONSTRUCTION DATA (TABLE 603):

OCCUPANCY -	E
CONSTRUCTION TYPE -	TYPE II - B
BASIC ALLOWABLE AREA -	14,500 S.F. PER FLOOR (INCR. TO 88,875 S.F. SECTION 503)
ALLOWABLE STORIES -	2
ACTUAL STORIES -	1
ACTUAL HEIGHT -	17'-4"

BUILDING SIZES:
BUILDING ADDITION PLUS 1 STORY @ 38,378
EXISTING BUILDING 2:
BUILDING 1 + 2 + 3 + ADDITION TOTAL: 1 STORY @ 63,294 S.F.

STRUCTURAL FIRE PROTECTION (TABLE 601):
EXTERIOR BEARING WALLS 0 HOUR
INTERIOR BEARING WALLS NONCOMBUSTIBLE
EXTERIOR NONBEARING WALLS NONCOMBUSTIBLE
COLUMNS 0 HOUR
BEAMS 0 HOUR
PERMANENT PARTITIONS 0 HOUR
FLOOR ASSEMBLIES NONCOMBUSTIBLE
ROOF ASSEMBLIES 0 HOUR
EXTERIOR OPENINGS 0 HOUR
N/A

PASSIVE FIRE SAFETY SYSTEM:
PORTABLE FIRE EXTINGUISHERS (REF. SHEETS A104)
TRAVEL DISTANCE = 280'-0" MAX.
ACTUAL MAX. TRAVEL DISTANCE = 193'-0"
DEADEND - 50'-0" MAX.
ACTUAL DEADEND - NONE

ACTIVE FIRE SAFETY SYSTEMS EXISTING & NEW ADDITION:
FIRE SPRINKLER SYSTEM THROUGHOUT
FIRE ALARM SYSTEM
SMOKE DETECTION
AUTOMATIC AIR HANDLING EQUIP SHUTDOWN
EXIT LIGHT/EMERGENCY LIGHTS BATTERY

CODES/REGULATIONS USED (CITY OF OKLAHOMA CITY):
2018 IBC - INTERNATIONAL BUILDING CODE
AMERICAN WITH DISABILITIES ACT ACCESSIBILITY GUIDELINES
2017 NATIONAL ELECTRICAL CODE
2018 INTERNATIONAL PLUMBING CODE
2018 INTERNATIONAL MECHANICAL CODE
2018 INTERNATIONAL FIRE CODE
2009 ENERGY CONSERVATION CODE
ASSOCIATED SUPPLEMENTS TO EACH CODE

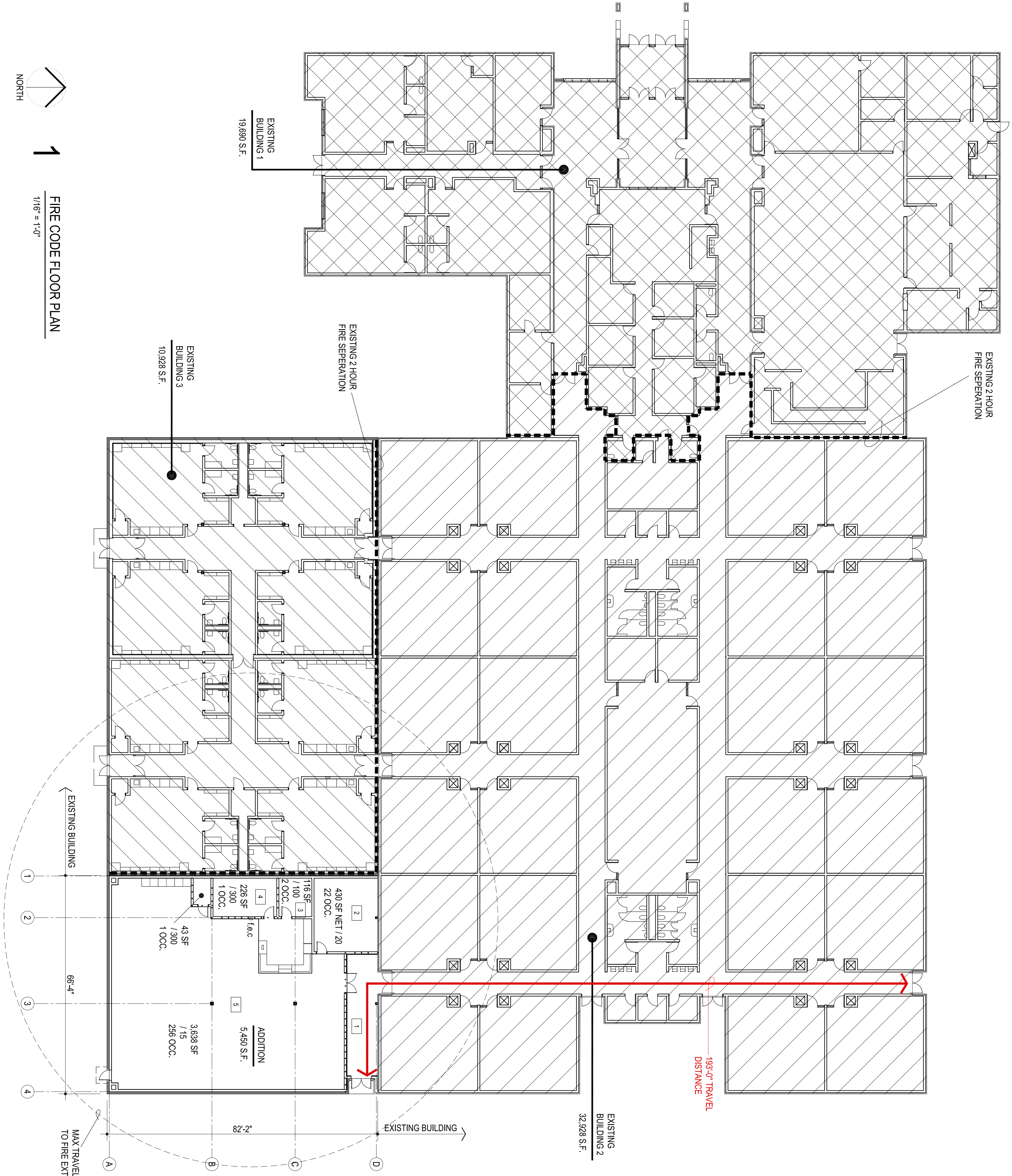
OCCUPANT LOAD (TABLE 1004.1.1) - NO ADDITIONAL
STUDENTS ADDED TO TOTAL POPULATION:
BUILDING ADDITION: 282
OCCUPANTS

EGRESS WIDTH:
BUILDING ADDITION: REQUIRED 57"
BUILDING ADDITION: PROVIDED 108"

PLUMBING FIXTURES (TABLE 2902.1) - NO ADDITIONAL
STUDENTS ADDED TO TOTAL POPULATION:

TOTAL OCCUPANT LOAD (EDUCATION) = 750	TOTAL PROVIDED
TOTAL REQUIRED:	WATER CLOSETS = 36 EXISTING
WATER CLOSETS = 15	URINALS = 4 EXISTING
LAVATORIES = 15	LAVATORIES = 39 EXISTING
DRINKING FOUNTAINS = 2	DRINKING FOUNTAINS = 14 EXISTING
SERVICE SINKS = 1	SERVICE SINKS = 3 EXISTING

..... DENOTES 1HR. RATED PARTITIONS CLOSE-OUT TO
BOTTOM OF DECKING - CLOSE-OUT PARTITIONS TO
BE CMU WHERE INDICATED ON STRUCTURAL FOR
LOAD BEARING CONDITIONS. ALL OTHER INDICATED
LOCATIONS TO BE CONSTRUCTED OF 1-LAYER
OF 5/8" FIRE RATED GYP. BOARD EACH SIDE
ON 3/8" METAL STUDS @ 16" O.C. STAGGER ALL
JOINTS & PROVIDE FIRE TAPE SEAL. ALL PENETRATIONS
W/ CONTINUOUS FIRE STOPPING INSULATION
& OR SEALANT.



1
FIRE CODE FLOOR PLAN
1/16" = 1'-0"

NOTE:
THIS PLAN INDICATES WALL TO CLOSE OUT TO STRUCTURE
DUE TO FIRE CODE REQUIREMENTS.
IT IS NOT A REPRESENTATION OF ALL WALLS RECD TO CLOSE
OUT FOR STRUCTURAL / NO CEILING PRESENT ETC. LOCATIONS