

**Construction Bulletin # 10**

Client: Abla Griffin Partnership  
 Project Name: Central JH STEM and Saferoom  
 Project Number: 2550-00564-00

April 14, 2026

Requested by:  Owner  
 Contractor:  
 Salas O'Brien:



To: Mike Abla, Clay Griffin

This Construction Bulletin is issued to:

- Offer additional information for clarification or supplemental drawings for layout assistance.
- Request cost and time impact to initiate a change to the Contract Documents. Owner approval is required, do not commence with revisions unless directed in writing. Avoid Work in areas that may be affected by proposed change until approved or rejected. Once approved, forward Change Order documentation as required by the Contract Documents.
- Direct a required change in the Contract Documents. Proceed with change(s) as indicated. Forward Change Order documentation as required by the Contract Documents.
- Response to RFI \_\_\_\_\_.

Item No.	Description	Attachment
1	Refer to clouds and deltas for changes on plans.	T201
2	Refer to clouds and deltas for changes on plans.	E201
3	Refer to clouds and deltas for changes on plans.	E601

**END OF CB-10**

**SAFEROOM NOTE**

PER ICC 500-2014, 309.1:  
 PENETRATIONS THROUGH THE STORM SHELTER ENVELOPE THAT ARE LARGER THAN:  
 1. 3.5 SQUARE INCHES IN AREA FOR RECTANGULAR OPENINGS, OR  
 2. 2 1/16" IN DIAMETER

SHALL BE CONSIDERED AN OPENING AND SHALL BE PROVIDED WITH AN OPENING PROTECTIVE DEVICE (SHROUD). REFERENCE STRUCTURAL DRAWINGS FOR A SAMPLE SHROUD DETAIL. THIS INCLUDES PENETRATIONS FOR BUNDLES OF CONDUIT.

**ACTIVE DAS HYBRID SYSTEM NOTE**

CONTRACTOR TO PROVIDE AND INSTALL A COMPLETE AND FUNCTIONING DAS SYSTEM IN THE STORM SHELTER PORTION OF THE BUILDING.  
 CONTRACTOR SHALL PROVIDE AND INSTALL A CEL-FI QUATRA 4000c SYSTEM BY NEXTIMITY.  
 REQUIREMENT THAT SYSTEM SHALL BOOST CELL SERVICE FOR VERIZON, T-MOBILE AND AT&T AND SUPPORT A MINIMUM OF 50 USERS.

**KEYED NOTES**

① DATA OUTLET RESERVED FOR 3D PRINTER NETWORK CONNECTION. COORDINATE FINAL LOCATION WITH OWNER.  
 ② NOT USED.  
 ③ CONTRACTOR TO TIE MAGNETIC DOOR HOLD OPENS INTO FIRE ALARM SYSTEM.

**TECHNOLOGY ENLARGED PLAN KEYED NOTES**

- INDICATES THE LOCATION OF A 8' TALL, 3/4" FIRE RATED PLYWOOD CONTRACTOR TO PROVIDE AND INSTALL PLYWOOD AND ALL REQUIRED MOUNTING HARDWARE. PLYWOOD SHALL BE PAINTED WHITE WITH FIRE RATED PAINT. TYPICAL FOR ALL SHOWN ON DRAWING.
- INDICATES THE LOCATION OF A NEW WALL MOUNTED TELECOMMUNICATION GROUND BUS BAR (TGBB). CABLING CONTRACTOR TO PROVIDE BUS BAR AND ALL REQUIRED MATERIAL TO MOUNT AT THE LOCATION SHOWN. TGBB TO BE MOUNTED AT +93" A.F.F.
- PROVIDE AND INSTALL A 12" WIDE, UNIVERSAL LADDER TRAY AND ALL REQUIRED MOUNTING HARDWARE. LADDER TRAY SHALL BE BLACK IN COLOR. TYPICAL FOR ALL SHOWN ON ENTIRE PROJECT.
- PROVIDE AND INSTALL ONE (1) 2-POST, FLOOR MOUNTED, 7" RELAY RACK (BLACK IN COLOR). PROVIDE BONDING WASHERS, BOLTS, AND NUTS AT ALL MECHANICALLY CONNECTED LOCATIONS OF THE RACK TO ENSURE THAT ALL PIECES OF THE RACK ARE COMPLETELY BONDED. SCRAPING PAINT FROM RACKS TO MAKE A BOND WILL NOT BE ACCEPTED. ALL RACK MOUNTED COMPONENTS SHALL BE MOUNTED WITH BONDING SCREWS AND THE CONTRACTOR SHALL PROVIDE THE OWNER WITH (50) ADDITIONAL BONDING SCREWS FOR THE INSTALLATION OF OWNER EQUIPMENT. NO DAISY CHAINING GROUNDS FROM RACK TO CABLE TRAY OR TO OTHER RACKS WILL BE ACCEPTED. ALL GROUNDS SHALL BE HOME RUN TO THE TELECOMMUNICATIONS GROUND BUS BAR (TGBB). TYPICAL FOR ALL SHOWN ON THE ENTIRE PROJECT.
- PROVIDE AND INSTALL ONE (1) 7"x6", FRONT AND REAR MANAGED, VERTICAL CABLE MANAGER (BLACK IN COLOR). CABLE MANAGERS SHALL BE INSTALLED ON EACH END OF THE RACK SYSTEMS AND BETWEEN EACH RACK. CABLE MANAGERS SHALL HAVE A SINGLE, SOLID, FULL HEIGHT HINGED DOOR IN THE FRONT AND WIDE SPACED CABLE RINGS WITH SPIN-OPEN LATCHES IN THE REAR. TYPICAL FOR ALL SHOWN IN THE ENTIRE PROJECT.
- APPROXIMATE LOCATION OF DAS NEXTIMITY CEL-FI QUATRA 4000c NETWORK UNIT. CONTRACTOR TO PROVIDE AND INSTALL A DEDICATED 120V CONNECTION. CONTRACTOR TO ALSO PROVIDE ONE(1) NETWORK CONNECTION TO THE NETWORK UNIT FOR SYSTEM MONITORING AND MANAGEMENT. COORDINATE FINAL MOUNTING HEIGHT WITH OWNER AND MANUFACTURER INSTALLATION INSTRUCTIONS.

**GENERAL NOTES**

A. FIRE: REPLACE EXISTING SILENT KNIGHT 5820XL WITH NEW 6820XL (6820 EVS IF VOICE EVAC IS REQUIRED). REPLACE ALL SD PROTOCOL DEVICES WITH SK. SEE SPECS FOR PARTS LIST AND SYSTEM REQUIREMENTS. MAIN BUILDING, AUDITORIUM, CAFE BUILDING, 800 BUILDING AND ENROLLMENT BUILDINGS TO BE UPDATED TO SK PROTOCOL DEVICES.

B. SECURITY ALARM: CONNECT ALL NEW SECURITY DEVICES TO EXISTING DSC ZONE EXPANDER AND POWER SUPPLY.

C. INTERCOM: CONNECT ALL NEW INTERCOM DEVICES TO EXISTING TELECOR INTERCOM SYSTEM. PROVIDE ALL LINE CARDS, ETC., NEEDED.

D. CLOCKS: CLOCKS SHALL BE PRIMEX DIGITAL CLOCKS. CONNECT NEW CLOCKS TO EXISTING PRIMEX CLOCK DRIVER. SUPPLY ALL REPEATERS, ETC., NEEDED.

E. ACCESS CONTROL: CONNECT ALL NEW ACCESS CONTROL DEVICES TO NEW CONTROLLER. SUPPLY CONTROLLER, READERS, STRIKES, ETC.

F. CONNECT NEW CAMERAS TO NEW IDF.

G. CONNECT NEW DATA, WIFI, CAMERA DROPS TO NEW IDF. CONNECT NEW IDF TO EXISTING MDF VIA FIBER & CAT-6. SEE NETWORK SPECIFICATIONS FOR FIBER OPTIC CABLE AND CAT 6 INFORMATION.

**AGP**  
 the Abila Griffin  
 Partnership L.L.C.

313 S. E. 5th Street  
 MOORE, OK. 73160  
 405.735.3477  
 AGP@theAGP.net  
 www.theAGP.net

CEDAR CREEK  
 CIVIL

KFC ENGINEERING  
 STRUCTURAL

SALAS O'BRIEN  
 MECHANICAL / ELECTRICAL

drawn by  
 NY

checked by  
 AY  
 APRIL 2025  
 date

revisions  
 ① 06/27/2025 AD 01  
 ② 04/14/2026 CB 10

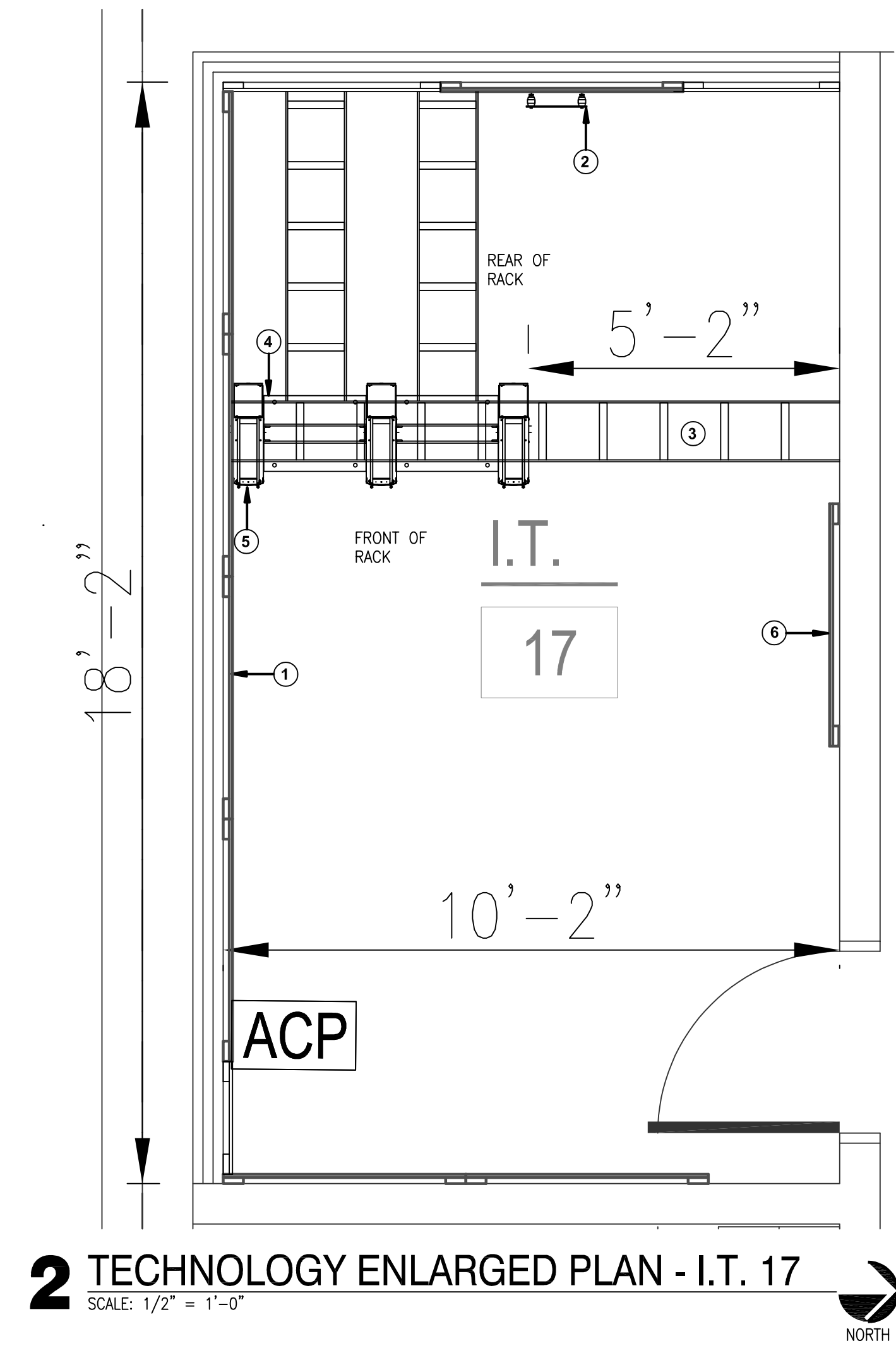
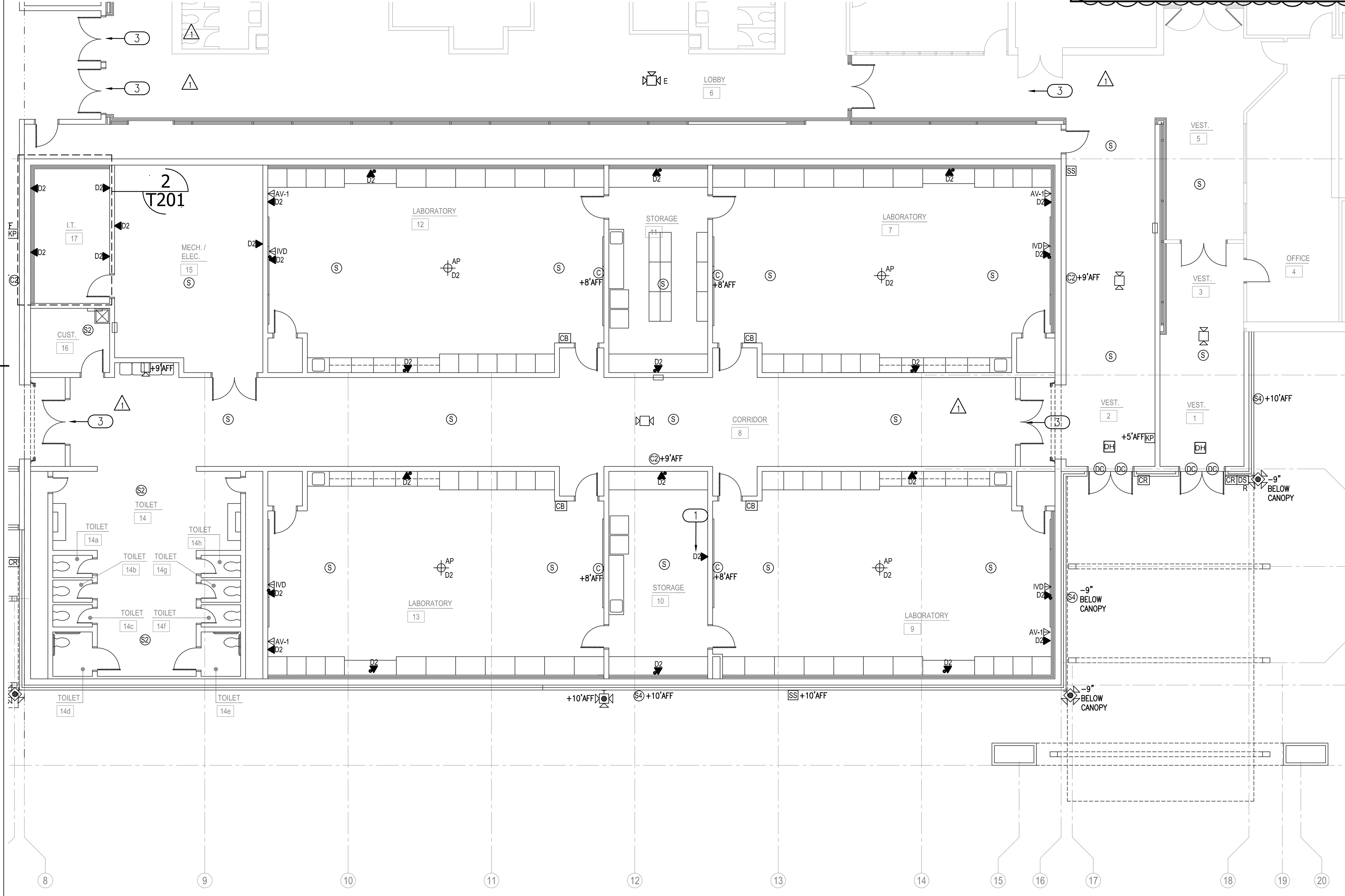
MOORE PUBLIC SCHOOLS  
 BOARD OF EDUCATION  
 MOORE, OKLAHOMA



CLASSROOM ADDITION  
 CENTRAL JUNIOR  
 HIGH SCHOOL

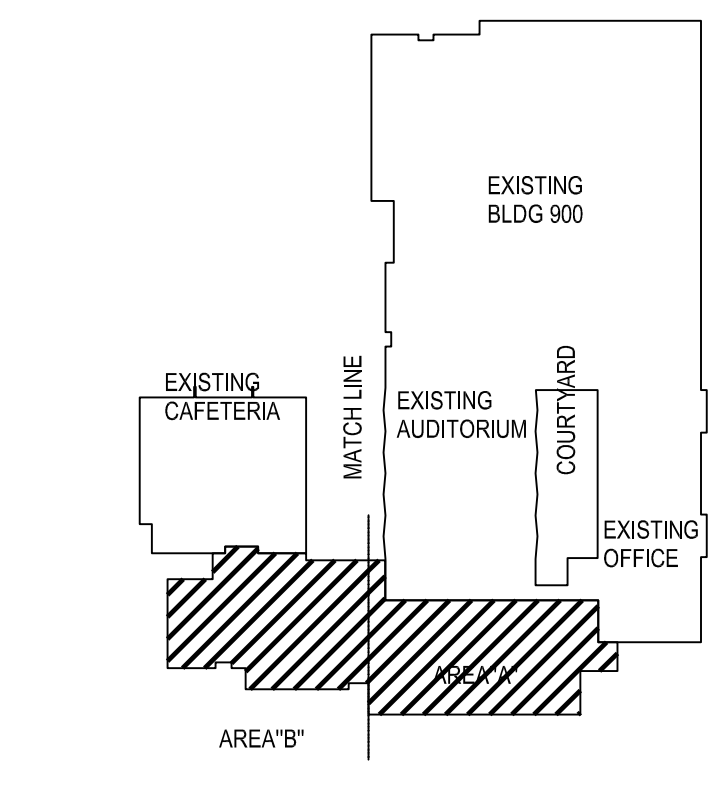
sheet no:  
**T201**

OWNERSHIP USE OF DOCUMENTS:  
 AGP EXPRESSLY RESERVES ITS COPYRIGHT AND OTHER PROPERTY RIGHTS OF ALL PLANS AND DRAWINGS DESIGNED AND/OR PRODUCED. PLANS AND DRAWINGS ARE NOT TO BE REPRODUCED IN ANY FORM OR MANNER WITHOUT THE EXPRESSED WRITTEN CONSENT OF AGP.



**2 TECHNOLOGY ENLARGED PLAN - I.T. 17**  
 SCALE: 1/2" = 1'-0"

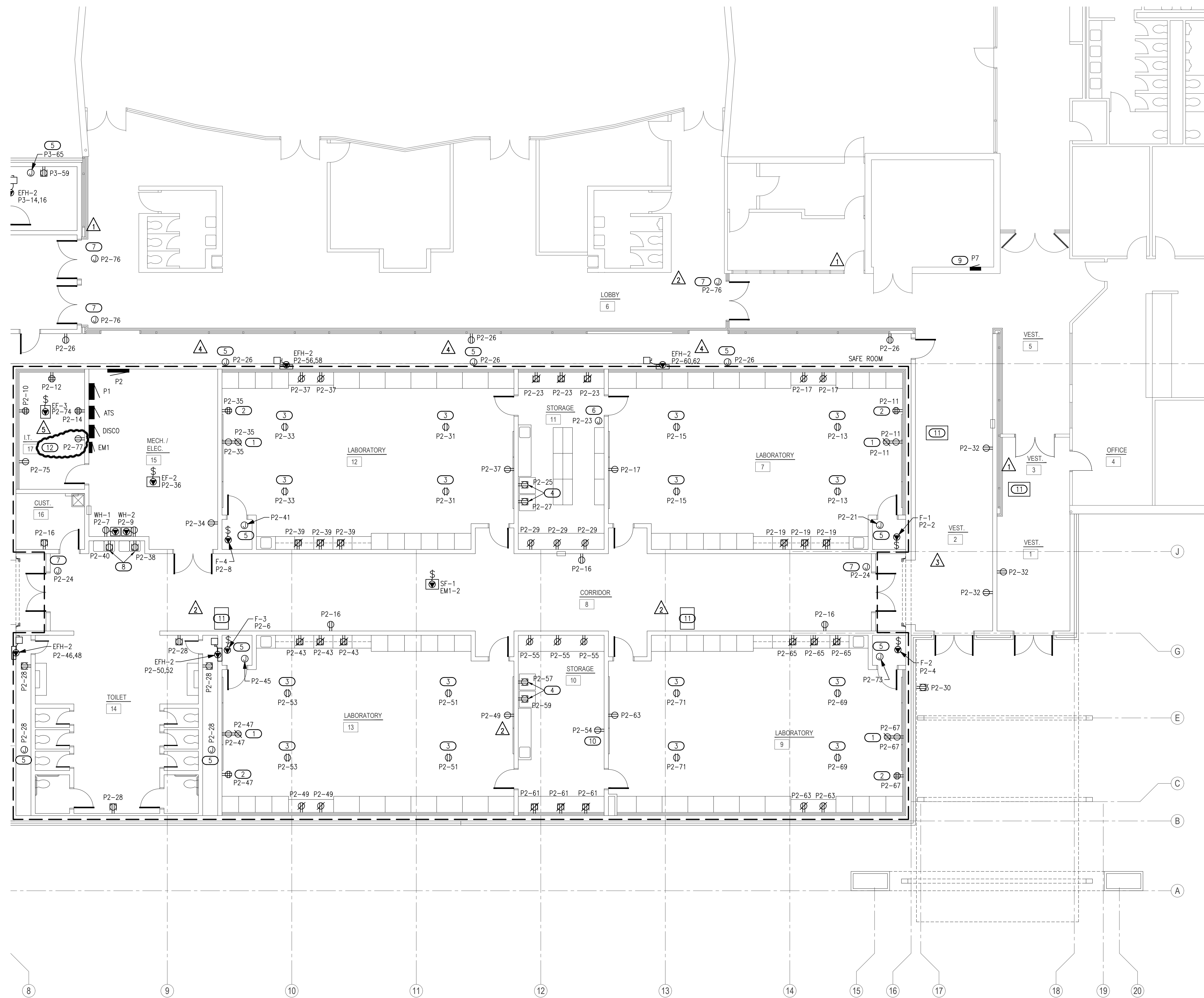
**1 TECHNOLOGY FLOOR PLAN - AREA A**  
 SCALE: 1/8" = 1'-0"



**KEYPLAN**  
 NO SCALE

**Salas O'Brien**

2900 S. Telephone Road, Suite 120  
 Moore, OK 73160  
 Salas O'Brien Registration: CA# 7058  
 Expiration Date: 6/30/2025  
 Salas O'Brien Project Number: 2550-00564-00



**POWER GENERAL NOTES**

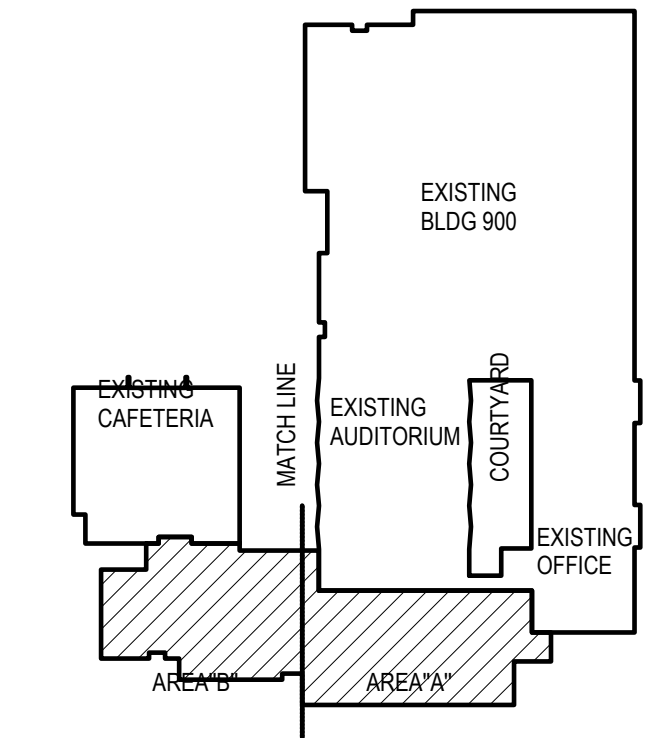
- COORDINATE EXACT LOCATIONS OF DEVICES SHOWN WITH OTHER EQUIPMENT. COORDINATE EXACT LOCATION OF CEILING MOUNTED DEVICES WITH LIGHTS, HVAC EQUIPMENT, AND OTHER DEVICES.
- COORDINATE WITH MECHANICAL CONTRACTOR AND PROVIDE ALL RELAYS, CONNECTIONS, AND ALL DEVICES NECESSARY TO INTERLOCK EXHAUST FANS, DAMPERS, ETC WITH PROPER CONTROL DEVICES.
- COORDINATE EXACT LOCATION OF MECHANICAL EQUIPMENT WITH MECHANICAL CONTRACTOR. REFER TO MECHANICAL PLANS AND MANUFACTURER FOR ADDITIONAL INFORMATION.
- COORDINATE EXACT LOCATION OF PLUMBING EQUIPMENT WITH PLUMBING CONTRACTOR. REFER TO PLUMBING PLANS AND MANUFACTURER FOR ADDITIONAL INFORMATION.
- ALL RECEPTACLES LOCATED AT COUNTERTOP HEIGHT SHALL BE ORIENTED HORIZONTALLY.
- FIRE STOP ALL PENETRATIONS IN FIRE AND SMOKE RATED WALLS. REFER TO ARCHITECTURAL PLANS FOR LOCATIONS AND ADDITIONAL INFORMATION.
- ALL EXISTING PANELS AND ASSOCIATED BRANCH CIRCUITING BELIEVED TO BE MISSING GROUNDING ELECTRODE CONDUCTOR AND/OR EQUIPMENT GROUNDING CONDUCTORS. FOR PANELS BEING REPLACED, CONTRACTOR TO INVESTIGATE EXISTING CONDITIONS AND PROVIDE NEW GROUNDING WIRES AS REQUIRED. REFER TO KEYED NOTE 9 FOR ADDITIONAL INFORMATION.

**SAFEROOM GENERAL NOTES**

PER ICC 500-2014, 309.1:  
 PENETRATIONS THROUGH THE STORM SHELTER ENVELOPE THAT ARE LARGER THAN:  
 1. 3.5" SQUARE INCHES IN AREA FOR RECTANGULAR OPENINGS, OR  
 2. 2 1/16" IN DIAMETER  
 SHALL BE CONSIDERED AN OPENING AND SHALL BE PROVIDED WITH AN OPENING PROTECTIVE DEVICE (SHROUD). REFERENCE STRUCTURAL DRAWINGS FOR A SAMPLE SHROUD DETAIL. THIS INCLUDES PENETRATIONS FOR BUNDLES OF CONDUIT.

**KEYED NOTES**

- PROVIDE 120V CONNECTION FOR SMARTBOARD. COORDINATE FINAL LOCATION AND REQUIREMENTS WITH THE OWNER/ARCHITECT PRIOR TO ROUGH-IN. REFER TO DETAIL 'E502/1' FOR ADDITIONAL INFORMATION.
- APPROXIMATE LOCATION OF TEACHERS DESK. COORDINATE FINAL LOCATION AND REQUIREMENTS WITH THE OWNER/ARCHITECT PRIOR TO ROUGH-IN. REFER TO DETAIL 'E502/1' FOR ADDITIONAL INFORMATION.
- PROVIDE 120V DROP CORD RECEPTACLE FOR GENERAL USE. COORDINATE FINAL LOCATION AND REQUIREMENTS WITH THE OWNER/ARCHITECT PRIOR TO ROUGH-IN. REFER TO DETAIL 'E502/2' FOR ADDITIONAL INFORMATION.
- PROVIDE DEDICATED 120V RECEPTACLES FOR REFRIGERATOR & FREEZER. COORDINATE FINAL LOCATIONS AND REQUIREMENTS WITH THE ARCHITECT/OWNER PRIOR TO ROUGH-IN.
- PROVIDE 120V CONNECTION FOR TRAP PRIMER. COORDINATE FINAL LOCATION AND REQUIREMENTS WITH PLUMBING CONTRACTOR PRIOR TO ROUGH-IN.
- PROVIDE EMERGENCY NATURAL GAS SHUT-OFF SWITCH INTERLOCKED WITH NATURAL GAS SOLENOID VALVE. COORDINATE EXACT LOCATION WITH PLUMBING CONTRACTOR PRIOR TO ROUGH-IN.
- PROVIDE 120V CONNECTION FOR DOOR HOLD-OPEN SYSTEM. COORDINATE EXACT LOCATION AND REQUIREMENTS WITH LOW VOLTAGE CONTRACTOR.
- PROVIDE 120V WATER COOLER CONNECTION. COORDINATE EXACT LOCATION AND REQUIREMENTS WITH THE ARCHITECT, OWNER, AND PLUMBING CONTRACTOR PRIOR TO ROUGH-IN.
- EXISTING BRANCH CIRCUITS TO BE RECONNECTED TO NEW PANEL. PROVIDE NEW WIRING AND CONDUIT AS REQUIRED TO EXTEND CIRCUITS AS NEEDED. REFER TO GENERAL NOTES ABOVE, UPDATE GROUND WIRING AS REQUIRED.
- PROVIDE 120V DEDICATED CONNECTION FOR 3D PRINTER. COORDINATE EXACT LOCATION WITH THE OWNER ON SITE.
- MINI SPLIT INDOOR UNIT TO BE POWERED FROM OUTDOOR UNIT. COORDINATE EXACT REQUIREMENTS WITH MECHANICAL CONTRACTOR ON SITE.
- REFER TO TECHNOLOGY DRAWINGS FOR INSTALLATION REQUIREMENTS OF ALL ELECTRICAL EQUIPMENT WITHIN THIS ROOM. EXACT LOCATIONS AND MOUNTING HEIGHT TO BE COORDINATED WITH OWNER AND TECHNOLOGY CONTRACTOR PRIOR TO ROUGH-IN.



**KEYPLAN**  
NO SCALE



DWG  
drawn by  
TVO  
checked by  
APRIL 2025  
date

- revisions
- 06/27/2025 AD 01
  - 08/13/2025 AD 02
  - 08/15/2025 AD 04
  - 08/19/2025 AD 08
  - 04/14/2026 CB 10

MOORE PUBLIC SCHOOLS  
BOARD OF EDUCATION  
MOORE, OKLAHOMA

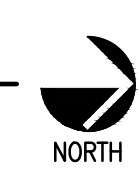


CLASSROOM ADDITION  
CENTRAL JUNIOR  
HIGH SCHOOL

sheet no:

**E201**

**1 ELECTRICAL POWER PLAN - AREA A**  
SCALE: 1/8" = 1'-0"



**Salas O'Brien**  
2900 S. Telephone Road, Suite 120  
Moore, OK 73160  
Salas O'Brien Registration: CA# 7058  
Expiration Date: 6/30/2025  
Salas O'Brien Project Number: 2550-00564-00

OWNERSHIP USE OF DOCUMENTS:  
AGP EXPRESSLY RESERVES ITS COPYRIGHT AND OTHER PROPERTY RIGHTS OF ALL PLANS AND DRAWINGS DESIGNED AND/OR PRODUCED. PLANS AND DRAWINGS ARE NOT TO BE REPRODUCED IN ANY FORM OR MANNER WITHOUT THE EXPRESSED WRITTEN CONSENT OF AGP.

313 S. E. 5th Street  
MOORE, OK. 73160  
405.735.3477  
AGP@theAGP.net  
www.theAGP.net

CEDAR CREEK  
CIVIL  
KFC ENGINEERING  
STRUCTURAL  
SALAS O'BRIEN  
MECHANICAL / ELECTRICAL



DWG  
drawn by  
TVO  
checked by  
APRIL 2025  
date

revisions  
 06/27/2025 AD 01  
 08/13/2025 AD 02  
 08/15/2025 AD 04  
 04/14/2026 CB 10

MOORE PUBLIC SCHOOLS  
BOARD OF EDUCATION  
MOORE, OKLAHOMA



CLASSROOM ADDITION  
CENTRAL JUNIOR  
HIGH SCHOOL

sheet no:

## E601

OWNERSHIP USE OF DOCUMENTS:  
AGP EXPRESSLY RESERVES ITS COPYRIGHT AND OTHER PROPERTY RIGHTS OF ALL PLANS AND DRAWINGS DESIGNED AND/OR PRODUCED. PLANS AND DRAWINGS ARE NOT TO BE REPRODUCED IN ANY FORM OR MANNER WITHOUT THE EXPRESSED WRITTEN CONSENT OF AGP.

Panel P3		ROOM MOUNTING SURFACE	VOLTS 208Y/120V 3P 4W	AIC 65,000			
FED FROM P1		NEUTRAL 100%	BUS AMPS 225	MAIN BKR 225			
NOTE [DOUBLE TUB]			LUGS STANDARD				
CKT #	CKT BKR	LOAD KVA	CIRCUIT DESCRIPTION	CKT #	CKT BKR	LOAD KVA	CIRCUIT DESCRIPTION
1	20/1	0.36	RM 24 RECEPTACLE	a 2	20/1	1.92	F-5
3	20/1	0.36	RM 24 RECEPTACLE	b 4	20/1	1.66	F-6
5	20/1	0.72	RM 24 RECEPTACLE, SMARTBOARD, TEACHER DESK	c 6	20/1	1.18	F-7
7	20/1	0.54	RM 24 RECEPTACLE	a 8	20/1	1.18	F-8
9	20/1	0.54	RM 24 RECEPTACLE	b 10	20/1	1.18	F-9
11	20/1	0.8	RM 22 FREEZER	c 12	20/1	1.18	F-10
13	20/1	0.8	RM 22 REFRIGERATOR	a 14	20/2	2	EFH-2
15	20/1	0.54	RM 22 RECEPTACLE	b 16			
17	20/1	0.54	RM 21 RECEPTACLE	c 18	20/1	0.4	LIGHTING
19	20/1	0.72	RM 21 RECEPTACLE, SMARTBOARD, TEACHER DESK	a 20	20/1	1.29	LIGHTING
21	20/1	0.54	RM 21 RECEPTACLE	b 22	20/1	1.41	LIGHTING
23	20/1	0.36	RM 21 RECEPTACLE	c 24	20/1	0.883	LIGHTING
25	20/1	0.36	RM 21 RECEPTACLE	a 26	20/2	2	EFH-2
27	20/1	0.72	RM 27 RECEPTACLE, SMARTBOARD, TEACHER DESK	b 28			
29	20/1	0.72	RM 27 RECEPTACLE	c 30	20/2	2	EFH-2
31	20/1	0.1	TRAP PRIMER	a 32			
33	20/1	0.72	RM 31 RECEPTACLE	b 34	20/2	2	EFH-2
35	20/1	0.72	RM 31 RECEPTACLE, SMARTBOARD, TEACHER DESK	c 36			
37	20/1	0.1	TRAP PRIMER	a 38	20/2	2	EFH-2
39	20/1	0.72	RM 32 RECEPTACLE	b 40			
41	20/1	0.72	RM 32 RECEPTACLE, SMARTBOARD, TEACHER DESK	c 42	20/2	2.91	AC-5
43	20/1	0.1	TRAP PRIMER	a 44			
45	20/1	0.72	RM 26 RECEPTACLE	b 46	20/2	2.91	AC-6
47	20/1	0.72	RM 26 RECEPTACLE, SMARTBOARD, TEACHER DESK	c 48			
49	20/1	0.1	TRAP PRIMER	a 50	20/2	2.91	AC-7
51	20/1	0.1	TRAP PRIMER	b 52			
53	20/1	0.54	CORRIDOR 30 RECEPTACLE, RM 29 RECEPTACLE	c 54	20/1	0	SPACE
55	20/1	0.74	CORRIDOR 25 RECEPTACLE, TRAP PRIMER	a 56	20/1	0	SPACE
57	20/1	0.54	CORRIDOR 19 RECEPTACLE, RM 18 RECEPTACLE, RM 20 RECEPTACLE	b 58	20/1	0	SPACE
59	20/1	0.18	FIRE ALARM CONTROL PANEL	c 60	20/1	0	SPACE
61	20/1	0.54	EXTERIOR RECEPTACLE	a 62	20/1	0	SPACE
63	20/1	0.18	EXTERIOR RECEPTACLE	b 64	20/1	0	SPACE
65	20/1	0.1	TRAP PRIMER	c 66	20/1	0	SPACE
67	20/1	0.01	DOOR HOLD-OPEN SYSTEM	a 68	20/1	0	SPACE
69	20/1	0	SPACE	b 70	20/1	0	SPACE
71	20/1	0	SPACE	c 72	20/1	0	SPACE
73	20/1	0	SPACE	a 74	20/1	0	SPACE
75	20/1	0	SPACE	b 76	20/1	0	SPACE
77	20/1	0	SPACE	c 78	20/1	0	SPACE
79	20/1	0	SPACE	a 80	20/1	0	SPACE
81	20/1	0	SPACE	b 82	20/1	0	SPACE
83	20/1	0	SPACE	c 84	20/1	0	SPACE

CONN KVA	CALC KVA		CONN KVA	CALC KVA	
LIGHTING	3.98	4.98 (125%)	RECEPTACLES	16.3	13.1 (50%>10)
LARGEST MOTOR	2.91	0.728 (25%)	HEATING	18.7	18.7 (100%)
MOTORS	8.28	8.28 (100%)	COOLING	8.74	0 (0%)
TOTAL LOAD			45.9		
BALANCED 3-PHASE LOAD			127 A		
PHASE A			100%		
PHASE B			107%		
PHASE C			92.9%		

Panel P2		ROOM MOUNTING SURFACE	VOLTS 208Y/120V 3P 4W	AIC 65,000			
FED FROM P1		NEUTRAL 100%	BUS AMPS 225	MAIN BKR MLO			
NOTE [DOUBLE TUB]			LUGS STANDARD				
CKT #	CKT BKR	LOAD KVA	CIRCUIT DESCRIPTION	CKT #	CKT BKR	LOAD KVA	CIRCUIT DESCRIPTION
1	20/1	1.26	ROOFTOP RECEPTACLE	a 2	20/1	1.66	F-1
3	20/1	0.54	ROOFTOP RECEPTACLE	b 4	20/1	1.92	F-2
5	20/1	0.24	EF-1	c 6	20/1	1.92	F-3
7	20/1	0.1	WH-1	a 8	20/1	1.66	F-4
9	20/1	0.1	WH-2	b 10	20/1	0.36	I.T. RECEPTACLE
11	20/1	0.72	RM 7 RECEPTACLE, SMARTBOARD, TEACHER DESK	c 12	20/1	0.36	I.T. RECEPTACLE
13	20/1	0.36	RM 7 RECEPTACLE	a 14	20/1	0.36	I.T. RECEPTACLE
15	20/1	0.36	RM 7 RECEPTACLE	b 16	20/1	0.72	CORRIDOR 8 RECEPTACLE, RM 16 RECEPTACLE
17	20/1	0.54	RM 7 RECEPTACLE	c 18	20/1	1.21	LIGHTING
19	20/1	0.54	RM 7 RECEPTACLE	a 20	20/1	1.25	LIGHTING
21	20/1	0.1	TRAP PRIMER	b 22	20/1	0.21	LIGHTING
23	20/1	0.59	GAS SOLENOID VALVE, RM 11 RECEPTACLE	c 24	20/1	0.02	DOOR HOLD-OPEN SYSTEM
25	20/1	0.8	RM 11 FREEZER	a 26	20/1	0.84	CHASE RECEPTACLE, TRAP PRIMER
27	20/1	0.8	RM 11 REFRIGERATOR	b 28	20/1	0.92	PLUMBING CHASE RECEPTACLE, RM 14 RECEPTACLE, TRAP PRIMER
29	20/1	0.54	RM 11 RECEPTACLE	c 30	20/1	0.18	EXTERIOR RECEPTACLE
31	20/1	0.36	RM 12 RECEPTACLE	a 32	20/1	0.54	RECEPTACLE, RM 1 RECEPTACLE, RM 2 RECEPTACLE
33	20/1	0.36	RM 12 RECEPTACLE	b 34	20/1	0.18	RM 15 RECEPTACLE
35	20/1	0.72	RM 12 RECEPTACLE, SMARTBOARD, TEACHER DESK	c 36	20/1	0.24	EF-2
37	20/1	0.54	RM 12 RECEPTACLE	a 38	20/1	0.5	WATER COOLER
39	20/1	0.54	RM 12 RECEPTACLE	b 40	20/1	0.5	WATER COOLER
41	20/1	0.1	TRAP PRIMER	c 42	20/1	0	SPACE
43	20/1	0.54	RM 13 RECEPTACLE	a 44	20/1	0	SPACE
45	20/1	0.1	TRAP PRIMER	b 46	20/2	2	EFH-2
47	20/1	0.72	RM 13 RECEPTACLE, SMARTBOARD, TEACHER DESK	c 48			
49	20/1	0.54	RM 13 RECEPTACLE	a 50	20/2	2	EFH-2
51	20/1	0.36	RM 13 RECEPTACLE	b 52			
53	20/1	0.36	RM 13 RECEPTACLE	c 54	20/1	1.2	3D PRINTER
55	20/1	0.54	RM 10 RECEPTACLE	a 56	20/2	2	EFH-2
57	20/1	0.8	RM 10 FREEZER	b 58			
59	20/1	0.8	RM 10 REFRIGERATOR	c 60	20/2	2	EFH-2
61	20/1	0.54	RM 10 RECEPTACLE	a 62			
63	20/1	0.54	RM 9 RECEPTACLE	b 64	20/2	0.798	LIGHTING
65	20/1	0.54	RM 9 RECEPTACLE	c 66			
67	20/1	0.72	RM 9 RECEPTACLE, SMARTBOARD, TEACHER DESK	a 68	20/2	0.665	LIGHTING
69	20/1	0.36	RM 9 RECEPTACLE	b 70			
71	20/1	0.36	RM 9 RECEPTACLE	c 72	20/1	0.3	LIGHTING
73	20/1	0.1	TRAP PRIMER	a 74	20/1	0.168	EF-3
75	20/1	0.18	ACP	b 76	20/1	0.03	DOOR HOLD-OPEN SYSTEM
77	20/1	0.322	DAS	c 78	20/1	0.322	LIGHTING
79	20/1	0	SPACE	a 80	20/1	0.881	LIGHTING
81	20/1	0	SPACE	b 82	20/1	0	SPACE
83	20/1	0	SPACE	c 84	20/1	0	SPACE

CONN KVA	CALC KVA		CONN KVA	CALC KVA	
LIGHTING	5.63	7.04 (125%)	MOTORS	8	8 (100%)
LARGEST MOTOR	1.92	0.48 (25%)	RECEPTACLES	24.9	17.5 (50%>10)
TOTAL LOAD			41		
BALANCED 3-PHASE LOAD			114 A		
PHASE A			117%		
PHASE B			88.4%		
PHASE C			94.7%		

Panel P1		ROOM MOUNTING SURFACE	VOLTS 208Y/120V 3P 4W	AIC 65,000			
FED FROM UTILITY		NEUTRAL 100%	BUS AMPS 600	MAIN BKR 600			
NOTE			LUGS STANDARD				
CKT #	CKT BKR	LOAD KVA	CIRCUIT DESCRIPTION	CKT #	CKT BKR	LOAD KVA	CIRCUIT DESCRIPTION
1	45/2	5.82	CU-1	a 2	225/3	46.5	PANEL P2
3				b 4			
5	50/2	6.66	CU-2	c 6			
7				a 8	225/3	47.3	PANEL P3
9	50/2	6.66	CU-3	b 10			
11				c 12			
13	45/2	5.82	CU-4	a 14	30/2	4.5	EWB-1
15				b 16			
17	50/2	6.66	CU-5	c 18	20/2	2.91	AC-8
19				a 20			
21	45/2	5.82	CU-6	b 22	20/2	2.91	AC-9
23				c 24			
25	30/2	3.95	CU-7	a 26	20/2	2.91	AC-1
27				b 28			
29	30/2	3.95	CU-8	c 30	20/2	2.91	AC-2
31				a 32			
33	30/2	3.95	CU-9	b 34	20/2	2.91	AC-3
35				c 36			
37	30/2	3.95	CU-10	a 38	20/2	2.91	AC-4
39				b 40			
41	20/1	0	SPACE	c 42	20/1	0	SPACE
43	20/1	0	SPACE	a 44	20/1	0	SPACE
45	20/1	0	SPACE	b 46	20/1	0	SPACE
47	20/1	0	SPACE	c 48	20/1	0	SPACE
49	20/1	0	SPACE	a 50	20/1	0	SPACE
51	20/1	0	SPACE	b 52	20/1	0	SPACE
53	20/1	0	SPACE	c 54	20/1	0	SPACE

CONN KVA	CALC KVA		CONN KVA	CALC KVA	
LIGHTING	9.62	12 (125%)	RECEPTACLES	41.2	25.6 (50%>10)
LARGEST MOTOR	6.66	1.66 (25%)	HEATING	97.5	97.5 (100%)
MOTORS	20.8	20.8 (100%)	COOLING	79.5	0 (0%)
TOTAL LOAD			158		
BALANCED 3-PHASE LOAD			437 A		
PHASE A			107%		
PHASE B			101%		
PHASE C			92.2%		

Panel EM1		ROOM MOUNTING SURFACE	VOLTS 208Y/120V 3P 4W	AIC 65,000			
FED FROM UTILITY		NEUTRAL 100%	BUS AMPS 125	MAIN BKR 125			
NOTE			LUGS STANDARD				
CKT #	CKT BKR	LOAD KVA	CIRCUIT DESCRIPTION	CKT #	CKT BKR	LOAD KVA	CIRCUIT DESCRIPTION
1	20/1	0.18	RECEPTACLE	a 2	20/1	1.06	SF-1
3	20/1	0.5	BLOCK HEATER	b 4	20/1	0.1	LP GAS SENSOR PANEL
5	20/1	0.5	BATTERY HEATER	c 6	20/1	0.05	LP GAS SOLENOID VALVE
7	20/1	0.5	BATTERY CHARGER	a 8	20/1	0	SPACE
9	20/1	0.266	LIGHTING	b 10	20/1	0	SPACE
11	20/1	1.23	LIGHTING	c 12	20/1	0	SPACE
13	20/1	1.09	LIGHTING	a 14	20/1	0	SPACE
15	20/1	0.851	LIGHTING	b 16	20/1	0	SPACE
17	20/1	0	SPACE	c 18	20/1	0	SPACE
19	20/1	0	SPACE	a 20	20/1	0	SPACE
21	20/1	0	SPACE	b 22	20/1	0	SPACE
23	20/1	0	SPACE	c 24	20/1	0	SPACE
25	20/1	0	SPACE	a 26	20/1	0	SPACE
27	20/1	0	SPACE	b 28	20/1	0	SPACE
29	20/1	0	SPACE	c 30	20/1	0	SPACE
31	20/1	0	SPACE	a 32	20/1	0	SPACE
33	20/1	0	SPACE	b 34	20/1	0	SPACE
35	20/1	0	SPACE	c 36	20/1	0	SPACE
37	20/1	0	SPACE	a 38	20/1	0	SPACE
39	20/1	0	SPACE	b 40	20/1	0	SPACE
41	20/1	0	SPACE	c 42	20/1	0	SPACE

CONN KVA	CALC KVA		CONN KVA	CALC KVA
----------	----------	--	----------	----------