

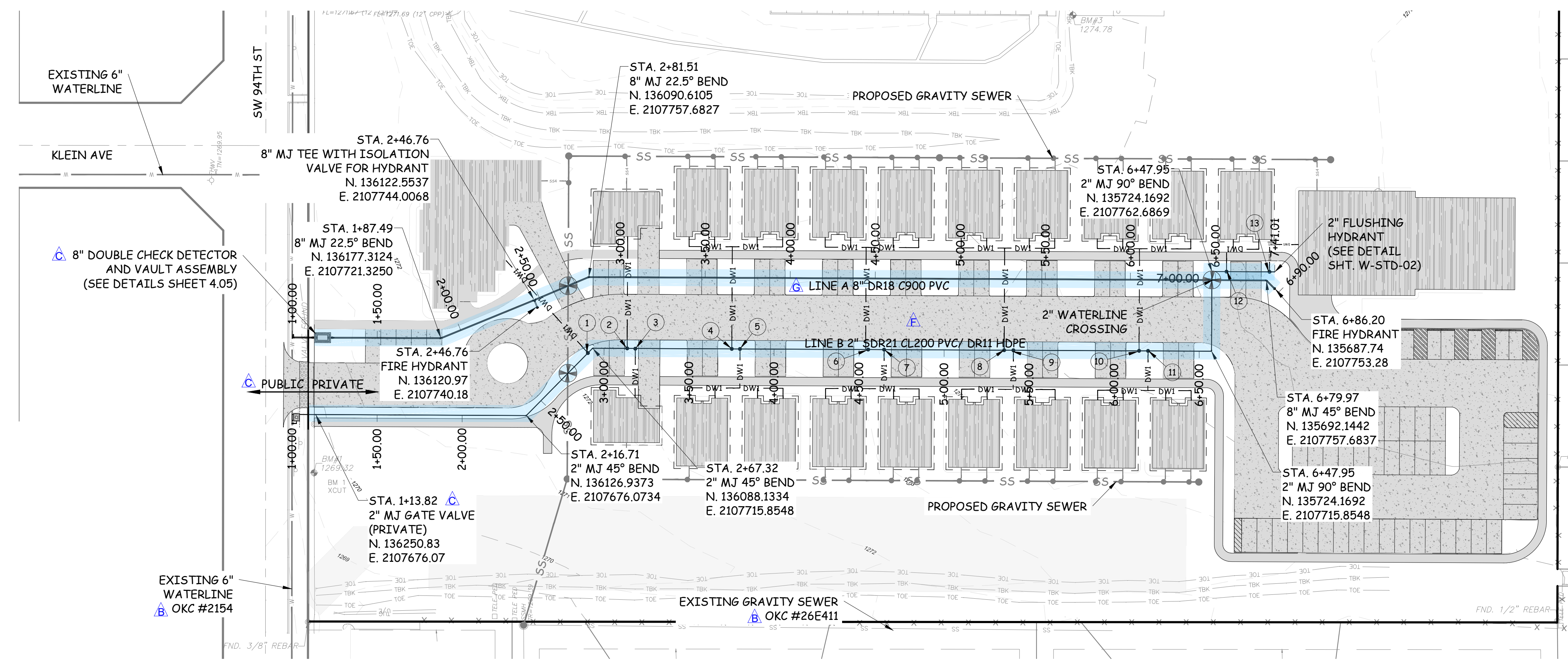


P. O. Box 892245 • OKC, OK 73189
OFFICE: 405-735-3992 • CELL: 405-570-7881

Addendum #1 (ADD1)
Bridges of Moore
Housing Development
02/18/2025

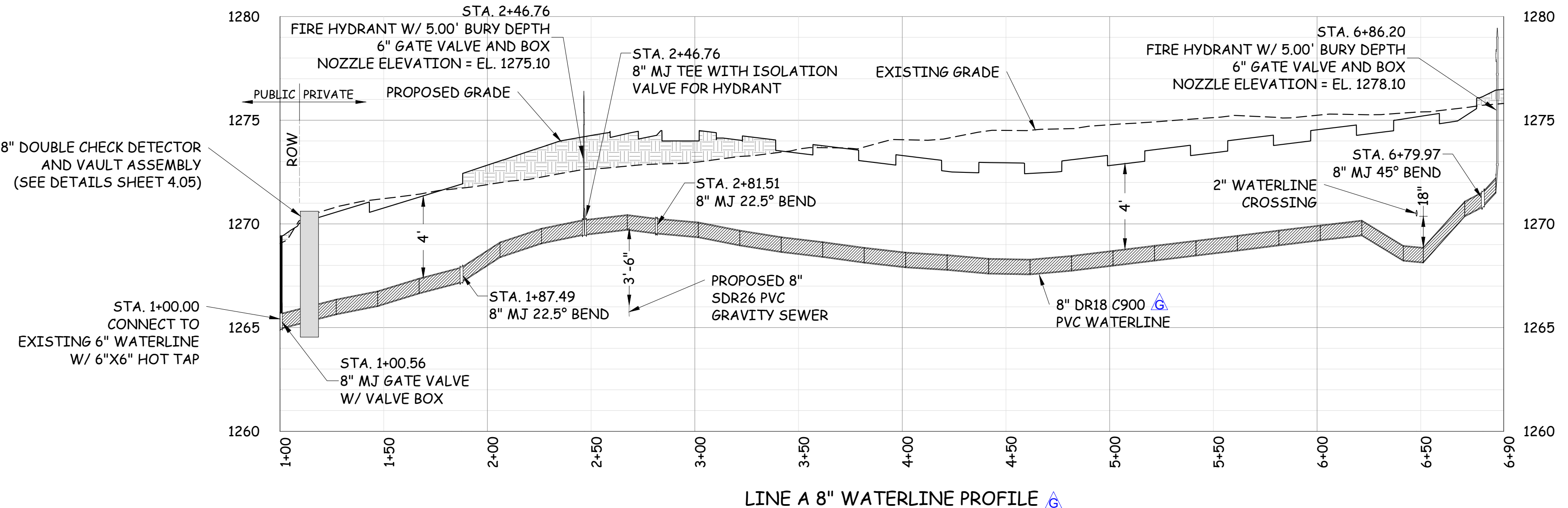
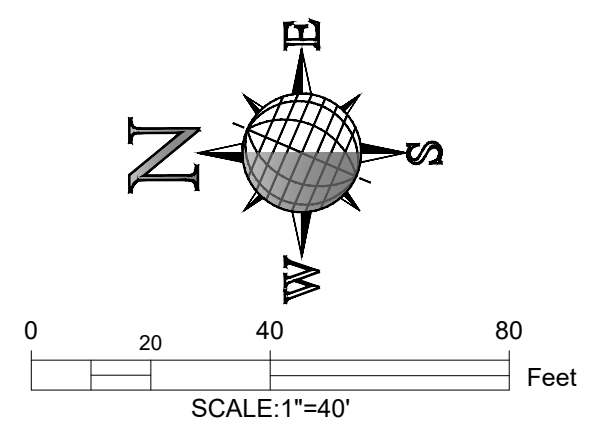
- 1.) Revised plan sheet 4.03 to correct water line A size from 6" to 8". See attached.

Plot Date: 2/17/2025 10:51 AM Location: G:\Shared\Drawings\2025\125\UTILITY NETWORKS.dwg Page Size: ARCH (11.00 x 24.00 Inches) By: Admin



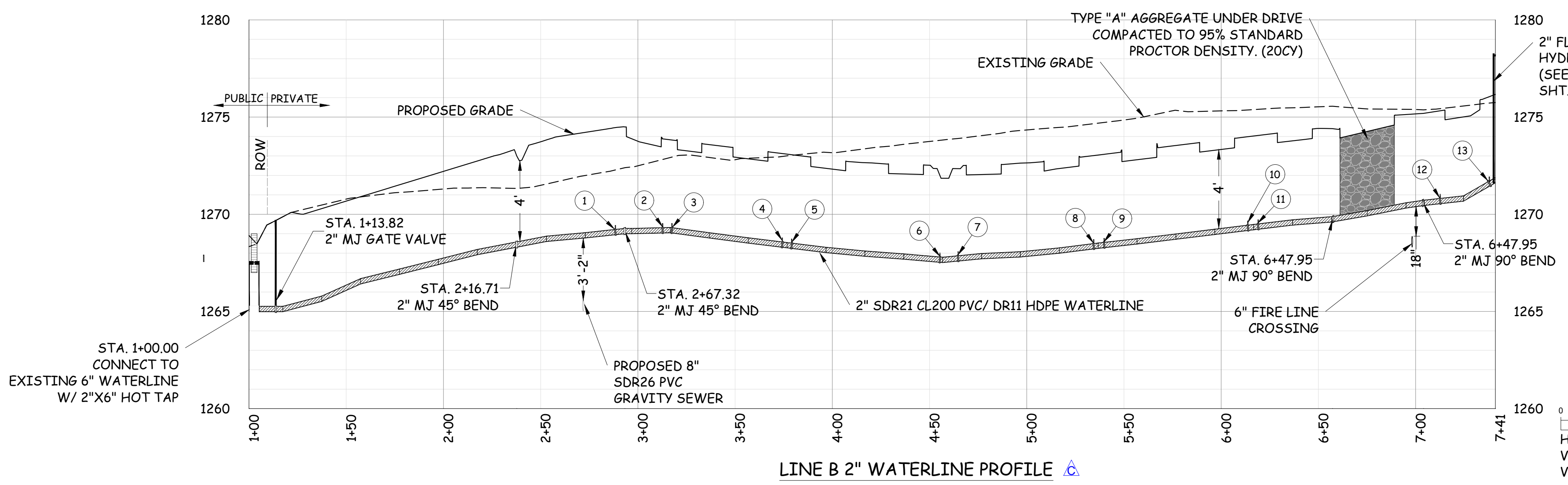
1" WATER SERVICE TAP LOCATIONS ON 2" WATERLINE	
1" FAR SIDE SERVICE STA.	1" NEAR SIDE SERVICE STA.
1) 2+88.43	3) 3+17.53
2) 3+12.73	5) 3+79.11
4) 3+74.26	7) 4+64.71
6) 4+55.34	9) 5+39.83
8) 5+34.43	11) 6+19.03
10) 6+13.75	12) 7+12.66
	13) 7+37.94

NOTE:
 ALL WATER SERVICES TO BE 1" C909 HDPE WITH 2"x1" TAPPING SADDLE AND CORPORATION STOP. SEE OKC STANDARD DETAIL W-22 FOR TAP AND CORPORATION STOP INSTALLATION.



NOTE:
 1) FIRE HYDRANT BURY DEPTH NOTED BETWEEN FINAL GRADE OF FIRE HYDRANT AND FLOW LINE OF WATER MAIN.
 2) WATER METERS, GATE VALVES, AND FIRE HYDRANTS MUST SIT OUTSIDE OF PAVING FOR SIDEWALKS AND DRIVEWAYS

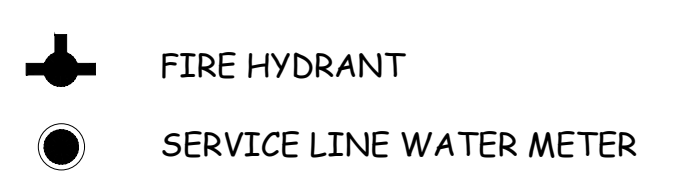
HORIZONTAL SCALE: 1"= 40'
 VERTICAL SCALE: 1"= 4'
 VERTICAL EXAGGERATION: 10X



HORIZONTAL SCALE: 1"= 40'
 VERTICAL SCALE: 1"= 4'
 VERTICAL EXAGGERATION: 10X

LEGEND
(WITH LINE SIZES WHERE APPLICABLE)

---	LOT LINE
---	PROPERTY LINE
---	RIGHT-OF-WAY/ PROPERTY LINE
---	RIGHT OF WAY
---	EASEMENT (GENERAL)
---	PERMANENT UTILITY EASEMENT
---	TEMPORARY CONSTRUCTION ESMT
---	BUILDING SETBACK LINE
---	WOOD FENCE
---	DOMESTIC WATERLINE
---	UNDERGROUND ELECTRICAL
---	GAS LINE
---	OVERHEAD ELECTRICAL
---	STORM WATER FLOW DIRECTION
---	CORRUGATED METAL CULVERT
---	CONCRETE FLUME
---	UTILITY REMOVE
---	TOP OF BANK
---	TOE OF BANK



WATERLINE P&P	
BRIDGES OF MOORE	
BRIDGES	
Moore, Cleveland Co., Oklahoma	
SHEET NAME	WATERLINE P&P
PROJECT	BRIDGES OF MOORE
CLIENT	BRIDGES
LOCATION	Moore, Cleveland Co., Oklahoma
P.O. Box 722516 Norman, OK 73070 TEL. (405)364-0900 Oklahoma C.A. No. 106 Renewal 6-30-25	
SEARCH LLC SYSTEMS ENGINEERING & RESEARCH ENGINEERING EXCELLENCE SINCE 1970 ENVIRONMENTAL • CIVIL • MUNICIPAL • INDUSTRIAL	
DESIGNED BY	P. Streebin
DRAWN BY	L. Brewer
APPROVED BY	P. Streebin
DATE	04/01/2024
REV.	DATE
1	06/29/2024
2	08/24/2024
3	12/11/2024
4	02/17/2025
DESCRIPTION	
1	Clarifications per OKC CP#2 review
2	Clarifications per OKC CP#2 review & meeting 6/14/24
3	Water and Sewer service clarifications
4	Water and Sewer service clarifications
SHEET 4.03	
Drawing for Review only unless Signature and Date are Originals	